

**Volvo Car USA LLC**
**Technical Journal**

Technical Journal Title <b>Creaking/ticking noise from Steering Wheel Module</b>		Ref. No. <b>TJ 36805.1.0</b>	
Issuer (Dept.) <b>Technical Service</b>		Issue Date <b>2/9/24</b>	Status Date <b>3/7/24</b>
Car Market <b>United States and Canada</b>	Partner <b>3 US 7510 Volvo Car USA</b>	Function Group <b>3644</b>	
Function Description <b>Housing for direction indicator switch</b>		Page <b>Page 1 of 6</b>	

**Attachment**

File Name	File Size
TJ36805_1.jpg	0.1324 MB
TJI-528590-1_1_3_en-US.pdf	0.2650 MB

**DESCRIPTION:**

If a customer complains of a creaking / ticking noise from steering wheel module (SWM) area when turning the steering wheel, then follow advice under Service.

**CSC** Customer Symptom Codes

Code	Description
H3	Steering wheel/Squeak/rattle/Steering column/wheel
H4	Steering/Unusual noise/Unsure when/at all times
X8	Steering/Unusual noise/At full turn

**DTC** Diagnostic Trouble Codes

**Vehicle Type**

Type	Eng	Eng Desc	Sales	Body	Gear	Steer	Model Year	Plant	Chassis range	Struc Week Range
536							2023-2024		-	202222-202346
539							2023-2024		-	202222-202346

**SERVICE:**

Follow instruction for XC40, C40 according to the attachment TJI-528590-1\_1\_3.

**Use tape Part No:** 30643492 (50\*25\*0,6)(mm)

**Warranty claim info:**

To get a warranty claim accepted for a job described in this TJ, use the corresponding VST OP number stated in this TJ.

Note that the TJ number must be stated in the repair order text.

## Technical Journal 36805.1.0

---

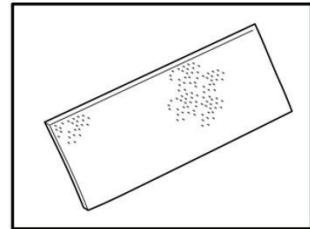
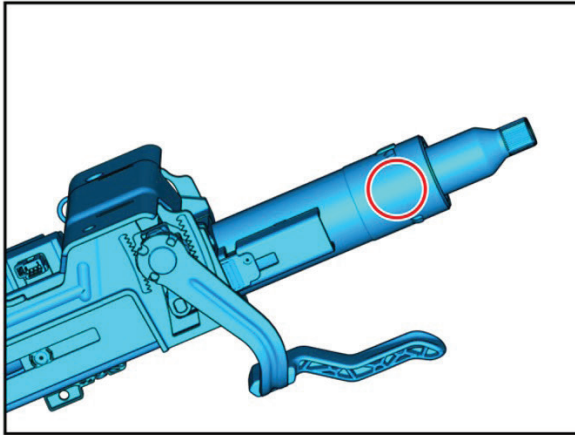
### VST Operation Number

VST Operation Number	Description
98585-2	Steering column adjust acc. to TJ

### VEHICLE REPORT:

Yes, please submit a Vehicle Report if the service solution described in this TJ has no effect. Use concern area "Vehicle Report" and sub concern area "Support not needed", use function group 3644.

**To view TJ attachments continue to next page. This has two attachments.**



TJ36805



# Volvo Car Customer Service

TJ Instruction VCC-528590-1

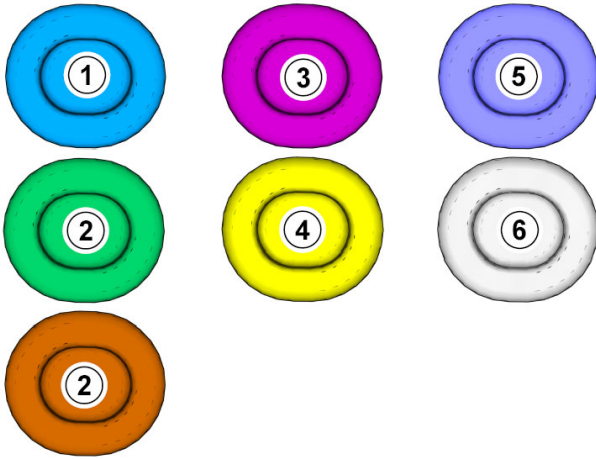
<b>Title</b>	Steering column	<b>Page</b>	1 ( 3 )
<b>Action</b>	Adjustment	<b>Operation number:</b>	98585-2

<b>Issue</b>	<b>Date</b>	<b>Reason</b>
1	2024-01	First issue

## Affected vehicles

<b>Model year</b>	<b>Model</b>	<b>Engine</b>
2023, 2024	C40	E400V12, V16, V2, V6, V8
2023, 2024	XC40	E400V12, V16, V2, V6, V8

### Color symbols



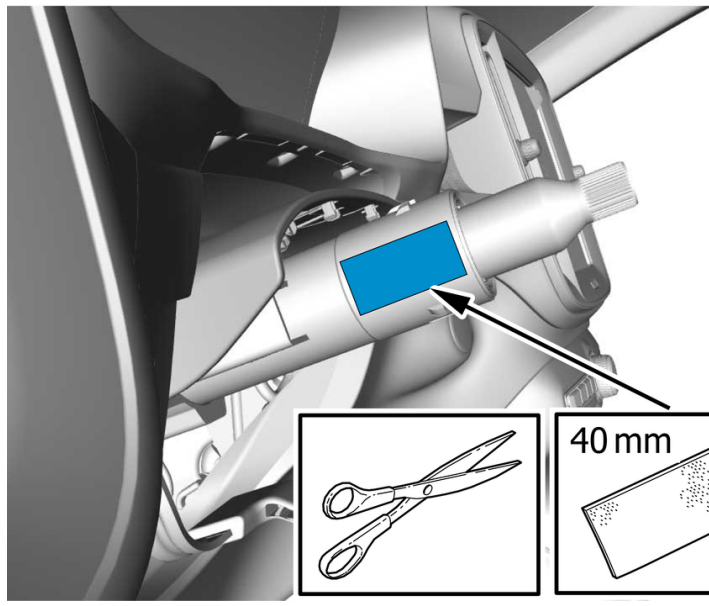
**Note! This colour chart displays (in colour print and electronic version) the importance of the different colours used in the images of the method steps.**

- 1 . Used for focused component, the component with which you will do something.
- 2 . Used as extra colors when you need to show or differentiate additional parts.
- 3 . Used for attachments that are to be removed/installed. May be screws, clips, connectors, etc.
- 4 . Used when the component is not fully removed from the vehicle but only hung to the side.
- 5 . Used for standard tools and special tools.
- 6 . Used as background color for vehicle components.

### Removal

Remove steering wheel module (SWM) , refer to:

- Removal, replacement and installation
- 6 - Suspension and steering
- 64 - Steering
- 641 - steering wheel, column lock, steering column, shaft



Use tape  
Adjust to the specified value.

**Installation**

To install, reverse the removal procedure.