

**Subject:** Engineering Information - Check Engine Lamp Illuminated on Driver Information Center (DIC), DTC P0496 Set

**Attention:** Proceed with this EI ONLY if the customer has commented about this concern AND the PIE number is listed in the Global Warranty Management / Investigate History link (GWM/IVH). If the customer has not commented about this condition or the EI does not show in GWM/IVH, disregard the PIE, and proceed with diagnostics found in published service information. THIS IS NOT A RECALL refer to Service Bulletin 04-00-89-053 for more details on the use of Engineering Information bulletins.

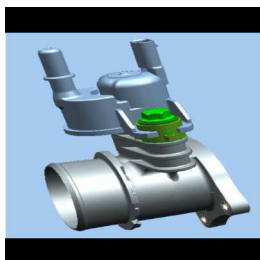
*This EI has been revised to add 2024 XT5, XT6, and Blazer. Please discard PIE0783.*

Brand:	Model:	Model Year:		VIN Breakpoint:		Engine:	Transmission:
		from	to	from	to		
Cadillac	XT4	2024	2024	—	—	Equipped with 2.0L (RPO LSY)	—
	XT5						
	XT6						
Chevrolet	Blazer						

<b>Involved Region or Country</b>	<b>U.S. Dealers ONLY</b>
<b>Condition</b>	Some customers may comment on the Check Engine Lamp illuminated on Driver Information Center (DIC). Technicians may find DTC P0496 set.
<b>Cause</b>	GM Engineering is attempting to determine the root cause of the above condition. Engineering has a need to gather information on vehicles PRIOR to repair that may exhibit this condition. As a result, this information will be used to "root cause" the customer's concern and develop/validate a field fix.

**Correction**

**Important:** Service agents must comply with all International, Federal, State, Provincial, and/or Local laws applicable to the activities it performs under this bulletin, including but not limited to handling, deploying, preparing, classifying, packaging, marking, labeling, and shipping dangerous goods. In the event of a conflict between the procedures set forth in this bulletin and the laws that apply to your dealership, you must follow those applicable laws.



If you encounter a vehicle with the above concern, remove the turbo adapter and the purge valve with both still attached together, as shown in the picture above and ship parts back via part return process then contact the engineer listed below.

**Contact Information**

The Contact Information has been redacted.

Please include the following information if leaving a message:

- Technician name
- Dealer name and phone number
- Complete VIN and repair order (R.O) number

On the repair order, document the date and time the call was placed (even if the engineer was not reached).

If engineering is unable to return the call within one hour, proceed with diagnosis and repair based on information found in SI.

## Warranty Information

If an engineer was contacted or required information was provided, use:

Labor Operation	Description	Labor Time
4086528*	Engineering Information - Check Engine Lamp Illuminated on (DIC), DTC P0496 Set	0.6 Hrs.

\*This is a unique Labor Operation for bulletin use only.

<b>Version</b>	2
<b>Modified</b>	Released March 08, 2024 Revised March 27, 2024 - Added 2024 XT5, XT6 and Blazer.