



Technical Service Bulletin

SUBJECT: FRONT BUMPER HEADLIGHT BRACKET INSTALLATION PROCEDURE CHANGE – SERVICE MANUAL REVISION			No: TSB-24-51-001
			DATE: March 2024
			MODEL: Eclipse Cross
CIRCULATE TO:	<input type="checkbox"/> GENERAL MANAGER	<input checked="" type="checkbox"/> PARTS MANAGER	<input checked="" type="checkbox"/> TECHNICIAN
<input checked="" type="checkbox"/> SERVICE ADVISOR	<input checked="" type="checkbox"/> SERVICE MANAGER	<input checked="" type="checkbox"/> WARRANTY PROCESSOR	<input type="checkbox"/> SALES MANAGER

PURPOSE

This TSB provides installation procedure changes for the Front Bumper Headlight Bracket in the applicable Service Manual sections.

AFFECTED VEHICLES

2022-2024 Eclipse Cross

AFFECTED SERVICE MANUAL

2022-2024 Eclipse Cross Service Manual

PROCEDURE

Please use the chart below to replace the pages with new procedures in the affected 2022-2024 Eclipse Cross, Exterior, Front Bumper Assembly sections:

Applicable Manual	Pub. No.	Applicable Title	Contents
2022 ECLIPSE CROSS Service Manual	MSCD-020B-2022	EXTERIOR └FRONT BUMPER ASSEMBLY └SEALANT(S) OR ADHESIVE(S)	Attached sheet 1
2023 ECLIPSE CROSS Service Manual	MSCD-020B-2023	EXTERIOR └FRONT BUMPER ASSEMBLY	Attached sheet 2
2024 ECLIPSE CROSS Service Manual	MSCD-020B-2024	└FRONT BUMPER ASSEMBLY DISASSEMBLY AND REASSEMBLY	(2 OF 2)



Copyright 2024, Mitsubishi Motors North America, Inc.

The information contained in this bulletin is subject to change. For the latest version of this document, go to the Mitsubishi Dealer Link, MEDIC, or the Mitsubishi Service Information website (www.mitsubishitechinfo.com).

EXTERIOR
FRONT BUMPER ASSEMBLY

FRONT BUMPER ASSEMBLY

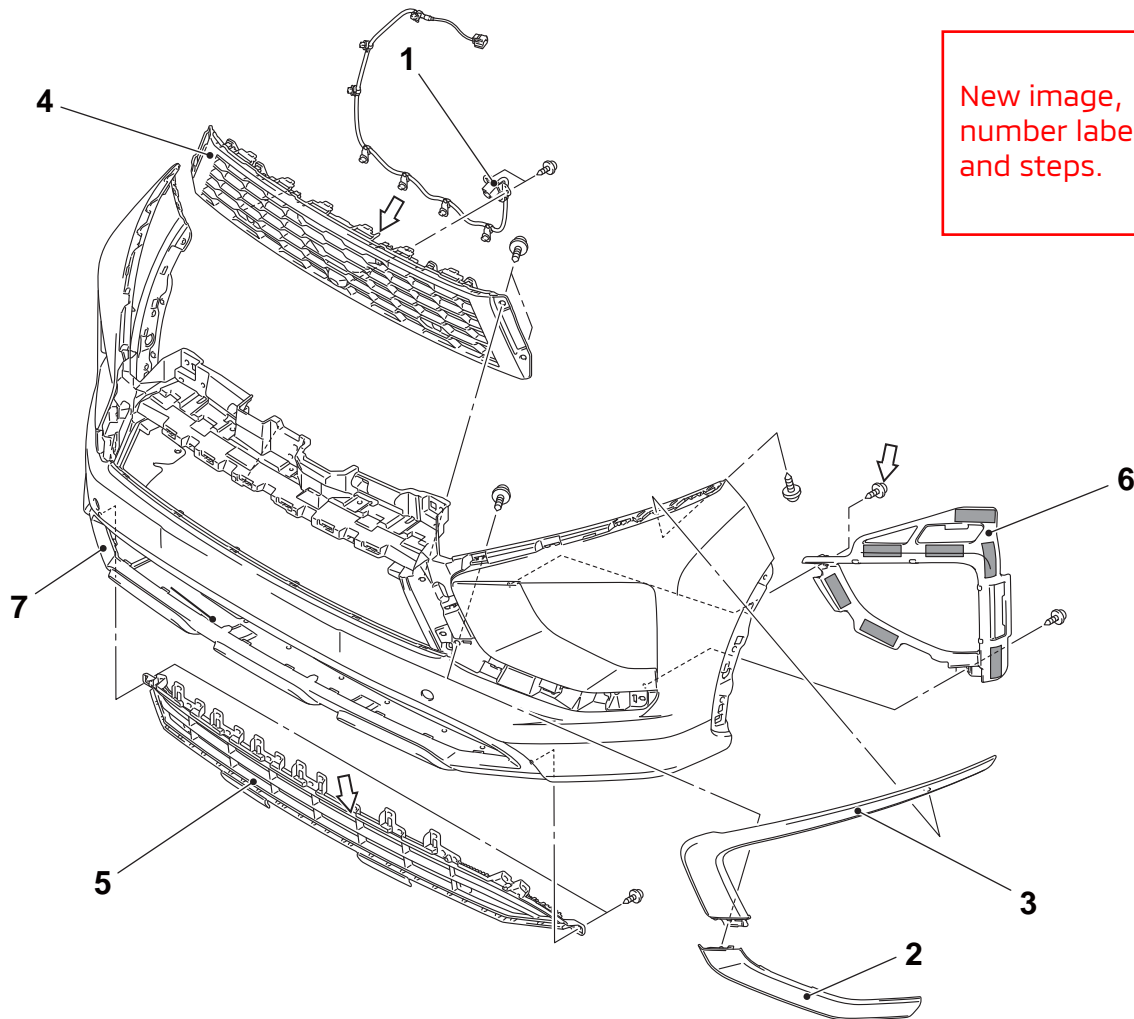
ADHESIVE

M15120005A0007

Application	Specified adhesive
Front bumper headlight bracket <From 22 Model year> <Changed>	Double-sided tape: 3M™ GT7112 or equivalent [25 mm (1.0 in) width and 1.2 mm (0.05 in) thickness] Specified primer: 3M™ K-520 or equivalent

EXTERIOR FRONT BUMPER ASSEMBLY

<From 22 Model year>



New image,
number labeling
and steps.

← : When installing, fix the portion shown in the figure first.

BCKA2175AH

Disassembly steps

1. Front view camera <Vehicles with multi around monitor>
2. Front bumper side lower garnish
3. Front bumper side upper garnish

<Added> >>A<<

Disassembly steps

4. Front bumper cover
5. Front under grille
6. Front bumper headlight bracket
7. Front bumper face

EXTERIOR
FRONT BUMPER ASSEMBLY

<Added>

**REASSEMBLY SERVICE POINTS <FROM 22
MODEL YEAR>**

**>>A<< FRONT BUMPER HEADLIGHT BRACKET
INSTALLATION <IN CASE OF NEW
REPLACEMENT>**

1. Degrease the application surfaces for double-sided tapes on the front bumper face by using a cloth moistened with MITSUBISHI MOTORS GENUINE Parts cleaner (MZ100387) or equivalent.
2. Apply the primer to the application surfaces for double-sided tapes (inside the scribed line) on the front bumper face.

Specified primer: 3M™ K-520 or equivalent

3. Attach the front bumper headlight bracket to the front bumper face.

**>>A<< FRONT BUMPER HEADLIGHT BRACKET
INSTALLATION <IN CASE OF REUSING>**

1. Peel off the double-sided tapes on the front bumper headlight bracket.
2. Degrease the application surfaces for double-sided tapes by using a cloth moistened with MITSUBISHI MOTORS GENUINE Parts cleaner (MZ100387) or equivalent.
3. Apply the primer to the application surfaces for double-sided tapes (inside the scribed line) on the front bumper headlight bracket.

Specified primer: 3M™ K-520 or equivalent

4. Apply the double-sided tapes (inside the scribed line) on the front bumper headlight bracket.

**Double-sided tape: 3M™ GT7112 or equivalent (25
mm (1.0 in) width and 1.2 mm (0.05 in) thickness)**

5. Apply the primer to the application surfaces for double-sided tapes (inside the scribed line) on the front bumper face.

Specified primer: 3M™ K-520 or equivalent

6. Attach the front bumper headlight bracket to the front bumper face.