



SERVICE BULLETIN

Subject: New Kibes RT Updated Software and Implementing Freewheeling Diodes for Mux-5B Bulletin

Bulletin Type: Field Fix Mandatory

Bulletin No: TS35-FM-2401

PQR No: 500000007500

Rev No: 00

Ref. No: 700004478

Vehicle Model: TS35

Flat Rate Time / Code:120 min

Date of issue: 01.03.2024

Modify Before: 01.03.2025

What to do with off coming parts:

- Scrap
- Return
- Use with additional parts
- On consignment
- No off coming parts

What to do with outstanding parts of previous revision:

- Scrap
- Return
- Use with additional parts
- On consignment
- No outstanding parts

Description of the modification:

This bulletin includes the updated RT Kibes ZR5-A software. It will improve Multiplexing units' performance. Also, additional improvements were added to new Multiviu software. Freewheeling diodes will be implemented to the "Mux 1.1" and "Mux 2.1".

Bulletin Responsible:

Bahadır Kaya (Software R&D)
Utku Devecioğlu (Hardware R&D)

Published & Approved By: Alper Tekniker

SAFETY INSTRUCTIONS

1. Mechanical Requested Dress Code

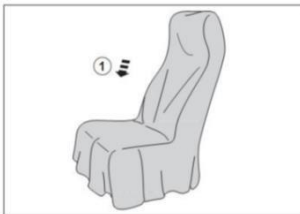


WARNING:

- Dress properly to avoid personal injury and damage to the vehicle

- ✓ Always wear protective clothing
- ✓ Do not wear any worn or loose-fitting clothing
- ✓ Remove jewelry before starting to work
- ✓ In case of long hair, use hairnet
- ✓ The illustration on the left shows some of the correct and incorrect clothing
- ✓ Sharp edged items should be avoided in order not to scratch vehicle (i.e. belts, watches, necklace)

2. Protect Seats when Mechanic Starts Working



- ✓ Seats, trimming, upholstery stuff and carpeting should be protected with appropriate coverings.

3. Welding on the Chassis

- a. Always disconnect the batteries (starting with the negative lead).
- b. Disconnect the connectors of electrical and electronic equipment (electronic control units, sensors and actuators) if they are less than 2 meters away from the chassis part to be welded or the earth terminal of the welding equipment.
- c. The earth terminal should never be attached to vehicle components such as engine, axles and springs. Arcing on these parts is not permitted, because of the risk of damage to bearings, springs, etc.
- d. The earth terminal must make good contact and be placed as close as possible to the part to be welded.
- e. Plastic pipes, rubber parts and parabolic springs should be well protected against welding spatter and temperatures higher than 70°.
- f. The contact switch must not be in the accessory or contact position. The contact key should be removed.
- g. Reconnect in reversed order of disconnecting. Ensure that a good earth connection is made between chassis, engine and cab.

INCLUDED PARTS LIST

	Part No	Part Name	Picture	Qty	Unit of Measure
	9431-14Y	DIYOT(10A05.DC(10A)		3	Qty

The program Link

Kibes :

** TS02-LC3-005 software should be installed on vehicles with software starting with TS02-LC3-...

<https://content.temsa.com/sapcs?get&pVersion=0045&contRep=ZADNSPEKTEP07101&docId=0050568F725E1EEE5DDB7DAC19524B8&accessMode=r&compld=TS02-LC3-005.zip>

Multiviu :

**TS02-MV-002 software should be installed on vehicles with software starting with TS02-MV-...

https://content.temsa.com/sapcs?get&pVersion=0045&contRep=ZADNSPEKTEP07101&docId=0050568F725E1EEEABF57C06E0CF24B8&accessMode=r&compld=TS02_MV_002.L2P.zip

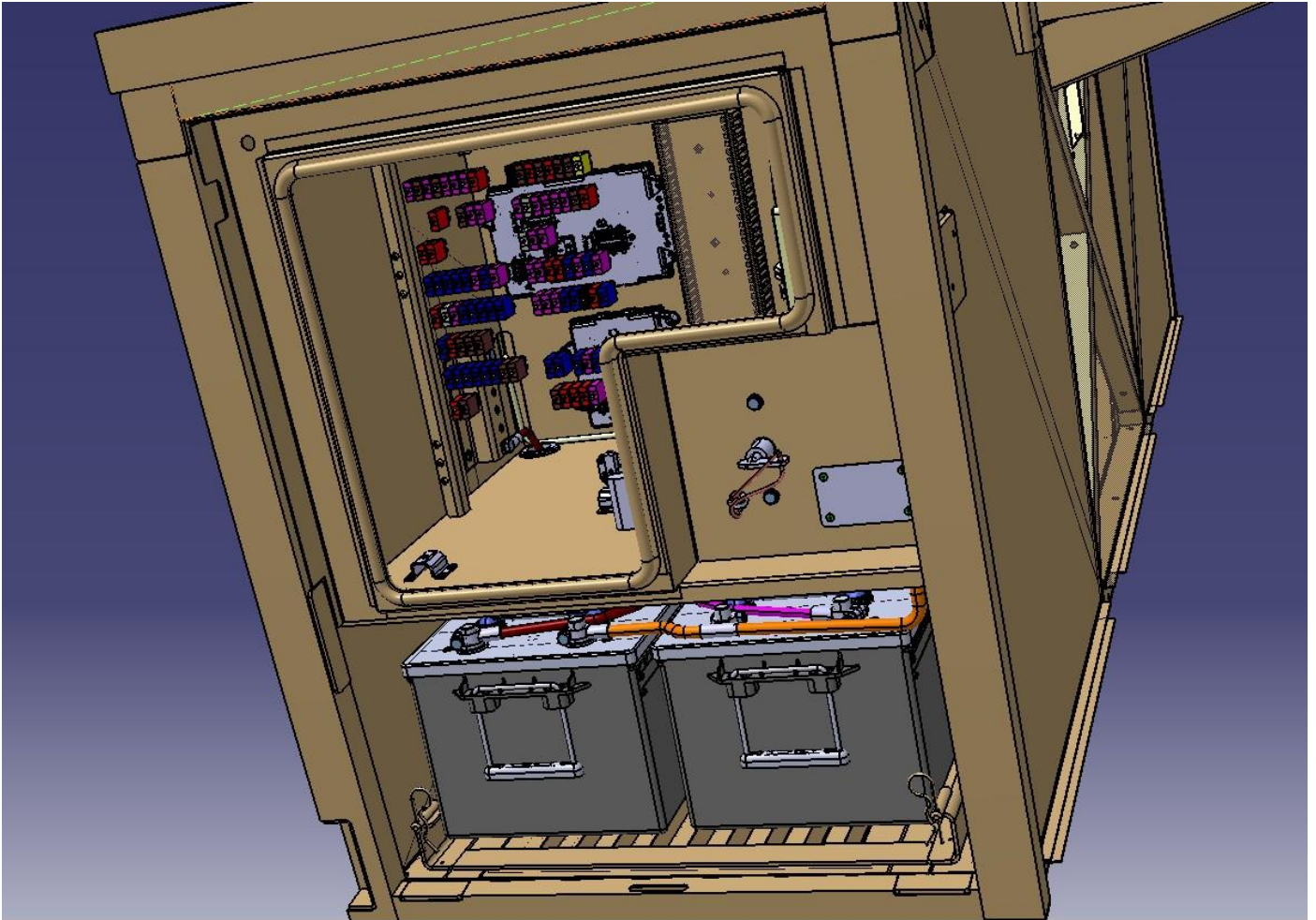
Important Note:

-The software mentioned above are up to date software. If there is previously published bulletin for these vehicles, please refer to this bulletin and install these software.

- Please note option selections before installing Kibes software. If the options are reset, after installing, reselect the same options.

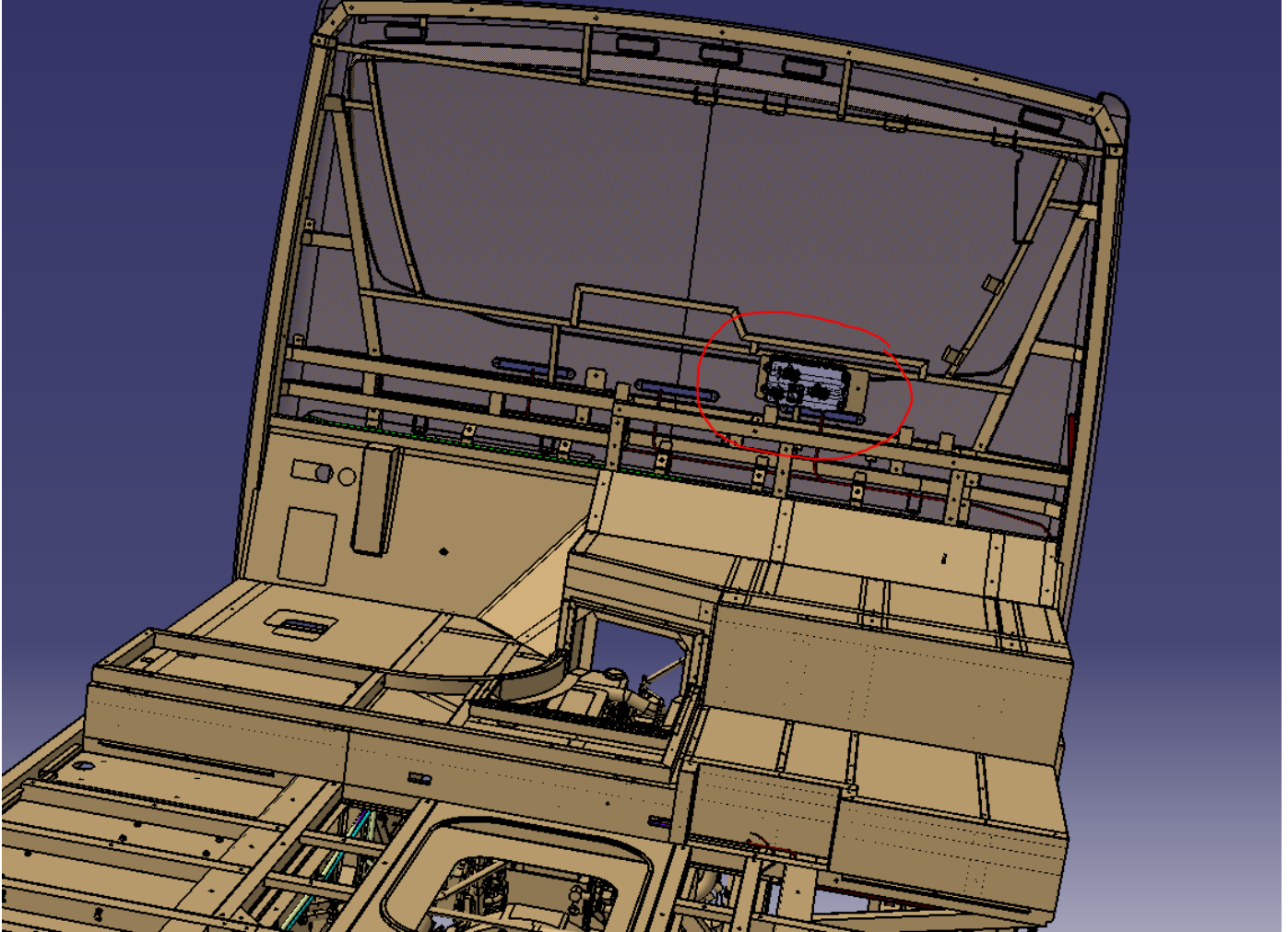
Diode Implementation

- 1-Open the front relay panel.
- 2-Locate the MUX5-B 1.1 Which is numbered as 06A033.



- 3-Locate the connector numbered P06A033-B
- 4- To its 15th and 16th pins do the operation explained below.
 - 1-Strip the cable from its 5 cm away from the connector side.
 - 2- Connect the diode's cathode pin to striped part of the cable.
 - 3- Connect the diode's anode pin to nearest ground cable.

- 5- Remove the back headlining which is at the back of the vehicle
- 6- Locate the MUX5-B 2.1 Which is numbered as 06A037.



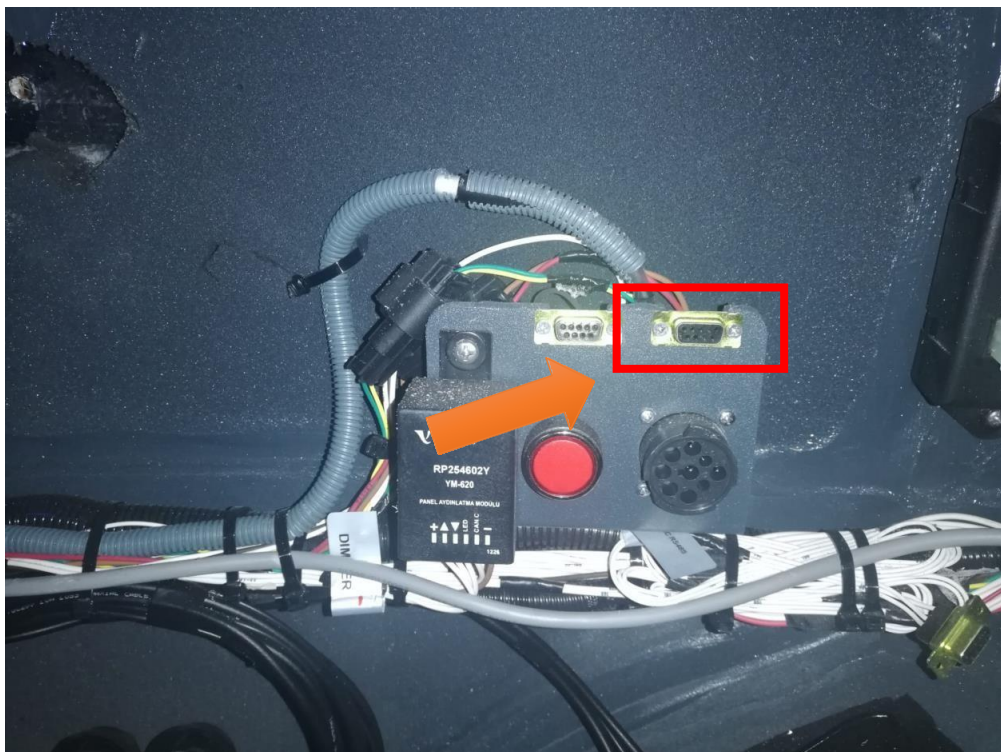
- 7- Locate the connector numbered as P06A037-C
- 8- To its 21st pin do the operation explained below.
 - 1-Strip the cable from its 5 cm away from the connector side.
 - 2- Connect the diode's cathode pin to striped part of the cable.
 - 3- Connect the diode's anode pin to nearest ground cable.

Uploading the up to date program(Kibes):

- 1- Park the vehicle to an area which is proper to work.

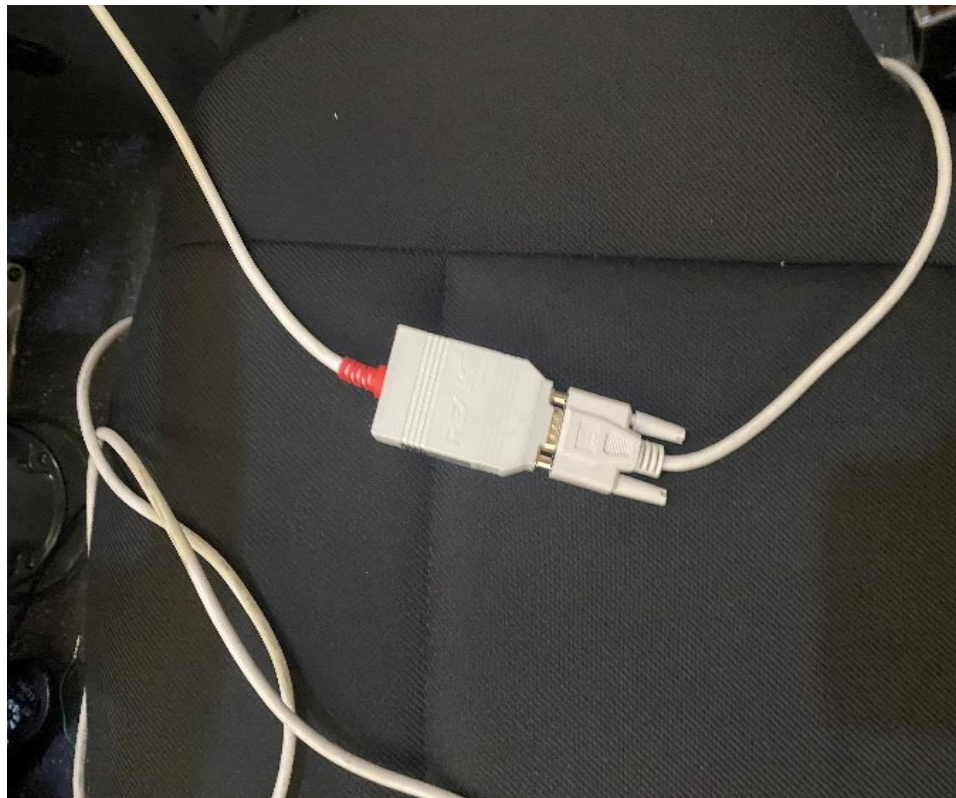
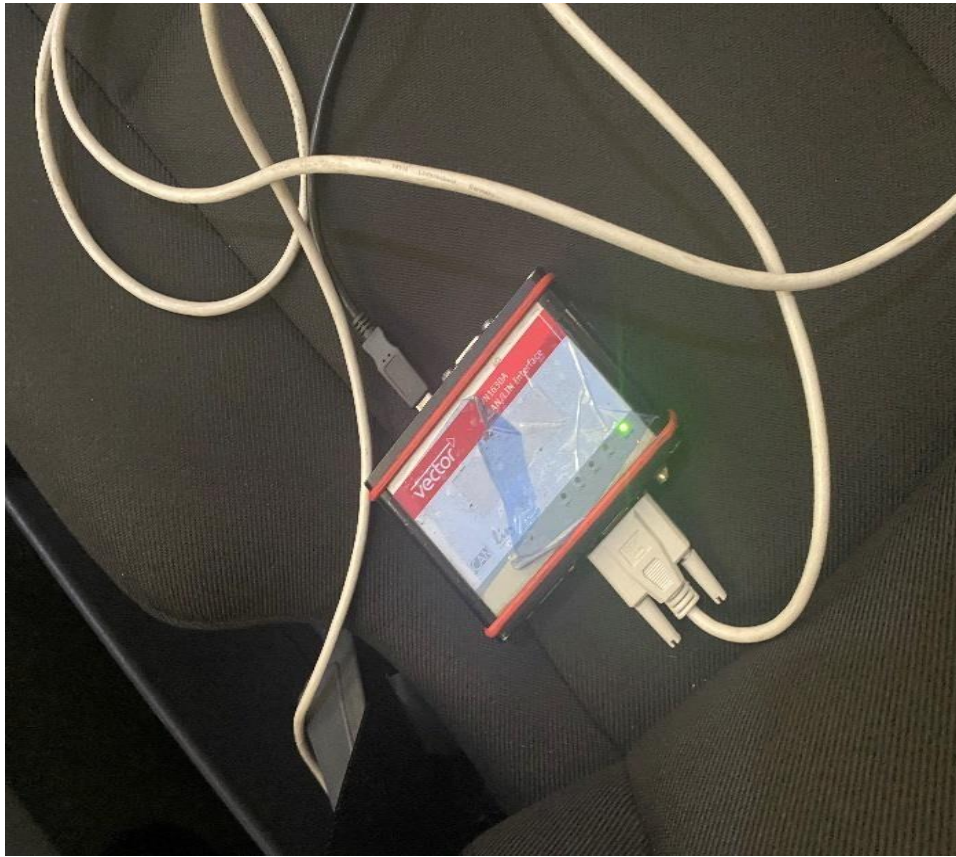


- 2- To install the KIBES software, locate the KIBES socket next to the OBD socket by looking at the label on the cover.

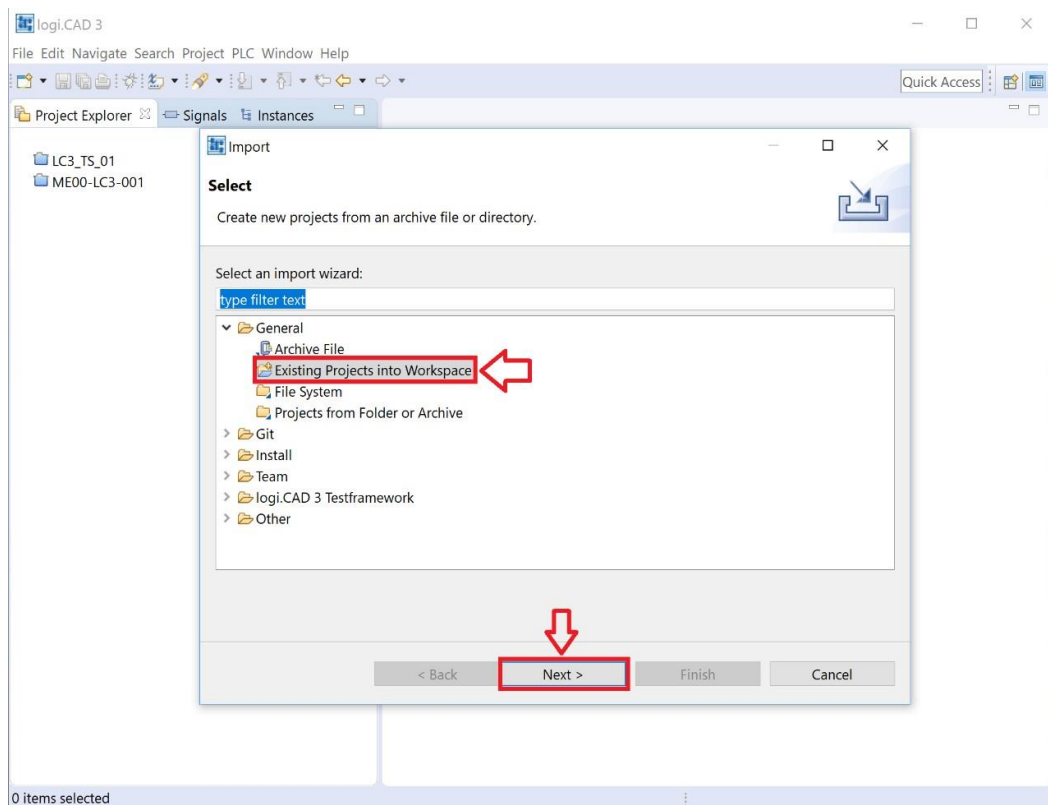
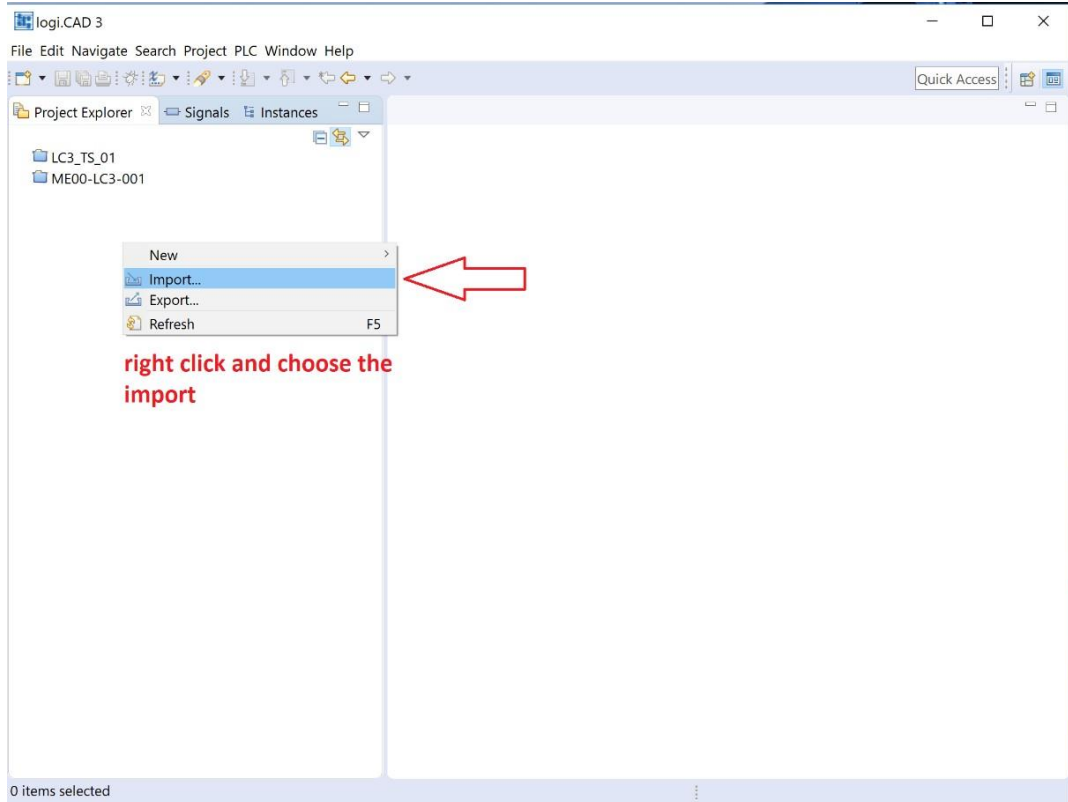


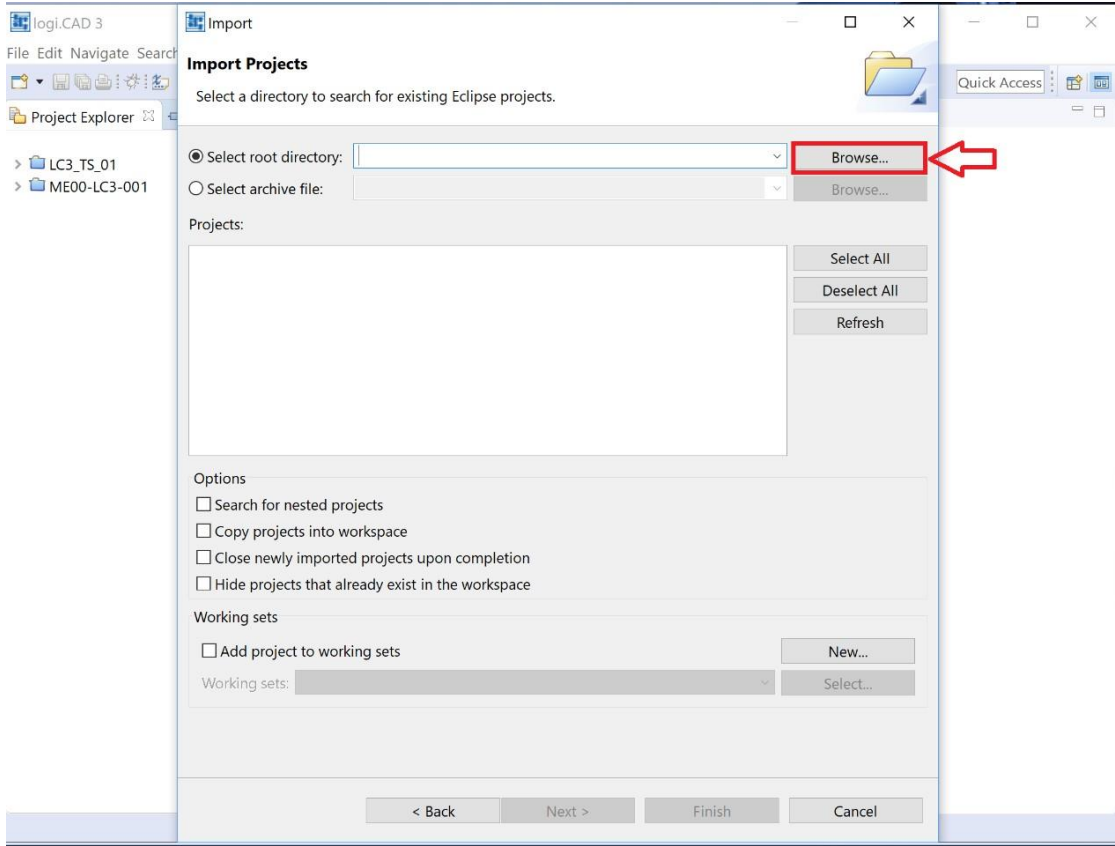
- 3- Connect one end of the KIBES cable to the CANalyzer or Peak cable and the other end to the KIBES diagnostic socket. Connect the CANalyzer or Peak output to the computer. Make sure that the KIBES dongle is inserted to your computer.



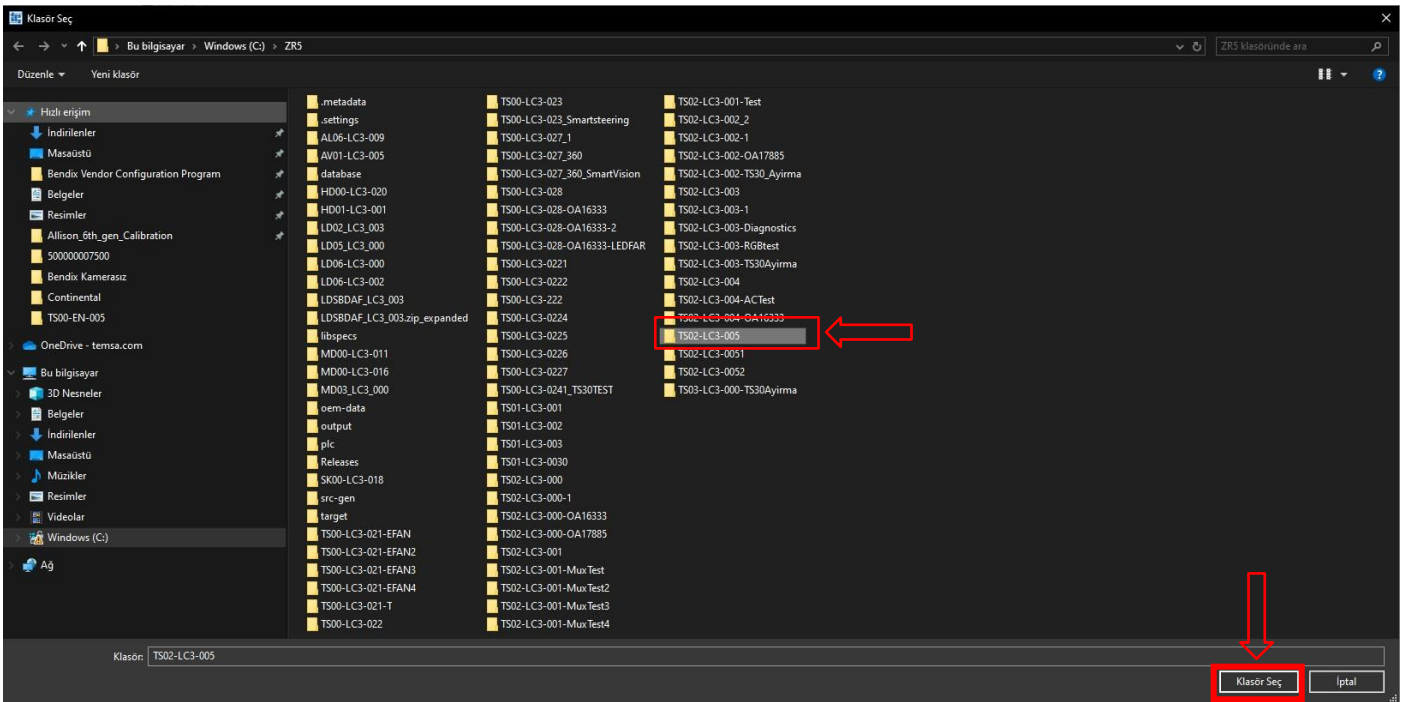


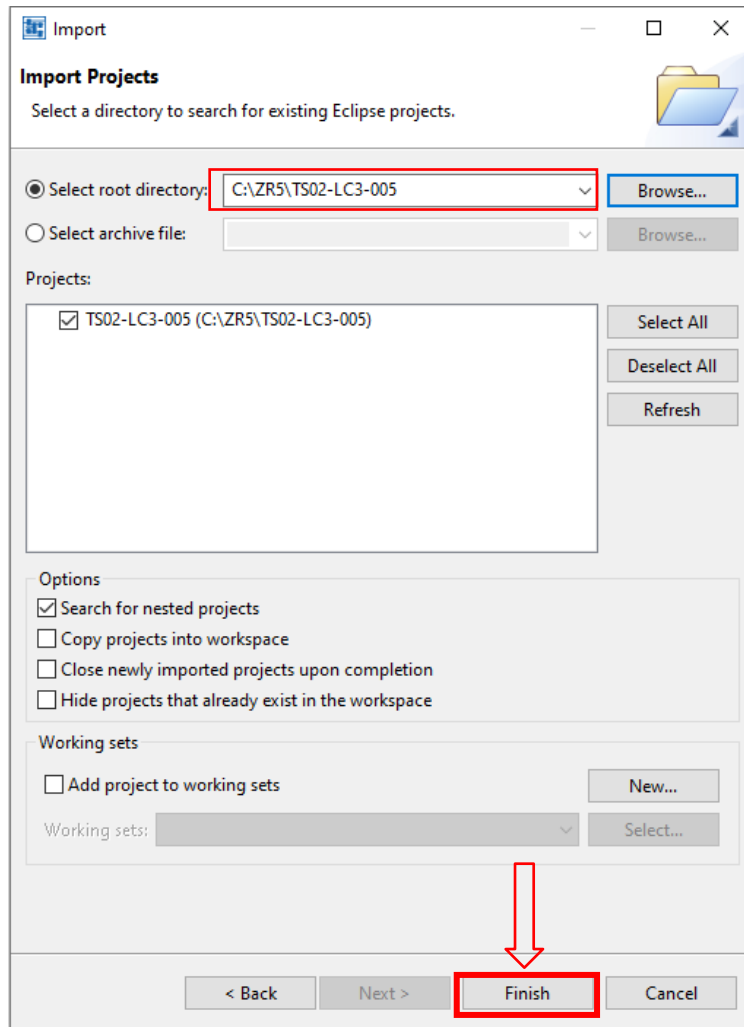
- 4- Install the KIBES software on the vehicle as described in the images. Turn the ignition switch on. Do not start the engine.



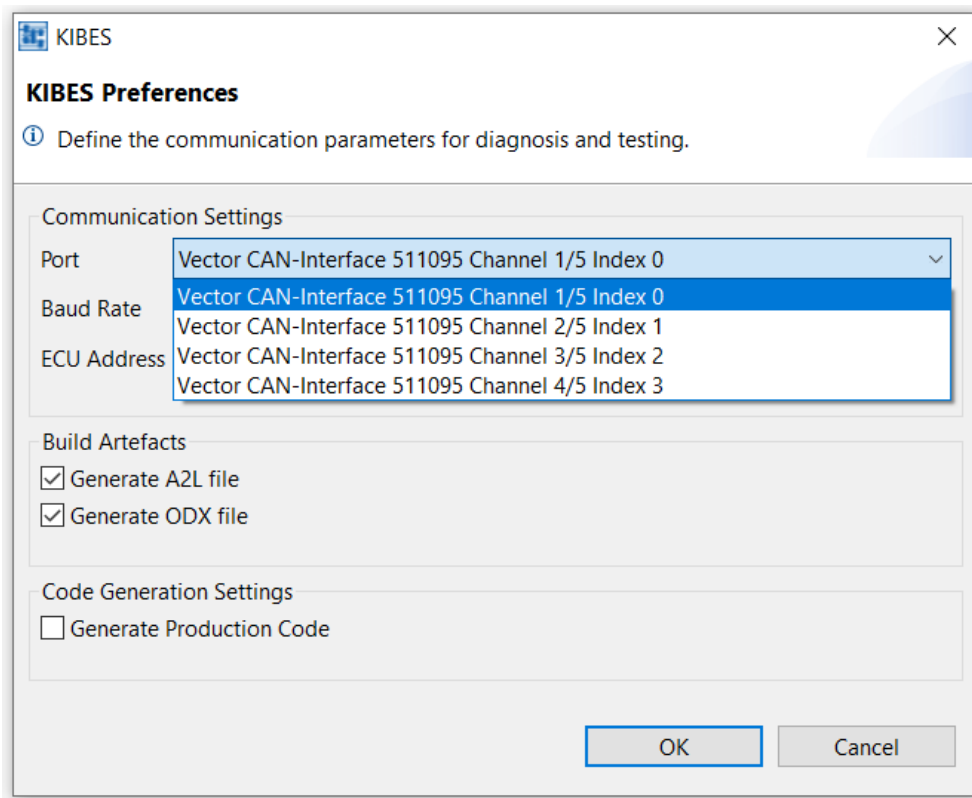
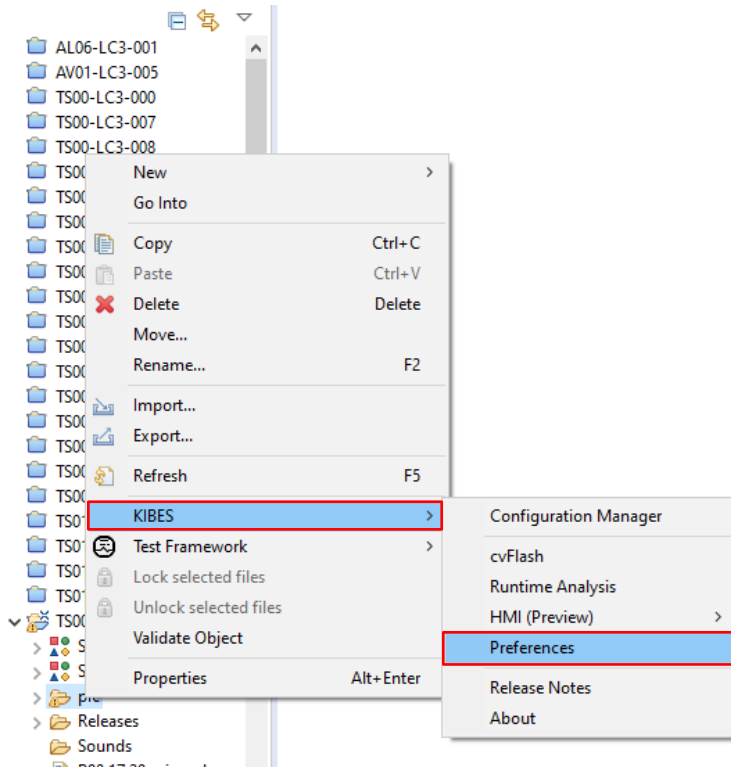


Hint: The software version must be selected correctly. The number shown in the picture may be representative.

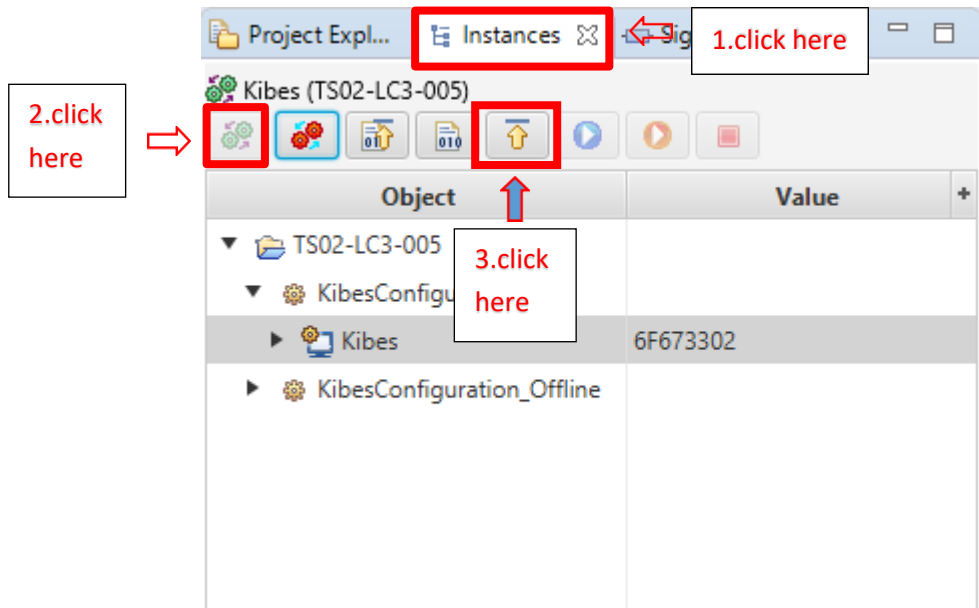




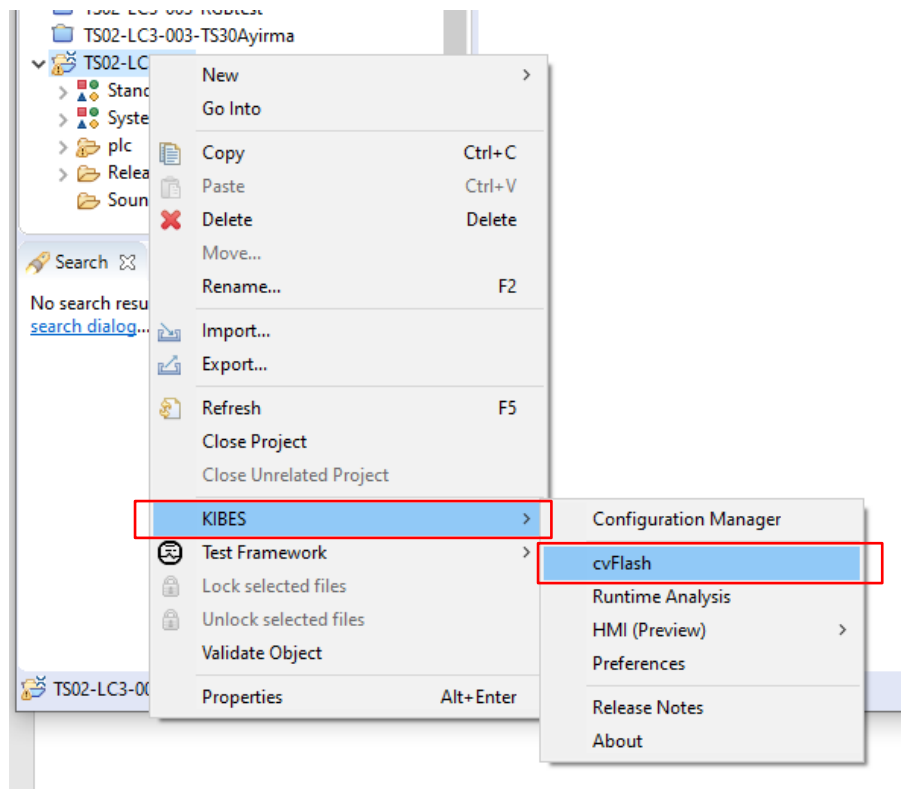
4.1- Click "Preferences" to check the **Baudrate** and **port**. (for TS Coachs 250000)

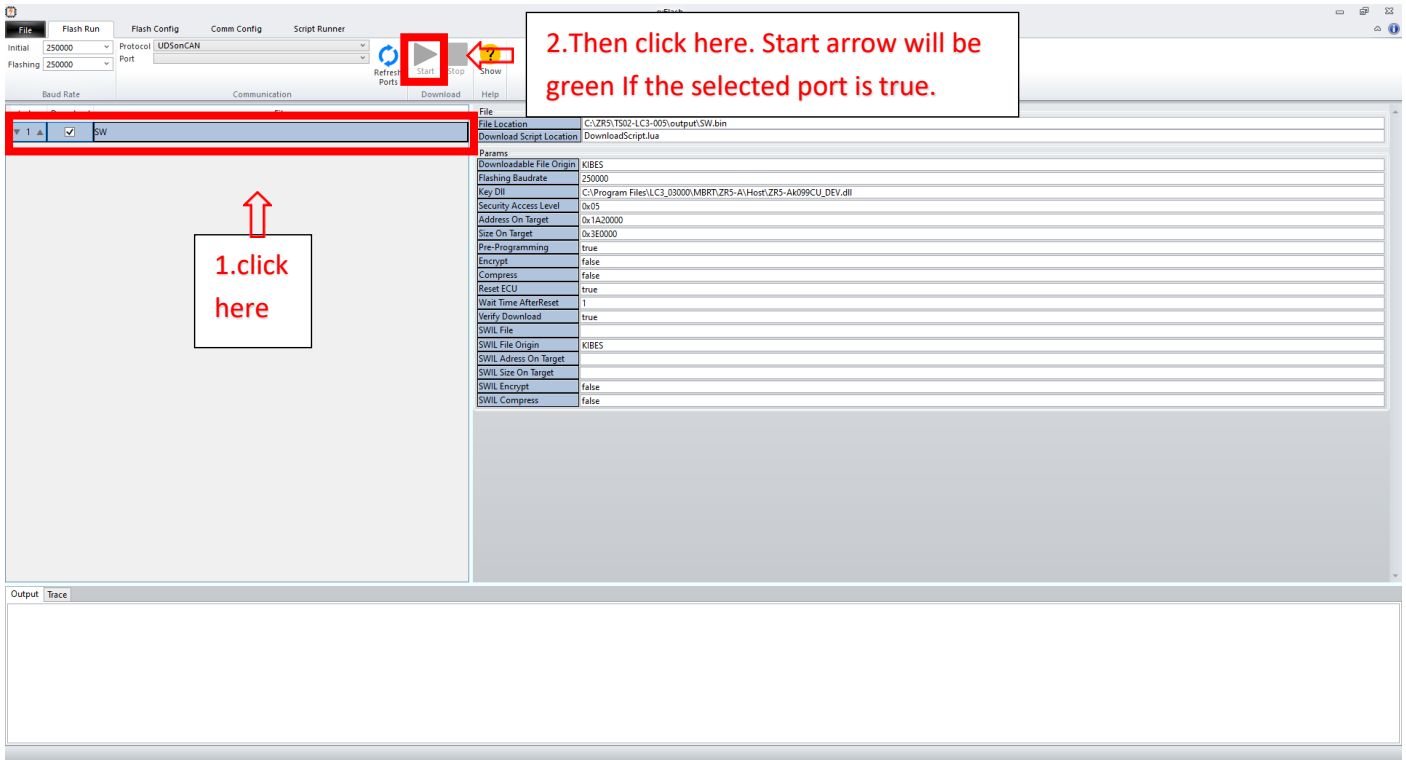


4.2- Click on the instructions shown in order in the picture.



4.3- If you get an error when you start loading of software, try CV flash download.





The screenshot shows the TEMESA software interface with several annotations:

- A red box highlights the 'Start' button in the 'Retest Ports' section, with a red arrow pointing to it and the text "1.click here".
- A red box highlights the 'Start' button in the 'Download' section, with a red arrow pointing to it and the text "2.Then click here. Start arrow will be green If the selected port is true."
- A red box highlights the 'SW' file in the file list, with a red arrow pointing to it and the text "1.click here".

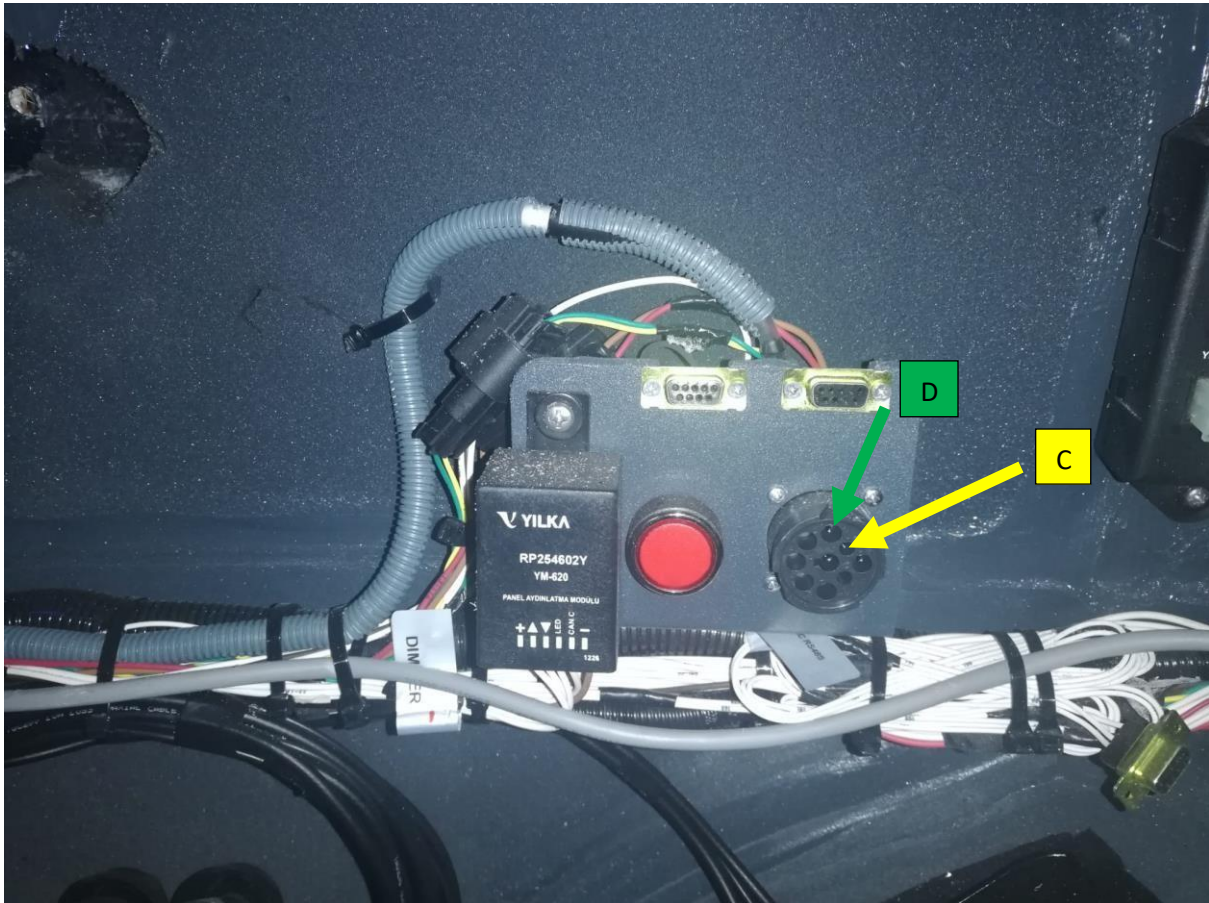
The interface includes a menu bar (File, Flash Run, Flash Config, Comm Config, Script Runner), a toolbar (Initial, Flashing, Baud Rate, Protocol, Port, Retest Ports, Download, Help), and a main area with a file list and a parameters table.

File Location	Download Script Location
C:\ZRS\T912-LC3-005\output\SW.bin	DownloadScript.lua

Params	
Downloadable File Origin	KIBES
Flashing Baudrate	250000
Key Dll	C:\Program Files\LC3_03000\MBRT\ZRS-A\Host\ZRS-Ak099CU_DEV.dll
Security Access Level	0x05
Address On Target	0x1A20000
Size On Target	0x3E0000
Pri-Programming	true
Encrypt	false
Compress	false
Reset ECU	true
Wait Time AfterReset	1
Verify Download	true
SWIL File	
SWIL File Origin	KIBES
SWIL Address On Target	
SWIL Size On Target	
SWIL Encrypt	false
SWIL Compress	false

Uploading the up to date program (Multiviu):

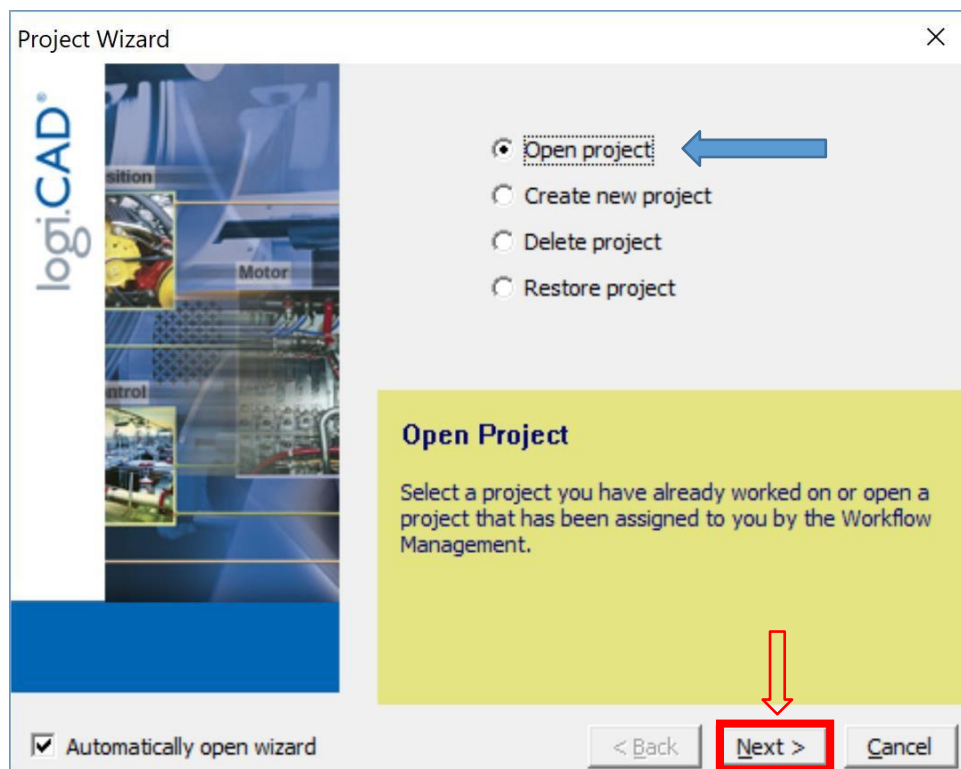
- 1-Park the vehicle to an area which is proper to work.
- 2-Connect your computer to the vehicle by using the CANalyzer interface. Plug the USB part into your computer and connect your CAN cable to the 9 pinned OBD port with the **D** pin low and the **C** pin high.

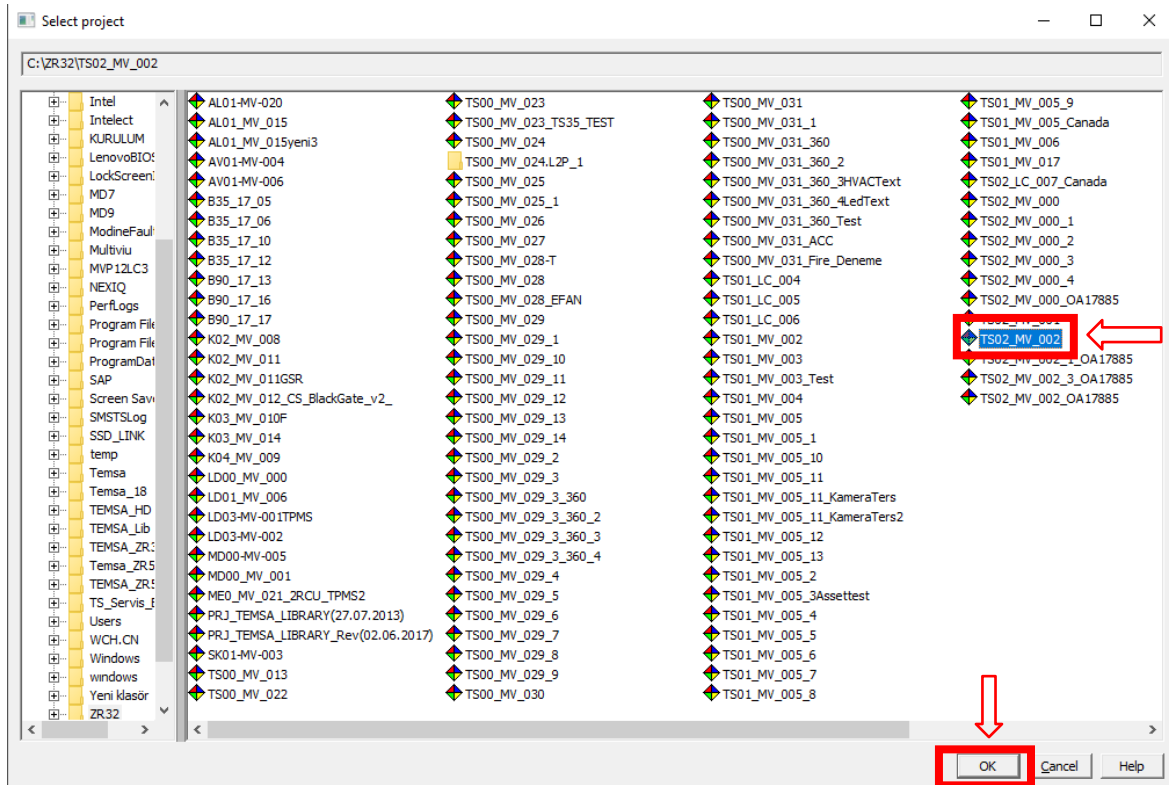
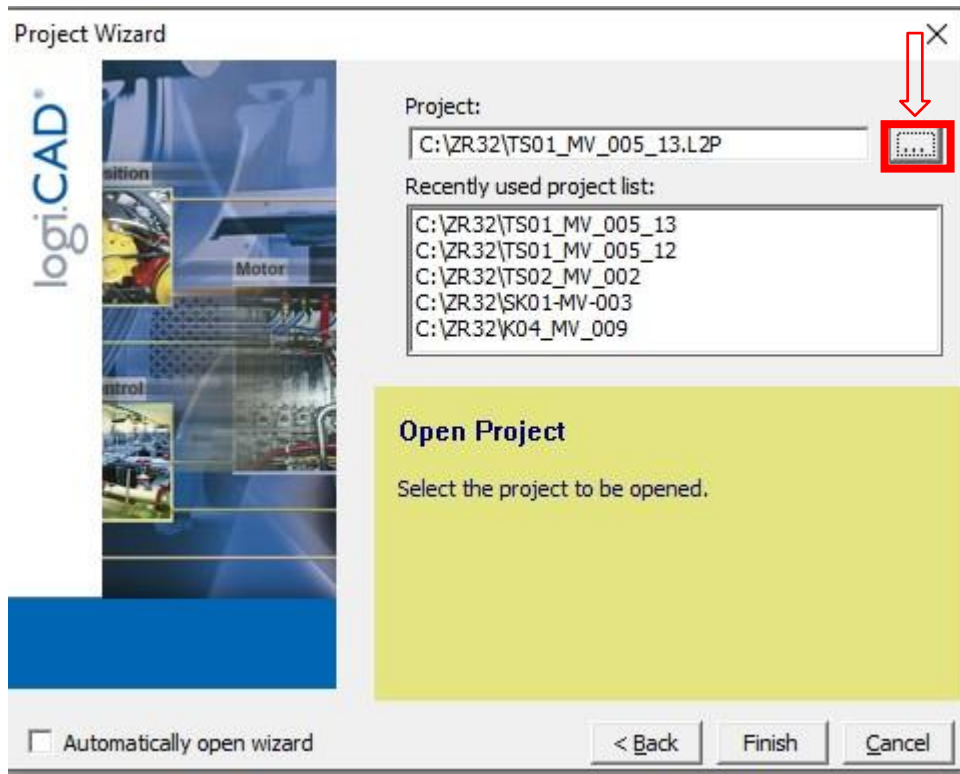


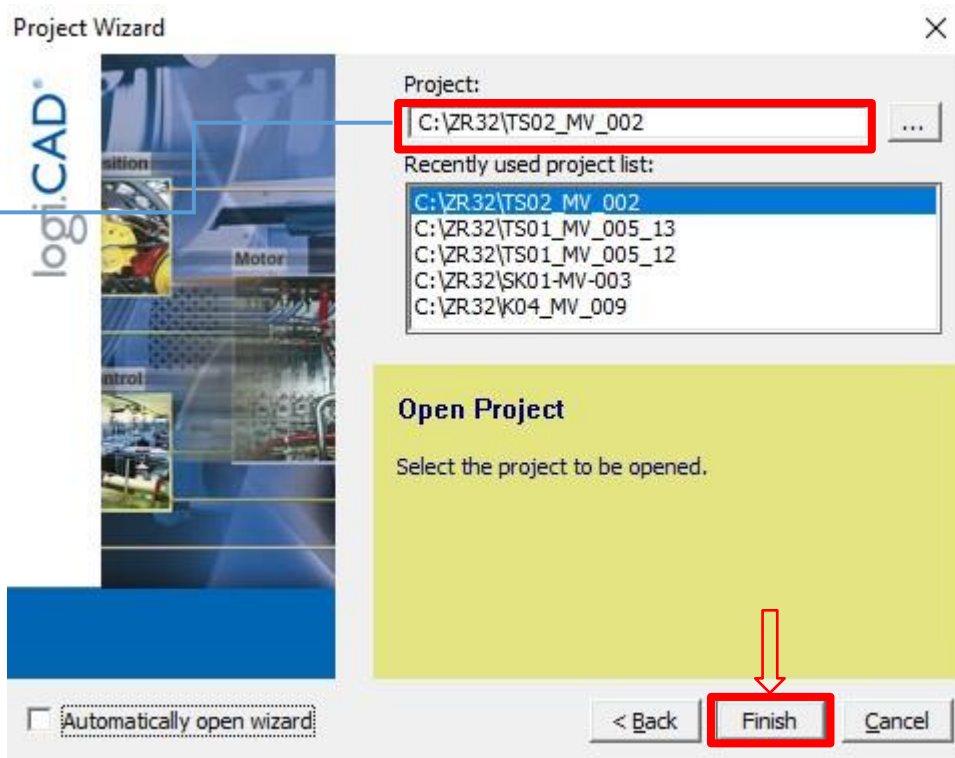
- 3- Turn the ignition switch on. Do not start the engine.
- 4- Make sure that the KIBES dongle is inserted to your computer.



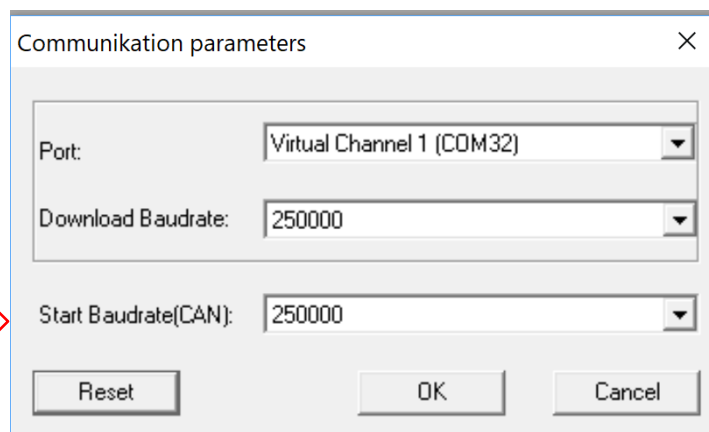
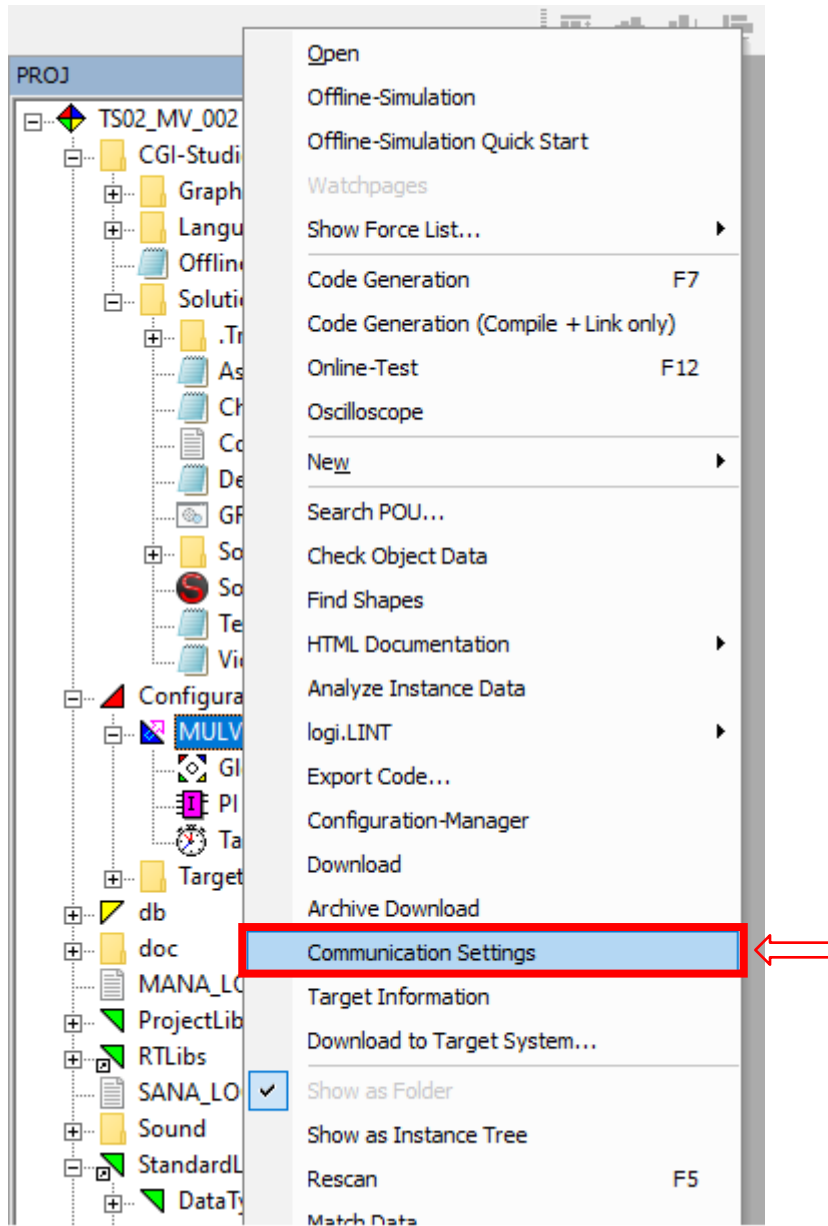
- 5- Select the "Open Project" selection and click "next".







6-Right click on Mulviu then click “Communication Settings” check the Port and Baudrate.

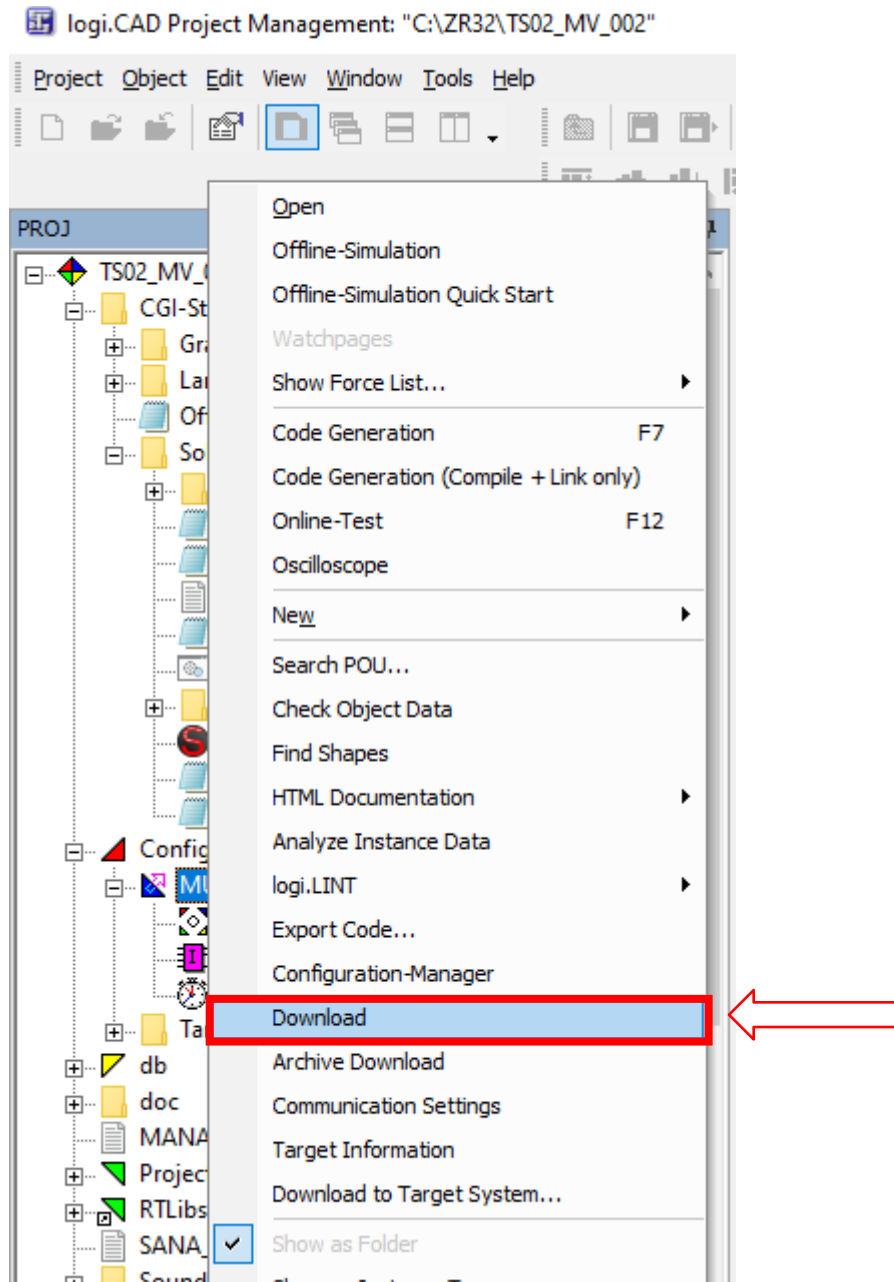


You can change
“Start Baudrate”
here

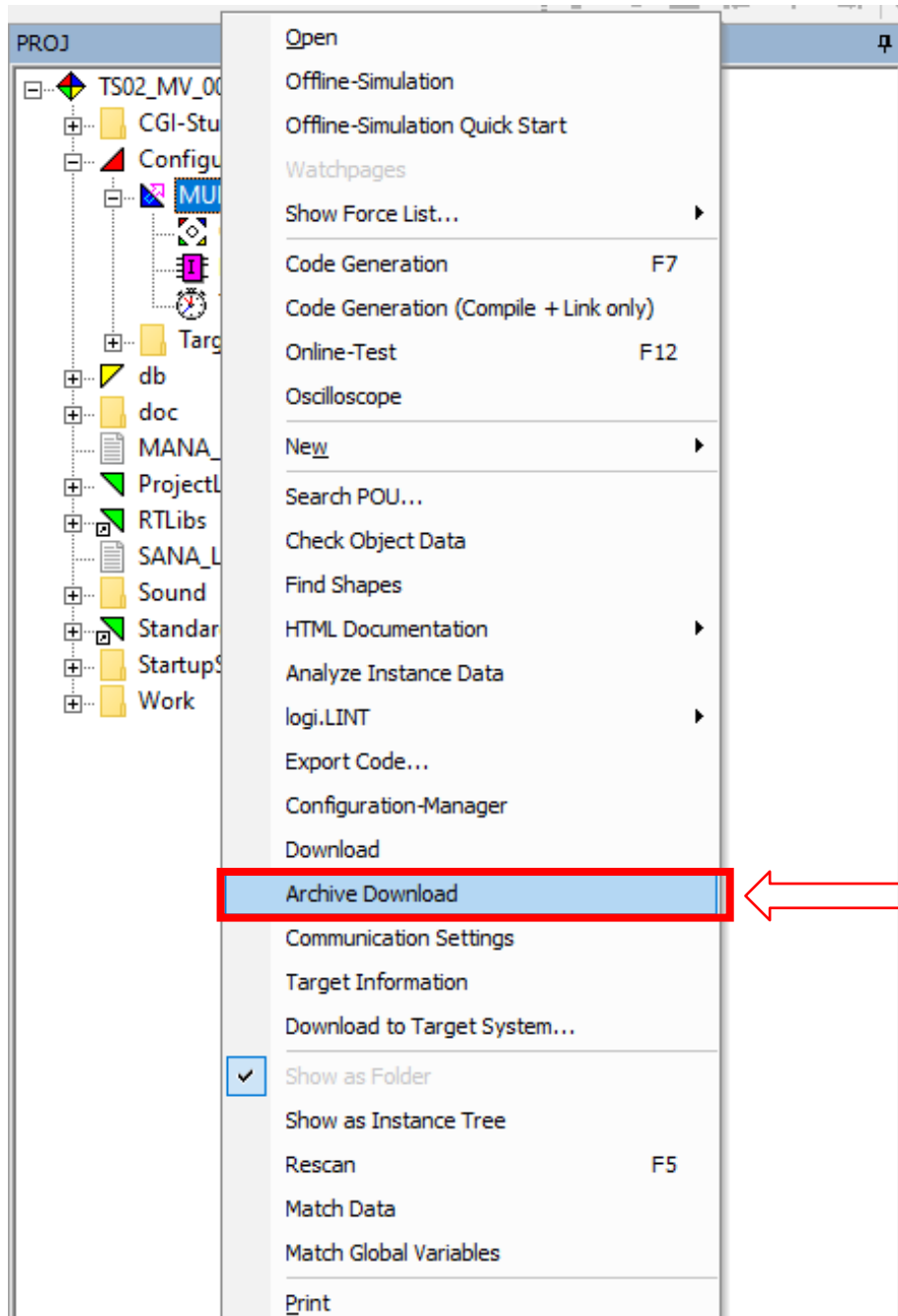
You can change port
here. Please make
sure correct port.

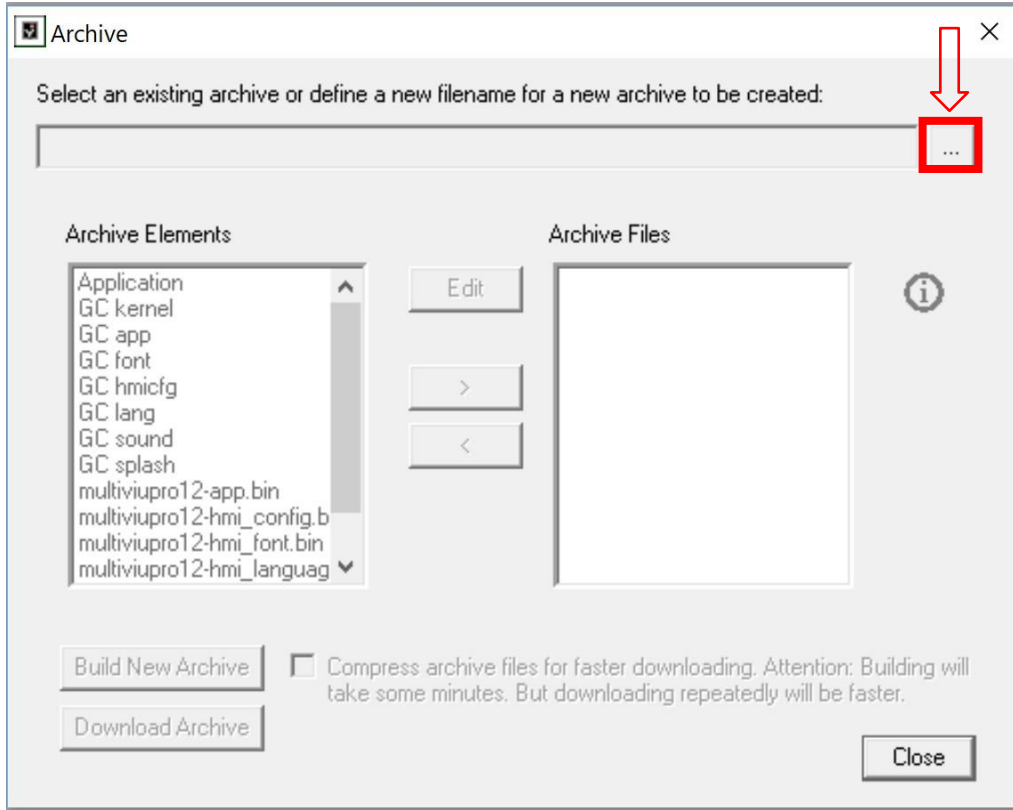
You can change
“Download
Baudrate” here

7-Then Right click on Mulviu, Download the logic side of the program.

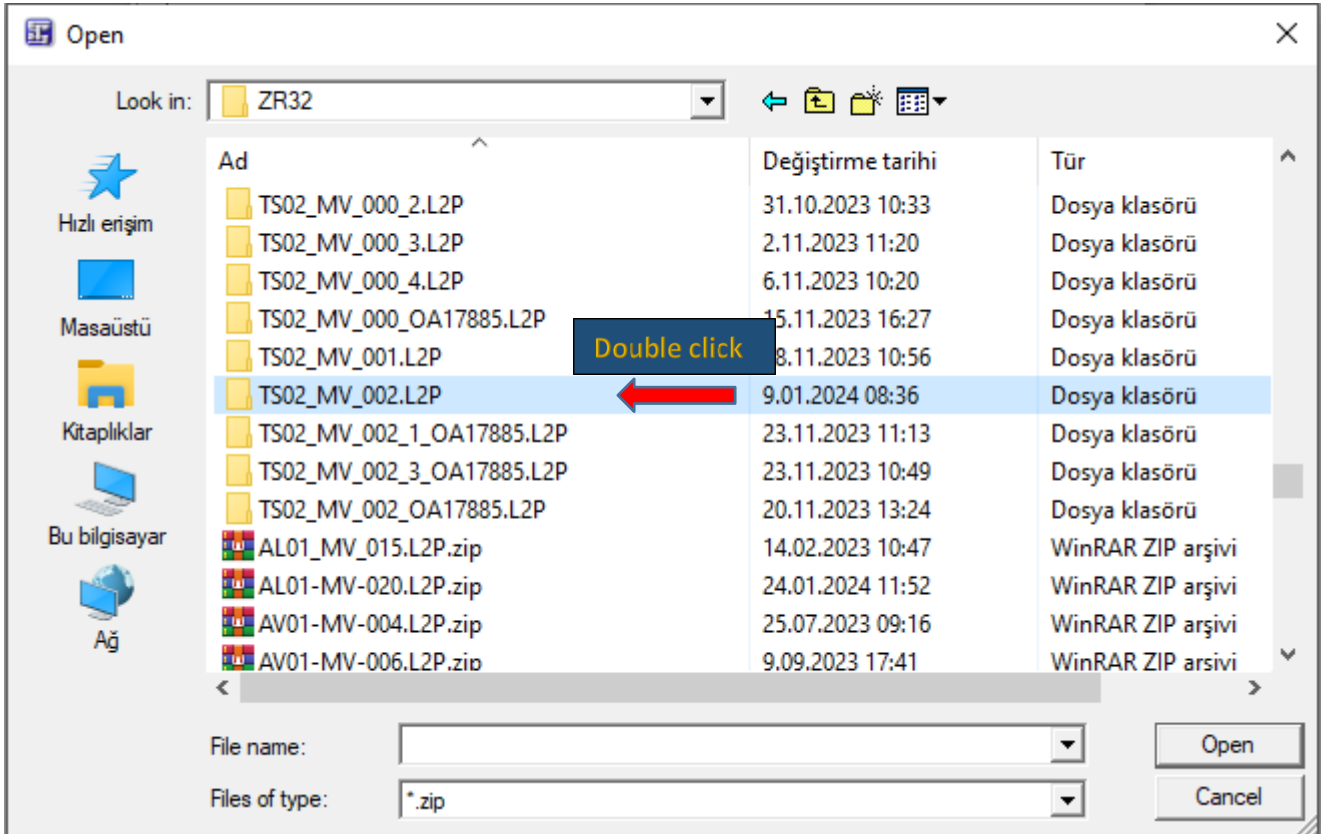


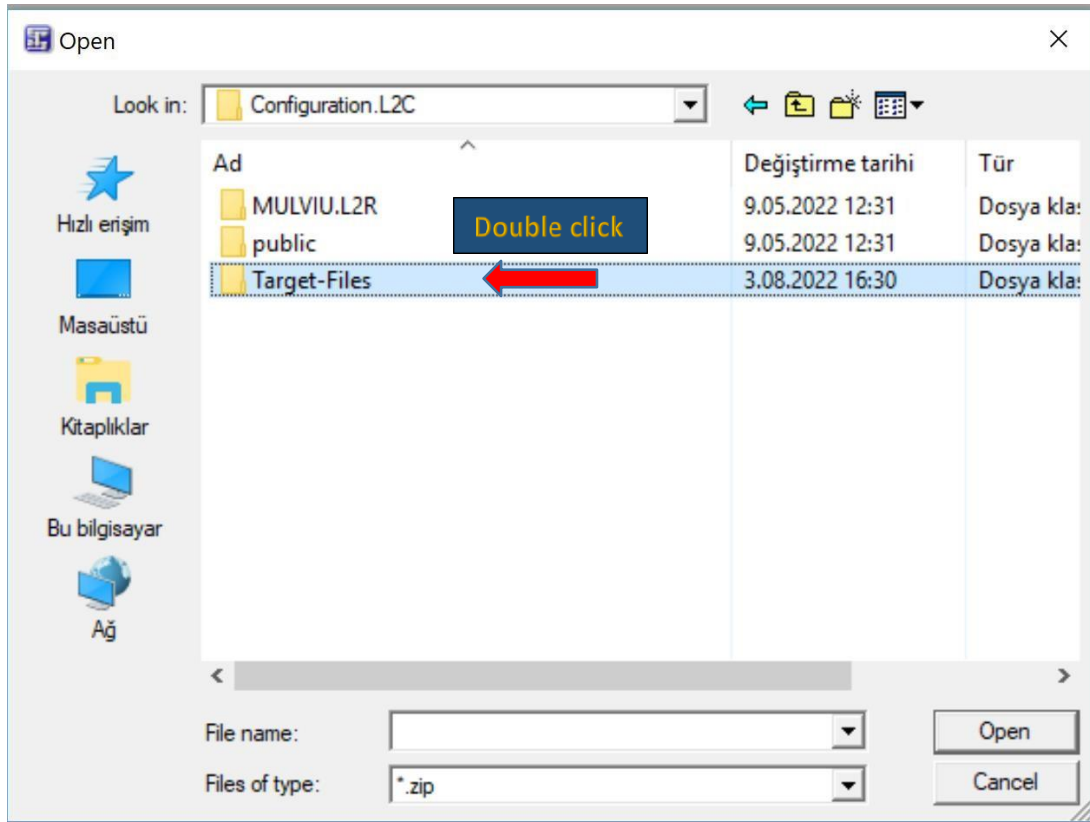
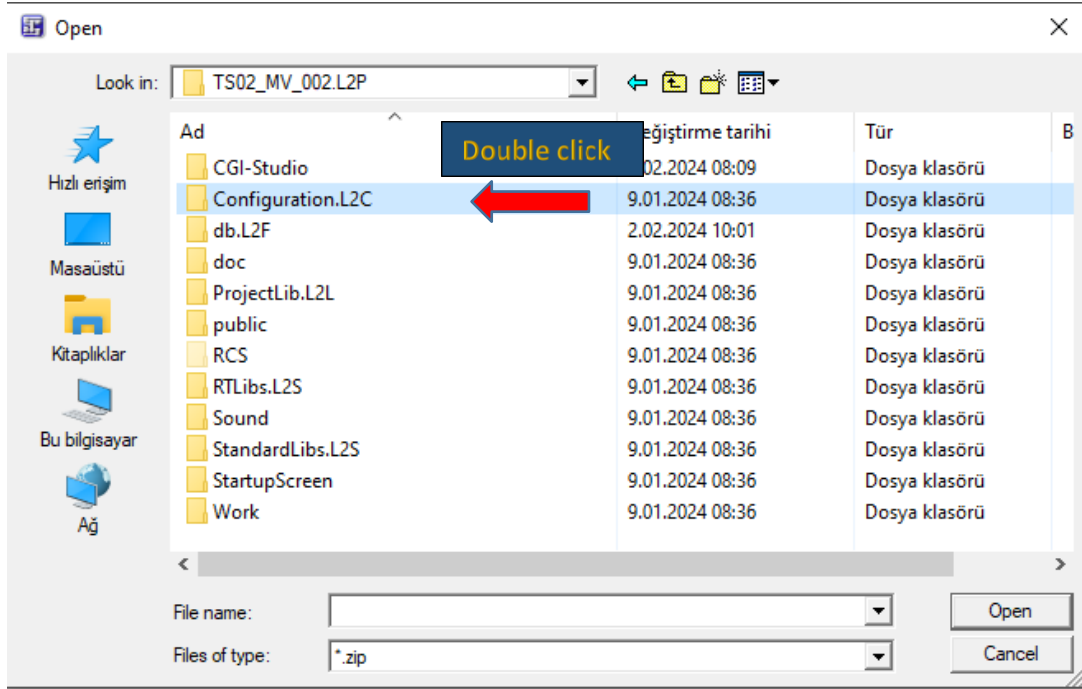
8-Right click on Mulviu again then click “Archive Download”



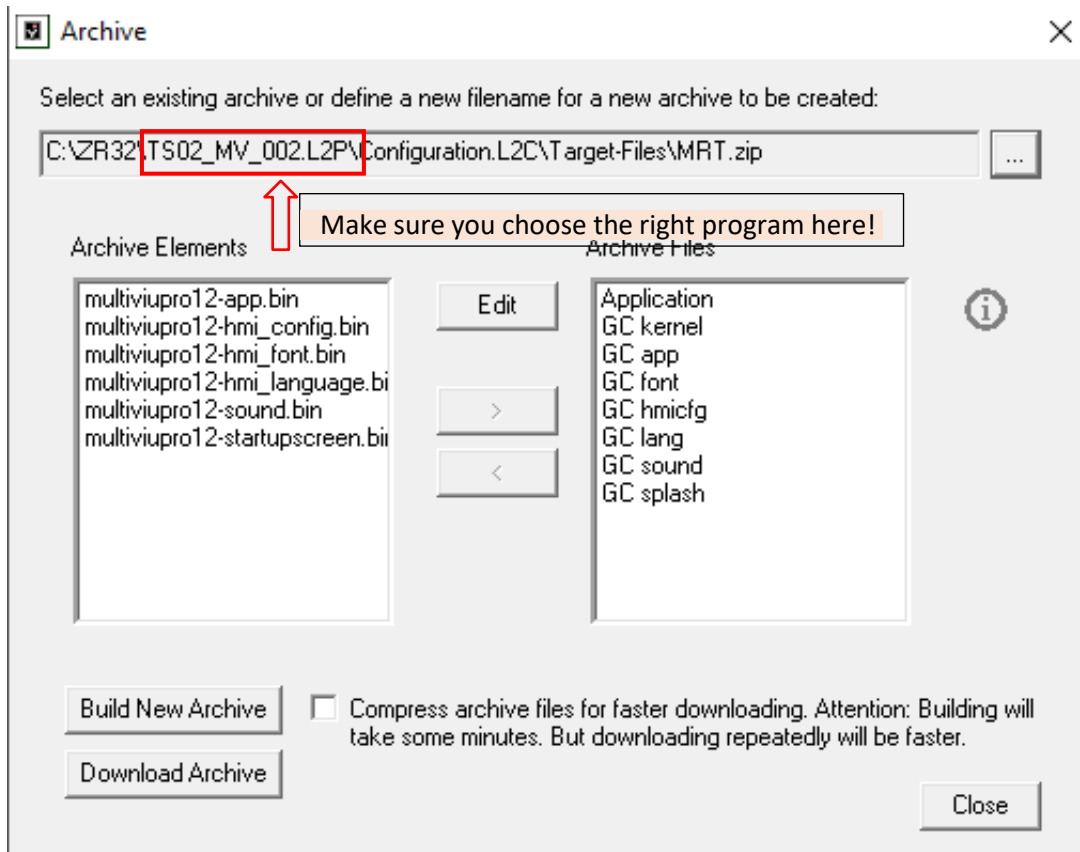
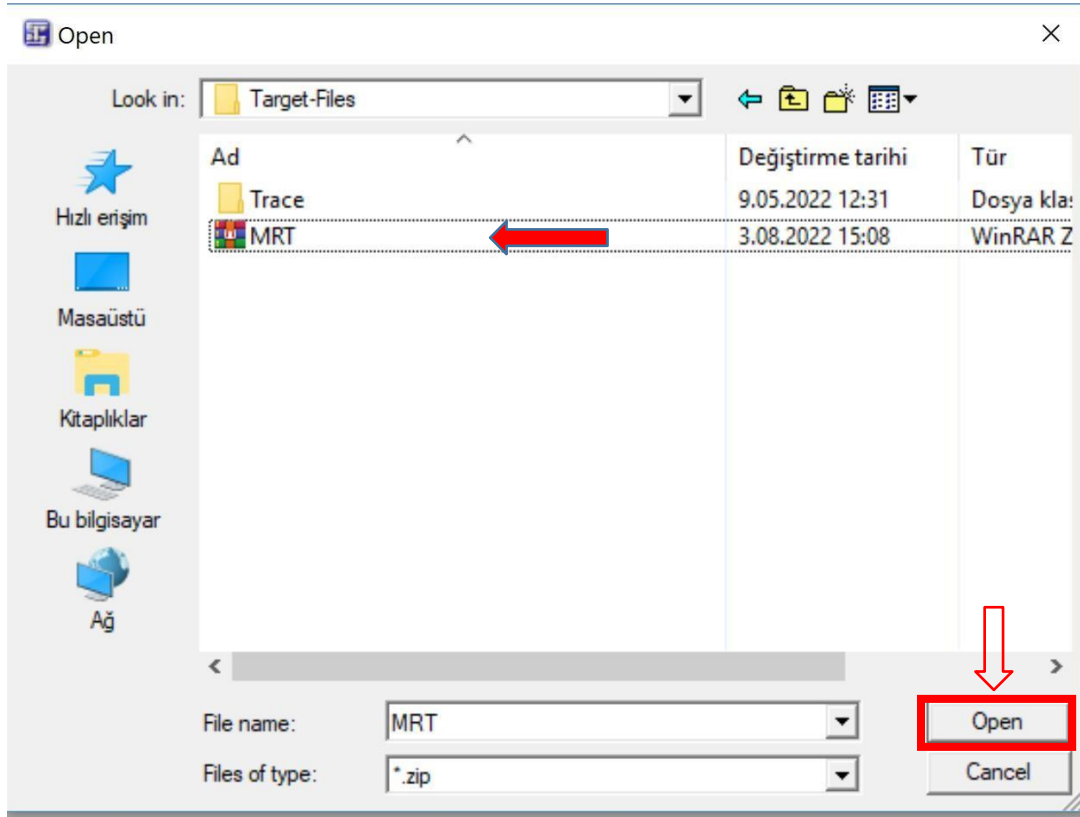


9- You should find program in your workspace then double click the program.

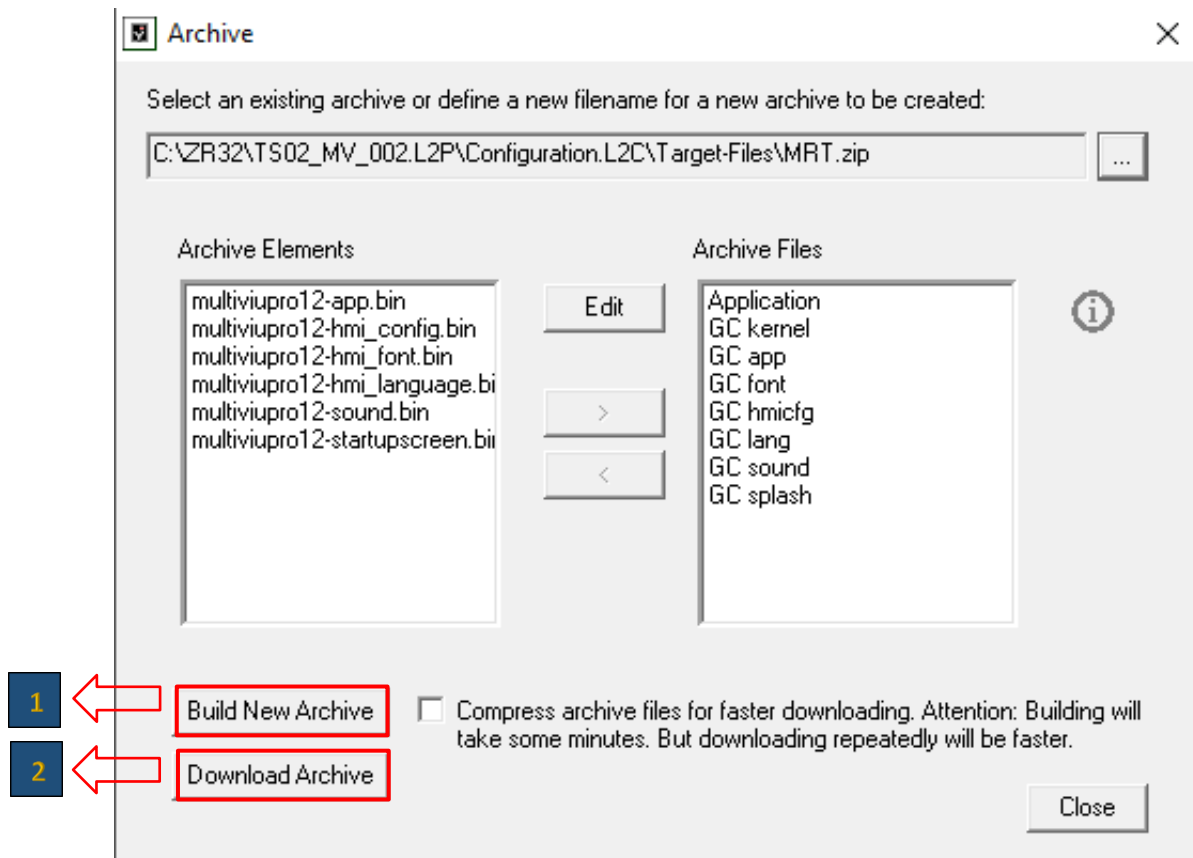




10- Click on “MRT” then click “Open”.



11- After the software is checked, click the “Build New Archive”, then click the “Archive Download”.



12- When a warning occurs, click OK, then wait for the program to be downloaded. Do not cut the power off during the download process, this could cause the body controller to dysfunction.

VEHICLE LIST

No	Otpa No	Chassis No	Model	Country
1.	OA15607	NLTRPPA76M1000606	TS35	USA
2.	OA17110	NLTRPPA72R1000609	TS35	USA
3.	OA17135	NLTRPPA79R1000610	TS35	USA
4.	OA17148	NLTRPPA79R1000607	TS35	USA
5.	OA17149	NLTRPPA70R1000608	TS35	USA
6.	OA17180	NLTRPPA70R1000611	TS35	USA
7.	OA17181	NLTRPPA72R1000612	TS35	USA
8.	OA17200	NLTRPPA74R1000613	TS35	USA
9.	OA17212	NLTRPPA76R1000614	TS35	USA
10.	OA17266	NLTRPPA78R1000615	TS35	USA
11.	OA17267	NLTRPPA7XR1000616	TS35	USA
12.	OA17268	NLTRPPA71R1000617	TS35	USA
13.	OA17269	NLTRPPA73R1000618	TS35	USA
14.	OA17353	NLTRPPA75R1000619	TS35	USA
15.	OA17354	NLTRPPA71R1000620	TS35	USA
16.	OA17355	NLTRPPA73R1000621	TS35	USA
17.	OA17356	NLTRPPA75R1000622	TS35	USA
18.	OA17357	NLTRPPA77R1000623	TS35	USA
19.	OA17358	NLTRPPA79R1000624	TS35	USA
20.	OA17457	NLTRPPA70R1000625	TS35	USA
21.	OA17484	NLTRPPA72R1000626	TS35	USA
22.	OA17575	NLTRPPA74R1000627	TS35	USA
23.	OA17576	NLTRPPA76R1000628	TS35	USA
24.	OA17577	NLTRPPA78R1000629	TS35	USA
25.	OA17688	NLTRPPA74R1000630	TS35	USA
26.	OA17689	NLTRPPA76R1000631	TS35	USA
27.	OA17745	NLTRPPA78R1000632	TS35	USA

LABOR BREAKDOWN

Application	Time
Downloading ZR5 Kibes Program	5m
Downloading Multiviu Program	5m
Archive Downloading of Multiviu	40m
Implementing Diodes	70m
Total Labor Time	120m