



Technical Service Bulletin

GROUP GENERAL INFORMATION	NUMBER 24-GI-003H
DATE FEBRUARY 2024	MODEL(S) NEXO (FE)

SUBJECT: PRECAUTIONS FOR PAINTING NEXO

Description: This bulletin is a reminder to exercise caution when painting the Nexo, Fuel Cell Electric Vehicle (FCEV).

During the painting processes, Volatile Organic Compounds (VOCs) may enter the fuel cell through openings or micro gaps in the intake or exhaust piping for the fuel cell. VOCs may damage certain components in the fuel cell causing reduced fuel-cell performance.

VOC chemicals can harm the fuel cell system's performance. Precaution must be taken to seal openings for the fuel cell system before painting or placing Nexo in a curing oven.

Applicable Vehicles: All Nexo (FE) vehicles

⚠ WARNING

To prevent an excessive rise in pressure within the hydrogen tank, limit heat treatment to 30 minutes and below a temperature of 140°F (60°C).
Exceeding 230°F (110°C) can cause the Hydrogen tank to completely vent which may cause flammable or explosive conditions in the curing oven.
Refer to the "General Information" section in the Nexo body repair manual, service manual for more information.

Service Procedure:

Option 1 – Remove Parts for Painting & Curing

- i Information**

Park vehicle in a VOC-free area before painting the removed parts.

Remove parts from the vehicle that need repair and/or painting.

Paint and perform curing of the parts before reinstalling the parts.
- The procedure is now complete.

Option 2 - Seal Openings & Push Nexo in/out of Paint Booth and Curing Oven

1. Refer to **TSB 24-GI-002H**, to maintain the transmission in **NEUTRAL (N)**.

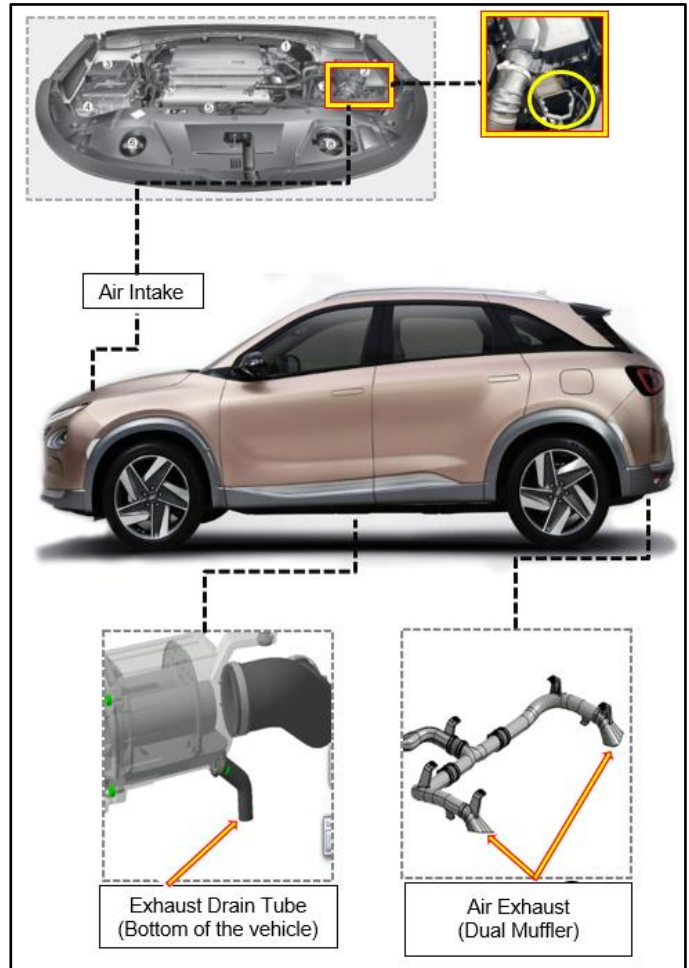
i Information

Perform this option if the assembled parts cannot be removed from the vehicle for painting and heat treatment.

Locate and clean all intake and exhaust openings to ensure a good contact with a suitable tape.

! CAUTION

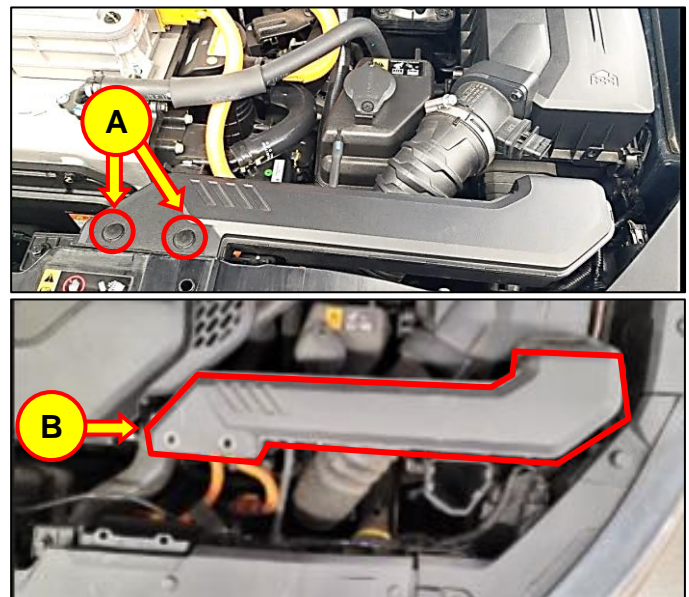
A capable person **MUST** always be in the driver's seat to steer and stop the vehicle as needed. Always use wheel chocks to prevent the vehicle from rolling.



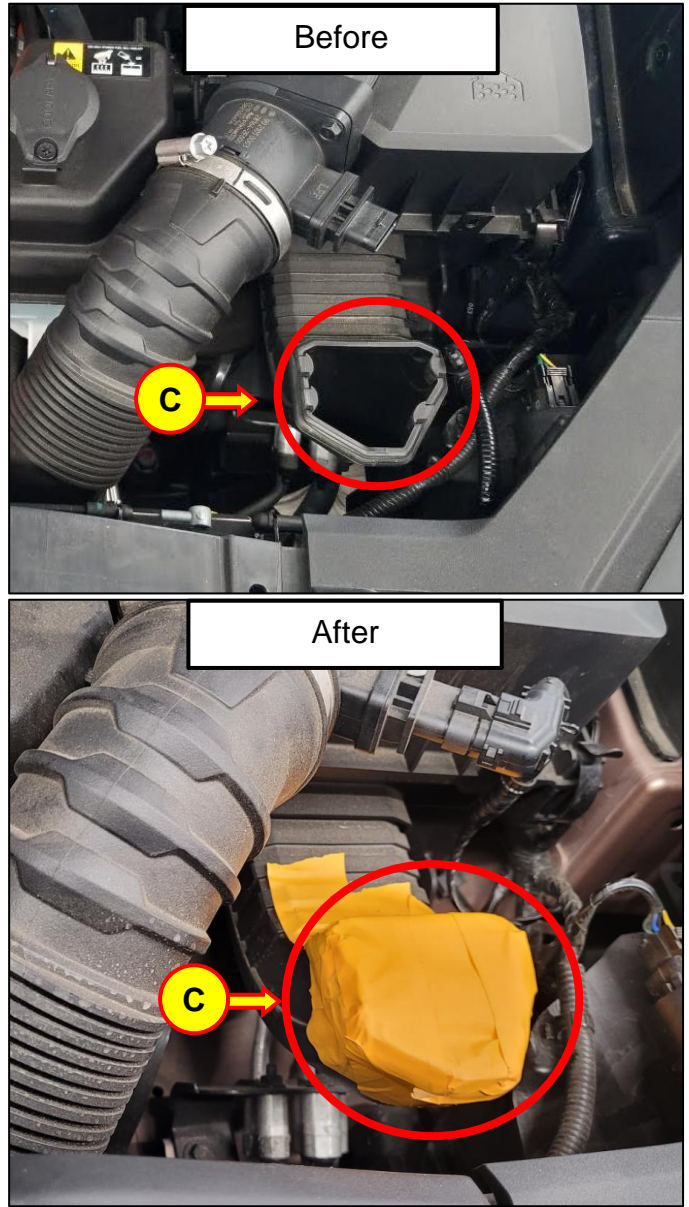
2. Locate the air intake under the hood.

Remove the trim clips (A) first and air intake extension (B) afterwards.

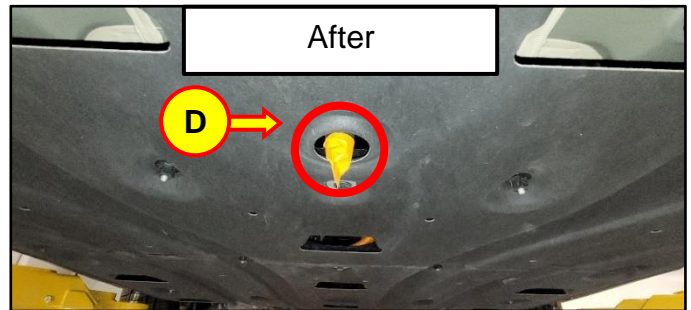
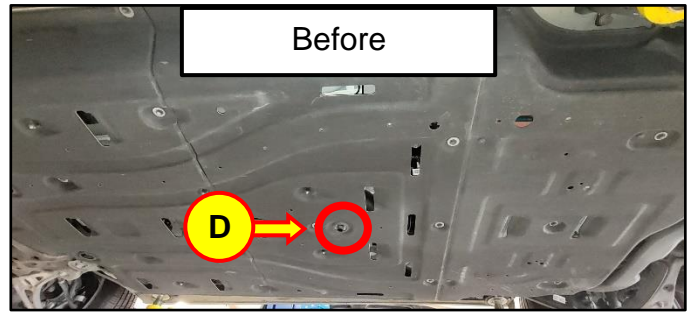
Store all parts in a VOC-free area.



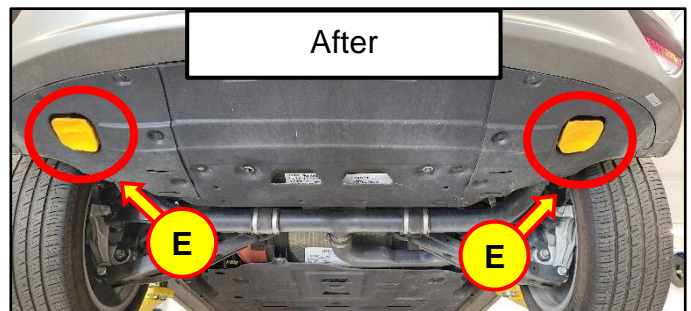
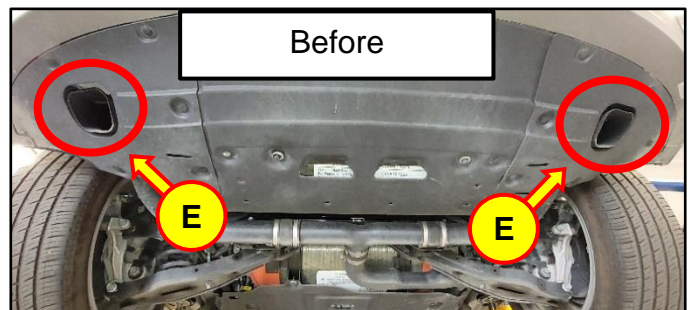
3. Seal the intake opening with tape (C).



- 4. Seal the exhaust drain tube (D) that protrudes through the undercover with tape.



- 5. Seal two exhaust openings located in the valances under the rear bumper with tape (E).



6. Push the vehicle into the paint booth or the curing oven as needed and complete the painting and/or curing process.

⚠ CAUTION

A capable person **MUST** always be in the driver's seat to steer and stop the vehicle as needed. Always use wheel chocks to prevent the vehicle from rolling.

7. After completing the painting and/or curing process, push the vehicle from the paint booth or curing oven into a VOC-free area.

Use wheel chocks to secure the vehicle from rolling, then remove tape from all sealed openings.

8. Reconnect the negative cable of the 12-volt battery located in the cargo area.

***i* Information**

If the 12-volt battery is sufficiently charged, the transmission should automatically shift to **Park (P)** after the 12-volt cable is reconnected.

Start the vehicle and verify the transmission has shifted into Park (P).

9. Reinstall the cargo tray and floorboard.

Remove the wheel chocks before driving the vehicle.

10. The procedure is complete.