



HYUNDAI

Technical Service Bulletin

GROUP BODY	NUMBER 24-BD-004H
DATE MARCH 2024	MODEL(S) SANTA CRUZ (NXT)


SUBJECT: TONNEAU COVER INSPECTION, REALIGNMENT, AND ASSEMBLY REPLACEMENT

Description: This bulletin provides instructions to inspect and repair certain Santa Cruz (NXT) vehicles experiencing a condition where the tonneau cover does not retract properly and/or a V-Gap is present when closed.

Applicable Vehicles:

- 2022 – 2024MY Santa Cruz (NXT) vehicles produced from 5/26/2021 – 8/9/2023 and equipped with a tonneau cover

Parts Information:

Model	Part Name	Part Number	Figure
Santa Cruz (NXT)	Tonneau Cover Assembly	828A0-K5000QQH	

Warranty Information:

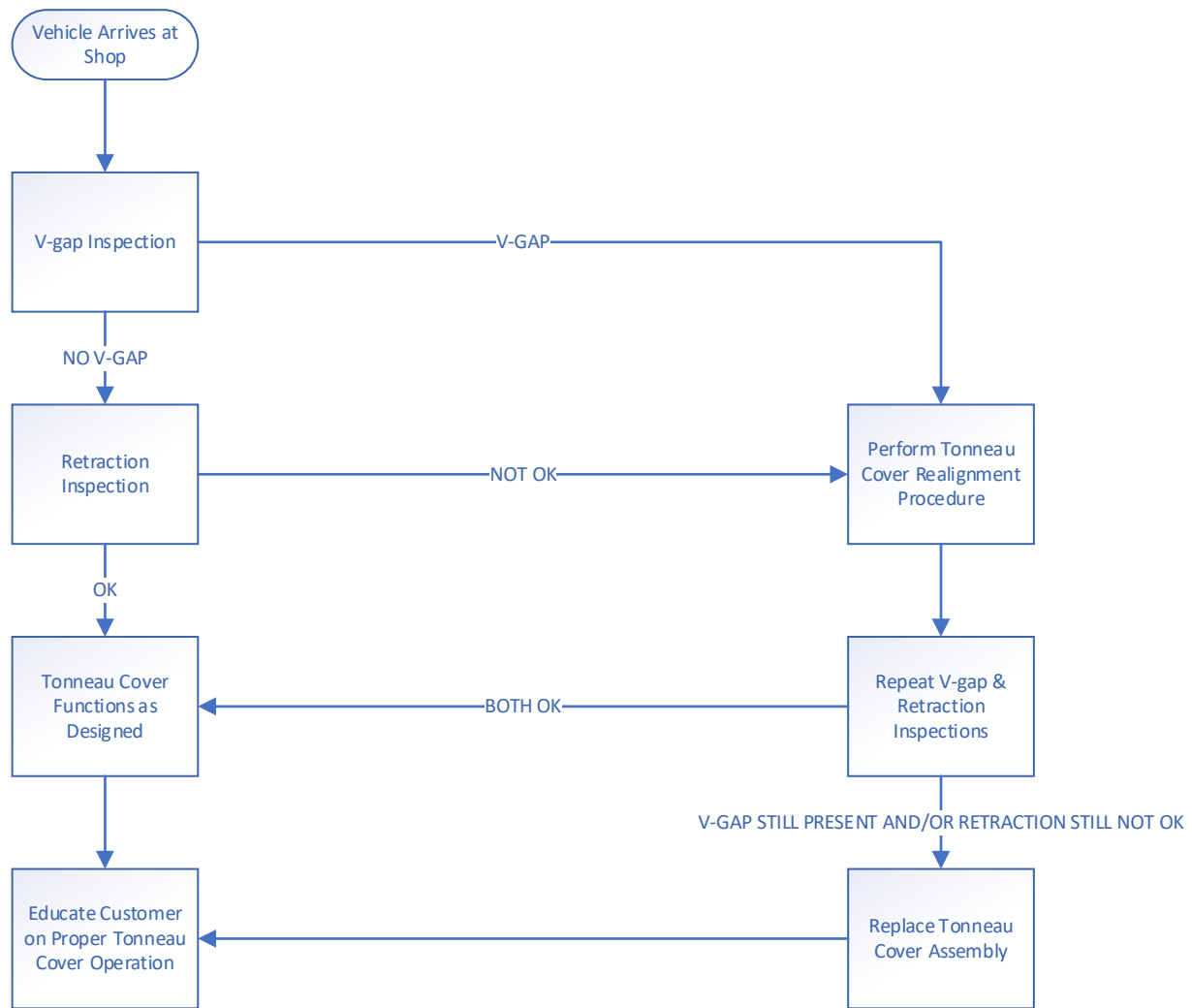
Model	Op. Code	Operation	Op. Time	Casual Part	Nature Code	Cause Code
Santa Cruz (NXT)	30DA18I0	Tonneau Cover Inspections ONLY	0.2 M/H	828C7-K5000	A35	ZZ1
	30DA18R0	Tonneau Cover Inspections and Realignment	0.3 M/H			
	30DA18R1	Tonneau Cover Inspections, Realignment, and Replacement	0.5 M/H	828C7-K5000QQH	I21	

NOTE 1: Submit claim on Claim Entry Screen as “Campaign” type.

NOTE 2: The incident parts are subject to callback through the normal Warranty Technical Center (WTC) parts return process. Claim is subject to debit if the part is not returned.

NOTE 3: If a part is found in need of replacement while performing this TSB and the affected part is still under warranty, submit a separate claim using the same repair order. If the affected part is out of warranty, submit a Prior Approval request for goodwill consideration prior to performing the work.

Service Procedure:



STUI

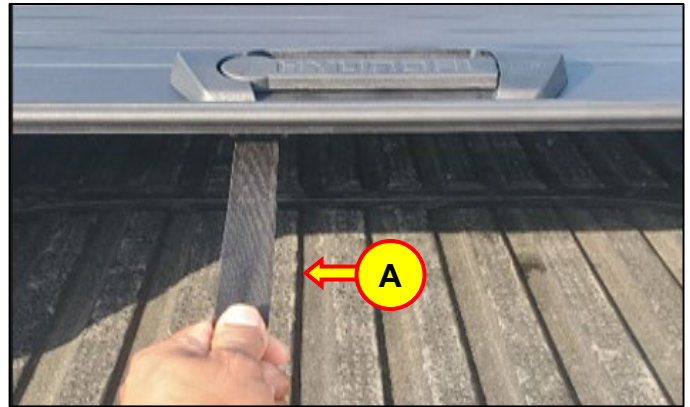


This TSB includes Repair validation photos. Refer to the latest Digital Documentation Policy for requirements.

V-Gap Inspection:

1. Open the tailgate and use the pull strap (A) to close the tonneau cover.

Ensure that the latch pins on both sides lock securely at the end of the bed rails.



2. Close the tailgate.

If no V-Gap is present, this inspection is complete. Proceed to the **Retraction Inspection** on the next page.

If a V-Gap (B) is present, perform the **Tonneau Cover Realignment** procedure on page 5.

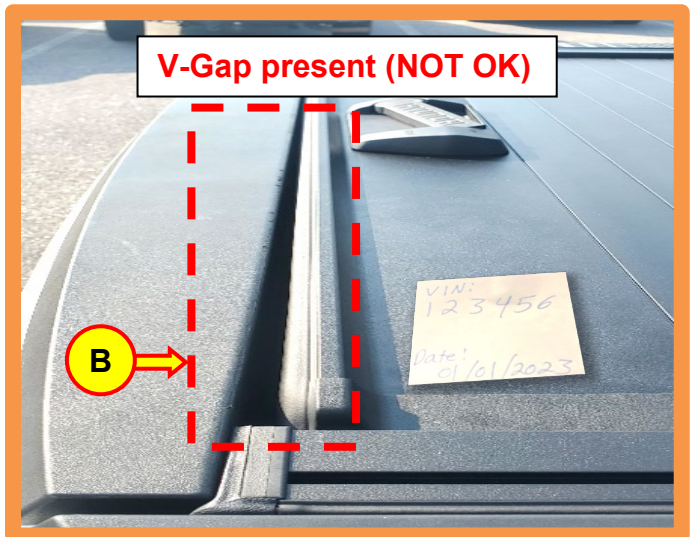


STUI



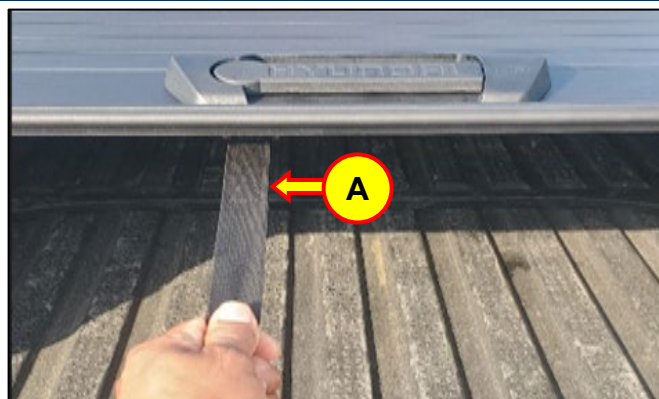
Using STUI, take a photo of the V-Gap condition (if it is present or not) with the last 6 digits of the VIN and the date of repair on a piece of paper.

Upload the photo to STUI.



Retraction Inspection

1. Open the tailgate and use the pull strap (A) to close the tonneau cover.



2. Put the tonneau cover latch (B) into the open position.



3. If the tonneau cover retracts easily or needs a gentle push to retract, this inspection is complete. No repairs are required. Proceed to the **Proper Tonneau Cover Operation** section on the last page.

If the tonneau cover does **NOT** retract or requires excessive effort while pushing to retract, perform the **Tonneau Cover Realignment** procedure on the next page.

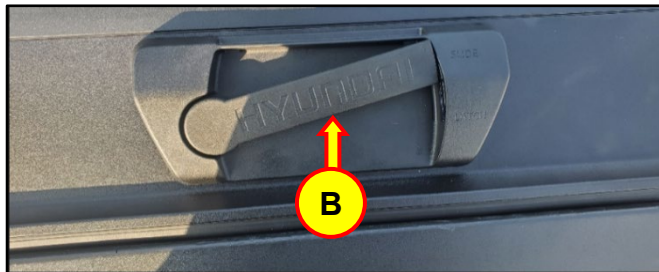


Tonneau Cover Realignment

1. Open the tailgate and use the pull strap (A) to close the tonneau cover.

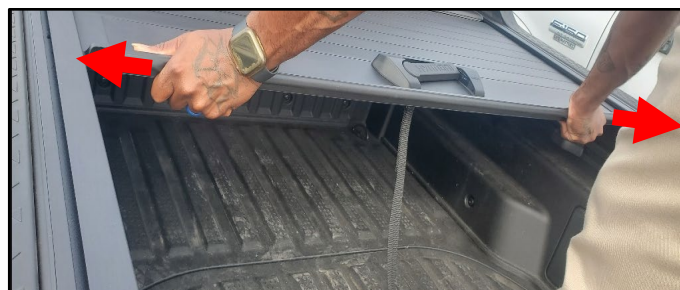


2. Put the tonneau cover latch (B) into the open position.



3. With both hands, hold the tonneau cover and shift it left to right while slowly pushing it into the canister.

Continuously shift the tonneau cover until it is completely retracted.



4. Repeat steps 1-3 twice (total of 3 times).
5. Repeat the **V-Gap Inspection** and **Retraction Inspection** from the previous pages.

If both inspections are **OK**, no further action is necessary. Proceed to the **Proper Tonneau Cover Operation** section on the next page.

If the V-Gap is still present and/or the tonneau cover is still not retracting after performing the realignment procedure, then replace the tonneau cover assembly.

Refer to the shop manual:

**SANTA CRUZ(NX4A OB) {2022-2024} >
Body (Interior and Exterior) >
Bed Lid > Bed Tonneau Cover Assembly >
Repair procedures**



Proper Tonneau Cover Operation

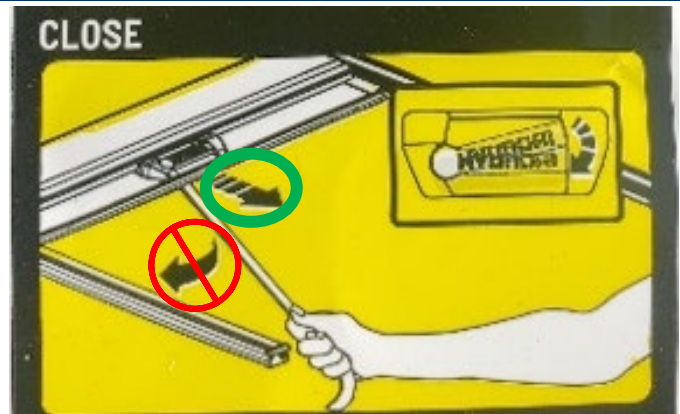
1. Inform the customer how to properly use the tonneau cover.

The tonneau cover should only be closed by pulling towards the center.

Only use the pull strap or center handle to close the tonneau cover.

Do **NOT** pull towards the sides or without using the pull strap or center handle.

Alignment/retraction problems may occur if the tonneau cover is repeatedly closed incorrectly.



NOTICE

Do **NOT** slam cover closed with excessive force, which may cause damage to the tonneau cover.

2. Secure the pull strap (A) to either side of the bed when not in use.

Pulling the strap to the left will reset the latch center handle position.

