

Manufacturer's Communication to Dealer

March 25, 2024

Dear Tiffin Motorhomes Dealer,

On certain Tiffin Motorhomes equipped with an optional overhead bunk, an additional latch should be installed to secure the bunk in the event that the owner of the motorhome does not fully engage the primary bunk latches.

Tiffin Motorhomes is allowing 0.50 hours to make this update. Please verify the motorhome is involved in this update **before** ordering parts. To verify a motorhome's involvement in this product improvement, please visit our website, TiffinMotorhomes.com. Choose the "Dealer Login" page and click on "Vehicle Recall Lookup" and enter the complete 17-digit VIN number. No login or password is needed. To view work instructions, please click on "Flat Rate Manual" and choose "Dealer Communication" for Model and "Manufacturer-Dealer Communication" for the Section, scroll down to MCD-003, click on "Show Files" and then download the work instructions.

This job repair will expire on April 30, 2026. Please make sure that this repair is completed prior to this date. Work completed after this date will be done at the customer's expense.

Thank you for your attention to this matter,

Tiffin Motorhomes

MCD-003 Repair Instructions

Models Involved: 2016 – 2023 Allegro Open Road, Allegro RED 360, Allegro RED 340, and Phaeton Motorhomes equipped with an optional overhead bunk bed.

Purpose: Provide an additional latch if the operator of the motorhome does not properly latch the primary latch.

Tools Needed:

Screw Gun or Drill
6" #2 Phillips bit
3/8" Socket or Wrench

Parts Needed:

5156428, bunk bracket 1
5156430, bunk bracket 2
Hardware kit (see list page 3)

FLAT RATE CODE & TIME ALLOWED FOR REPAIR. When filing the warranty claim for payment, please use the following flat rate code for 0.50 hrs. **AL9503DC03, RT9503DC03, RD9503DC03, PH9503DC03.** *No additional authorization is required for work completed at the flat rate times stated on the work instructions.* Use **"MCD003"** as the authorization on claim for payment.

The hardware kit can be ordered from Tiffin Motorhomes or shop supplies that are billed back as materials.

Repair Procedure:

1. Using the 6" #2 Phillips head bit, remove rear screw on bunk unit just above driver's side latch (figure 1).



Figure 1

2. Place bunk bracket 1 in position. Align the hole in the bracket with the hole the screw was removed from (figure 2a). Using the previously removed screw, secure the bunk bracket 1 to the bunk mechanism as shown in figure 2b. Make sure the bracket edge is aligned with edge of bunk mechanism.



Figure 2a



Figure 2b

3. Locate the white bucket on the driver's side of bunk (figure 3a). Secure bunk bracket 2 in position using the bolts, lock washers and nuts from the hardware kit. Bunk bracket 2 should be placed over bracket using the existing holes (figure 3b).

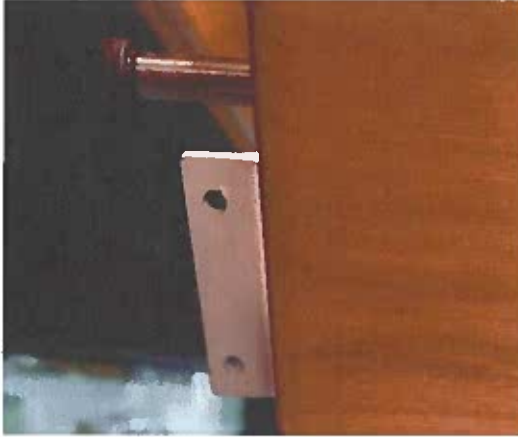


Figure 3a

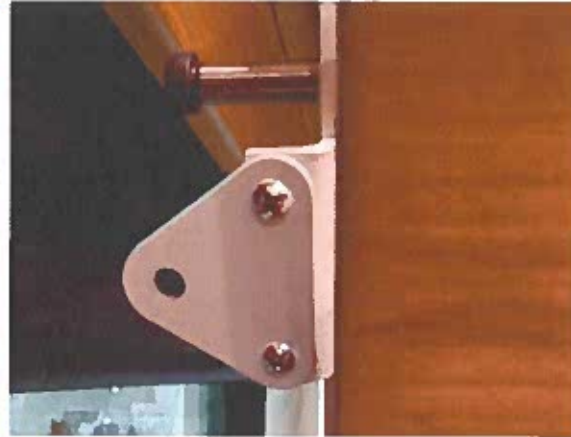


Figure 3b

4. Raise the bunk up to its top position, making sure both sides latch and that holes in bunk bracket 1 and bunk bracket 2 align (figure 4a). Place coupler pin from hardware kit through the aligned holes of the bunk bracket 1 and bunk bracket 2 (figure 4b).



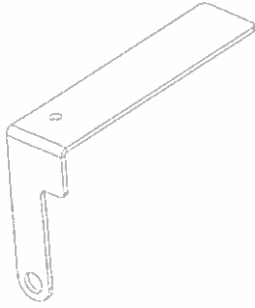
Figure 4a



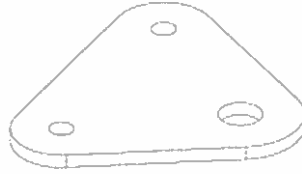
Figure 4b

Bunk Safe Latch Kit

5156428 - BRKT BUNK PIN 1 PCTD

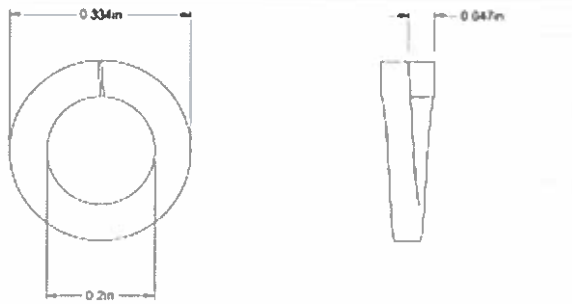


5156430 - BRKT BUNK PIN 2 PCTD

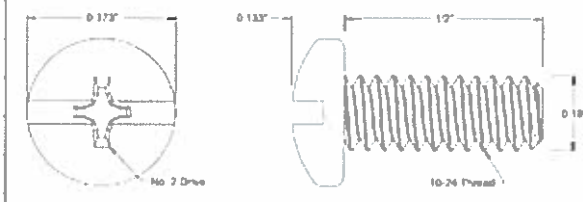


Additional Parts Needed

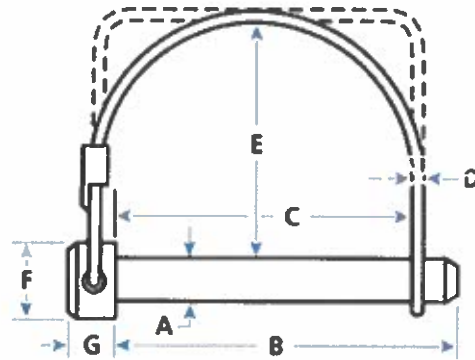
QTY - 2 18-8 STAINLESS SPLIT LOCK WASHER #10



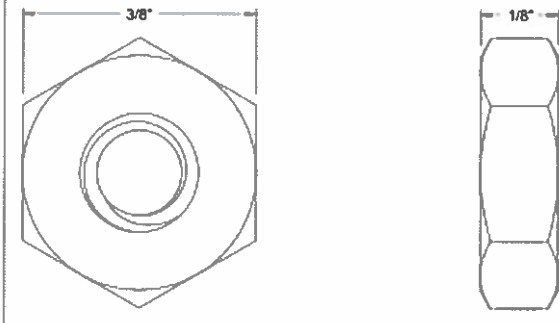
QTY - 2 10-24 STAINLESS BOLT 1/2"



QTY - 1 COUPLER PIN - MCMaster-CARR



QTY - 2 18-8 STAINLESS HEX NUT 10-24 THREAD



A - 1/4"
 B - 2" MAX
 C - 1 3/8" MAX

NOTE:

THE BRACKETS AND PIN SHOULD BE USED AS A SAFETY MEASURE ONLY - INTENDED TO CATCH THE BUNK IF LATCHES FAIL. DO NOT BEGIN TRAVEL WITHOUT DRIVER AND PASSENGER SIDE LATCHES SECURE.