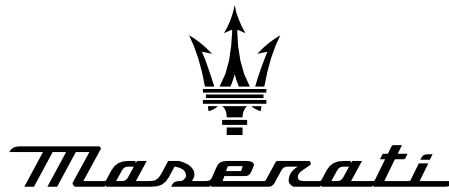


Diagnostic Sheet

FROM: Maserati TSO

TO: Maserati Network



PERSONAL SERVICE LAB

MASTERS OF CARE

MC20 Misfire or Engine Irregularities

ATTENTION! This bulletin supersedes MAS003156 BOL 22-08 released on July 28, 2022, Please discard/remove all copies of the previous bulletin.

DATE: February 27, 2024

This Diagnostic Sheet serves as a guide and provides additional diagnostic info on how to diagnose possible engine misfires or irregularities, highlighting the importance of refraining from disassembling the Central (Pre-Chamber) spark plugs unless instructed to do so.

MODELS: MC20 M240 V6 RWD and Grecale M182 V6 RWD (All MY)

ISSUE: Engine malfunctions and irregularities, e.g. misfire and irregular engine speed at idle.

DTCs in ECUs: possible DTCs in ECM:

- P13D1-00 (\$13D100) Fuse on Ion-current module bank1 broken
- P13D0-00 (\$13D000) Fuse on Ion-current module bank2 broken
- P0301-00 (\$030100) Cylinder 1 Misfire Detected
- P0306-00 (\$030600) Cylinder 6 Misfire Detected
- P0303-00 (\$030300) Cylinder 6 Misfire Detected
- P0304-00 (\$030400) Cylinder 4 Misfire Detected
- P0302-00 (\$030200) Cylinder 2 Misfire Detected
- P0305-00 (\$030500) Cylinder 5 Misfire Detected
- P0300-00 (\$030000) Multiple Cylinder Misfire
- P2F23-00 (\$2F2300) DFC for misfire detection lateral miss spark
- P2F2D-00 (\$2F2D00) DFC for misfire detection lateral miss spark
- P2F27-00 (\$2F2700) DFC for misfire detection lateral miss spark
- P2F29-00 (\$2F2900) DFC for misfire detection lateral miss spark
- P2F25-00 (\$2F2500) DFC for misfire detection lateral miss spark
- P2F2B-00 (\$2F2B00) DFC for misfire detection lateral miss spark
- P2F22-00 (\$2F2200) DFC for misfire detection prechamber miss spark
- P2F2C-00 (\$2F2C00) DFC for misfire detection prechamber miss spark
- P2F26-00 (\$2F2600) DFC for misfire detection prechamber miss spark
- P2F28-00 (\$2F2800) DFC for misfire detection prechamber miss spark
- P2F24-00 (\$2F2400) DFC for misfire detection prechamber miss spark
- P2F2A-00 (\$2F2A00) DFC for misfire detection prechamber miss spark

TROUBLESHOOTING:

1. If any of the DTCs in the section **DTCs in ECUs** are set in ECM ECU, save the ECM DTCs+Parameters in PDF format, then clear ECM DTCs.
2. Perform a Road Test at high engine loads/RPM, to verify if the anomaly can be duplicated again. Save a new ECM DTCs+Parameters Scan Report in PDF format. If any engine malfunction occurs during the Road Test, please verify the condition of the lateral spark plugs.

Note: See illustration below **Figure 1**. lateral spark plugs are highlighted with the ● symbol. Do not disassemble the central (Pre-Chamber) spark plugs, highlighted with the ● symbol.

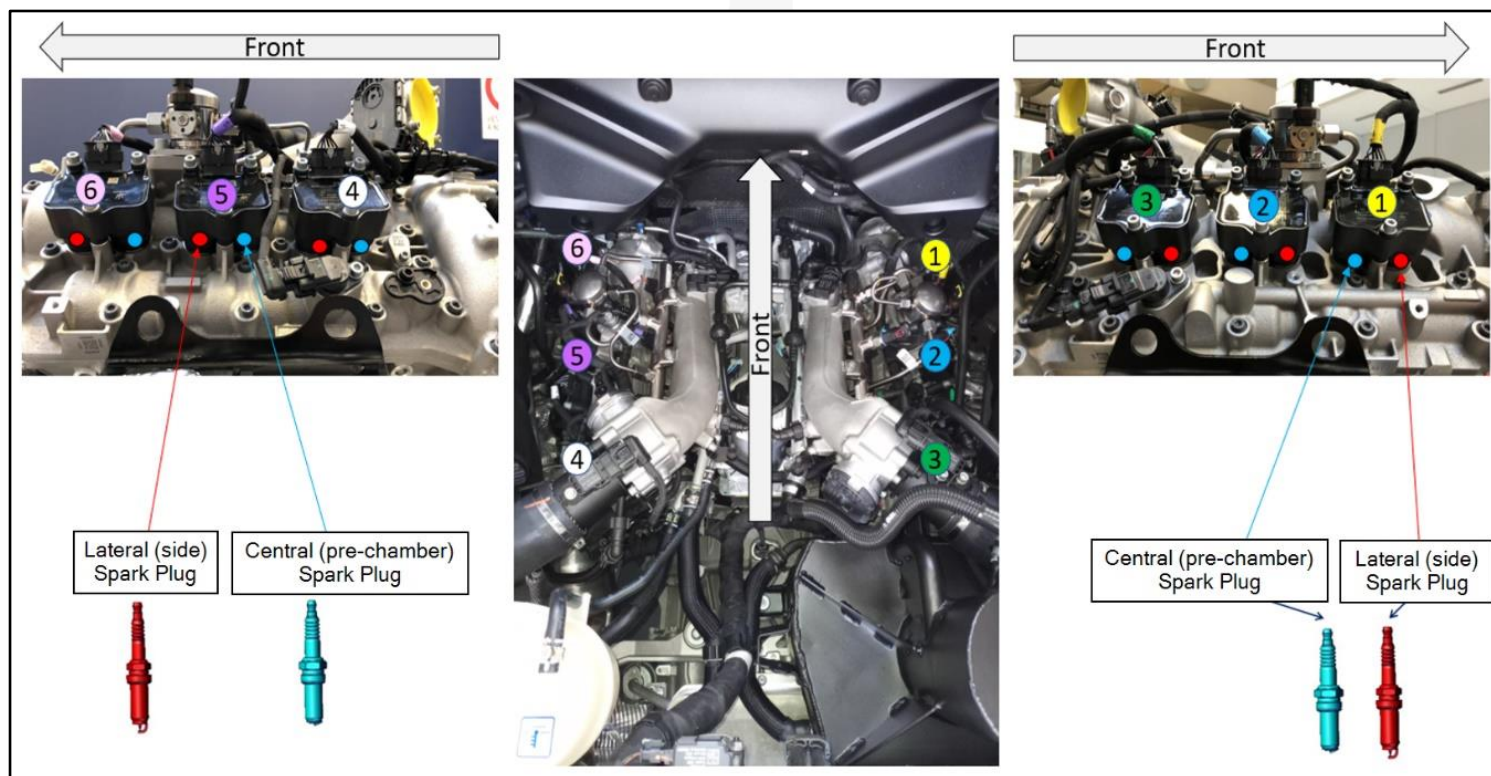


Figure 1: cylinders numbering and identification of Lateral (side) Spark Plugs vs Central (Pre-Chamber) Spark Plugs.

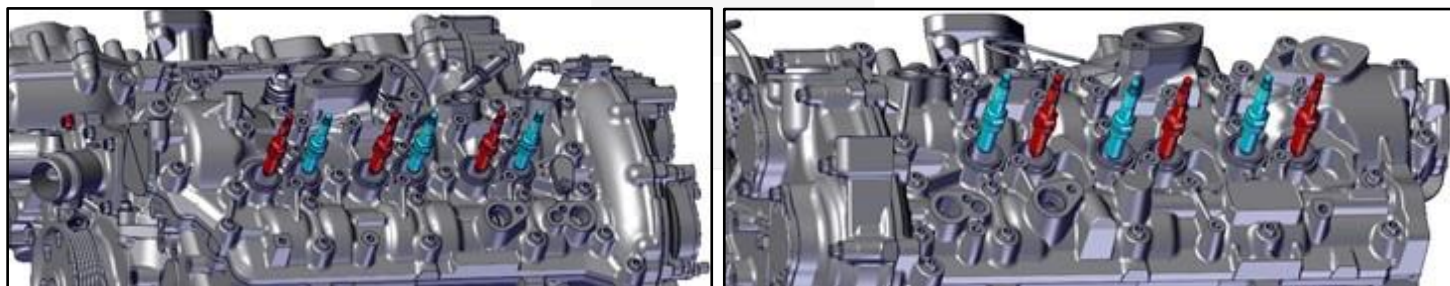


Figure 2: Below is an overview of the Left-Hand Cylinder Bank and the Right-Hand Cylinder Bank.

3. Disassemble the Lateral (side) Spark Plugs only, as described in Procedure **01.90.005-15**
4. Mark the cylinder number on the Lateral (side) Spark Plugs using an inked marker
5. Visually inspect all the Lateral (side) Spark Plugs, for fouling or breakage.
6. Take 3 detailed photos of each Spark Plug. (See examples of detailed pictures in **Figure 3** below)

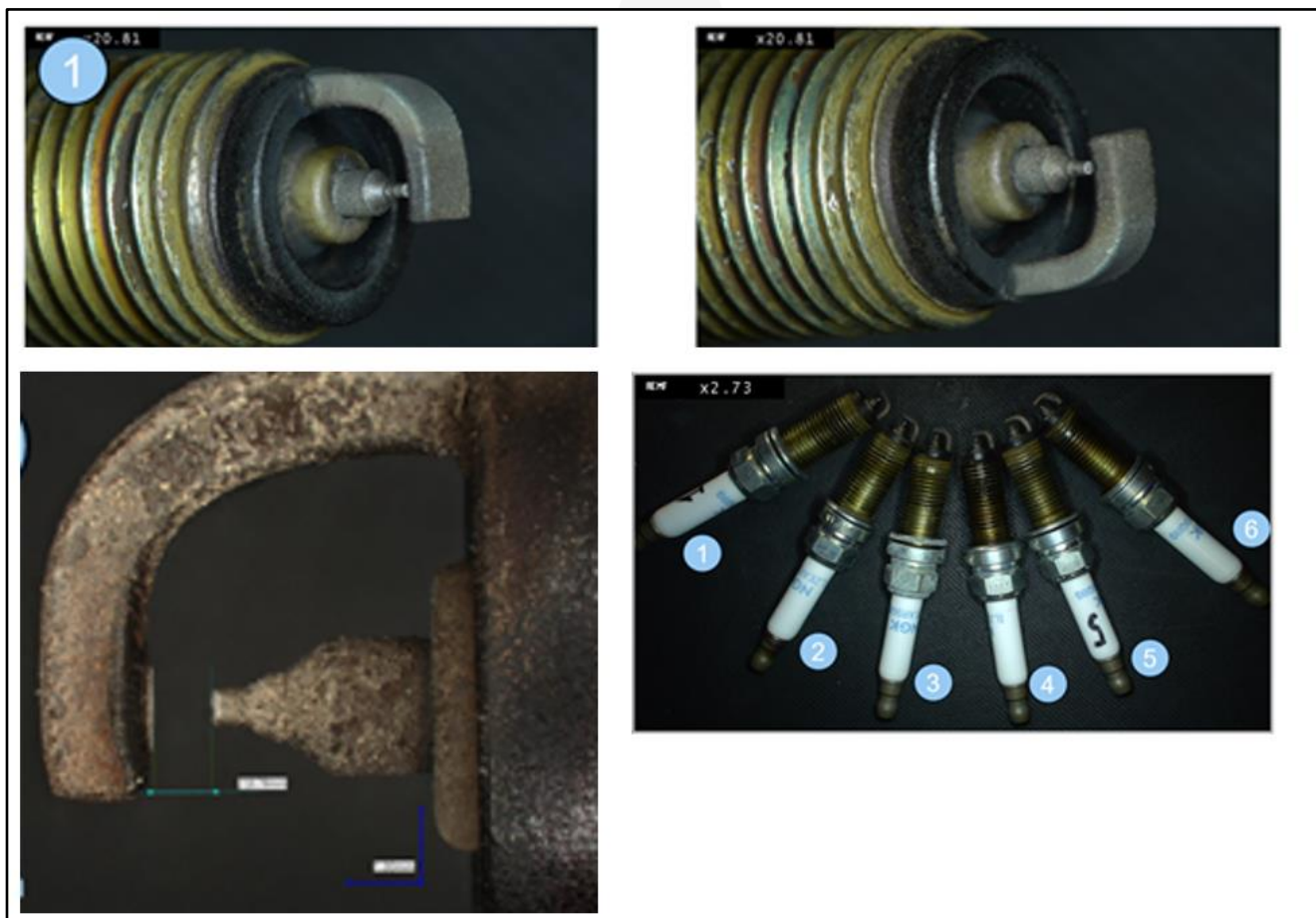


Figure 3: Examples of detailed pictures of all the Lateral Spark Plugs (bottom right) and detailed pictures (top and bottom left).

7. Open a BOL as "SUPPORT REQUEST" and attach, and report all the information collected throughout all the above checks (including all vehicle scan reports) and await further instructions.