

REFERENCE:	Nova Bus Manuals
SECTION:	12: Interior Furnishing
RS N°:	MQR 7621-2727
EFFECTIVE IN PROD.:	NA

APPLICATION DEADLINES:2025MR31
CLAIM REFERENCE NUMBER:WB5545

SUBJECT:	Driver's Barrier Glass Breaking.
JUSTIFICATION:	The Driver's Barrier stationary glass is breaking in service due to possible metal to glass contact on the lower supports. The glass must have a minimum of 3mm gap all around the supports.

LEVEL	DESCRIPTION	DIRECT CHARGES		TIME
		LABOUR	MATERIAL	
1	Install rubber isolator on bottom of both lower U channel supports	Nova Bus	Nova Bus	0.5 h
2	-	-	-	-

MATERIAL REQUIRED PER VEHICLE

QTY	PART N°	REV.	DESCRIPTION
LEVEL 1			
0.33 ft	N8951699	-	NEOPRENE SHIM 1/8" X 1/2"
LEVEL 1 SHOP SUPPLIES***			
2 ml	N97665	-	THREADLOCKER LOCTITE 243 (bottle of 50 ml)
***WHEN YOU ORDER, SPECIFY THE NUMBER OF VEHICLES TO REPAIR.			
LEVEL 2			
8	N8951758	-	Z-CLAMP SCREWS SS M5 x .8 x 15

Materials will be available within 43 days once your order has been placed.

To order, please contact novabus.parts@volvo.com

Or by phone for CANADA 1-800-771-6682, for USA 1-877-999-8808

Specify document number, quantity of parts required and shipping address.

DISPOSAL OF PARTS

REMOVED PARTS ARE:	DISCARDED *	RETAINED	* Dispose of the unused parts and the defective parts in accordance with local environmental standards in effect.
	Yes	-	

REVISION HISTORY

REV.	DATE	CHANGE DESCRIPTION	WRITTEN BY
NR	2024FE28	Initial release	Luc Carignan

APPROVED BY:

NQF772004 VERSION 3

Eric Charest

Signature numérique de Eric Charest
Date : 2024.02.28 12:08:53 -05'00'

PAGE 1 OF 6

CLIENT	ORDER	ROAD NUMBER		VIN (2NVY/4RKY...)		QTY
		FROM	TO	FROM	TO	
New York City Transit - NYCT - New York	LE84	8964	8966	L82J7N9	L82J0N9	3
New York City Transit - NYCT - New York	LE84	8968	8968	L82J9N9	L82J9N9	1
New York City Transit - NYCT - New York	LE84	8970	8970	L82J1N9	L82J1N9	1
New York City Transit - NYCT - New York	LE84	8972	8972	L82J5N9	L82J5N9	1
New York City Transit - NYCT - New York	LE84	8977	8979	L82J6P9	L82JXP9	3
New York City Transit - NYCT - New York	LE84	8983	8983	L82J4P9	L82J4P9	1
New York City Transit - NYCT - New York	LE84	8985	8985	L82J3P9	L82J3P9	1
New York City Transit - NYCT - New York	LE84	8987	9005	L82J1P9	L82J5P9	19
New York City Transit - NYCT - New York	LE84	9007	9010	L82J9P9	L82J4P9	4
New York City Transit - NYCT - New York	LE84	9012	9014	L82J1P9	L82J5P9	3
New York City Transit - NYCT - New York	LE84	9017	9017	L82J0P9	L82J0P9	1
New York City Transit - NYCT - New York	LE84	9019	9020	L82J9P9	L82J0P9	2
New York City Transit - NYCT - New York	LE84	9022	9022	L82J4P9	L82J4P9	1
New York City Transit - NYCT - New York	LE84	9024	9025	L82J8P9	L82JXP9	2
New York City Transit - NYCT - New York	LE84	9028	9031	L82J6P9	L82J6P9	4
New York City Transit - NYCT - New York	LE84	9033	9046	L82J7P9	L82J5P9	14
New York City Transit - NYCT - New York	LE84	9048	9048	L82J6P9	L82J6P9	1
New York City Transit - NYCT - New York	LE84	9051	9052	L82J6P9	L82J8P9	2
New York City Transit - NYCT - New York	LE84	9060	9061	L82J6P9	L82J8P9	2
New York City Transit - NYCT - New York	LE84	9063	9064	L82J1P9	L82J4P9	2
New York City Transit - NYCT - New York	LE84	9067	9067	L82J0P9	L82J0P9	1
New York City Transit - NYCT - New York	LE84	9070	9070	L82J1P9	L82J1P9	1
New York City Transit - NYCT - New York	LE84	9080	9080	L82J2P9	L82J2P9	1

**WARNING**

FOLLOW YOUR INTERNAL SAFETY PROCEDURES.

PROCEDURE

- 1.1. Park the vehicle on an even surface with the transmission on neutral.
- 1.2. Apply the parking brake and set the master control switch to the **stop** position.
- 1.3. Set the battery disconnect switch in the battery compartment to the **off** position.
- 1.4. Loosen the 7 Driver's barrier stationary glass support clamp all around.
 - a. To disassemble the clamp first loosen the 2.5 mm, then loosen the 3 mm screws. See Figure 1.

**NOTE**

When loosening the glass support clamps be careful not to damage the fastener. Don't loosen the fastener too much and let the glass fall.

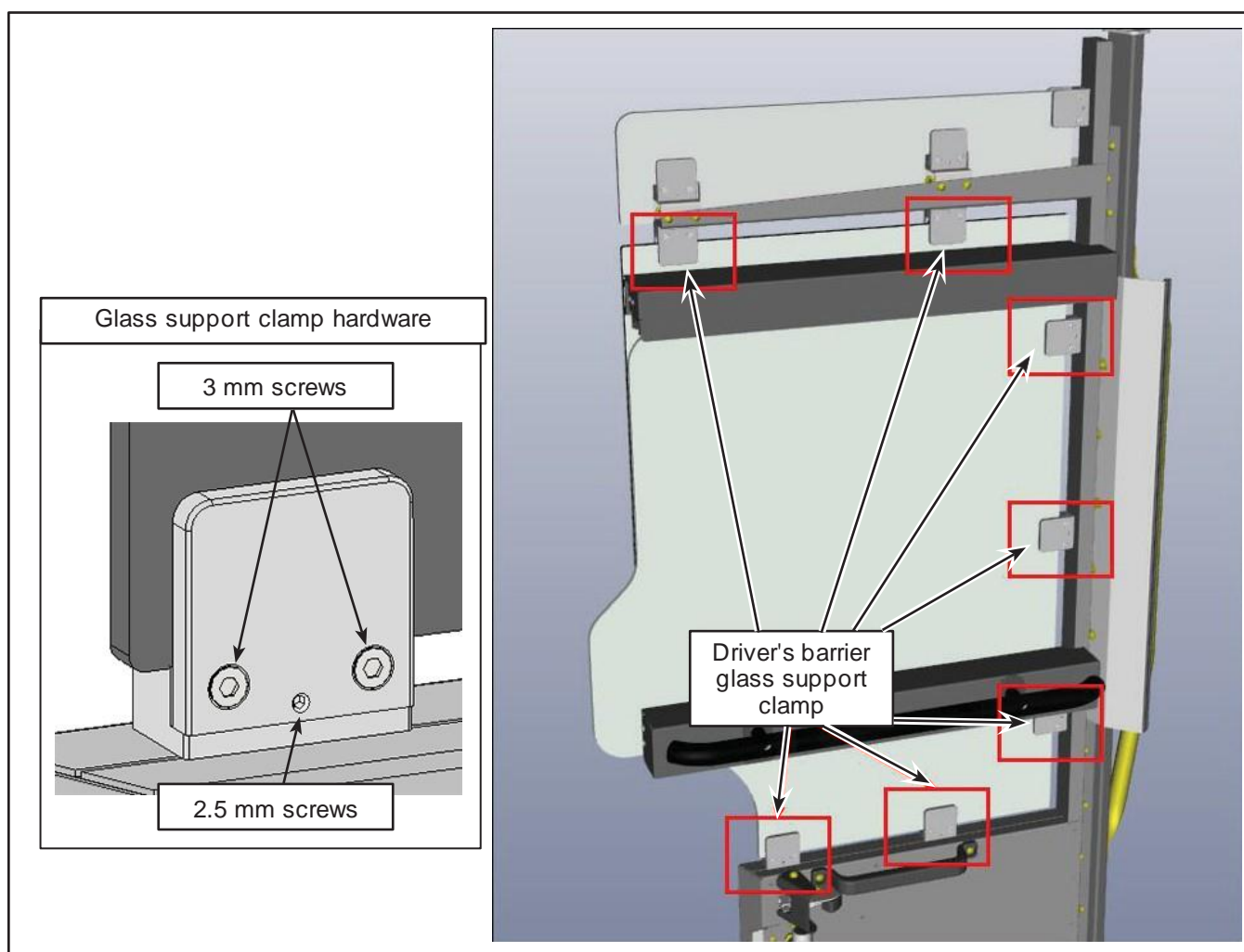


Figure 1 - Loosen the Glass Support

- 1.5. Remove the two bottom supports.



Figure 2 - Removal of Bottom Supports

- 1.6. Carefully pry up the glass and insert a 2 inch x 1/8" thick piece of rubber N8951699 on the two bottom support between the glass. Release the glass.

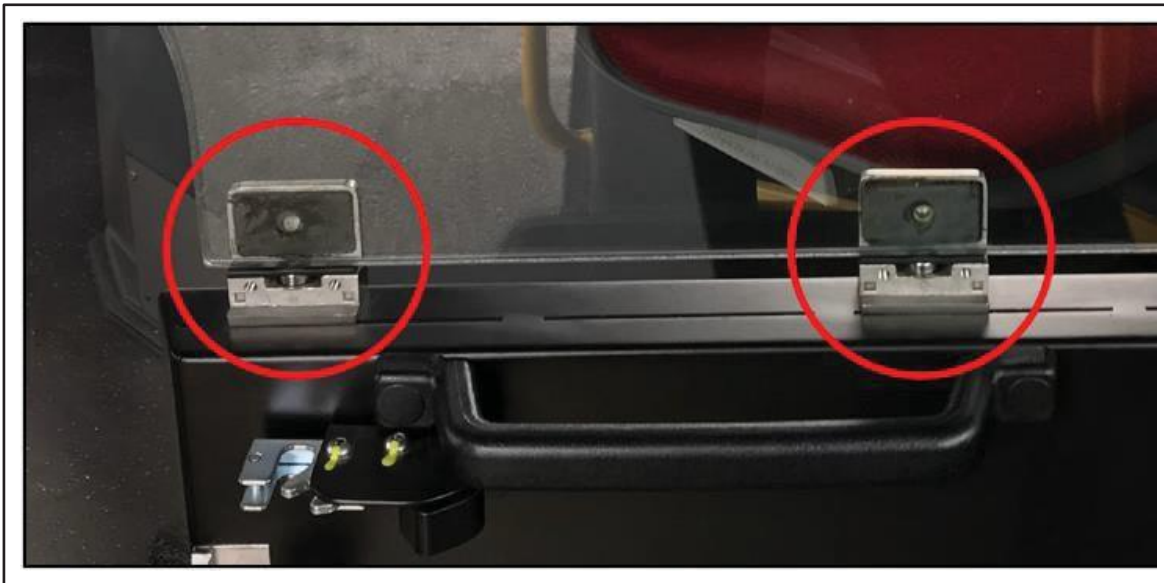


Figure 3 - Installation of Rubber Shim on the Bottom Support

- 1.7. Use a 1/8" thick piece of rubber to ensure the side mounts have the 3 mm gap. Remove the support plates as required to ensure the glass is held securely.



Figure 4 - Ensure 3 mm Gap on Side mounts

- 1.8. For clamp reassembly follow these steps;
 - a. Add blue loctite to the 3 mm screws.
 - b. Install the cover plate and secure with the screws but do not tighten them all the way.
 - c. Tighten the 2.5 mm Allen screws until the cover plate is slightly angled. See Figure 5.
 - d. Torque the 3.5 mm screws. See Figure 5 for torque value

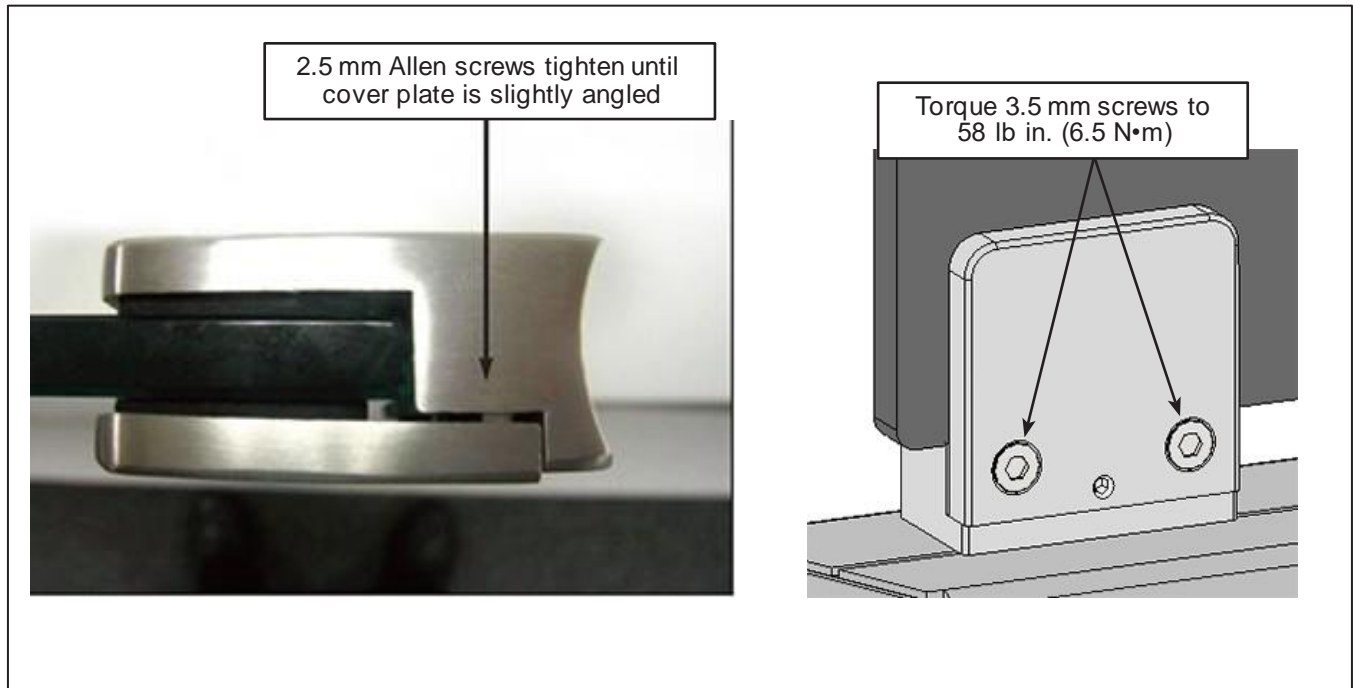


Figure 5 - Clamp Reassembly and 3.5 mm Screws Torque

- 1.9. Replace screws if required using level 2 parts.
- 1.10. The vehicle may return in service.❖