

Subject: POWER SEAT TILT SWITCH DOES NOT RETURN TO ORIGINAL POSITION AND/OR ABNORMAL NOISE OCCURS WHEN OPERATING	Bulletin No.: 09-008/24
	Last Issued : 02/02/2024

BULLETIN NOTES

APPLICABLE MODEL(S)/VINS

2024 CX-90 with VINS lower than JM3KK*****147995 (produced before November 2, 2023)

DESCRIPTION

Some vehicles may exhibit that the tilt switch knob on the power seat does not return to its original position after operating it and/or a stick-slip noise may occur when operating the power seat tilt switch. This may be caused by the frictional resistance of the tilt switch knob increasing in a low-temperature environment. To eliminate this concern, a solid film lubricant has been applied to the switch knob to reduce the friction.

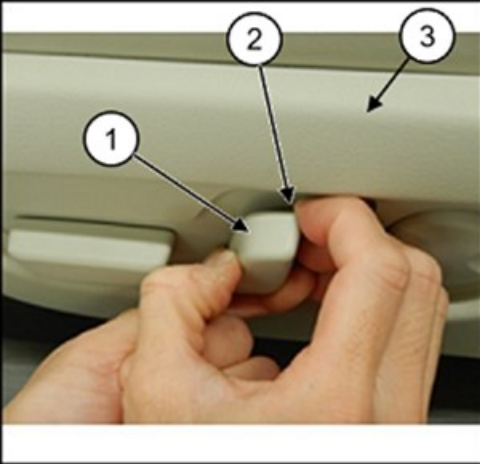
REPAIR PROCEDURE

1. Verify the customer concern.
2. Replace the tilt switch knob(s) with a modified one(s) according to following steps.
 - a. Hold the tilt switch knob (1) with one hand and support the bottom of the knob with the other hand.



CONSUMER NOTICE: The information and instructions in this bulletin are intended for use by skilled technicians. Mazda technicians utilize the proper tools/ equipment and take training to correctly and safely maintain Mazda vehicles. These instructions should not be performed by "do-it-yourselfers." Customers should not assume this bulletin applies to their vehicle or that their vehicle will develop the described concern. To determine if the information applies, customers should contact their nearest authorized Mazda dealership. Mazda North American Operations reserves the right to alter the specifications and contents of this bulletin without obligation or advance notice. All rights reserved. No part of this bulletin may be reproduced in any form or by any means, electronic or mechanical---including photocopying and recording and the use of any kind of information storage and retrieval system ---without permission in writing.

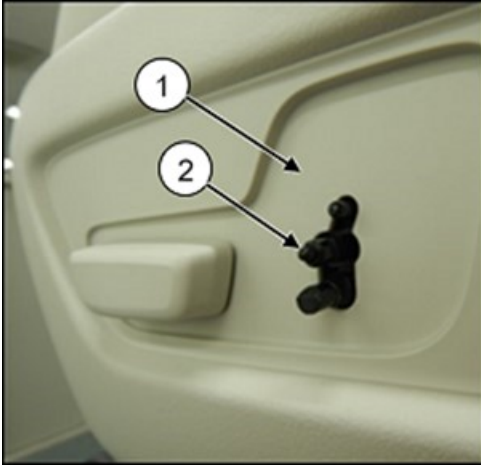
b. While pulling the switch knob (1) upward, insert a finger into the gap (2) between the top of the knob and the side cover (3) of the power seat.



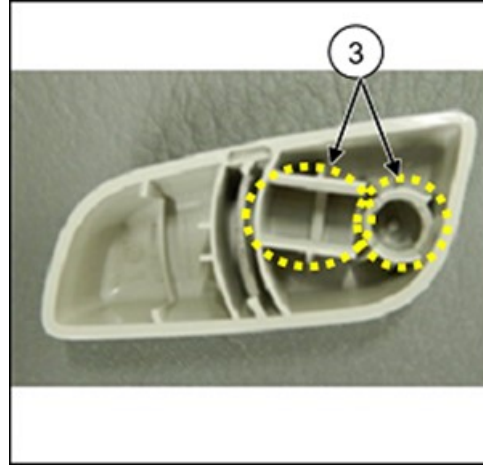
c. While keeping the finger in the gap, pull up the top of the knob, and then remove it.



CONSUMER NOTICE: The information and instructions in this bulletin are intended for use by skilled technicians. Mazda technicians utilize the proper tools/ equipment and take training to correctly and safely maintain Mazda vehicles. These instructions should not be performed by "do-it-yourselfers." Customers should not assume this bulletin applies to their vehicle or that their vehicle will develop the described concern. To determine if the information applies, customers should contact their nearest authorized Mazda dealership. Mazda North American Operations reserves the right to alter the specifications and contents of this bulletin without obligation or advance notice. All rights reserved. No part of this bulletin may be reproduced in any form or by any means, electronic or mechanical---including photocopying and recording and the use of any kind of information storage and retrieval system ---without permission in writing.



(1) Side Cover
(2) Power Seat Switch



Inside of the tilt switch knob
(3) Engaging holes of the power seat switch

d. Take the new switch knob and insert the engaging hole of the handle to match the protrusions on the switch.



CONSUMER NOTICE: The information and instructions in this bulletin are intended for use by skilled technicians. Mazda technicians utilize the proper tools/ equipment and take training to correctly and safely maintain Mazda vehicles. These instructions should not be performed by "do-it-yourselfers." Customers should not assume this bulletin applies to their vehicle or that their vehicle will develop the described concern. To determine if the information applies, customers should contact their nearest authorized Mazda dealership. Mazda North American Operations reserves the right to alter the specifications and contents of this bulletin without obligation or advance notice. All rights reserved. No part of this bulletin may be reproduced in any form or by any means, electronic or mechanical---including photocopying and recording and the use of any kind of information storage and retrieval system ---without permission in writing.

e. After installing the tilt switch knob, press the underside of the knob with a finger until it clicks.



3. Verify the repair by operating the tilt switch knob to confirm it returns to its original position and abnormal noise and rubbing is no longer present.



CONSUMER NOTICE: The information and instructions in this bulletin are intended for use by skilled technicians. Mazda technicians utilize the proper tools/ equipment and take training to correctly and safely maintain Mazda vehicles. These instructions should not be performed by "do-it-yourselfers." Customers should not assume this bulletin applies to their vehicle or that their vehicle will develop the described concern. To determine if the information applies, customers should contact their nearest authorized Mazda dealership. Mazda North American Operations reserves the right to alter the specifications and contents of this bulletin without obligation or advance notice. All rights reserved. No part of this bulletin may be reproduced in any form or by any means, electronic or mechanical---including photocopying and recording and the use of any kind of information storage and retrieval system ---without permission in writing.

PARTS INFORMATION

Parts Number	Description	Qty.	Notes
KSR7-88-1H5 02	Knob (L), Knuckle	1	Black
KSR7-88-1H5 39	Knob (L), Knuckle	1	Pure White
KSR7-88-1G5 02	Knob (R), Knuckle	1	Black
KSR7-88-1G5 39	Knob (R), Knuckle	1	Pure White

NOTE: The part numbers have not been changed for the modification. All of the service parts in stock (MC) are modified ones.

WARRANTY INFORMATION**NOTE:**

- This warranty information applies only to verified customer complaints on vehicles eligible for warranty repair.
- This repair will be covered under Mazda's New Vehicle Limited Warranty term.
- Additional diagnostic time cannot be claimed for this repair.

Warranty Type	A
Symptom Code	90
Damage Code	9H
Part Number Main Cause	****-88-1H5 ** or ****-88-1G5 **
Quantity	1
Operation Number / Labor Hours:	XXWBEARX / 0.2 Hrs. (One side) XXWBEBRX / 0.3 Hrs. (Both sides)

CONSUMER NOTICE: The information and instructions in this bulletin are intended for use by skilled technicians. Mazda technicians utilize the proper tools/ equipment and take training to correctly and safely maintain Mazda vehicles. These instructions should not be performed by "do-it-yourselfers." Customers should not assume this bulletin applies to their vehicle or that their vehicle will develop the described concern. To determine if the information applies, customers should contact their nearest authorized Mazda dealership. Mazda North American Operations reserves the right to alter the specifications and contents of this bulletin without obligation or advance notice. All rights reserved. No part of this bulletin may be reproduced in any form or by any means, electronic or mechanical---including photocopying and recording and the use of any kind of information storage and retrieval system ---without permission in writing.