



SIB 11 07 23

2024-02-22

**VOLUNTARY EMISSION RECALL 23E-A05: REPLACE SWITCHABLE  
ROCKER ARM**

This Service Information Bulletin (Revision 5) replaces SI B11 07 23 **dated November 2023**.

|                          |                                |
|--------------------------|--------------------------------|
| <input type="checkbox"/> | THIS REPAIR IS MOBILE FRIENDLY |
|--------------------------|--------------------------------|

Please perform the procedure outlined in this Service Information on all affected vehicles before customer delivery. In the event the customer has already taken delivery of the vehicle, please perform the procedure the next time the vehicle is in the shop.

**What's New:**

- Procedure updated to exclusively use the repair instructions in ISTA or AIR
- Parts list updated to include VANOS central bolt

**MODEL**

| E-Series | Model Description          | Production Date                |
|----------|----------------------------|--------------------------------|
| G05      | X5 Sports Activity Vehicle | May 8, 2023 – June 17, 2023    |
| G06      | X6 Sports Activity Coupe   | May 8, 2023 – June 17, 2023    |
| G07      | X7 Sports Activity Vehicle | May 9, 2023 – June 14, 2023    |
| G70      | 7 Series Sedan             | April 19, 2023 – June 20, 2023 |

**AFFECTED VEHICLES**

- Vehicles which require this campaign to be completed will show it as “Open” when checked either in AIR, AWP, Campaign Summary, or Warranty Vehicle Inquiry.
- Please make sure you check your dealer inventory as soon as possible. You can see a list of affected vehicles in Inventory Campaign Details (ICD) under ROSS.

**SITUATION**

The return springs on the exhaust camshaft followers may break.

**PROCEDURE**

Read this entire Bulletin before starting any repairs.

Check the vehicle history for engine or cylinder head replacement. If the engine or cylinder has been replaced, then the campaign can be cleared. Refer to the Claim Information section.

If the vehicle history does not show any of the above repairs, replace the exhaust camshaft followers. Refer to Repair Instruction 11 33 055 “Remove and install/replace switchable cam follower on the exhaust side.”

**IMPORTANT:** The Repair Instruction 11 33 055 currently states to remove both intake and exhaust VANOS central bolts. It is not necessary to remove and replace the intake VANOS central bolt, only remove and replace the exhaust VANOS central bolt.

**If any broken or missing parts are identified in the valvetrain, please create a TSARA TC case before continuing with this bulletin.**

**Important ISTA Repair Instruction Supplements:**

1. When removing the ignition coils and the fuel injectors from the engine, number them with the cylinder in which they came from and reinstall them back in the same location.

2. Before reinstalling the cylinder head cover, check the camshaft timing using the applicable tools and repair instructions.

The crankshaft must be pinned/locked with special tool 2 288 380.

Both camshaft adjusters (VANOS gears) must be locked with special tool 5 A53 587.

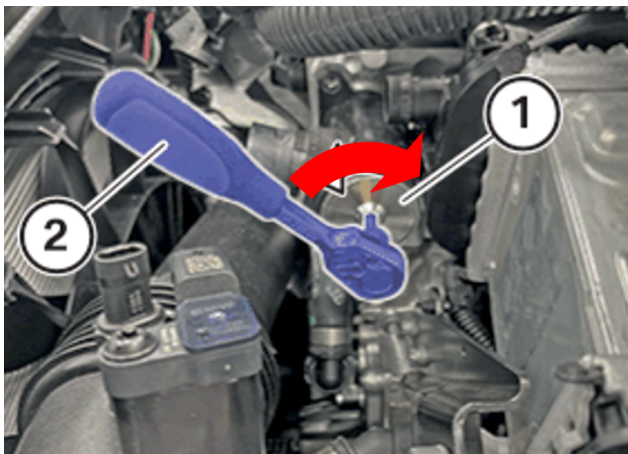
The timing chain must be pretensioned using special tool 2 455 654 to ensure the timing chain is installed correctly. Refer to Repair Instruction 11 31 005 "Adjusting the timing of the camshafts", see step 8. This center button the special tool will identify if the chain is correctly tensioned, over-slackened or over-tensioned.

Check the camshaft position using the test gauge special tool 5 A7A 5B9 and basic carrier special tool 5 A4D A16.

**If the cylinder head cover gasket is not damaged, it can be reused.**

**If the high pressure pump gasket is not damaged, it can be reused.**

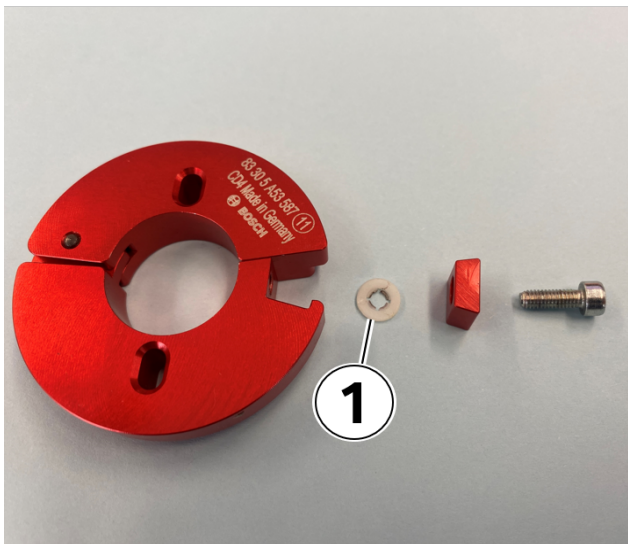
Repair and Tool Hints:



Cylinder 1 intermediate lever may interfere when trying to install the intake camshaft timing tools.

Place the VVT motor in minimum lift before installing the camshaft timing tools.

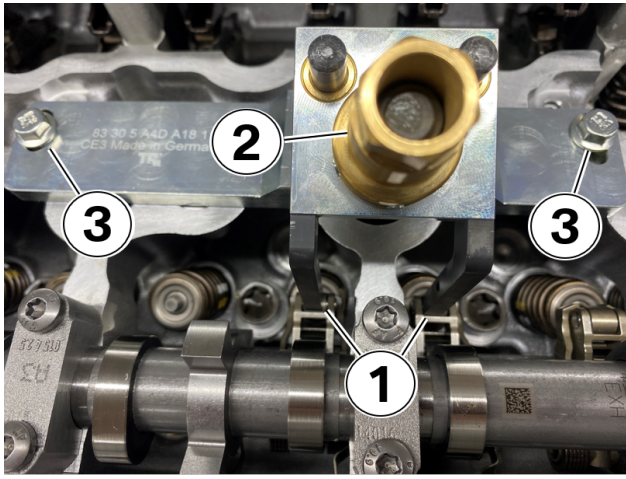
Use a 4 mm Allen socket (1) and a ratchet (2) to turn the VVT motor clockwise until it stops at the minimum lift end stop.



Tool 83 30 5 A53 587 may bind when removing it from both of the VANOS adjusters, the plastic washer (1) may be binding the tool and will not allow it to collapse when the screw is loosened.

Using a fine metal file, reduce the outside diameter of the plastic washer by approximately 1 mm to avoid this interference.

Removing the washer entirely could result in the screw and wedge falling into the engine, the washer avoids loosening the screw too much.



Special tool 83 30 5 A4D A18 must aligned properly with the rollers (1).

Turn the brass nut (2) to make contact with the rollers.

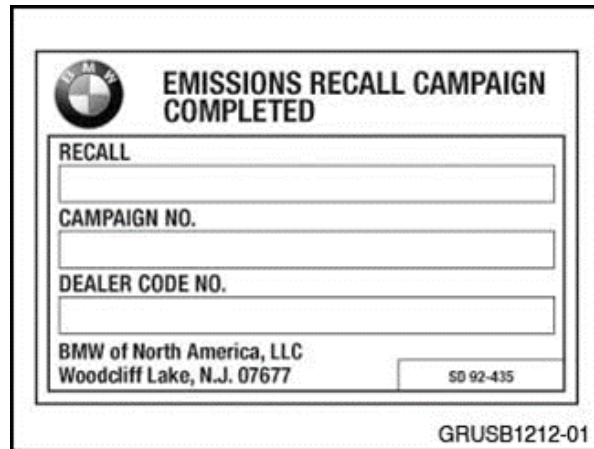
Tighten the screws on the base plate of the tool (3).

Finish compressing the springs with the brass nut (2).

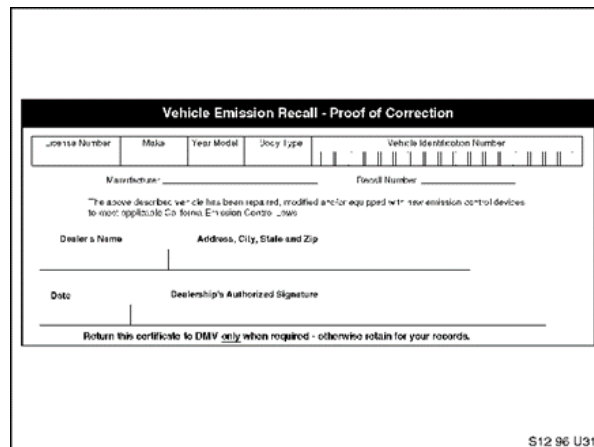
The tool must remain installed during the entire camshaft removal and installation procedure.

### LABEL INSTRUCTIONS

After the vehicle has been checked and corrected, obtain a label (SD 92-435) and with the indelible marker provided, legibly print the Recall name, recall number, and dealer code (5 digits) on the "Emissions Recall Campaign Completed Label" (see illustration). Peel the label from its backing and affix it to the right (passenger) rear side of the hood in the engine compartment, close to windshield.



For California centers only: It is required by the California Code of Regulations that an executed orange "Vehicle Emission Recall - Proof of Correction" certificate (SD92-084, see illustration) be provided to each customer (for vehicles registered in the state of California), once the Recall on his or her vehicle has been completed.



## PARTS INFORMATION

Refer to the Parts Matrix for the most up to date ordering information.

Use and invoice the applicable part numbers listed below.

Only one VANOS central bolt is required.

### G05, G06 and G07 Parts List:

| Part Number     | Description                  | Quantity                   |
|-----------------|------------------------------|----------------------------|
| 11 33 9 452 677 | Switchable rocker arm        | 12                         |
| 11 36 9 452 251 | VANOS central bolt           | 1                          |
| 11 31 9 845 293 | Sealing sleeve               | 1                          |
| 13 53 8 661 716 | Hexagon bolt                 | 12                         |
| 13 53 8 661 715 | Hexagon bolt                 | 8                          |
| 11 12 9 847 198 | Profile seal                 | 1                          |
| 13 51 7 632 572 | Torx socket with washer      | 2                          |
| 07 11 9 909 926 | O-ring                       | 1                          |
| 13 53 9 847 174 | Sealing ring                 | 6                          |
| 18 30 9 909 376 | Hexagon bolt                 | 2                          |
| 11 12 1 023 249 | Cylinder head cover seal set | <b>1 (only if damaged)</b> |

### G70 Parts List:

Only one VANOS central bolt is required.

| Part Number     | Description                  | Quantity                   |
|-----------------|------------------------------|----------------------------|
| 11 33 9 452 677 | Switchable rocker arm        | 12                         |
| 11 36 9 452 251 | VANOS central bolt           | 1                          |
| 11 31 9 845 293 | Sealing sleeve               | 1                          |
| 13 53 9 847 174 | Sealing ring                 | 6                          |
| 13 53 8 661 716 | Hexagon bolt                 | 12                         |
| 13 53 8 661 715 | Hexagon bolt                 | 8                          |
| 11 12 9 847 198 | Profile seal                 | 1                          |
| 13 51 7 632 572 | Torx socket with washer      | 2                          |
| 07 14 9 390 155 | Hexagon screw with washer    | 2                          |
| 07 14 5 A67 B87 | Hexagon nut                  | 1                          |
| 07 11 9 906 089 | Collar nut                   | 4                          |
| 07 14 7 483 888 | Hexagon bolt                 | 4                          |
| 07 14 7 283 812 | Speed nut                    | 8                          |
| 07 14 8 837 399 | ASA bolt                     | 4                          |
| 31 11 6 899 302 | Multi-purpose bolt           | 12                         |
| 07 14 9 231 837 | Hexagon screw with washer    | 4                          |
| 11 12 1 023 249 | Cylinder head cover seal set | <b>1 (only if damaged)</b> |

Additionally, other materials and small parts that are not specified above, such as fluids, lubricants, one-time use screws, nuts, and seals, which must be replaced or installed according to the ISTA repair instructions/ETK, must be selected from the Electronic Parts Catalog, or other approved BMW resources, according to the respective vehicle type. Invoiced these items separately under the Repair Code listed in this bulletin.

Refer to [SI B10 02 15](#) for label ordering information.

Copyright ©2024 BMW of North America, Inc.

| Part Number     | Description   | Quantity |
|-----------------|---|----------|
| 01 00 2 411 755 | Generic Emissions Recall Label (92-435/ Roll of 50)       | 1        |
| Or:             |   |          |
| 01 00 2 411 754 | Emissions Recall/Proof of Correction (92-084/ Pad of 100) | 1        |

## CLAIM INFORMATION

Reimbursement for this Action will be via normal claim entry utilizing the applicable work package information below, and when applicable, the part numbers listed above that apply.

|                         |  |
|-------------------------|--|
| <b>Plusposition (+)</b> | Completion before the first vehicle delivery to a customer or the vehicle is already in the workshop                                       |
| <b>Main work</b>        | The vehicle arrives at your center and this Action shows open (No other Main work will be performed or claimed during this workshop visit) |

|                     |                   |  |
|---------------------|-------------------|--|
| <b>Repair Code:</b> | <b>0011460700</b> | <b>G0x G70 Replacing switchable rocker arm exhaust</b> |
|---------------------|-------------------|--|

Below are the special flat rate labor operation code choices for this action.

### Completion before the first vehicle delivery to a customer or the vehicle is already in the workshop

| Work Pkg | Labor Operation | Description (Plusposition work)   | Labor Allowance |
|----------|-----------------|---|-----------------|
| # 1      | 00 74 988       | Replace exhaust switchable rocker arm   | As applicable   |
| Or:      |                 |   |                 |
| # 2      | 00 75 594       | Checking the vehicle claim history (WVI), this issue was addressed through a prior repair | 1 FRU           |

### The vehicle arrives at your center and this Emission Recall shows open (No other Main work will be performed or claimed during this workshop visit)

| Work Pkg | Labor Operation | Description (Main work)   | Labor Allowance |
|----------|-----------------|---|-----------------|
| # 3      | 00 74 342       | Replace exhaust switchable rocker arm   | As applicable   |
| Or:      |                 |   |                 |
| # 4      | 00 75 073       | Checking the vehicle claim history (WVI), this issue was addressed through a prior repair | 1 FRU           |

Only one Main work flat rate labor operation code can be claimed per workshop visit.

### Claim Repair Comments

Only reference the SIB number and the work package (Pkg) number performed in the technician's RO notes and in the claim comments section (For example: B11 07 23 WP 1), unless otherwise required by State law.

If this issue was addressed through a prior repair, please identify the prior repair information (RO/claim, date, and mileage) in the claim comments section.

### Sublet – Bulk Materials (RO and Claim Comments Required)

|                                |               |  |
|--------------------------------|---------------|--|
| <b>Sublet Code</b><br><b>4</b> | Up to \$50.00 | Reimbursement for the repair-related bulk materials (Do not use the BMW part numbers for claim submission) |
|--------------------------------|---------------|--|

Sublet reimbursement calculation for claiming the applicable repair-related bulk materials (BMW part numbers) is at the dealer net price amount for the proportional quantities used plus your center's handling.

Copyright ©2024 BMW of North America, Inc.

Enter this material cost in sublet and itemize the amount on the repair order and in claim comment section.

### **BMW Group's AIR Application Resource for Flat Rate Labor Operation Codes**

To obtain the corresponding flat rate unit (FRU) allowance information from the BMW Group AIR application resource, start by entering the Chassis Number (the last seven (7) characters of the VIN, select the applicable Model if two or more vehicle choices show), or enter the full VIN (17 characters), click on the "Search" button. Next, click on the "Flat Rate Units" button and enter the flat rate labor operation code in the field to the right, click "Search" to display the Flat Rate Unit Group detail choices.

### **Consequential Repair (RO and Claim Comments Required)**

When additional or other replacement work, and/or parts (cylinder head or engine assembly) are required as a direct result of addressing the issue outlined in this Service Information bulletin, claim these items under the special Repair Code listed above together with the corresponding labor operation codes, including the diagnosis that applies.

Please explain the reason for this consequential repair work (the why and the what) on the repair order and in the claim comments section.

### **Alternative Mobility Solution (AMS) for Vehicle Owners (RO and Claim Comments Required)**

This Action repair qualifies for Alternative Mobility Solution (AMS) expense reimbursement, claim this item under the Defect Code noted above as follows:

- Sublet Code 2 - Itemize the AMS sublet amount on the repair order and in the claim comment section.

Please refer to [SI B01 29 16](#) for additional information.

### **FEEDBACK REGARDING THIS BULLETIN**

|                    |   |
|--------------------|---|
| Technical Feedback | To submit feedback for the technical topic of this bulletin: Submit your feedback in the rating box at the top of this bulletin   |
| Warranty Feedback  | To submit feedback for the CLAIMS section of this bulletin: Submit an IDS ticket to the Warranty Department, or use the chat available in the Warranty Documentation Portal |
| Parts Feedback     | To submit feedback for the PARTS section of this bulletin: Submit an IDS ticket to the Parts Department   |

