

REFERENCE:	Nova Bus Manuals
SECTION:	10: Transmission and control
RS N°:	MQR 7621-2486
EFFECTIVE IN PROD.:	LF46

APPLICATION DEADLINES: 2025MA02
CLAIM REFERENCE NUMBER:WB-5540

SUBJECT:	Transmission cooling pipes P-clamps on Engine cradle.
JUSTIFICATION:	P-clamps holding the transmission coolant pipes can break.

LEVEL	DESCRIPTION	DIRECT CHARGES		TIME
		LABOUR	MATERIAL	
1	Replace both P-clamps with a split-block support.	Nova Bus	Nova Bus	1 hr
2	Install supporting P-clamps near the transmission.	Nova Bus	Nova Bus	0.17 hr

DISPOSAL OF PARTS

REMOVED PARTS ARE:	DISCARDED *	RETAINED	* Dispose of the unused parts and the defective parts in accordance with local environmental standards in effect.
	Yes	—	

REVISION HISTORY

REV.	DATE	CHANGE DESCRIPTION	WRITTEN BY
NR	2024FE06	Initial release	Nandan B S

APPROVED BY: Irina

NQF772001 version 5

Negoescu

Signature
numérique de Irina
Negoescu Date :
2024.02.06
09:35:56 -05'00'

PAGE 1 OF 8

MATERIAL REQUIRED PER VEHICLE

QTY	PART N°	REV.	DESCRIPTION
LEVEL 1			
1	N109392	–	Bracket Support Block Pipe Transmission
2	N60204-02	–	Stopper Cooling Pipe Transmission
1	N109389	–	Block Support Cooling Pipe Transmission
1	N75743	–	Screw M8X60 Cap Cyl soc SS A2
1	N93138	–	Screw M8X90 Mach hex SS DIN931
1	N28219	A	Washer Flat M8 Oversize SS
LEVEL 1 SHOP SUPPLIES***			
1 ml	N97665	–	Threadlocker Loctite 243 (50 ml Bottle)
***WHEN YOU ORDER, SPECIFY THE NUMBER OF VEHICLES TO REPAIR.			
LEVEL 2			
2	N31320-09	–	Clamp Loop Type
1	N94639	–	Spacer 3/4OD 3/8TH 3/8ID ZP
1	N44882-03	C	Screw M8X30 H YZ TRIV 96H 8.8
1	N44888	B	Nut Locknyl M8 YZ TRIV 96H 8.8

Materials will be available within 60 days once your order has been placed.

To order, please contact novabus.parts@volvo.com

Or by phone for CANADA 1-800-771-6682, for USA 1-877-999-8808

Specify document number, quantity of parts required and shipping address.

CLIENT	ORDER	ROAD NUMBER		VIN (2NVY/4RKY...)		QTY
		FROM	TO	FROM	TO	
Maryland Transit Administration - MTA - Maryland	LD82	21001	21003	L82J2M9	L82J3M9	3
Maryland Transit Administration - MTA - Maryland	LD82	21004	21013	L82J5M9	L82JXM9	10
Maryland Transit Administration - MTA - Maryland	LD82	21014	21014	L82J6M9	L82J6M9	1
Maryland Transit Administration - MTA - Maryland	LD82	21015	21015	L82J7M9	L82J7M9	1
Maryland Transit Administration - MTA - Maryland	LD82	21016	21020	L82J9M9	L82J0M9	5
Maryland Transit Administration - MTA - Maryland	LD82	21021	21021	L82J2M9	L82J2M9	1
Maryland Transit Administration - MTA - Maryland	LD82	21022	21023	L82J4M9	L82J6M9	2
Maryland Transit Administration - MTA - Maryland	LD82	21024	21024	L82J2M9	L82J2M9	1
Maryland Transit Administration - MTA - Maryland	LD82	21025	21029	L82J4M9	L82J6M9	5
Maryland Transit Administration - MTA - Maryland	LD82	21030	21030	L82J8M9	L82J8M9	1
Maryland Transit Administration - MTA - Maryland	LD82	21031	21034	L82JXM9	L82J0M9	4
Maryland Transit Administration - MTA - Maryland	LD82	21035	21036	L82J2M9	L82J4M9	2
Maryland Transit Administration - MTA - Maryland	LD82	21037	21037	L82J0M9	L82J0M9	1
Maryland Transit Administration - MTA - Maryland	LD82	21038	21038	L82J7M9	L82J7M9	1
Maryland Transit Administration - MTA - Maryland	LD82	21039	21042	L82J9M9	L82J4M9	4
Maryland Transit Administration - MTA - Maryland	LD82	21043	21044	L82J6M9	L82J8M9	2
Maryland Transit Administration - MTA - Maryland	LD82	21045	21045	L82JXM9	L82JXM9	1
Maryland Transit Administration - MTA - Maryland	LD82	21046	21046	L82J2M9	L82J2M9	1
Maryland Transit Administration - MTA - Maryland	LD82	21047	21050	L82J9M9	L82J4M9	4
Maryland Transit Administration - MTA - Maryland	LD82	21051	21070	L82J6M9	L82J9M9	20
Maryland Transit Administration - MTA - Maryland	LE53	22001	22070	L82JXN9	L82J4N9	70

**WARNING**

FOLLOW YOUR INTERNAL SAFETY PROCEDURES.

PROCEDURE

- 1.1. Park the vehicle on an even surface with the transmission on neutral.
- 1.2. Apply the parking brake and set the master control switch to the **stop** position.
- 1.3. Set the battery disconnect switch in the battery compartment to the **off** position.
- 1.4. Locate and open the transmission access trap at the rear of the vehicle.

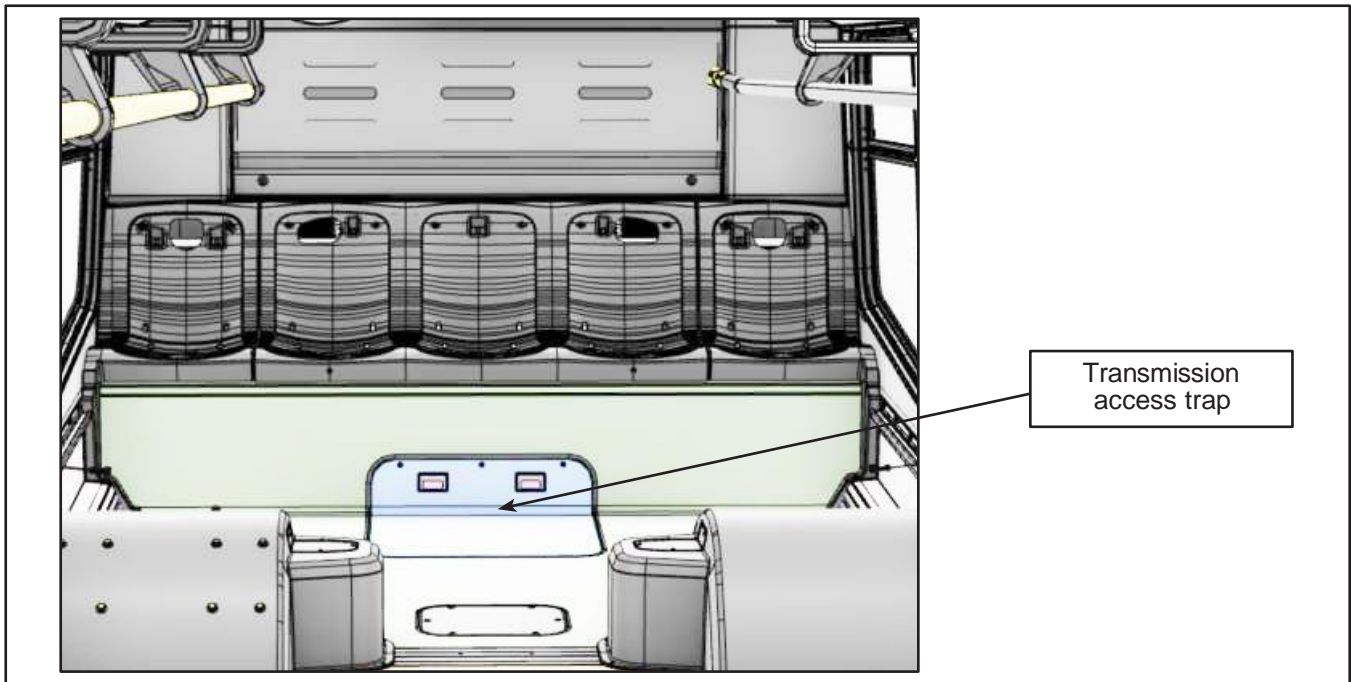


Figure 1 - Transmission Access Trap

Level 1 - Replacement of P-clamps

- 1.5. Locate the two P-Clamps mounted on the engine cradle bracket that secure the two coolant pipes.
- 1.6. Remove the two P-clamps and hardware.

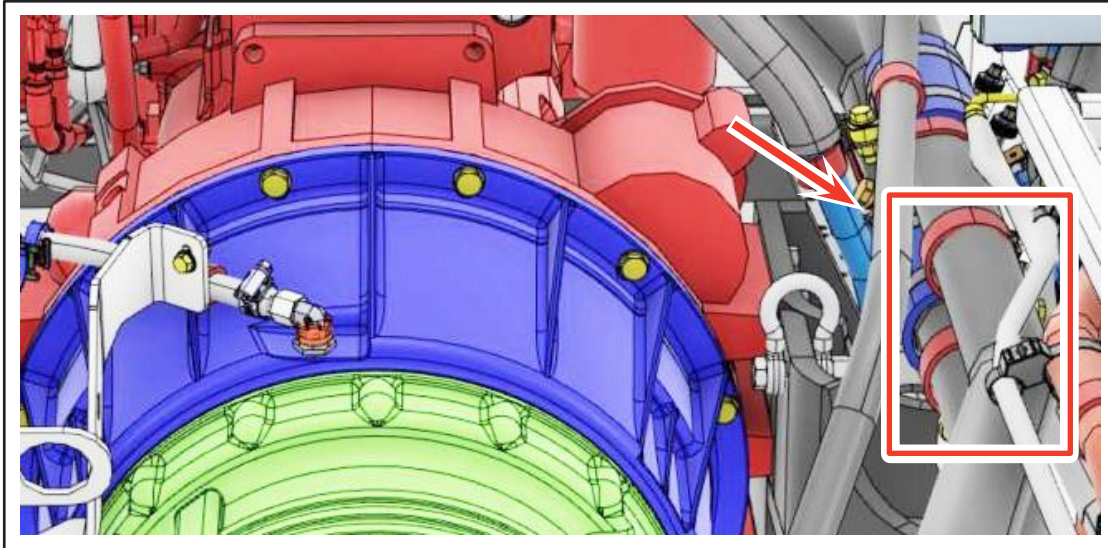


Figure 2 - P-clamps Securing the Transmission Coolant Pipes

- 1.7. Remove the adhesive protective film on items N60204-02 and install onto the backing bracket N109392 above the indentation lines.

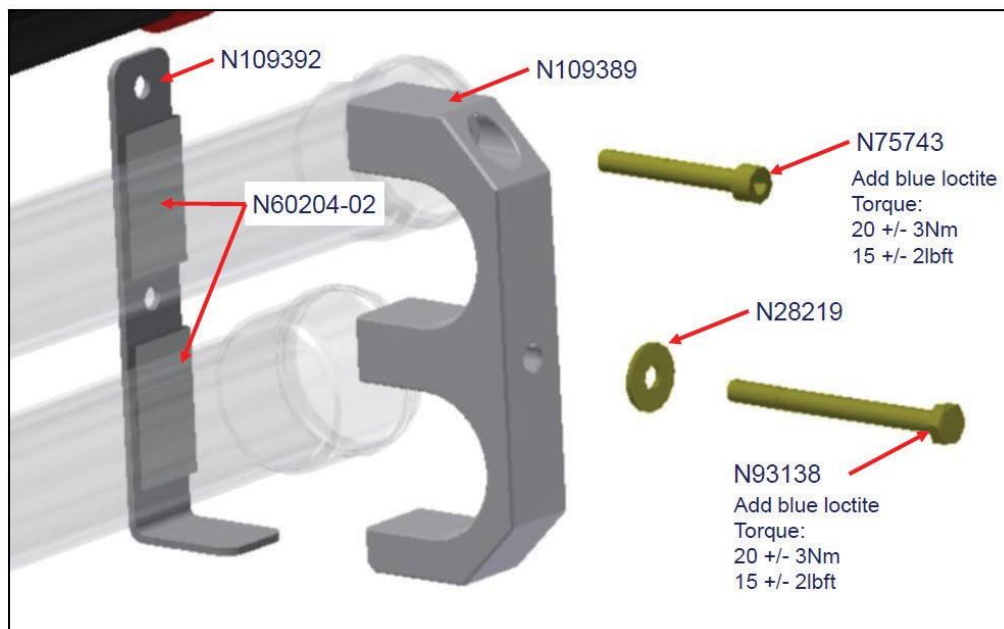


Figure 3 - Removal of Adhesive Protective Film

- 1.8. Install backing bracket N109392 and split block N109389 around the transmission pipes and secure with included hardware. Add blue loctite 243 N97665.

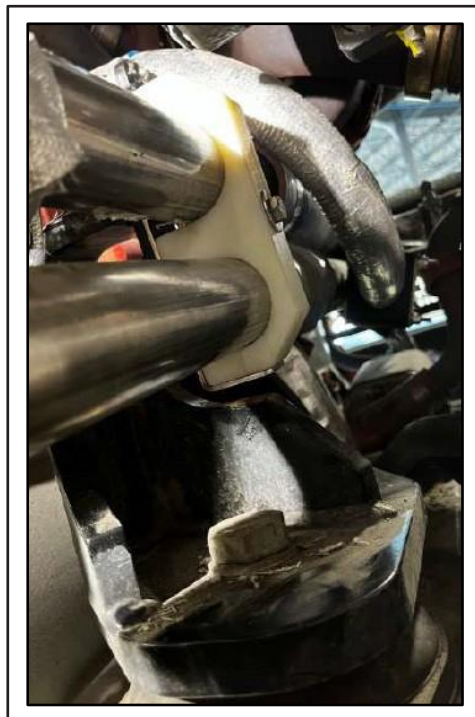
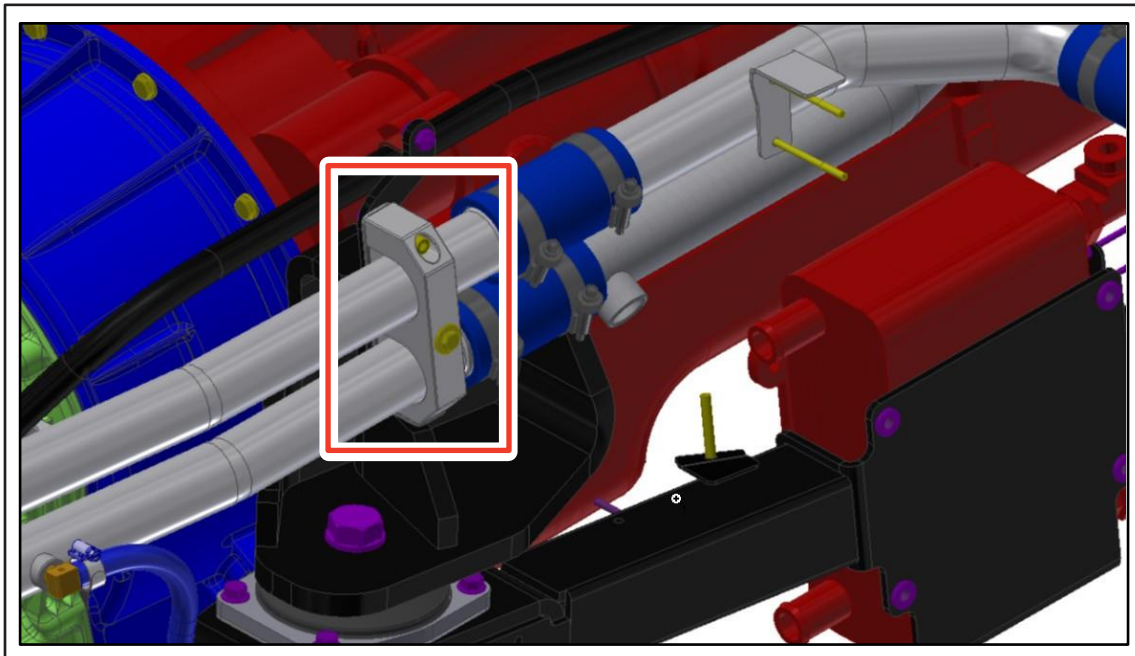


Figure 4 - Installation of Bracket and Split Block

Level 2 - Installation of supporting P-clamps

- 1.9. Inspect the welded metal support brackets further up the pipes near the transmission for breaks.

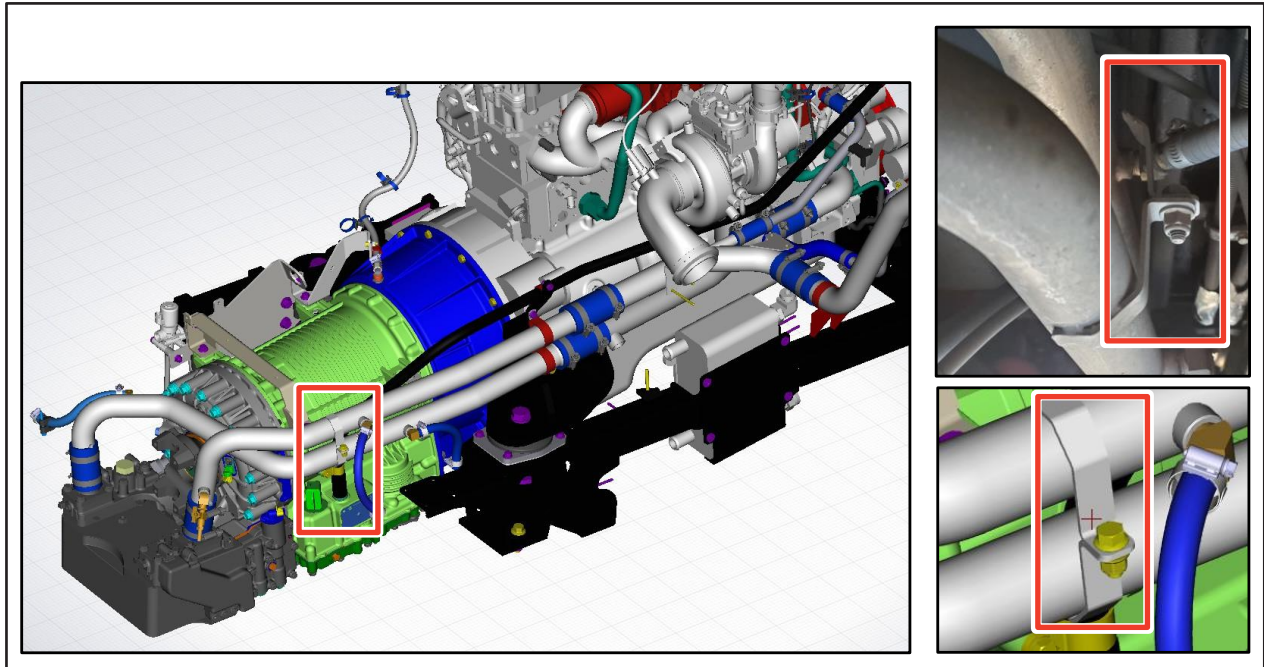


Figure 5 - Inspection of welded support brackets

- 1.10. If broken, remove broken sections and install two p-clamps N31320-09 with spacer N94639, bolt N44882-03 and nut N44888, where possible near the original welded brackets.

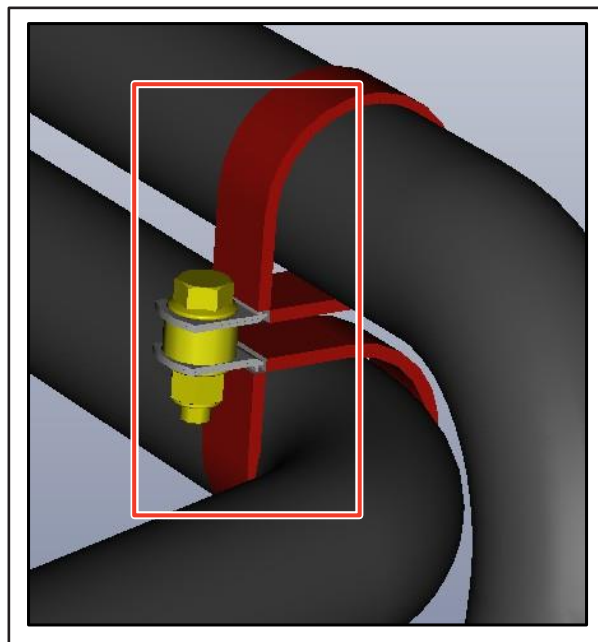


Figure 6 - Installation of P-clamps

- 1.11. Close the transmission access trap.
- 1.12. The vehicle can return in service.❖