

# Technical Service Bulletin

---

## 91 Noises from rear shelf when playing music or driving on rough roads

91 24 64 2044318/3 February 9, 2024. Supersedes Technical Service Bulletin Group 91 number 16-52 dated June 27, 2016 for reasons listed below.

Model(s)	Year	VIN Range	Vehicle-Specific Equipment
A3, and S3	2015 – 2020	All	Not Applicable
RS 3	2017 - 2020		

## Condition

REVISION HISTORY		
Revision	Date	Purpose
3	-	Revised header (Add model years) Revised <i>Warranty</i> (Add Service number, modify labor operations)
2	06/27/2016	Revised <i>Service</i> (Updated instructions for harness clip isolation and added third brake light isolation) Revised <i>Required Parts and Tools</i> (Added protective foil)
1	5/26/2016	Initial publication

### Customer states:

- When music is played, noises can be heard from the rear parcel shelf area where the rear speakers are mounted.

## Technical Background

The noises can be generated by points of contact between the rear parcel shelf trim, subwoofer speaker grille, and the speaker mountings. The subwoofer speaker itself is normally not the source of the noise.

## Production Solution

Isolation of points of contact in the rear parcel shelf area has been implemented in production.


## Service



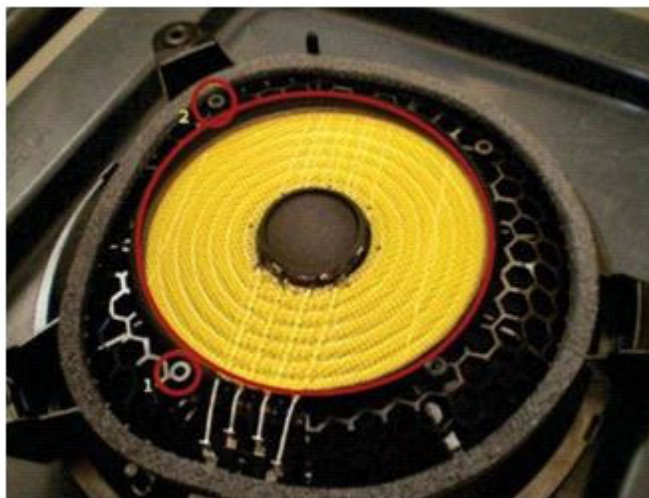
# Technical Service Bulletin

---

1. Remove the rear D-pillar trim, rear speaker trim, and parcel shelf trim to gain access to the rear subwoofer speaker. Remove the rear cover of the speaker and apply fleece adhesive tape (D 373125A2) to the areas shown in the illustration (Figure 1). Apply tape to both the speaker body and the protective grille.

 **NOTICE**

**Avoid the electrical contacts of the speaker when applying the tape.**



*Figure 1. Areas on the speaker body on which to apply textile tape.*

2. The subwoofer speaker has two positioning pins in the housing that must be cut off and ground flat (Figure 2).



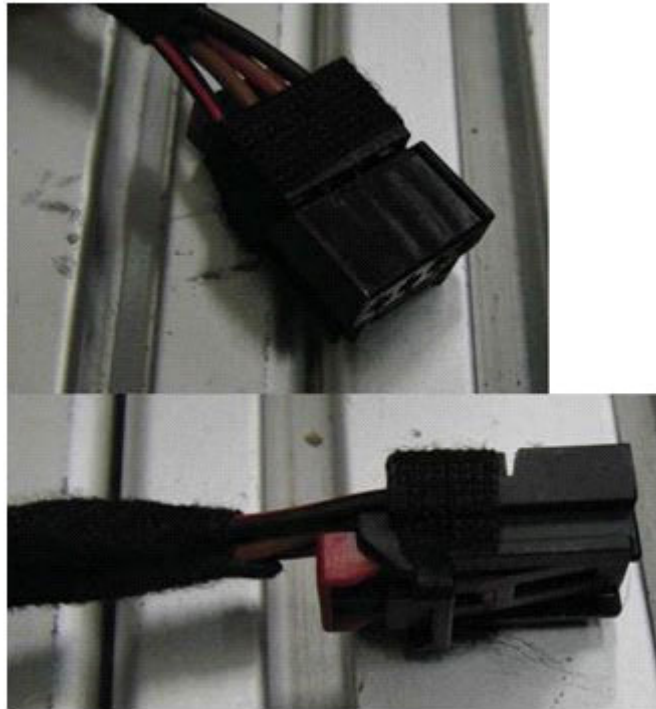
*Figure 2. Positioning pin removed.*



# Technical Service Bulletin

---

3. Apply tape to the electrical connector as shown (Figure 3). Avoid the area of the release tang as tape in this area could compromise a sound electrical connection.



*Figure 3. Subwoofer electrical connection isolated with textile tape.*

4. After connecting the plug, isolate further as shown in the illustration (Figure 4).



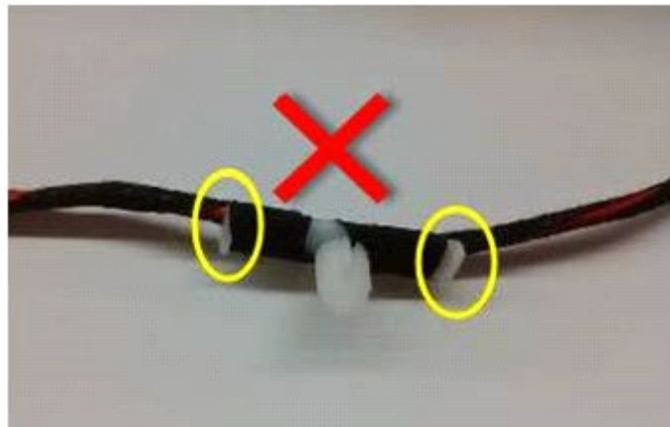
*Figure 4. Subwoofer connector isolated.*



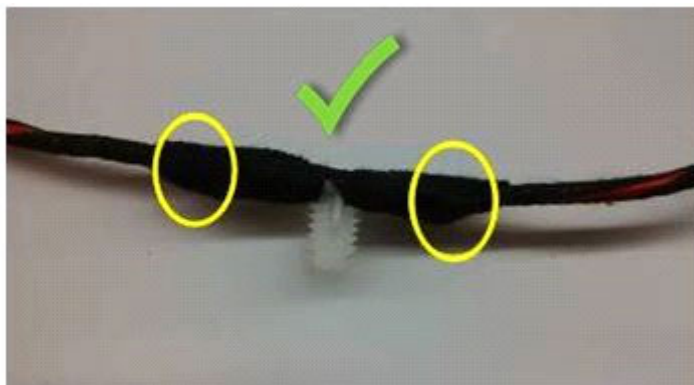
# Technical Service Bulletin

---

5. Wrap the harness mounting clips in the rear shelf area, ensuring that the clip ends are sufficiently isolated (Figure 5 and Figure 6). It is important to completely wrap the clips so that no plastic is in direct contact with the body.



*Figure 5. Harness mounting clip insufficiently isolated.*



*Figure 6. Harness mounting clip properly isolated.*

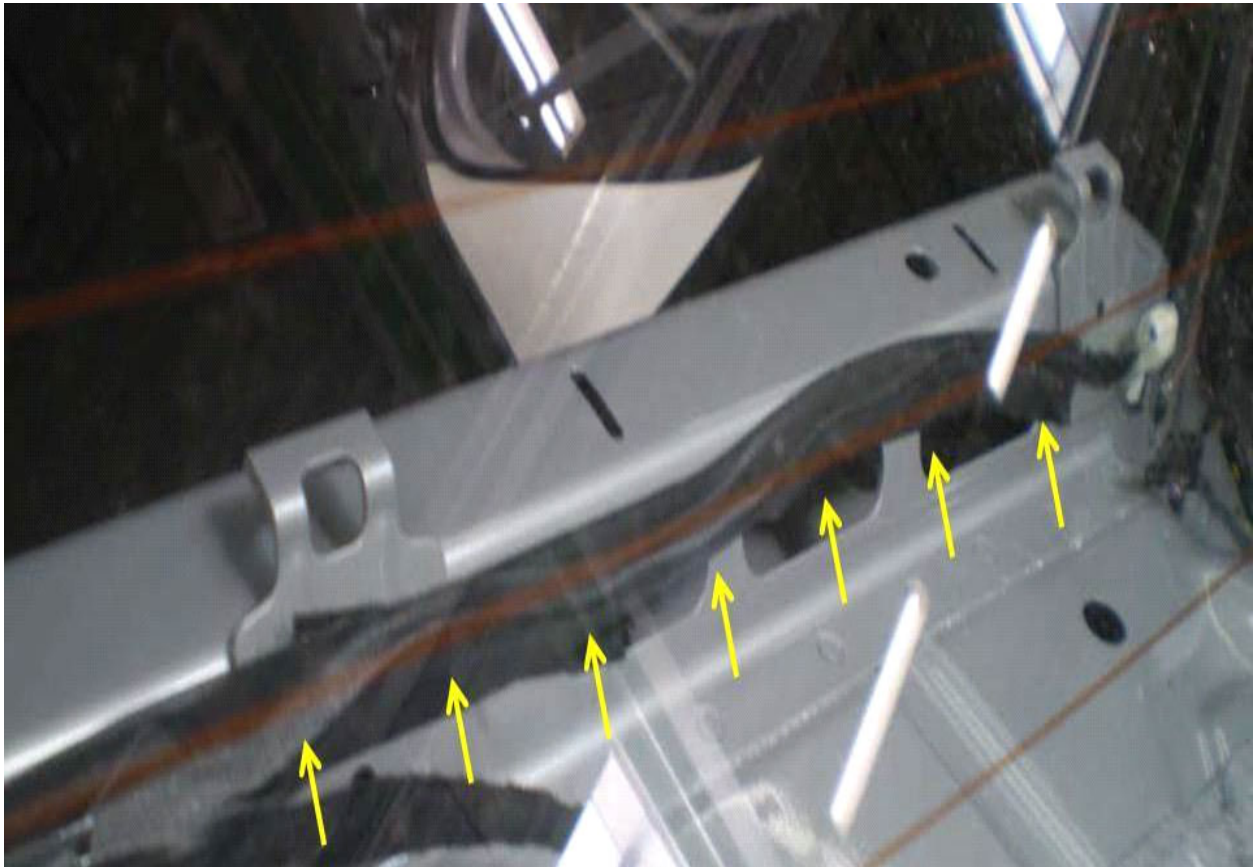
6. Using a wide textile tape, tape down the antenna cable across the rear shelf (Figure 7).





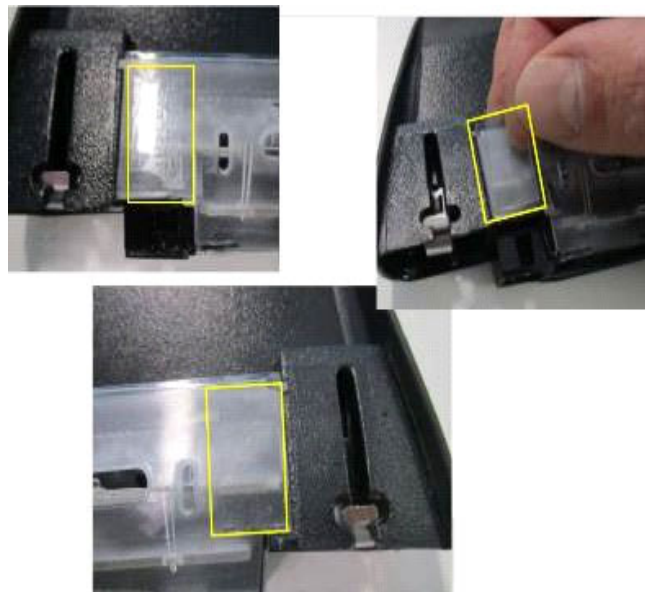
# Technical Service Bulletin

---



*Figure 7. Antenna cable taped to rear shelf.*

7. Remove the third brake light assembly and apply protective foil (part number AKL44803005) to the points of contact with the body (Figure 8). After reassembly, inspect the third brake light for a secure fit. Repair if found to be loose and/or a possible source of noise during audio playback.





# Technical Service Bulletin

**Figure 8.** Protective foil applied to contact points of the third brake light assembly.

## Warranty

<b>Claim Type:</b>	<ul style="list-style-type: none"> <li>• 110 Up to 48 Months/50,000 Miles.</li> <li>• G10 for CPO Covered Vehicles – Verify Owner.</li> <li>• If the vehicle is outside of any warranty, this Technical Service Bulletin is informational only.</li> </ul>		
<b>Service Number:</b>	7030 (loudspeaker, central wiring harness) or 9470 (high-mount brake light)		
<b>Damage Code:</b>	0020		
<b>Labor Operations:</b>	Luggage compartment cover remove+reinstall	7030 1920	See SRT with associated operations
	Modify rear loudspeaker	9142 4999	20 TU
	Modify central wiring harness	9709 4999	20 TU
	High-mount brake light remove+reinstall	9470 1900	See SRT with associated operations
	Modify high-mount brake light	9470 0199	20 TU
<b>Diagnostic Time:</b>	GFF	No allowance	0 TU
	Road test prior to service procedure	0121 0002	10 TU
	Road test after service procedure	0121 0004	10 TU
<b>Claim Comment:</b>	As per TSB 2044318/3		



# Technical Service Bulletin

---

All warranty claims submitted for payment must be in accordance with the *Audi Warranty Policies and Procedures Manual*. Claims are subject to review or audit by Audi Warranty.

## Required Parts and Tools

Part Number	Part Description	Quantity
D 373125A2	 Fleece Adhesive Tape	0.3
AKL44803005	 Protective Foil	0.1

## Additional Information

All parts and service references provided in this TSB (**2044318**) are subject to change and/or removal.

©2024 Audi of America, Inc. All rights reserved. The information contained in this document is based on the latest information available at the time of printing and is subject to the copyright and other intellectual property rights of Audi of America, Inc., its affiliated companies, and its licensors. All rights are reserved to make changes at any time without notice. No part of this document may be reproduced, stored in a retrieval system, or transmitted in any form or by any means, electronic, mechanical, photocopying, recording, or otherwise, nor may these materials be modified or reposted to other sites without the prior expressed written permission of the publisher.