



# TECHNICAL SERVICE BULLETIN

Classification: DA23-007	Reference: NTB24-005	Date: January 18, 2024
-----------------------------	-------------------------	---------------------------

## ENGINE RPM HIGHER THAN EXPECTED WHEN USING INTELLIGENT CRUISE CONTROL

**APPLIED VEHICLES:** 2022-2023 Frontier (D41)  
**APPLIED DATES:** Built on or before June 13, 2023

### IF YOU CONFIRM

The customer states the engine RPM is higher than expected after a downshift when using ICC.

### ACTION

Follow the **SERVICE PROCEDURE** in this bulletin to:

1. Confirm the current ICC/ADAS 2 part number.
2. Reprogram the ICC/ADAS 2, if applicable.
3. Configure the ICC/ADAS 2.
4. Erase the DTCs.

**IMPORTANT:** The purpose of **ACTION** (above) is to give you a quick idea of the work you will be performing. You **MUST** closely follow the entire **SERVICE PROCEDURE** as it contains information that is essential to successfully completing this repair.

Bulletins are intended for use by qualified technicians, not 'do-it-yourselfers'. Qualified technicians are properly trained individuals who have the equipment, tools, safety instruction, and know-how to do a job properly and safely. **NOTE:** If you believe that a described condition may apply to a particular vehicle, **DO NOT** assume that it does. See your Nissan dealer to determine if this applies to your vehicle.

## SERVICE PROCEDURE

### Confirm the ICC/ADAS 2 Part Number

**IMPORTANT:** Before starting, make sure:

- ASIST on the CONSULT PC has been synchronized (updated) to the current date.
- All C-III plus software updates (if any) have been installed.
- During the reprogramming process, you will receive some errors. These errors are expected. Please follow all of the steps in this procedure to successfully complete the reprogramming process.

#### **NOTICE**

- Connect a battery maintainer or smart charger set to reflash mode or a similar setting. If the vehicle battery voltage drops below 12.0V or rises above 15.5V during reprogramming, the ICC/ADAS 2 control unit may be damaged.
  - Be sure to turn OFF all vehicle electrical loads. If a vehicle electrical load remains ON, the ICC/ADAS 2 control unit may be damaged.
  - Be sure to connect the AC Adapter. If the CONSULT PC battery voltage drops during reprogramming, the process will be interrupted and the ICC/ADAS 2 control unit may be damaged.
  - Turn OFF all external Bluetooth® devices (e.g., cell phones, printers, etc.) within range of the CONSULT PC and the VI. If Bluetooth® signal waves are within range of the CONSULT PC or VI during reprogramming, reprogramming may be interrupted and the ICC/ADAS 2 control unit may be damaged.
1. Connect the Vehicle Interface (VI) to the vehicle.
    - Make sure to use the correct VI for the CONSULT PC.
  2. Turn the ignition ON with the engine OFF.
  3. Turn ON the hazard warning lights.
  4. Start C-III plus.
  5. If prompted, select **USA/CANADA Dealers** from the drop down menu, and then select **OK**.

6. Login using your NNAnet credentials.

**IMPORTANT:** If not prompted to enter your username and password, the CONSULT PC may not be connected to Wi-Fi. Close C-III plus, confirm the CONSULT PC is connected to Wi-Fi, and then reopen C-III plus.

7. Wait for the VI to be recognized.

- The serial number will display when the VI is recognized.

8. Select **Re/programming, Configuration**.

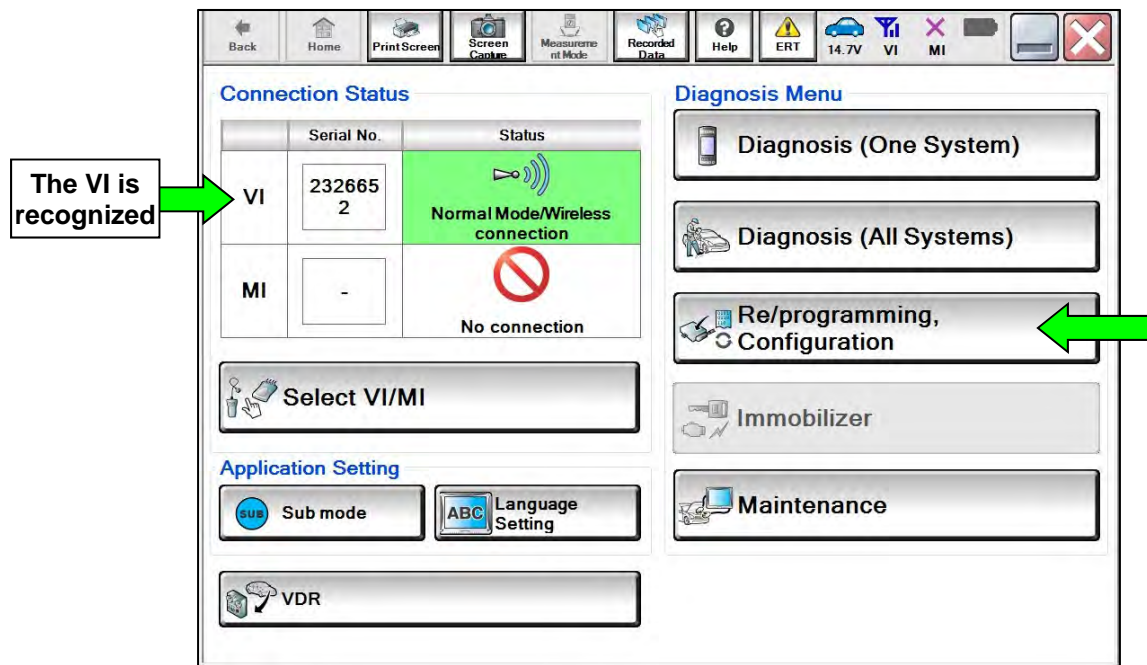


Figure 1

- Check the box confirming the precautions have been read, and then select **Next**.

**HINT:** Use the arrows (if needed) to view and read all precautions.

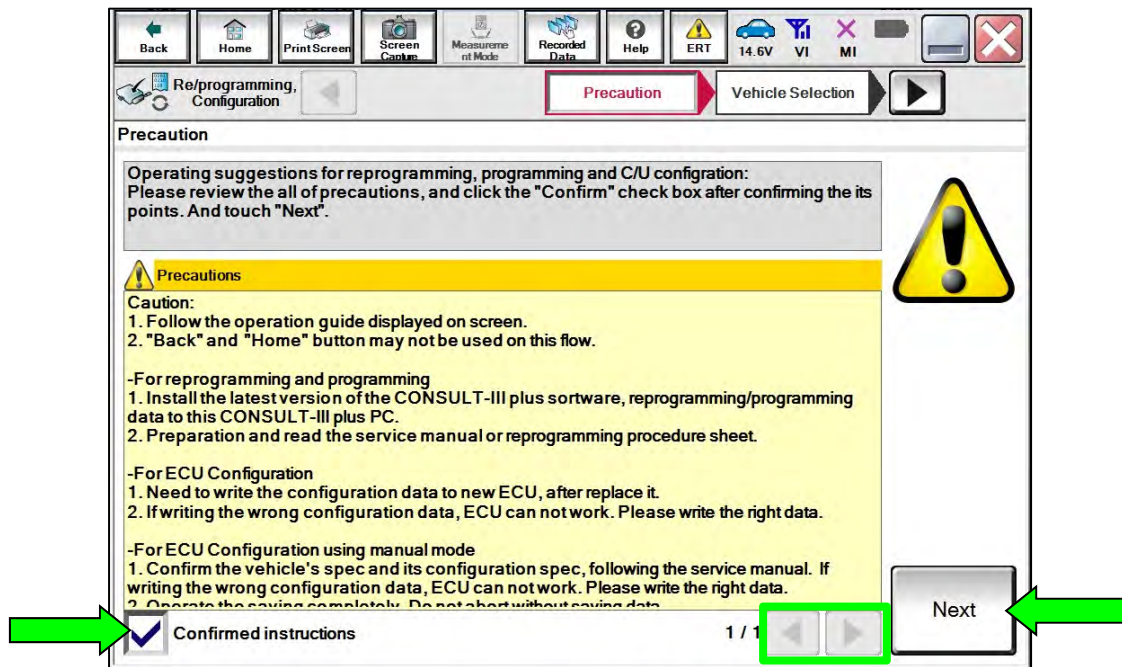


Figure 2

- Select **Automatic Selection(VIN)**.

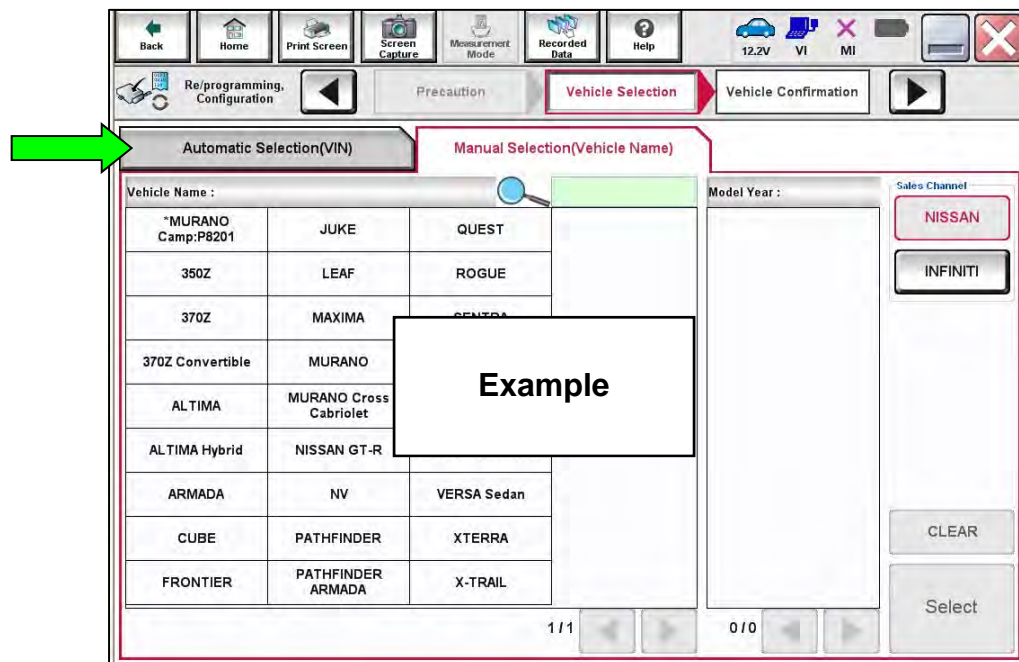


Figure 3

11. Make sure the **VIN or Chassis #** matches the vehicle's VIN, and then select **Confirm**.

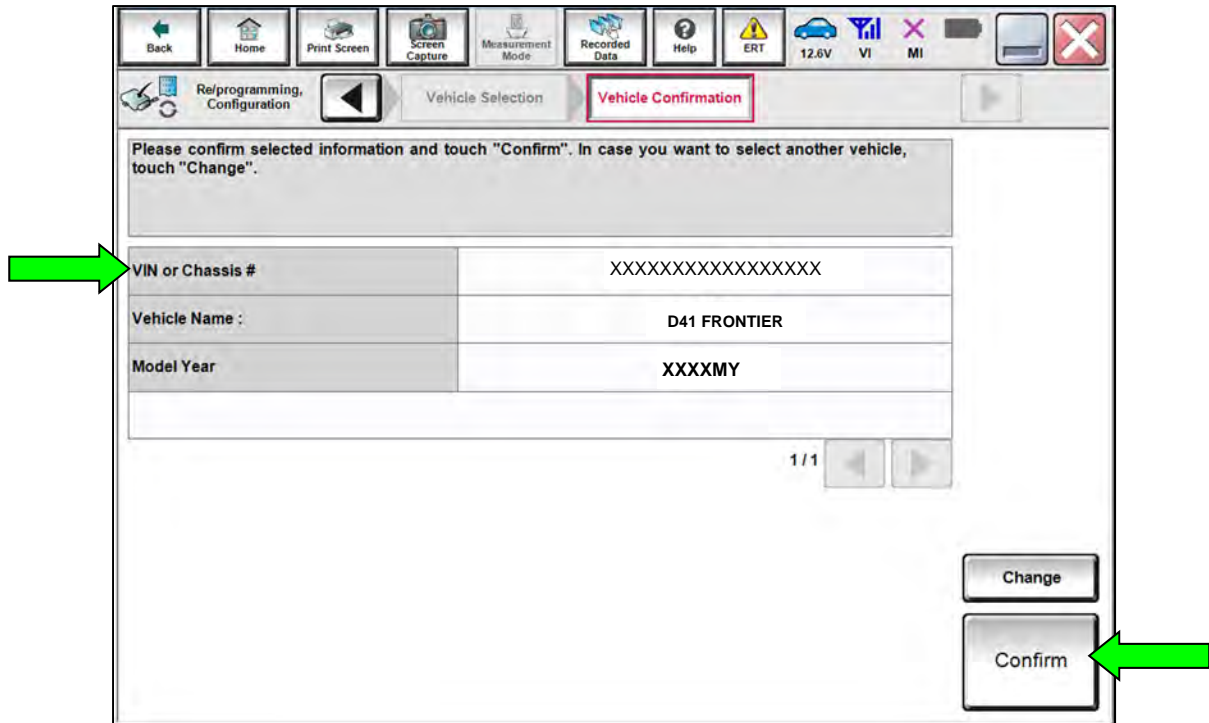


Figure 4

12. Confirm the VIN is correct for the vehicle, and then select **Confirm**.

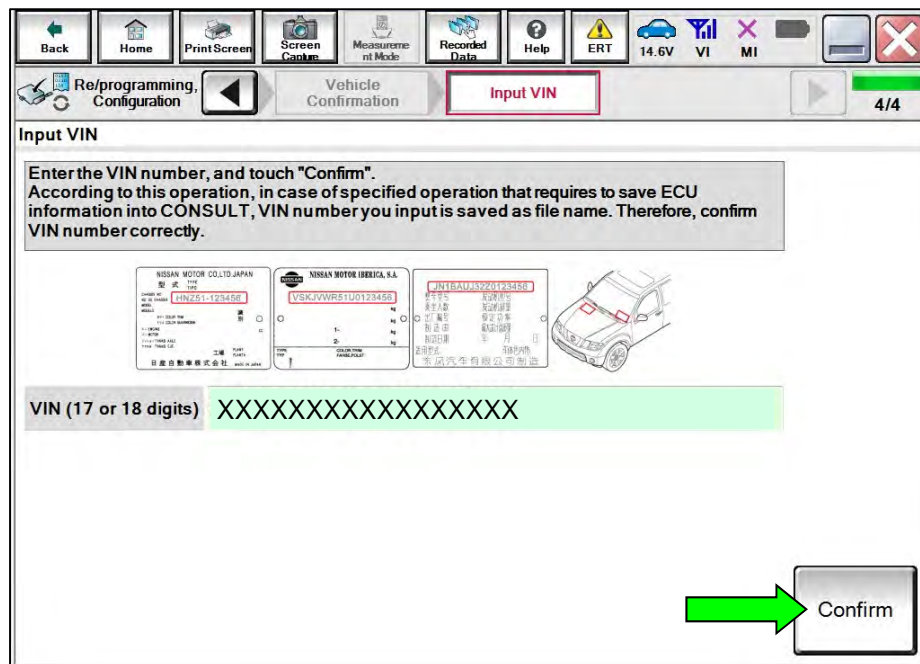


Figure 5

13. Select ICC/ADAS 2.

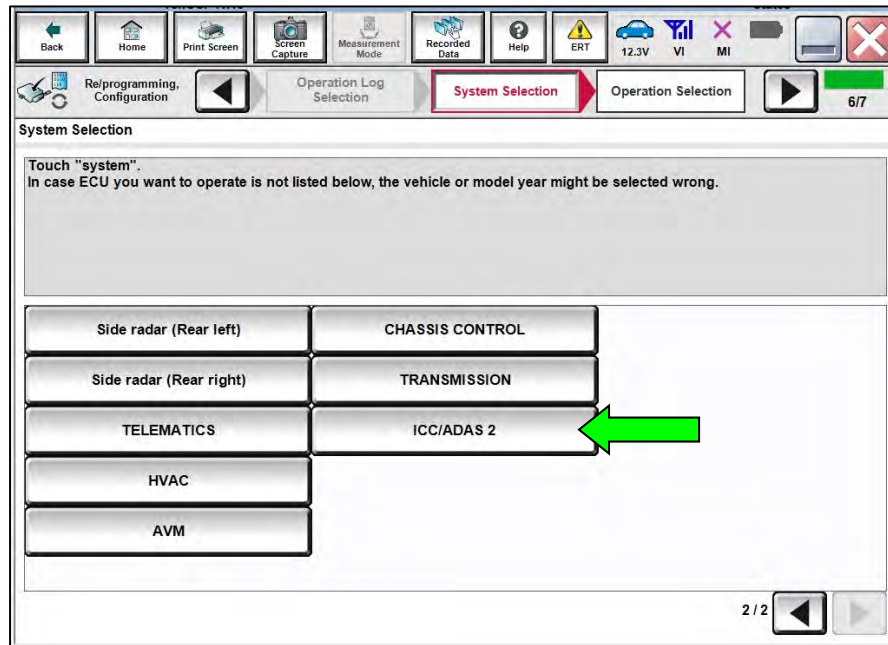


Figure 6

14. Select Reprogramming.

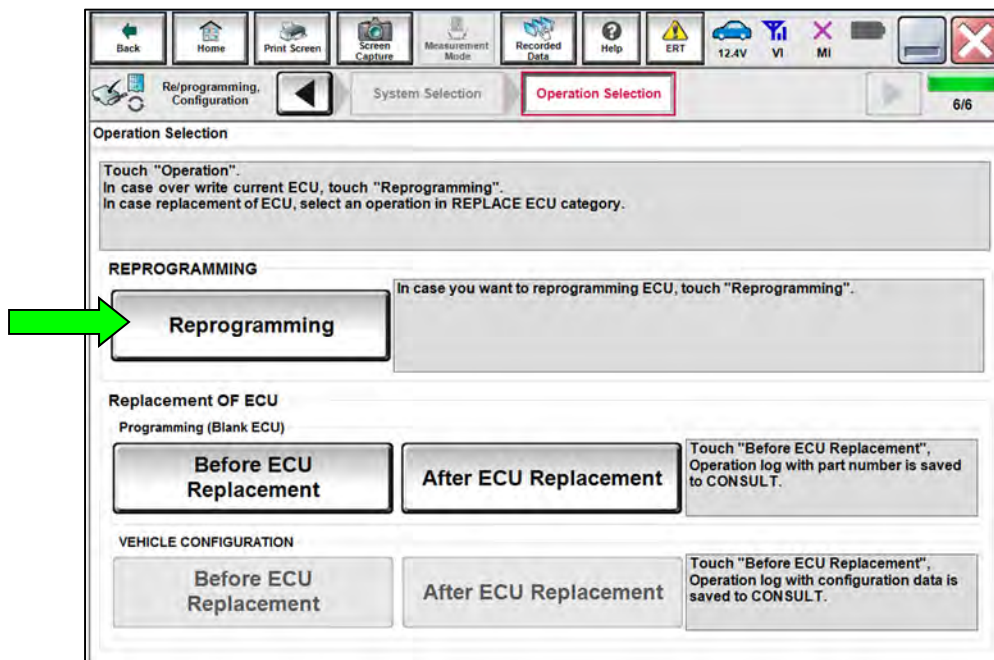


Figure 7

- Find the ICC/ADAS 2 **Part Number** and write it on the repair order, and then select **Save**.

**HINT:** This is the current ICC/ADAS 2 Part Number (P/N).

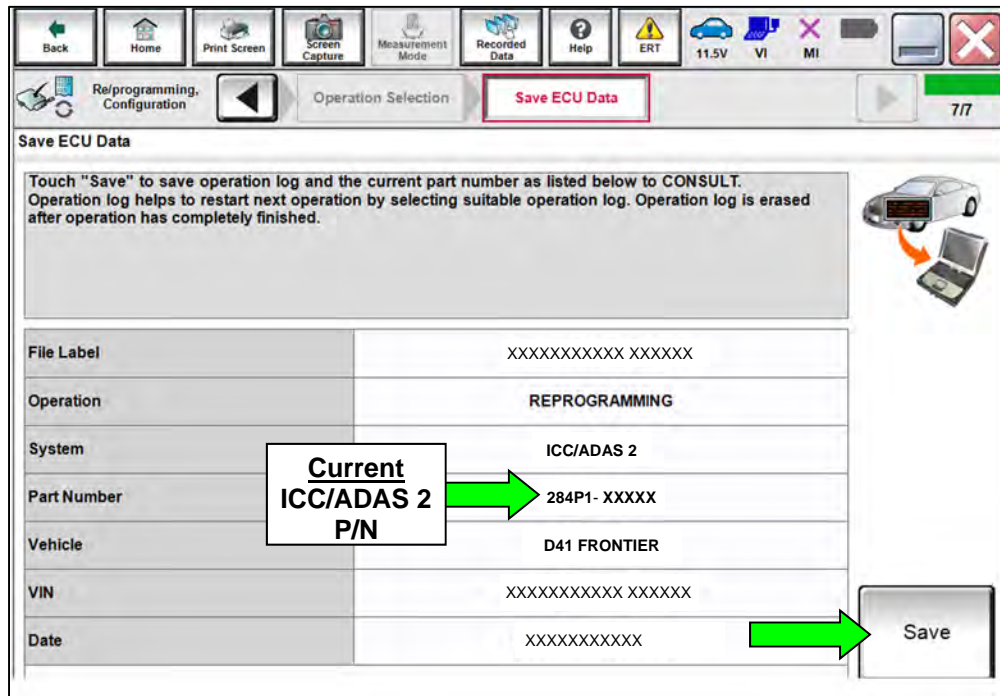


Figure 8

- Compare the P/N you wrote down in step 15 to the numbers in the **Current ICC/ADAS 2 Part Number** column in **Table A**.
  - If there is a match in **Table A**, continue with the reprogramming procedure.
  - If there is not a match, in **Table A**, this bulletin does not apply. See the ESM for further diagnostic information.

Table A

<b>CURRENT ICC/ADAS 2 PART NUMBER: 284P1-</b>
9BU3A, 9BU3C, 9BU4B, 9BU4D, 9BU4E, 9BV3B, 9BV3C, 9BV3D, 9BV3E

## ICC/ADAS 2 Reprogramming

17. Check the box confirming the precautions have been read, and then select **Next**.

**HINT:** Use the arrows (if needed) to view and read all precautions.

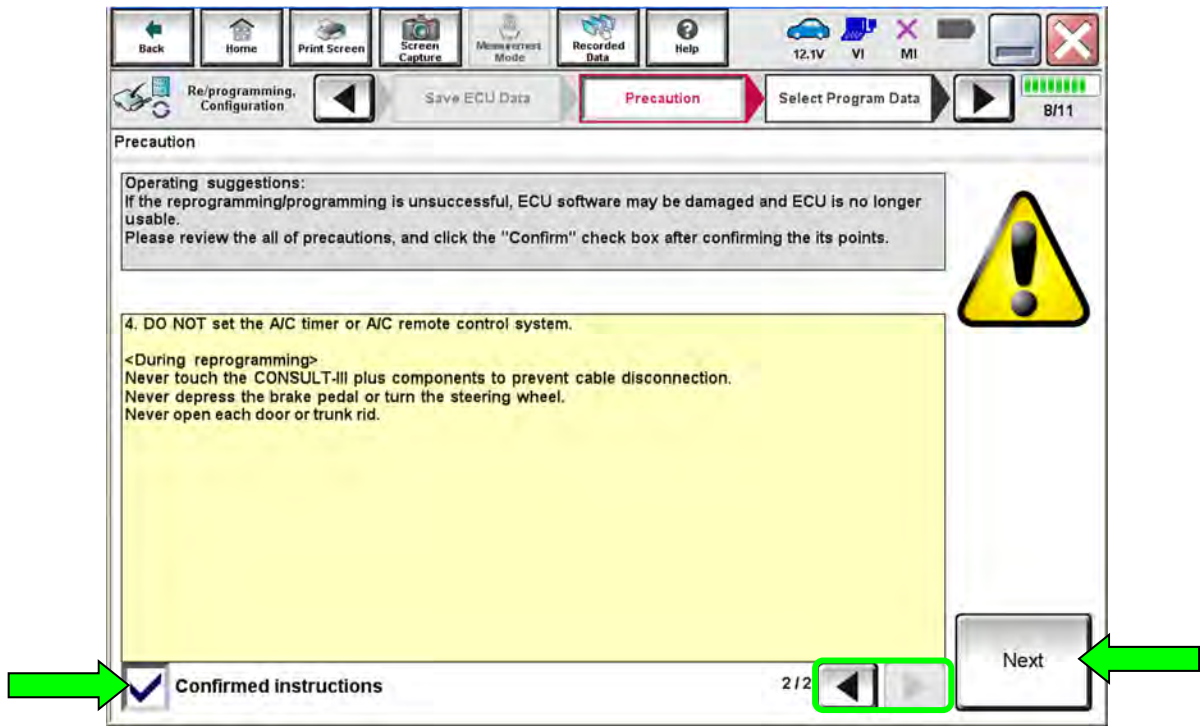


Figure 9

18. Confirm the battery charger is ON and the battery voltage is between 12V-15.5V, and then select **Next**.

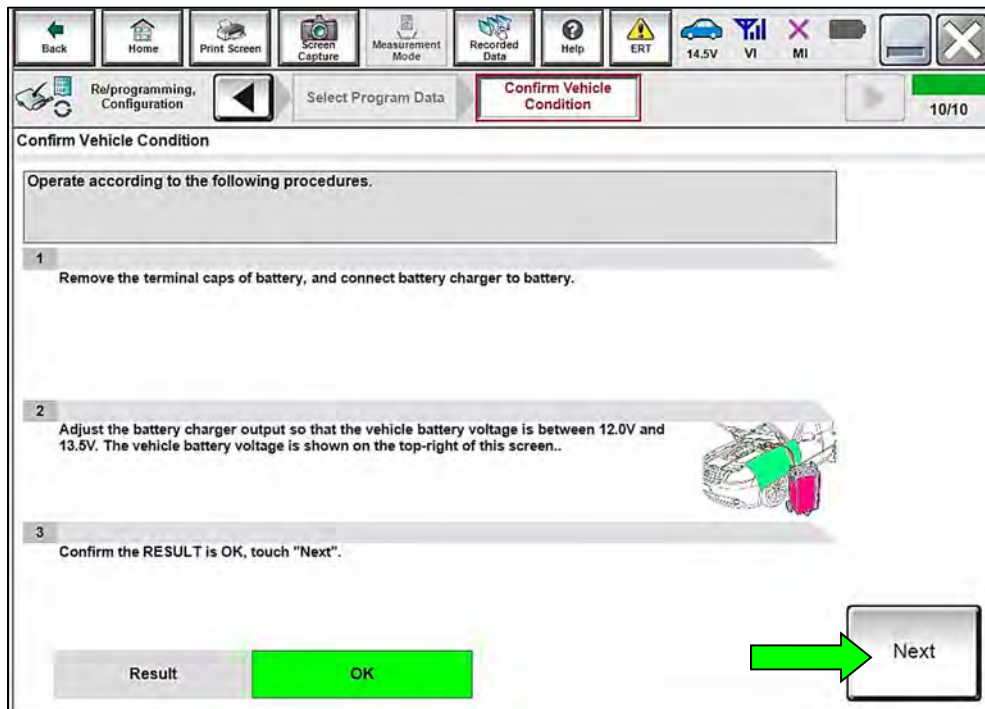


Figure 10



- Confirm the **Judgement** for all the **Monitor Items** are “OK”, and then select **Start**.

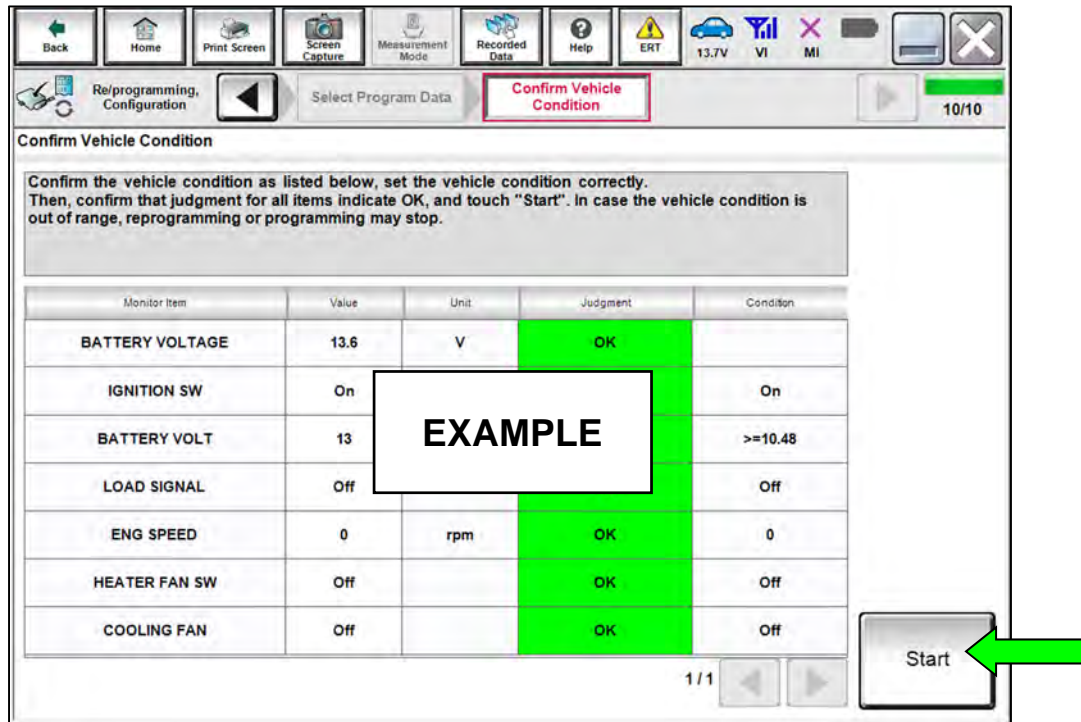


Figure 11

- Allow **Transfer Data** to complete.

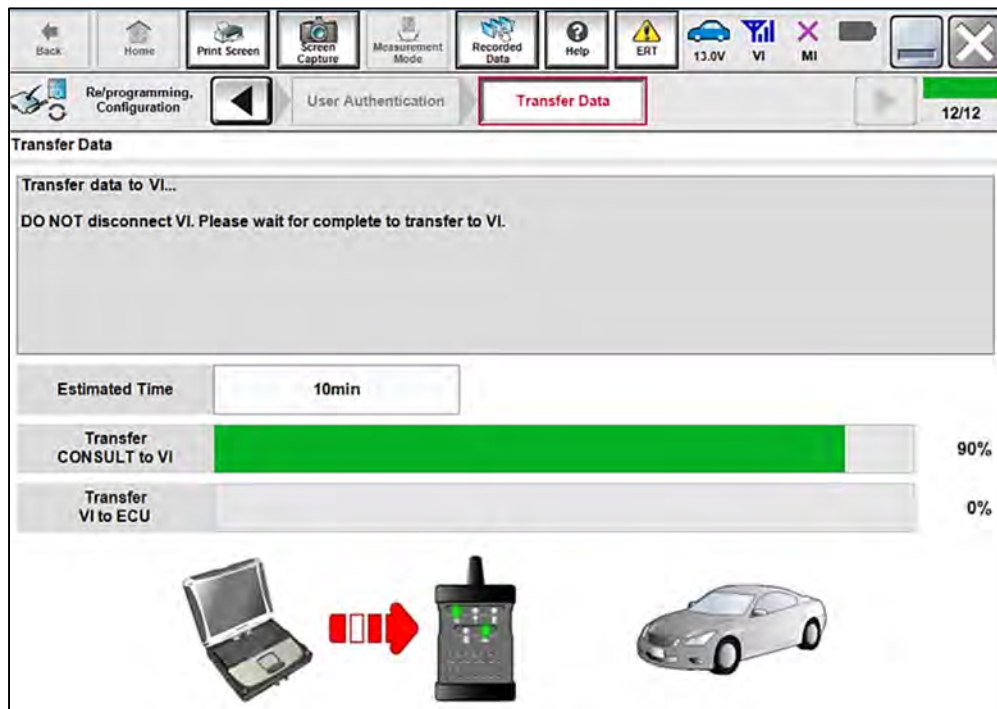


Figure 12

21. Once the reprogramming completes, select **Next**.

**HINT:**

- If the screen in Figure 13 does not display (indicating that reprogramming did not complete), refer to the information on the next page.
- Additional steps/operations are required before CONSULT will provide the final reprogramming confirmation report. Continue with the reprogramming procedure on page 12.

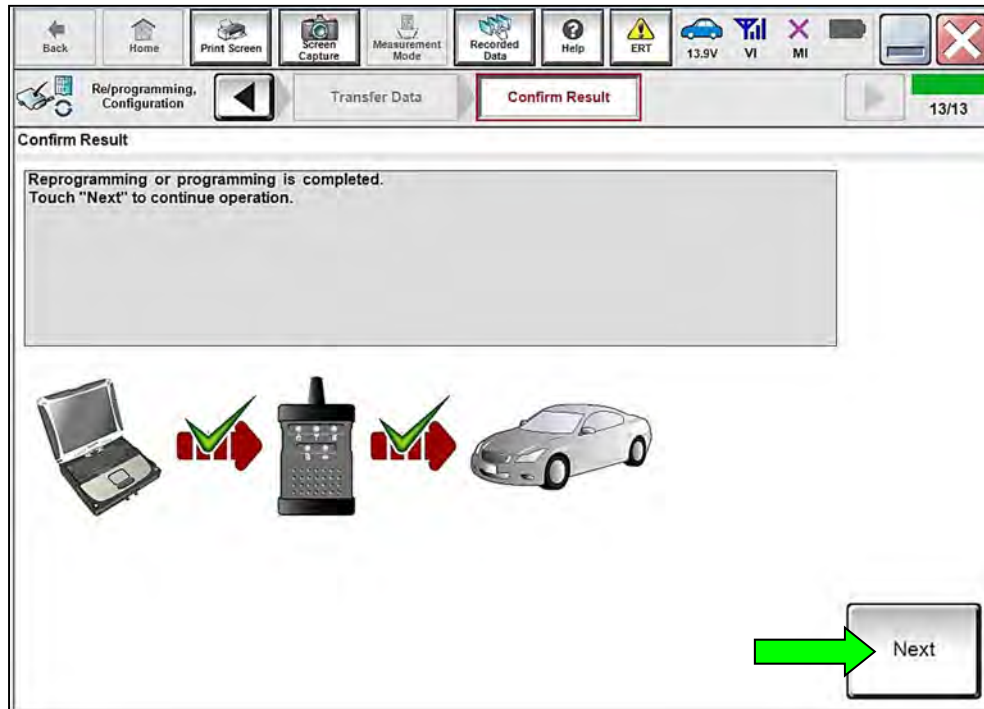


Figure 13

## ICC/ADAS 2 Recovery

**Do not disconnect the VI or shut down CONSULT if reprogramming does not complete.**

If reprogramming does not complete and the “!?” icon displays, as shown in Figure 14:

- Check battery voltage (12.0 - 15.5 V).
- Ignition is ON, engine OFF.
- External Bluetooth® devices are OFF.
- **All** electrical loads are OFF.
- Select **Retry** and follow the on screen instructions.
- Retry may not go through on first attempt and can be selected more than once.

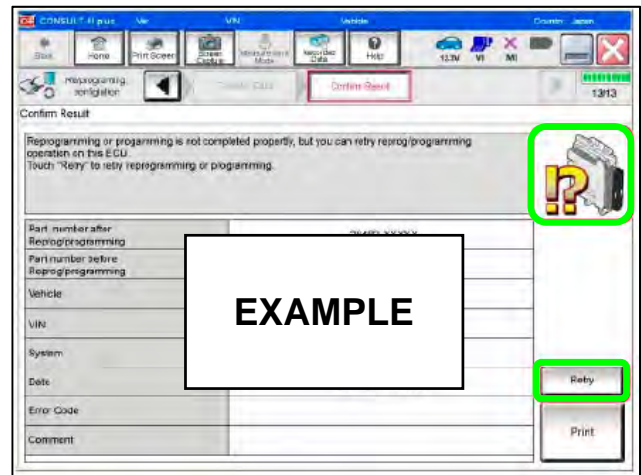


Figure 14

If reprogramming does not complete and the “X” icon displays, as shown in Figure 15:

- Check battery voltage (12.0 - 15.5 V).
- CONSULT A/C adapter is plugged in.
- Ignition is ON, engine OFF.
- Transmission is in Park.
- All VI cables are securely connected.
- All C-III plus updates are installed.
- Select **Home**, and restart the reprogram procedure from the beginning.

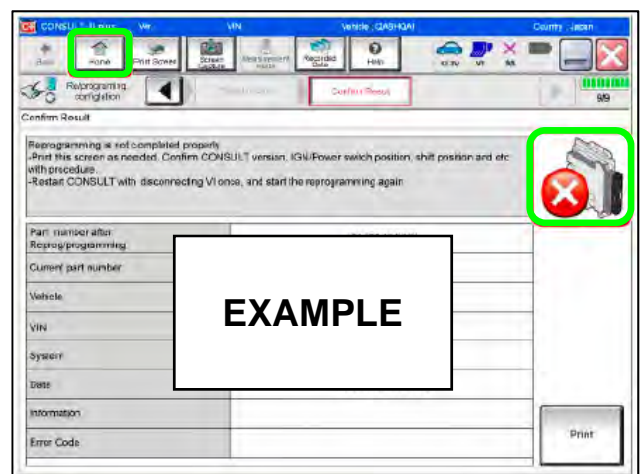


Figure 15

22. Perform **Erase All DTCs**.

a. Follow the on-screen instructions as shown in Figure 16 and Figure 17.

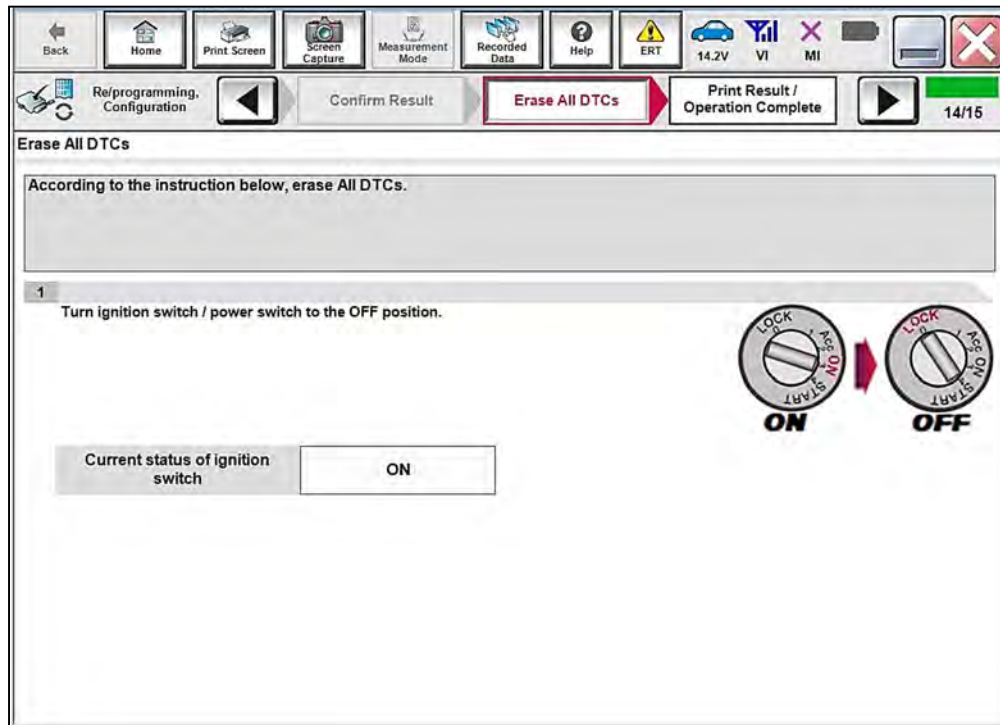


Figure 16

b. Select **Next**.

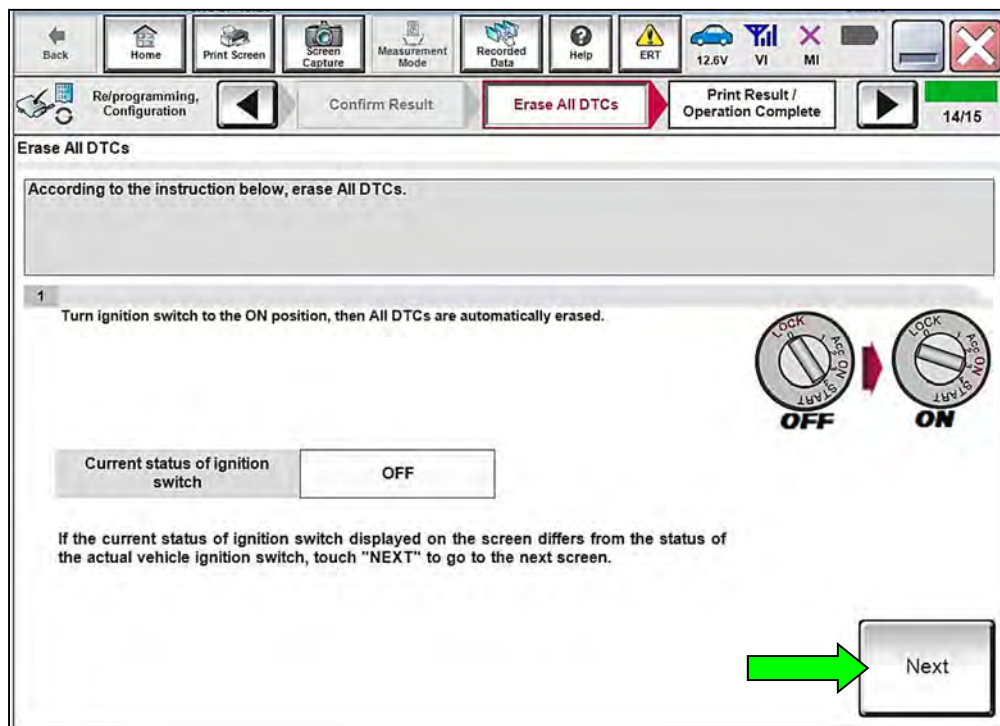


Figure 17

- Verify the **Part number after Reprog/programming** and **Part number before Reprog/programming** are different, select **Print** and attach the reprogramming results to the repair order, and then select **Confirm**.

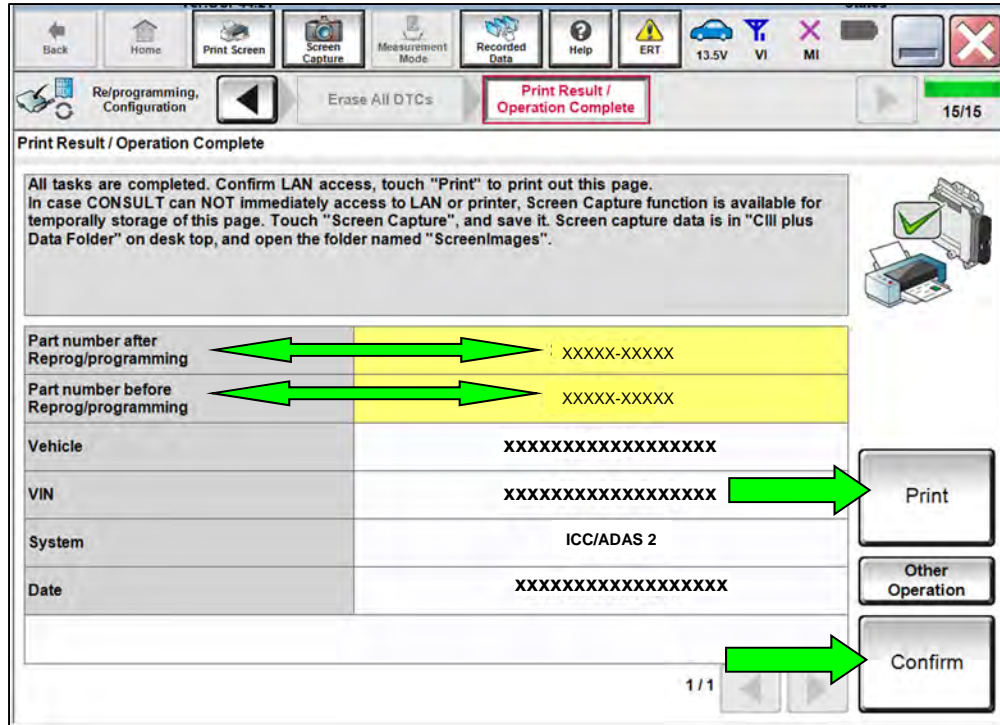


Figure 18

- Select **Home**.

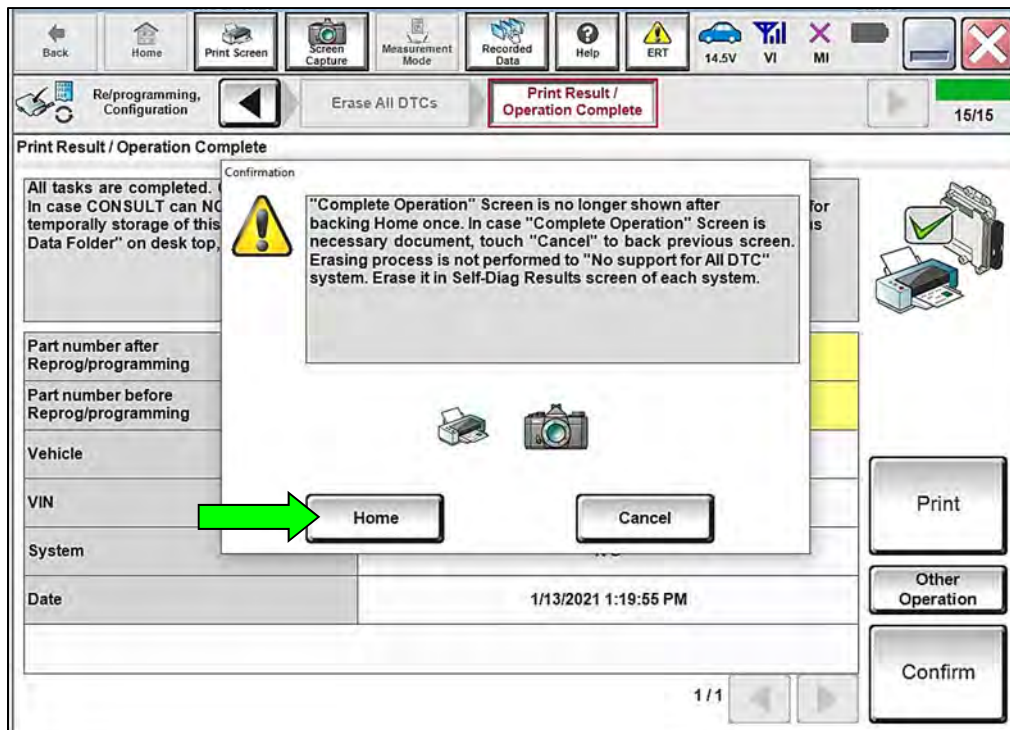


Figure 19

## ICC/ADAS 2 Configuration

25. Select **Re/programming, Configuration**.

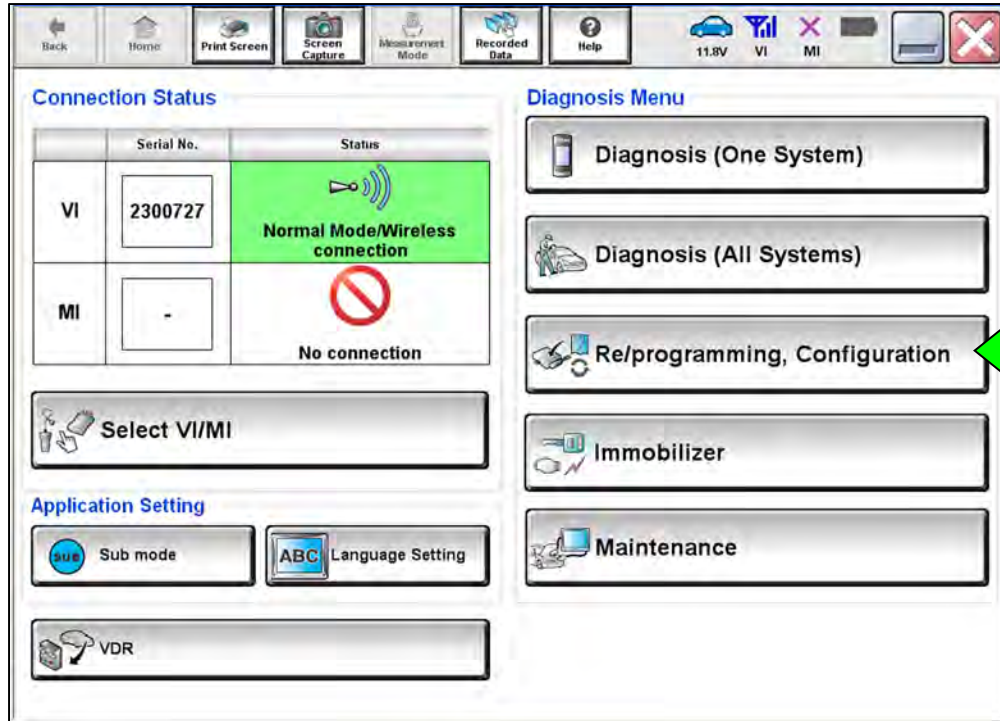


Figure 20

26. Check the box confirming the precautions have been read, and then select **Next**.

**HINT:** Use the arrows (if needed) to view and read all precautions.

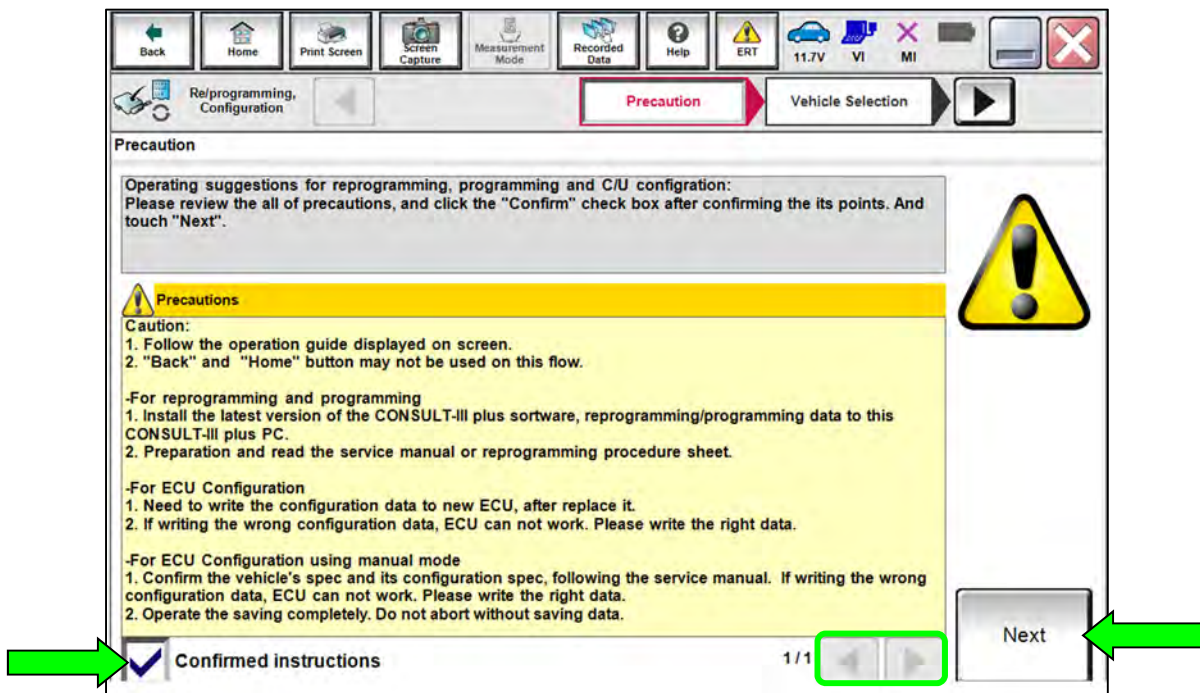


Figure 21

27. Select **Automatic Selection(VIN)**.

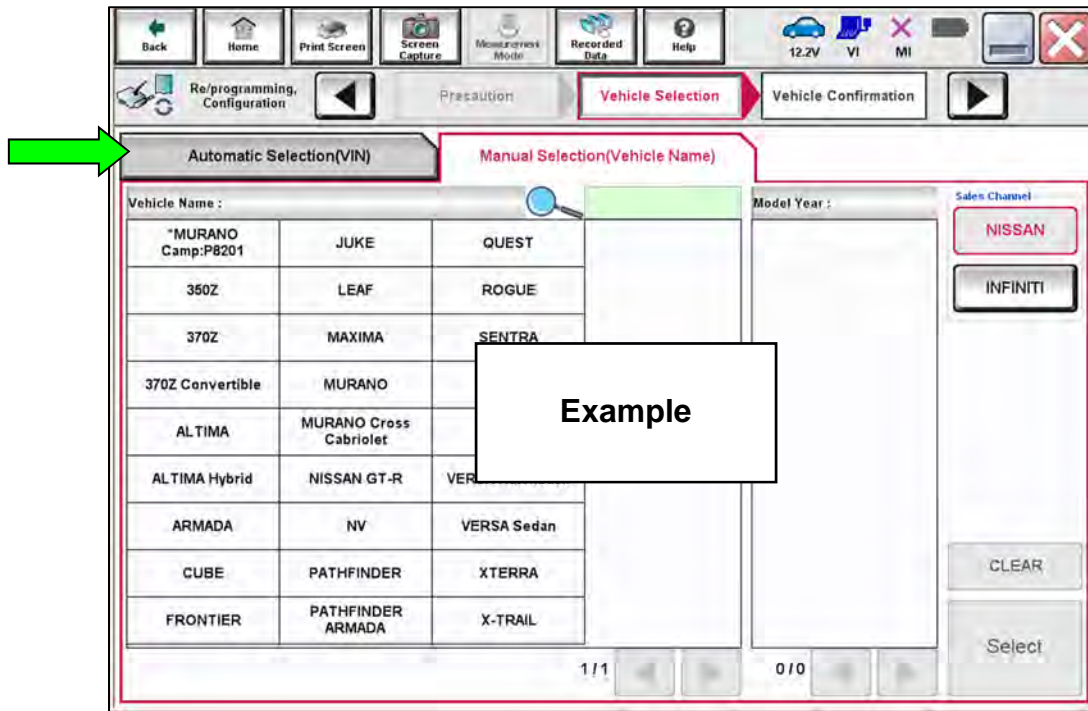


Figure 22

28. Confirm the **VIN or Chassis #** is correct, and then select **Confirm**.

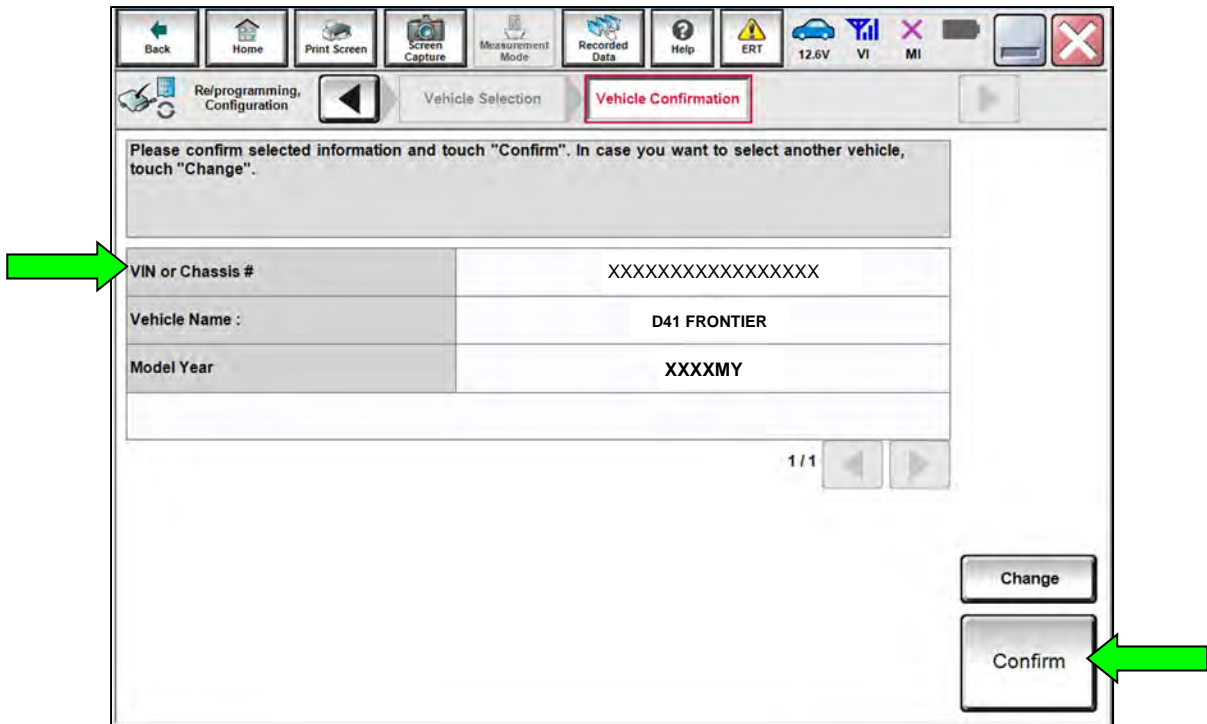


Figure 23

29. Confirm the VIN is correct for the vehicle, and then select **Confirm**.

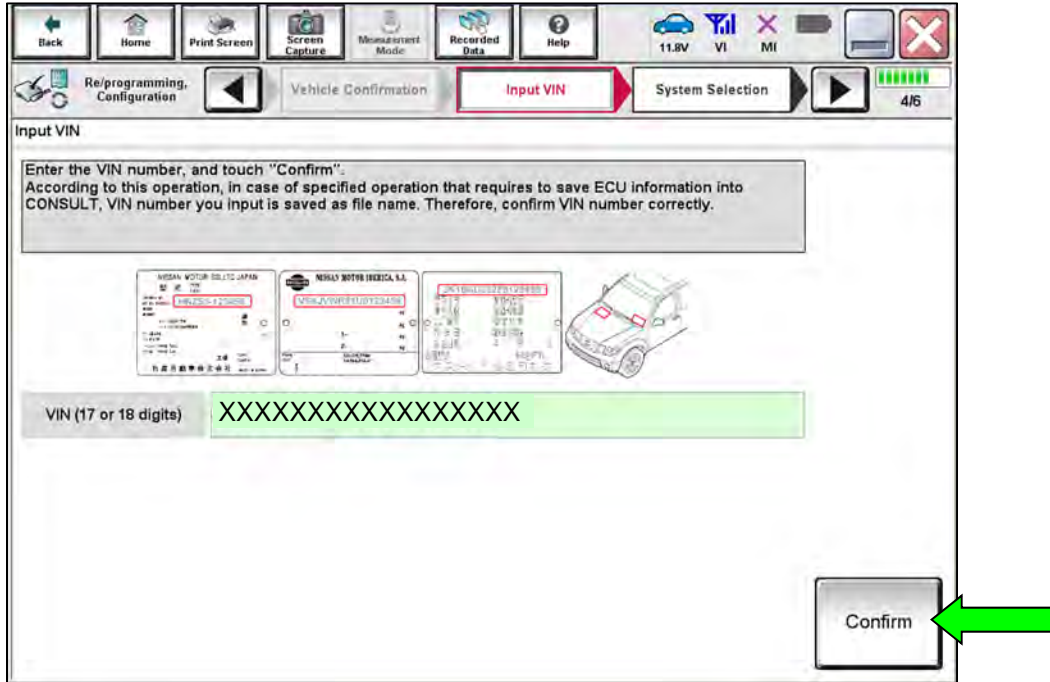


Figure 24

30. Select **ICC/ADAS 2**.

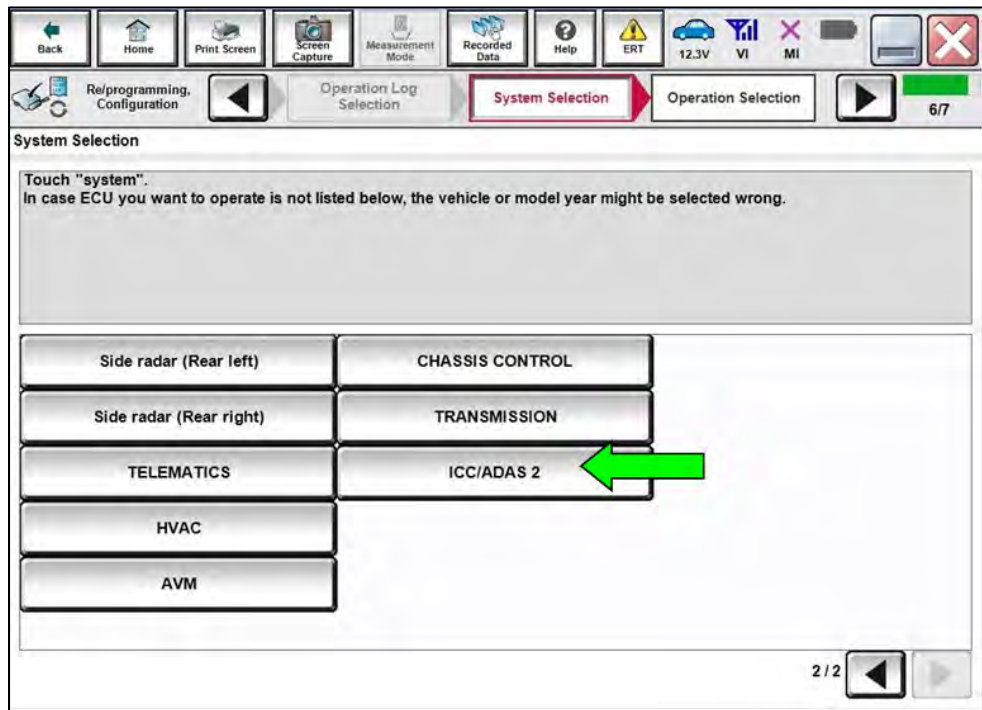


Figure 25



31. Select **After ECU Replacement** under **VEHICLE CONFIGURATION**.

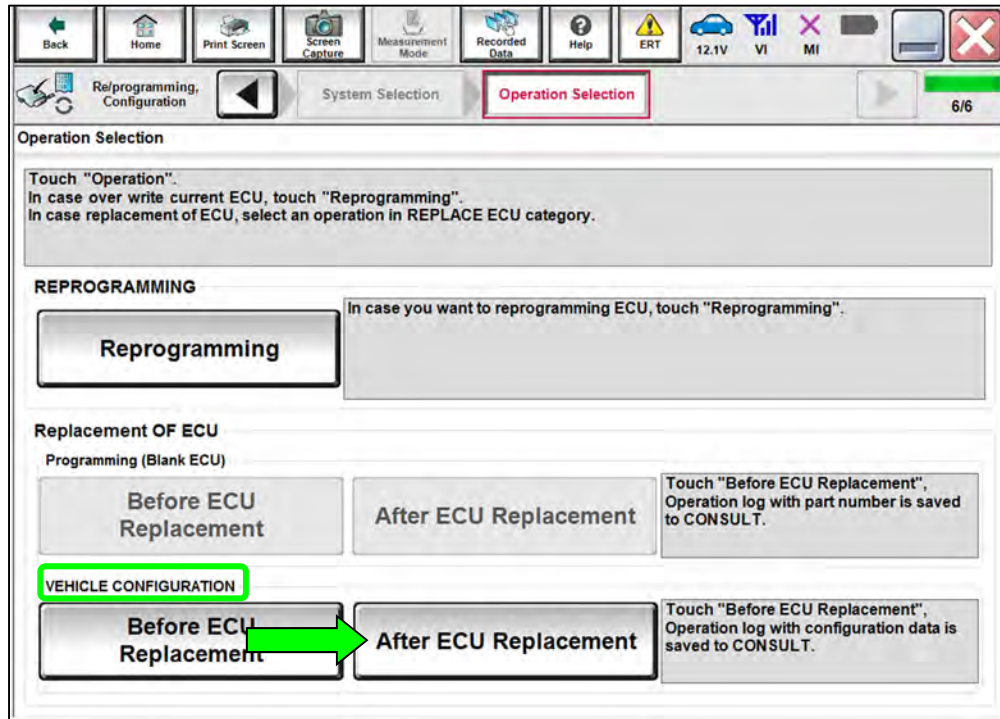


Figure 26

32. Select **Manual selection**.

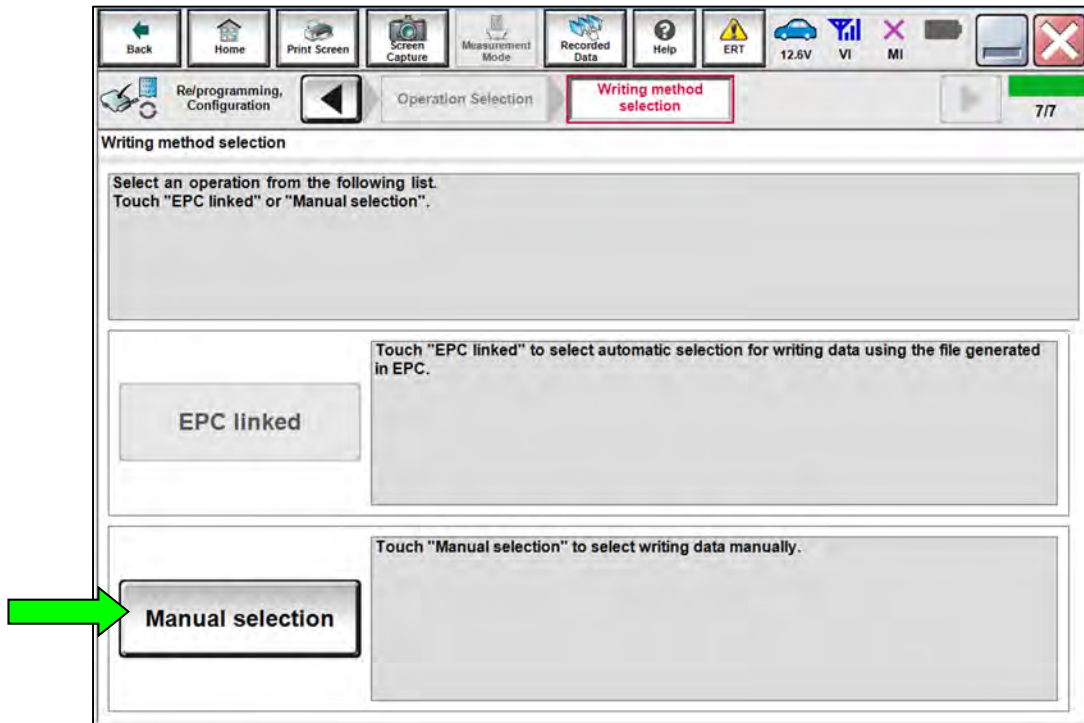


Figure 27

33. Select the applicable **Type ID**, and then select **Next**.
- Refer to the EPC to determine the **OLD CONFIG PART NUMBER (Type ID)** for your VIN.
  - Using both the **OLD CONFIG PART NUMBER (Type ID)** and the updated **ICC/ADAS 2 PART NUMBER** from step 23 on page 13, reference **Table B** on page 19 to determine and select the **NEW CONFIG PART NUMBER (Type ID)**.

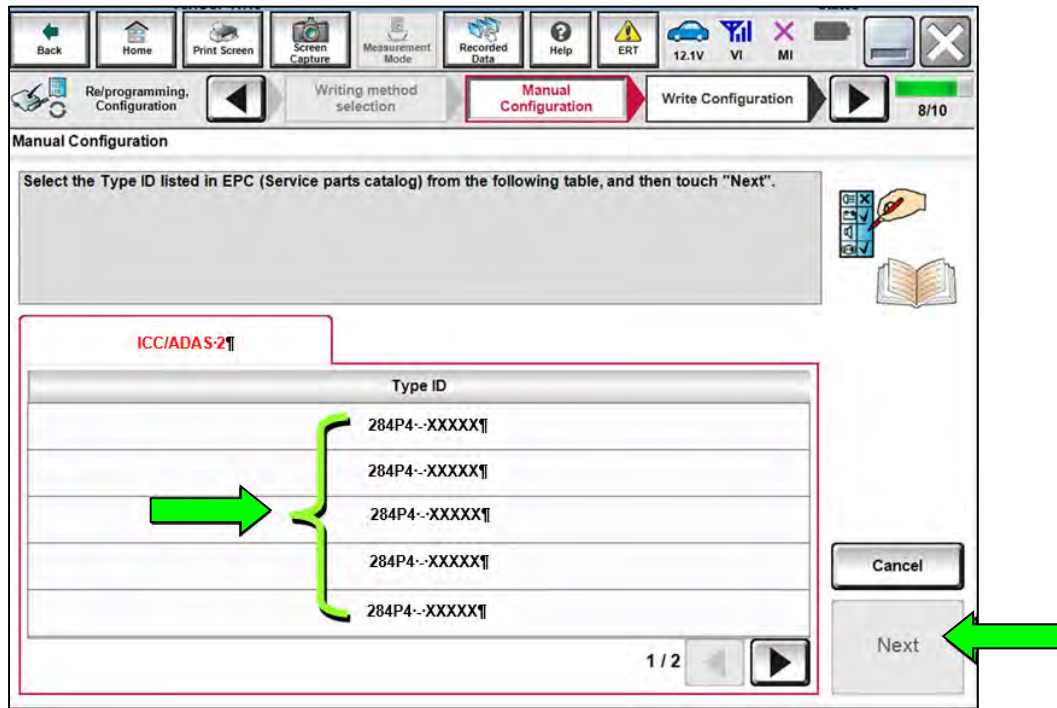


Figure 28

**Table B**

EPC DESCRIPTION	ICC/ADAS PART NUMBER 284P1-		EPC DESCRIPTION	TYPE ID 284P4-	
	OLD	NEW		OLD	NEW (Latest Type ID)
CONT ASSY-WARNING SPEAKER	9BU4B	9BW1A	ROM DATA-WARNING SPEAKER	9BU0A	9BW2A
				9BU0B	9BW2B
				9BU3D	9BW2C
				9BU3E	9BW2D
	9BU3C	9BW1B		9BU1A	9BW2E
				9BU1B	9BW3A
				9BU2D	9BW3B
				9BU2E	9BW3C
	9BU4E	9BW1C		9BU3B	9BW3D
				9BU3A	9BW3E
				9BU2C	9BW4A
	9BU3A	9BW1D		9BU3C	9BW4B
	9BU4D	9BW1E		9BU2A	9BW4C
	9BV3B	9BV4B		9BU2B	9BW4D
				9BY4B	9BY6D
				9BY4C	9BY6E
	9BV3D	9BV4D		9BY5D	9BY8A
				9BY5E	9BY8B
9BV3C	9BV4C	9BY5A	9BY7C		
		9BY4D	9BY7A		
		9BY4E	9BY7B		
9BV3E	9BV4E	9BY5C	9BY7E		
		9BY6A	9BY8C		
		9BY5B	9BY7D		

34. Select **OK**.

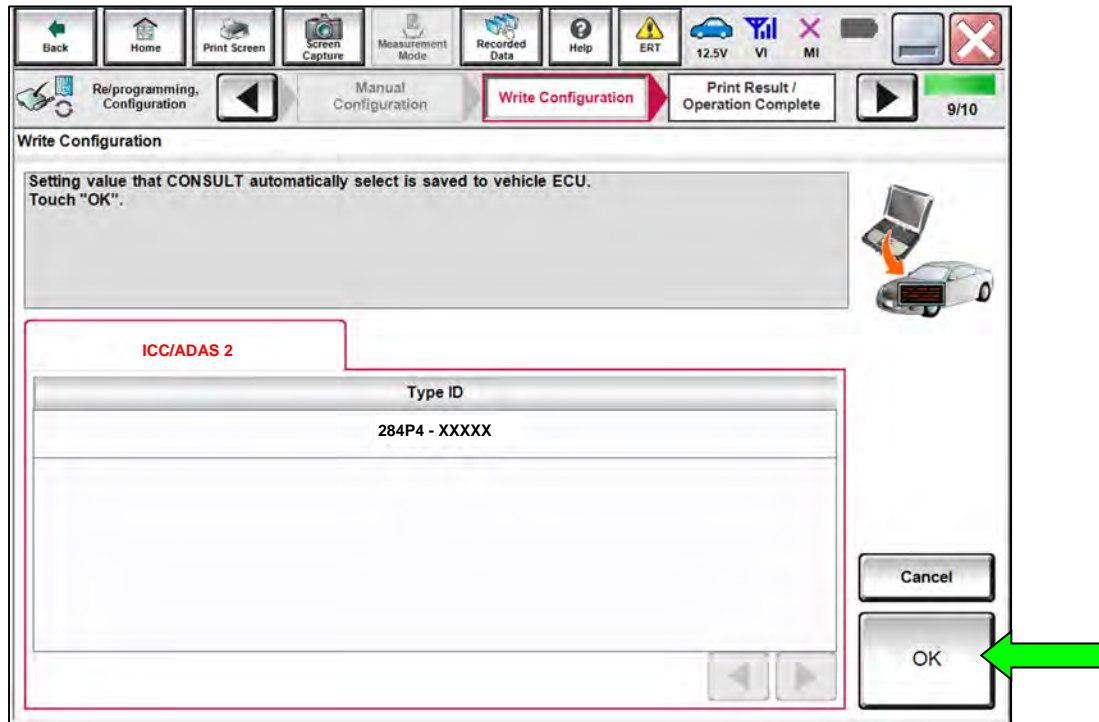


Figure 29

35. Select **End**.

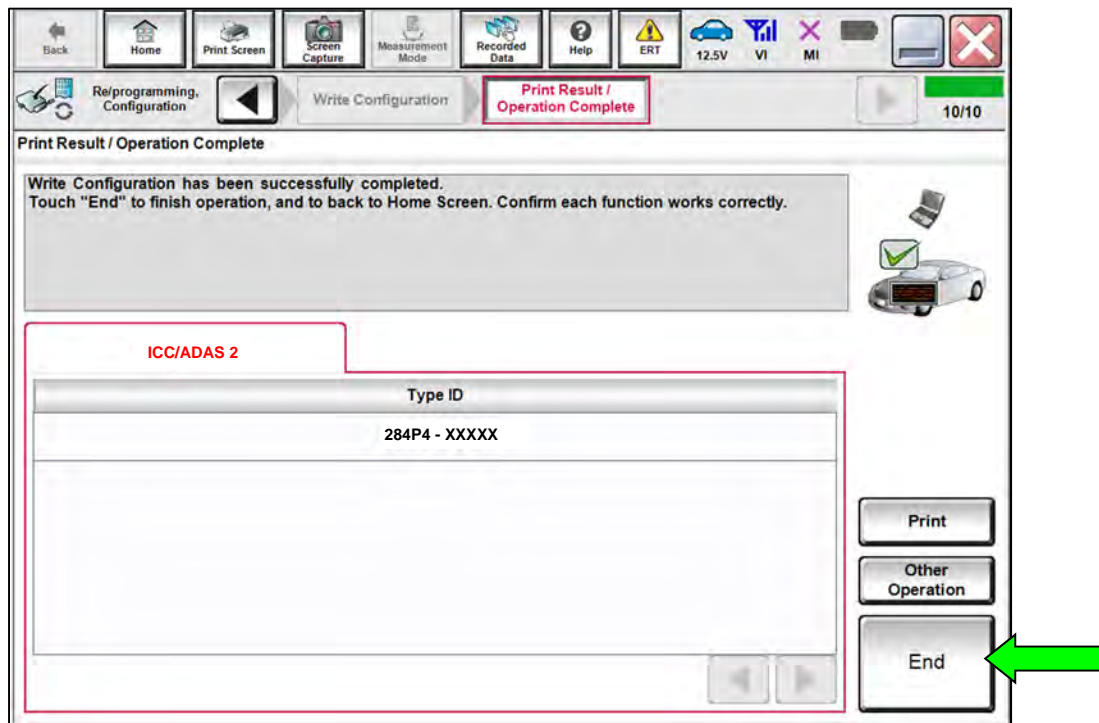


Figure 30

36. Select **Home** (screen not shown).

## Erase DTCs

37. Select **Diagnosis (All Systems)**.

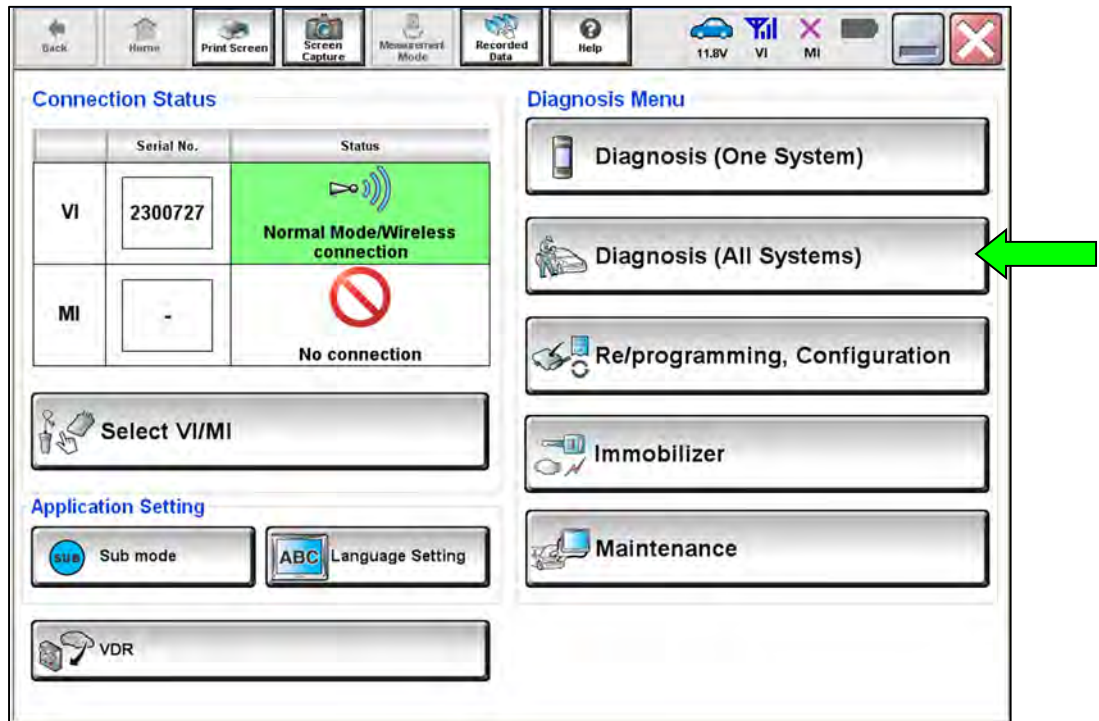


Figure 31

38. Select **ERASE**.

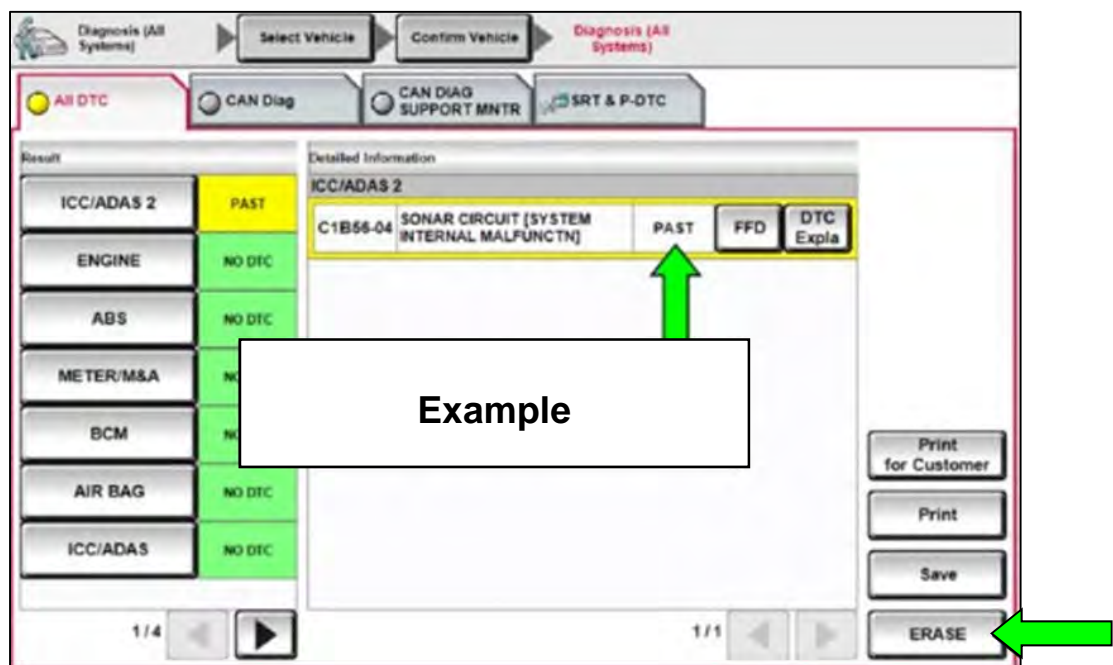


Figure 32

## CLAIMS INFORMATION

Submit a Primary Part (PP) type line claim using the following claims coding:

DESCRIPTION	PFP	OP CODE	SYM	DIA	FRT
Preform Software Check	(1)	RXE4AA	ZE	32	0.3

OR

DESCRIPTION	PFP	OP CODE	SYM	DIA	FRT
Preform Software Check and Reprogram ICC/ADAS	(1)	RXE5AA	ZE	32	0.7

- (1) Refer to the electronic parts catalog and use the Warning Speaker Control Assembly (284P1-\*\*\*\*\*) part number as the Primary Failed Part (PFP).

**HINT:** FRT allows adequate time to access DTC codes. No other diagnostic procedures subsequently required. Do NOT claim any Diagnostic Op Codes with this claim.

## AMENDMENT HISTORY

PUBLISHED DATE	REFERENCE	DESCRIPTION
January 18, 2024	NTB24-005	Original bulletin published