



VOLUNTARY SERVICE CAMPAIGN

Classification: EL24-001	Reference: NTB24-003	Date: January 17, 2024
-----------------------------	-------------------------	---------------------------

VOLUNTARY SERVICE CAMPAIGN 2021-2023 ROGUE; IPDM CONFIGURATION

CAMPAIGN ID #: P3A28
APPLIED VEHICLES: 2021-2023 Rogue (T33)

**Check Service COMM or Dealer Business Systems (DBS)
National Service History to confirm campaign eligibility.**

INTRODUCTION

Nissan is conducting this voluntary service campaign on certain specific model year 2021-2023 Rogue vehicles to reconfigure the IPDM settings for electric energy management. This service will be performed at no charge to the customer for parts or labor.

IDENTIFICATION NUMBER

Nissan has assigned identification number P3A28 to this campaign. This number must appear on all communication and documentation of any nature dealing with this campaign.

DEALER RESPONSIBILITY

Dealers are to repair vehicles falling within range of this campaign that enter the service department. This includes vehicles purchased from private parties, vehicles presented by transient (tourists) owners, and vehicles in a dealer's inventory.

Bulletins are intended for use by qualified technicians, not 'do-it-yourselfers'. Qualified technicians are properly trained individuals who have the equipment, tools, safety instruction, and know-how to do a job properly and safely. **NOTE:** If you believe that a described condition may apply to a particular vehicle, DO NOT assume that it does. See your Nissan dealer to determine if this applies to your vehicle.

SERVICE PROCEDURE

IMPORTANT: Before starting, make sure:

- ASIST on the CONSULT PC has been synchronized (updated) to the current date.
- All CONSULT-III plus software updates (if any) have been installed.
 - Updated configuration may not install correctly if the latest C-III plus software is not installed.

IPDM Configuration

1. Connect a battery maintainer or smart charger, set to reflash mode or a similar setting, to the vehicle battery.
2. Confirm that the CONSULT PC is connected to Wi-Fi.
3. Connect the Vehicle Interface (VI) to the vehicle.
4. Turn the ignition ON with the engine OFF.
5. Turn OFF all vehicle electrical loads such as exterior lights, interior lights, HVAC, blower, rear defogger, audio, NAVI, seat heater, steering wheel heater, etc.
6. Turn the hazard warning lamps ON and leave them ON for the duration of the procedure.
7. Start CONSULT-III plus on the CONSULT PC.
8. If prompted, select **USA/CANADA Dealers** from the drop-down menu, and then select **OK**.
9. Login using your NNAnet credentials.

IMPORTANT: If not prompted to enter your username and password, the CONSULT PC may not be connected to Wi-Fi. Close C-III plus, confirm the CONSULT PC is connected to Wi-Fi, and then reopen C-III plus.

10. Wait for the VI to be recognized.
 - The serial number will be displayed when the VI is recognized.
11. Select **Re/programming, Configuration**.

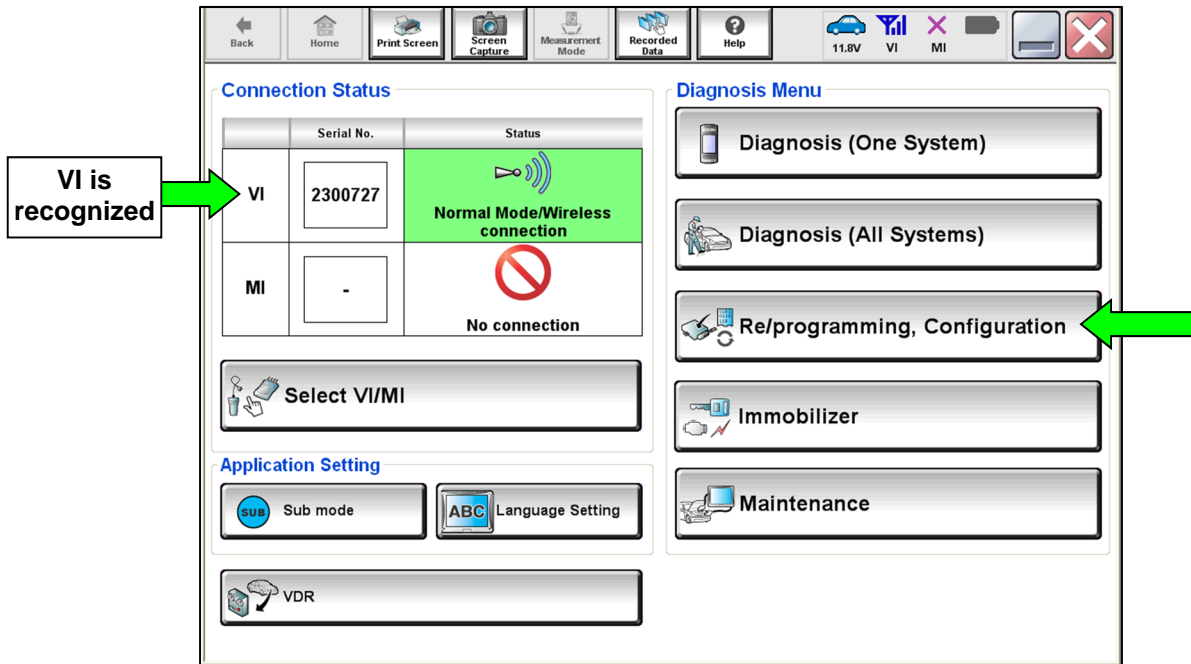


Figure 1

12. Use the arrows (if needed) to view and read all precautions.
13. Check the box confirming the precautions have been read.
14. Select **Next**.

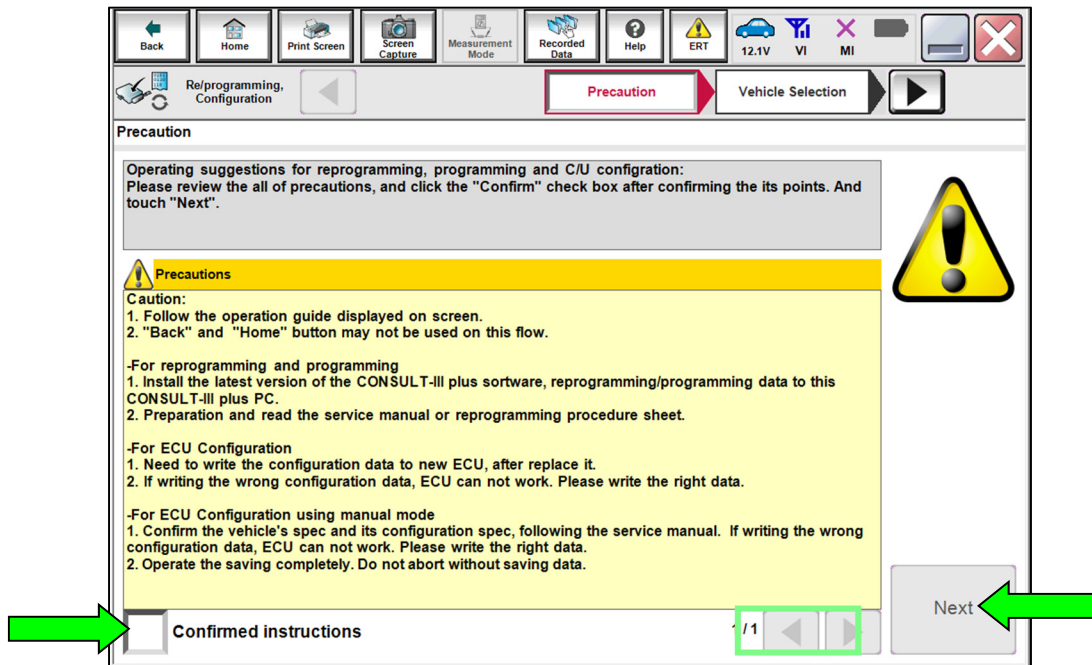


Figure 2

15. Select **Automatic Selection(VIN)**, and then select **Detect Vehicle**.

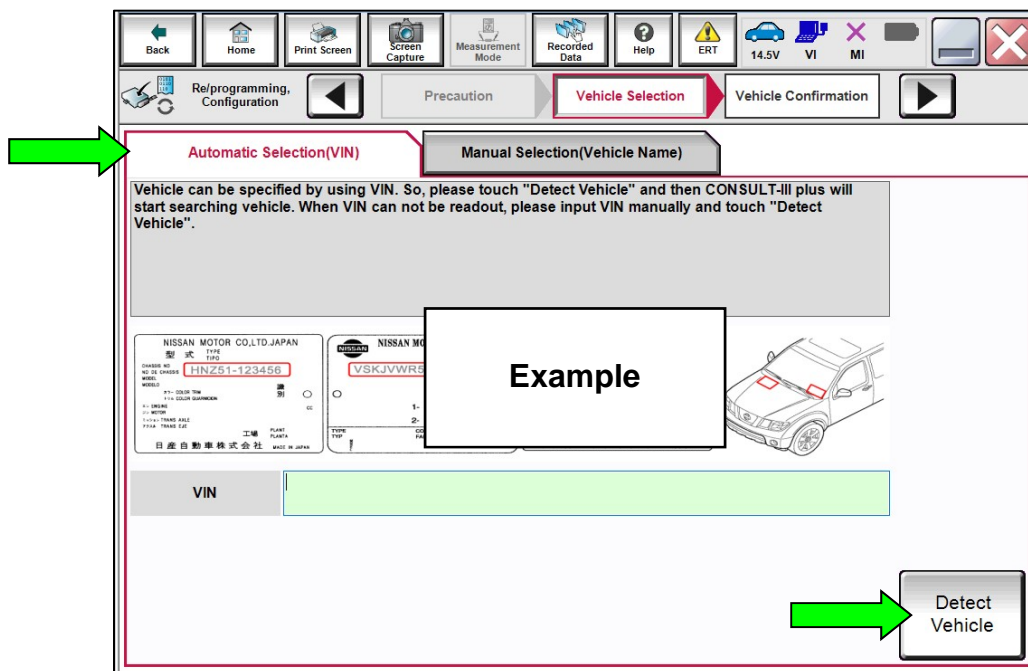


Figure 3

- Make sure **VIN or Chassis #**, **Vehicle Name**, and **Model Year** are correct for the vehicle you are working on, and then select **Confirm**.

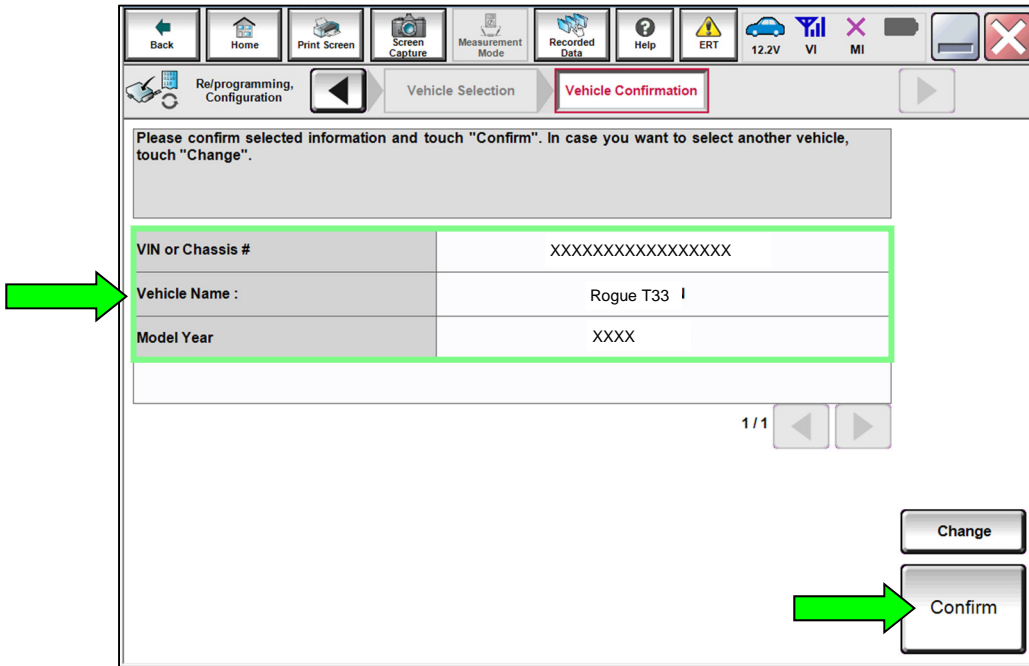


Figure 4

- Verify the **VIN** is correct for the vehicle you are working on, and then select **Confirm**.

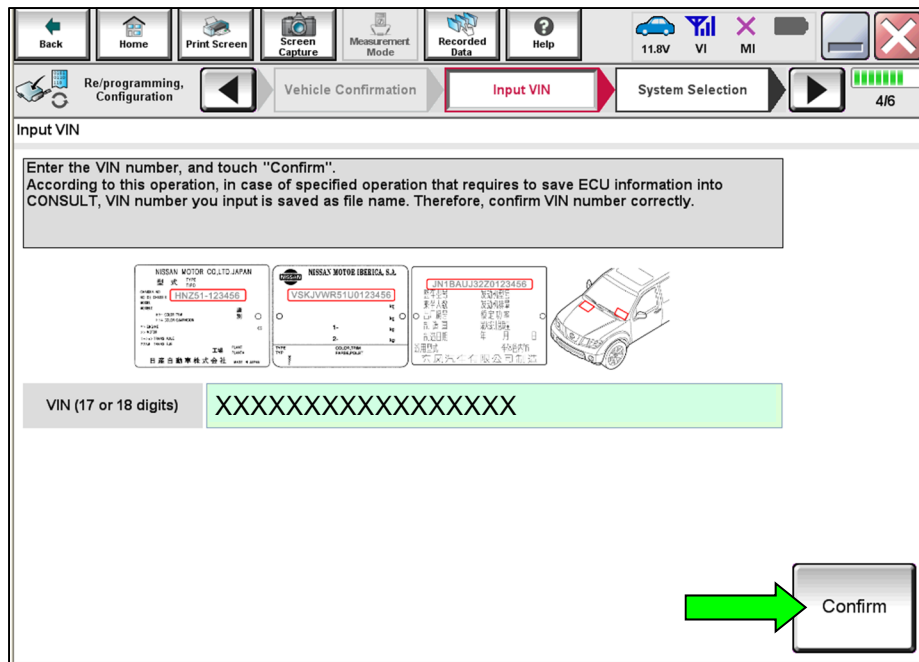


Figure 5

18. Locate and select **IPDM E/R**.

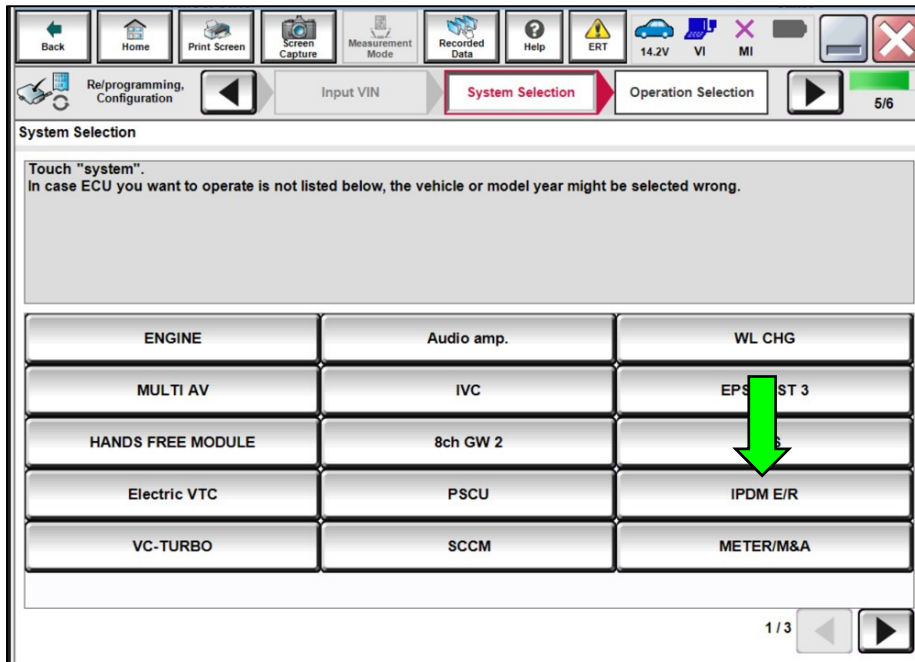


Figure 6

19. Select **Configuration**.

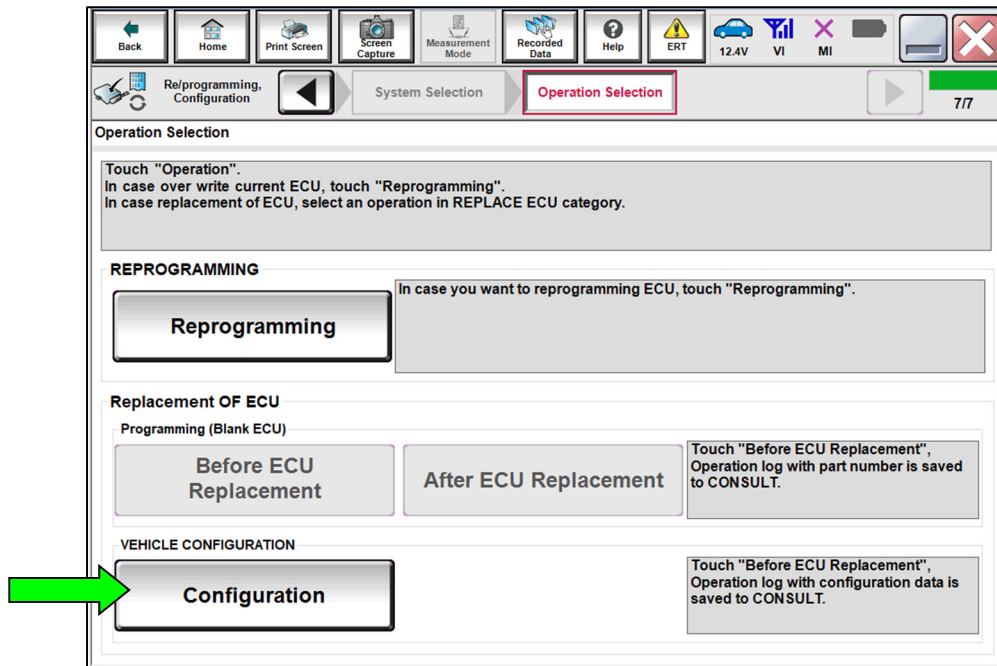


Figure 7

20. Select **START**.

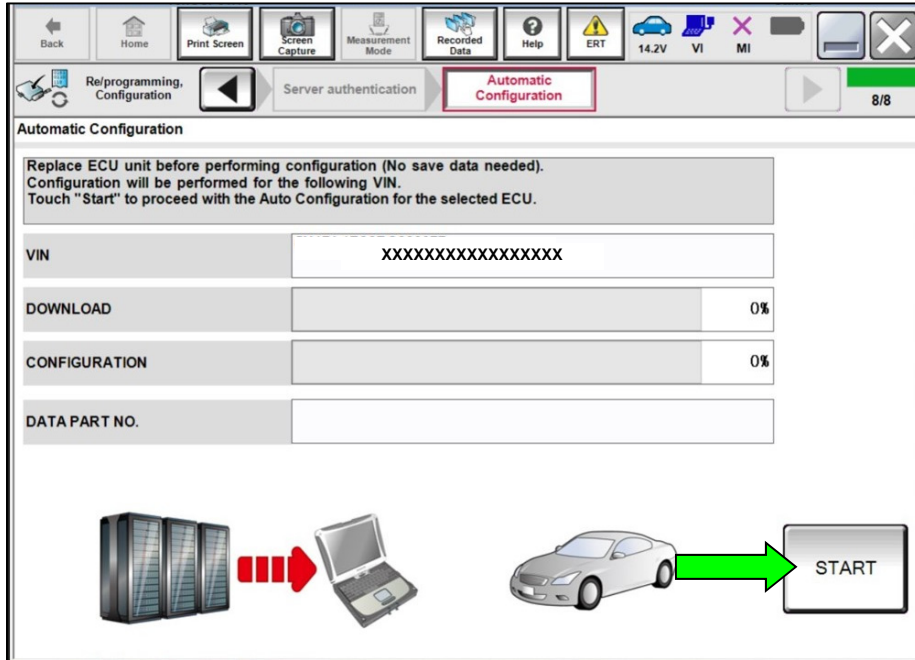


Figure 8

21. Allow the configuration to download to the IPDM.

- The configuration will take approximately 3 minutes to complete.

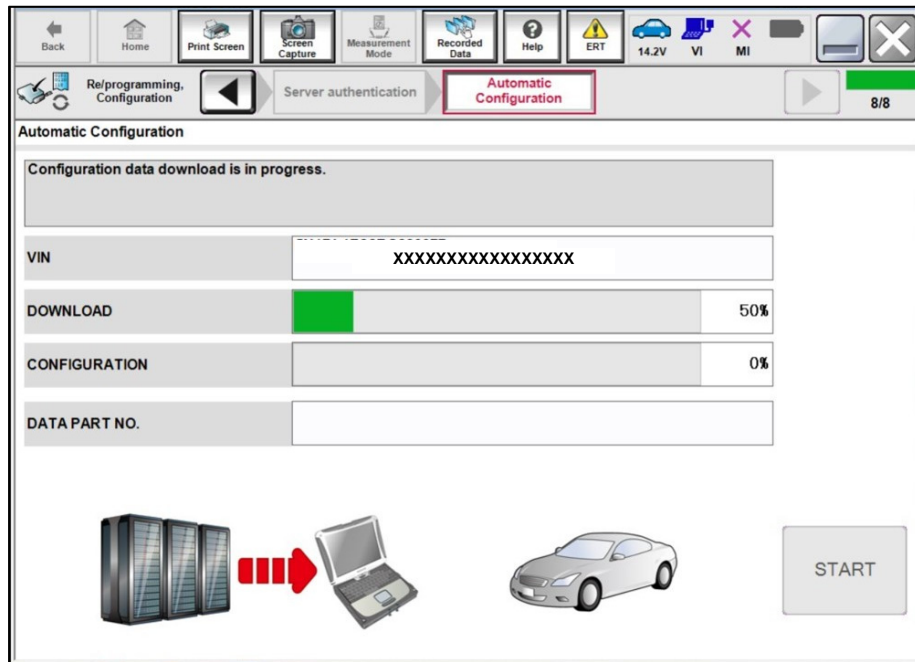


Figure 9

22. When the screen in Figure 10 displays, the configuration is complete.
- After the configuration is complete, the configuration part number will display in the **DATA PART NO.** field.
 - Select **Print Screen** at the top of the screen and attach the results to the repair order.
 - If **DATA PART NO.** displays “0000000000” after configuration, make sure C-III plus has been updated to the latest level and reconfigure the IPDM/ER.

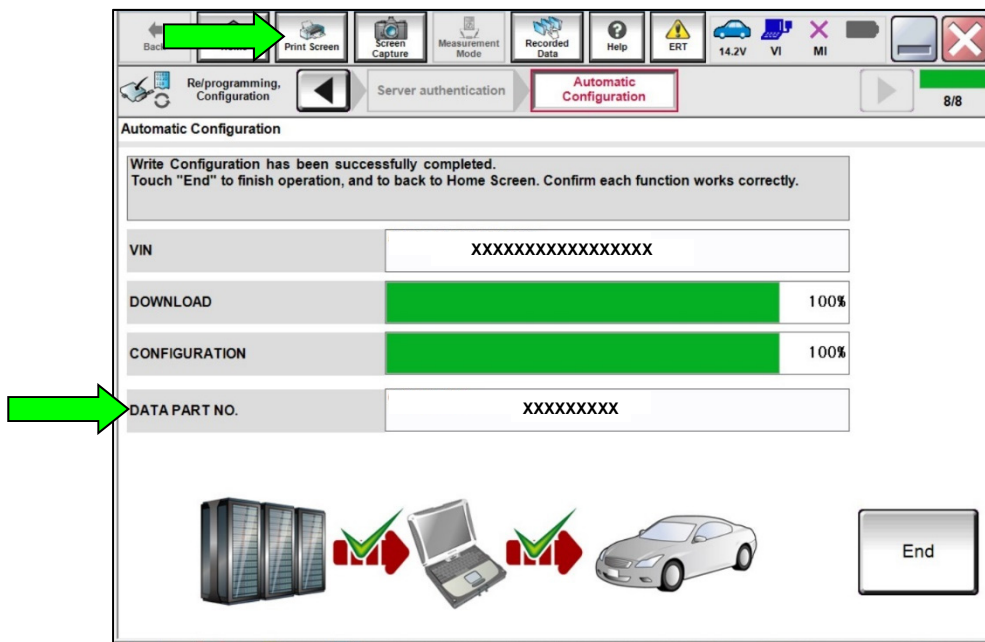


Figure 10

23. Select **End** to return to the home screen.

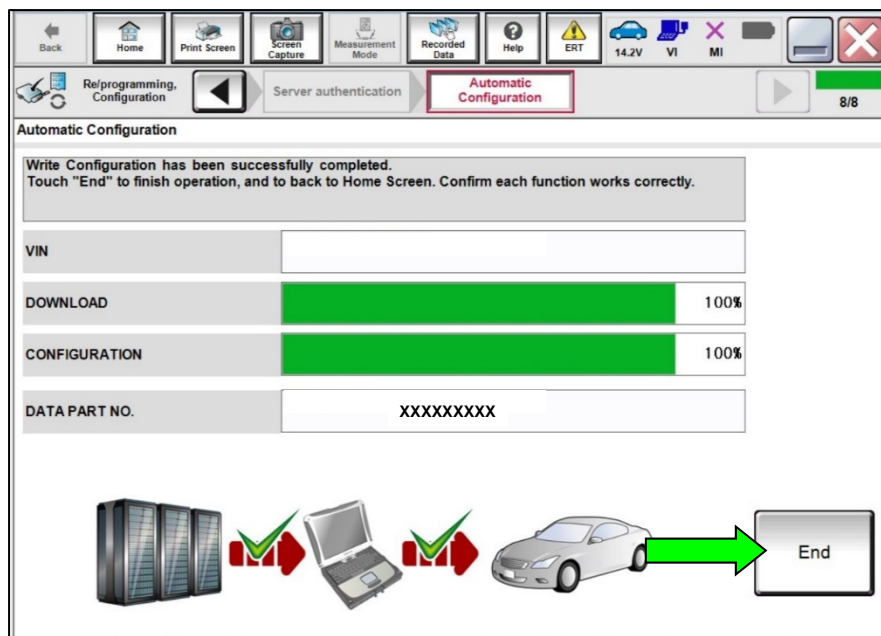


Figure 11

24. Close C-III plus and disconnect the VI.
25. Turn the vehicle OFF.
26. Turn the hazard warning lamps OFF.
27. Turn OFF the battery maintainer or smart charger and disconnect it from the vehicle.
28. Close the hood.

CLAIMS INFORMATION

Submit a “CM” line claim using the following claims coding:

CAMPAIGN (“CM”) ID	DESCRIPTION	OP CODE	FRT
P3A28	Reconfigure IPDM	P3A280	0.4

AMENDMENT HISTORY

PUBLISHED DATE	REFERENCE	DESCRIPTION
January 17, 2024	NTB24-003	Original bulletin published

