



VOLUNTARY SERVICE CAMPAIGN

Classification: FA23-001	Reference: NTB24-001	Date: January 4, 2024
-----------------------------	-------------------------	--------------------------

VOLUNTARY SERVICE CAMPAIGN 2023 KICKS; FRONT WHEEL HUB

CAMPAIGN ID #: PMA29
APPLIED VEHICLES: 2023 Kicks (P15)

**Check Service COMM or Dealer Business Systems (DBS)
National Service History to confirm campaign eligibility.**

INTRODUCTION

Nissan is conducting this voluntary service campaign on certain specific model year 2023 Kicks vehicles to replace both Front Wheel Hubs. This service will be performed at no charge to the customer for parts or labor.

IDENTIFICATION NUMBER

Nissan has assigned identification number PMA29 to this campaign. This number must appear on all communication and documentation of any nature dealing with this campaign.

DEALER RESPONSIBILITY

Dealers are to repair vehicles falling within range of this campaign that enter the service department. This includes vehicles purchased from private parties, vehicles presented by transient (tourists) owners, and vehicles in a dealer’s inventory.

Bulletins are intended for use by qualified technicians, not 'do-it-yourselfers'. Qualified technicians are properly trained individuals who have the equipment, tools, safety instruction, and know-how to do a job properly and safely. **NOTE:** If you believe that a described condition may apply to a particular vehicle, DO NOT assume that it does. See your Nissan dealer to determine if this applies to your vehicle.

SERVICE PROCEDURE

IMPORTANT: Follow all cautions, warnings, and notes in the ESM during this procedure.

HINT: The new Front Wheel Hubs come with new wheel studs already installed.

1. Place the vehicle on a lift and raise to a suitable height.
2. Replace both Front Wheel Hubs.
 - Refer to the ESM: **TRANSMISSION & DRIVELINE > FRONT AXLE > REMOVAL AND INSTALLATION > FRONT WHEEL HUB > WITHOUT STAKED NUT > Removal and Installation**
 - Replace all one-time-use parts per the ESM

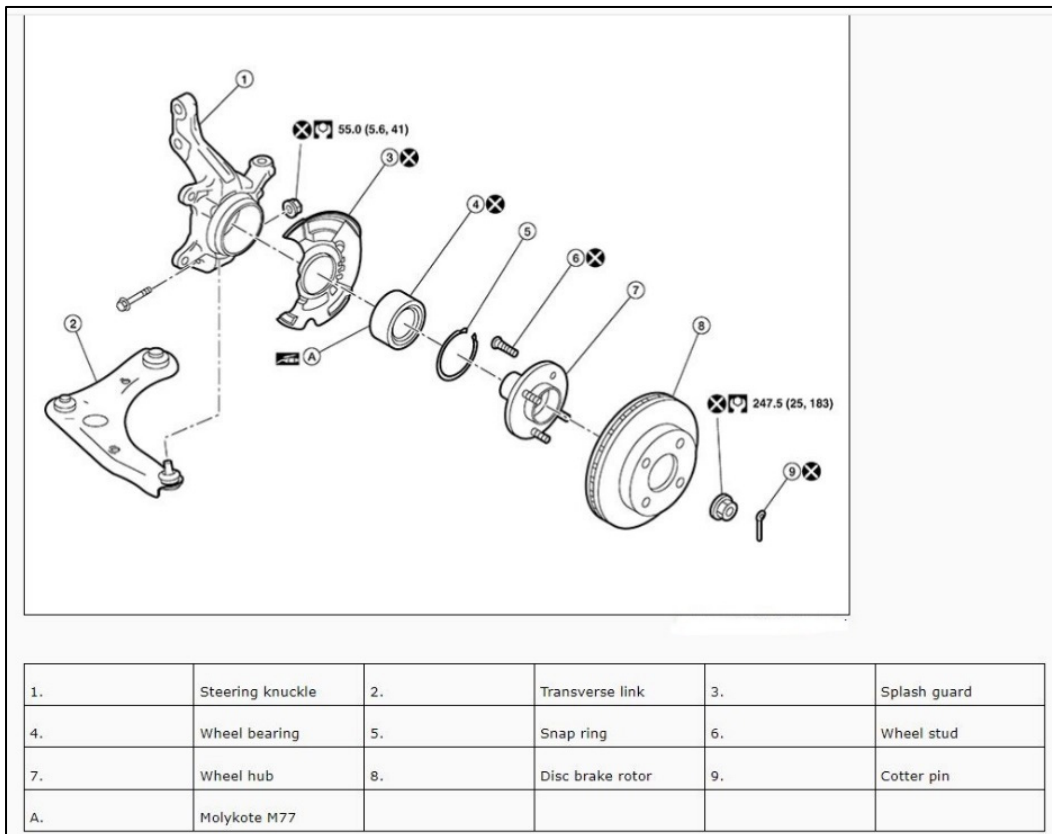


Figure 1

The following one-time-use nuts **MUST** be replaced and torqued to the ESM specification listed below:

- Lower Strut Nut: 165 N•m (17 kg-m, **122 ft-lb**)
- Knuckle to Transverse Link Nut: 55 N•m (5.6 kg-m, **41 ft-lb**)
- Outer Socket Nut: 34.4 N•m (3.5 kg-m, **25 ft-lb**)
- Front Wheel Hub Lock Nut: 247.5 N•m (25.0 kg-m, **183 ft-lb**)

3. Install the wheel and tire assemblies.
 - Refer to the ESM: **SUSPENSION > ROAD WHEELS & TIRES > REMOVAL AND INSTALLATION > WHEEL AND TIRE > Removal and Installation**
 - Wheel nut torque: 113 N•m (12 kg-m, **83 ft-lb**)

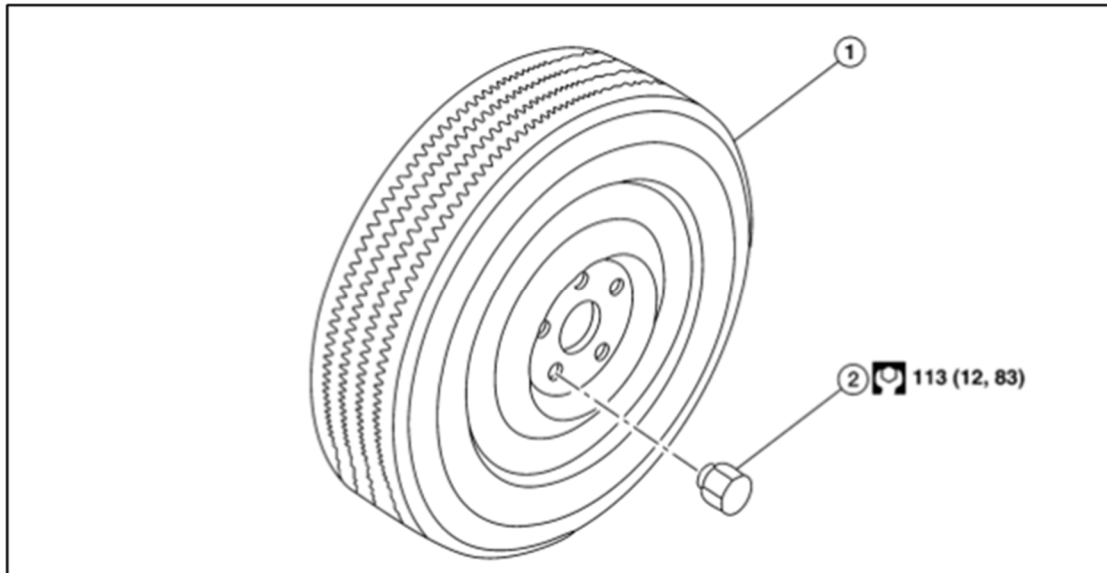


Figure 2

4. Perform wheel alignment.
 - Refer to the ESM: **SUSPENSION > FRONT SUSPENSION > PERIODIC MAINTENANCE > WHEEL ALIGNMENT > Adjustment**
5. Adjust neutral position of the steering angle sensor.
 - Refer to the ESM: **BRAKES > BRAKE CONTROL SYSTEM > VDC/TCS/ABS > BASIC INSPECTION > ADJUSTMENT OF STEERING ANGLE SENSOR NEUTRAL POSITION > Work Procedure**

PARTS INFORMATION

DESCRIPTION	PART NUMBER	QUANTITY
NUT	54588-1HA0C	4
NUT	01223-00231	4
PLATE – BAFFLE (LH) Splash Shield	D1151-5RBMA	1
PLATE – BAFFLE (RH) Splash Shield	D1161-5RBMA	1
NUT – LOCK, FRONT WHEEL BEARING	40262-4M400	2
PIN – COTTER	40073-0L700	2
BEARING ASSY – FRONT WHEEL	40210-5RB0A	2
RING – SNAP	40214-AX000	2
HUB ASSY – ROAD WHEEL, FRONT	40202-AX000	2

CLAIMS INFORMATION

Submit a “CM” line claim using the following claims coding:

CAMPAIGN (“CM”) ID	DESCRIPTION	OP CODE	FRT
PMA29	Replace Both Right And Left Front Wheel Hub Assemblies	PMA290	2.2 (1)

(1) Labor operation time includes a 4-wheel alignment.

AMENDMENT HISTORY

PUBLISHED DATE	REFERENCE	DESCRIPTION
January 4, 2024	NTB24-001	Original bulletin published