

**Transmission Symptom - Oil Leakages on Transfer Box (SY 163/23)**

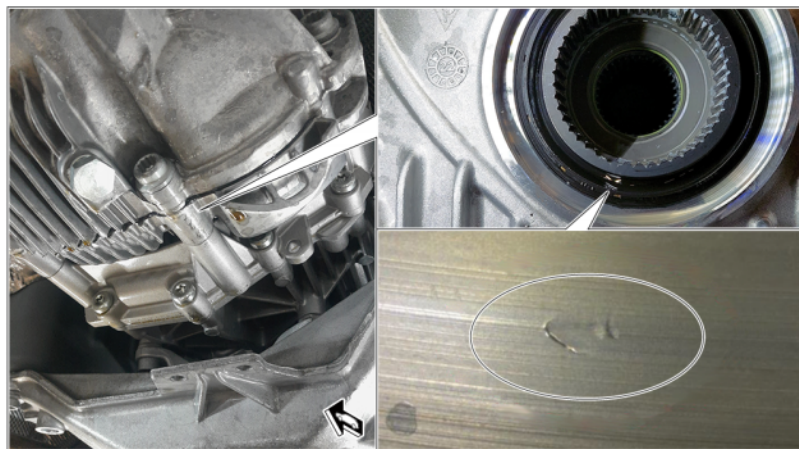
Model Line: **Macan (95B)**

Model Year: **2023**

Concerns: **Transfer box**

Symptom: Oil leakage is found on the vehicle in the area of the transfer box and at the transition to the double clutch transmission.

Cause: A temporary manufacturing error might have caused mechanical damage to the transmission input shaft in the area of the running track of the radial shaft seal ⇒ *Oil leakage on the transfer box*. This damage can lead to a leak on the radial shaft sealing ring of the transmission input shaft and thus to oil leakage on the transfer box.



*Oil leakage on the transfer box*

Remedial Action: If an oil leakage is detected in the area of the transmission input shaft of the transfer box, check the production date of the vehicle and replace the transfer box depending on the test result. Replacing the radial shaft sealing ring is not sufficient for a damaged transmission input shaft.



**Information**

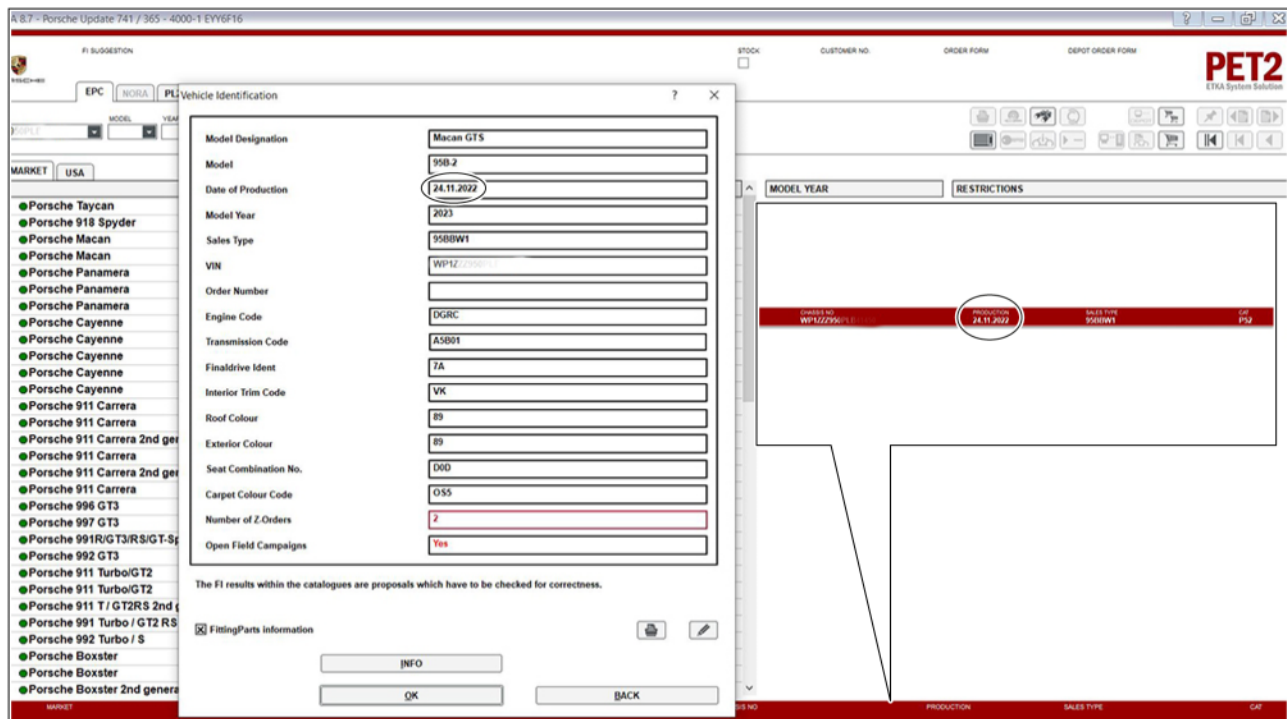
This default value only applies to vehicles from the production period specified below.

## Check production period

Work Procedure: 1 Check vehicle production period.

The procedure for this can be as follows: Enter vehicle ID No. in the **Porsche spare part catalogue (PET2)** and confirm with **"Enter"**. Then a pop-up window (vehicle information) opens from which the production date can be read ⇒ *Production date PET2*.

In addition, after confirming with **"OK"**, the production date is displayed in the lower edge of the screen ⇒ *Production date PET2*.



*Production date PET2*

	Assessment	Action
(✓)	Production date is between <b>October 20, 2022 – December 22, 2022</b> .	Replace transfer gear. Continue with ⇒ <i>Technical Information 'Replace transfer box'</i> . For required parts, see ⇒ <i>Technical Information 'Required parts as needed'</i> .
(✗)	Production date is <b>not</b> between <b>October 20, 2022 – December 22, 2022</b> .	Vehicle was produced outside the period to which the fault pattern described here applies. Locate and eliminate oil leakage elsewhere.

**Required parts, if necessary**

Parts Info:	<b>Part No.</b>	<b>Designation – Location of use</b>	<b>Number</b>
	<b>For vehicles with the following equipment:</b>		
	• 4-cylinder Turbo engine in-line ( <b>M-No. T2B / T2G</b> )		
	95B341010SX	⇒ Transfer box	1 piece
	<b>or</b>		
	<b>For vehicles with the following equipment:</b>		
	• 6-cylinder Biturbo engine in V arrangement ( <b>M-No. TV8 / T9I / D1C / D29</b> )		
	95B341010TX	⇒ Transfer box	1 piece
	PAF106259	⇒ Collared cheese head bolt with multiple-tooth head, M10 x 70 – Transfer box to double-clutch transmission	4 piece(s)
	PAF908322	⇒ Double-collar screw M10 x 75 – Transfer box to double-clutch transmission	1 piece
	PAB111220A	⇒ Clamping sleeve, 65 x 88 mm – Exhaust system	1 to 2 piece(s)
	PAF107722	⇒ Hose clamp 36.1 x 9 x 0.6 – Cardan shaft to transfer box	1 piece
	PAF108524	⇒ Internal serration screw, M10 x 50 – Cardan shaft to final drive	6 piece(s)
	95534919121	⇒ Plate – Cardan shaft to final drive	3 piece(s)
	N 91201102	⇒ Collared cheese head bolt with multiple-tooth head, M10 x 25 – Front tunnel support	8 piece(s)

**Required tools**

Tools:	<ul style="list-style-type: none"> <li>• <b>9768 - 9768 - Electronic torque wrench, 2–100 Nm (1.5–74 ftlb.)</b></li> <li>• <b>V.A.G 1275A - Hose clip pliers</b></li> <li>• <b>VAS 6931 - Transmission and gearbox jack</b></li> </ul>
--------	--

- **P90999 - PIWIS Tester 4**
- Battery charger with a current rating of **at least 90 A**, e.g. **VAS 5908 - battery charger 90 A**. For further information about the battery chargers to be used, see the corresponding Workshop Manual.  
⇒ *Workshop Manual '270689 Charging 12-volt lithium-ion vehicle electrical system battery'*

### Replacing transfer box

Work Procedure: 1 Replace transfer gear.

For procedure, see: ⇒ *Workshop Manual '396555 Replacing transfer box'*

### Labor position and PCSS encryption

Labor position:

APOS	Labor operation	I No.
26011920	Removing and installing exhaust system	
26011940	Removing and installing exhaust system	
26011950	Removing and installing exhaust system	
26011970	Removing and installing exhaust system	
26011990	Removing and installing exhaust system	
39651950	Removing and installing transfer box	
39655550	Replacing transfer box	

<b>Location (FES5)</b>	39650	Transfer box
<b>Damage type (SA4)</b>	5043	oil loss

**Important Notice:** Technical Bulletins issued by Porsche Cars North America, Inc. are intended only for use by professional automotive technicians who have attended Porsche service training courses. They are written to inform those technicians of conditions that may occur on some Porsche vehicles, or to provide information that could assist in the proper servicing of a vehicle. Porsche special tools may be necessary in order to perform certain operations identified in these bulletins. Use of tools and procedures other than those Porsche recommends in these bulletins may be detrimental to the safe operation of your vehicle, and may endanger the people working on it. Properly trained Porsche technicians have the equipment, tools, safety instructions, and know-how to do the job properly and safely. Part numbers listed in these bulletins are for reference only. The work procedures updated electronically in the Porsche PIWIS diagnostic and testing device take precedence and, in the event of a discrepancy, the work procedures in the PIWIS Tester are the ones that must be followed.

© 2024 Porsche Cars North America, Inc.