



Countries: UNITED STATES Document ID: IK0800666  
 Availability: Body Builder, NotSIR Revision: 0  
 Major System: Electrical Created: 1/25/2024  
 Current Language: English Last Modified: 1/30/2024  
 Other Languages: NONE Author: Eric Waller  
 Viewed: 18

[Less Info](#)

Hide Details

Coding Information

<b>Copy Link</b> 	<b>Copy Relative Link</b> 	<b>Bookmark</b>  <a href="#">View My Bookmarks</a>	<b>Add to Favorites</b> 	<b>Print</b> 	<b>Provide Feedback</b> 	<b>Helpful</b>  0	<b>Not Helpful</b>  0
----------------------	-------------------------------	--	-----------------------------	------------------	-----------------------------	-------------------------	-----------------------------

Title: 24A02 EFIX for addressing BCM programming for no FLR icons/messages in cluster

Applies To: HV, HX, MV, LT, RH

### CHANGE LOG

Please refer to the change log text box below for recent changes to this article:

01/25/23 Initial article release.

### DESCRIPTION

This document will guide the user to identify and apply an E-Fix using Diamond Logic Builder when available. It is not recommended to update the Body Control Module (BCM) proactively. The Campaign tab may have an E-Fix to address specific issues. If an E-Fix is available, it should be applied and programmed to the Body Control Module.

### SYMPTOMS

DTC/Light	Description
N/A	N/A

### SPECIAL TOOLS / SOFTWARE

Tool Description	Tool Number	Comments	Instructions
Diamond Logic® Builder	N/A	EZ-Tech Software	N/A
Battery Charger 55 Amp	PSC550CC	N/A	N/A

### SERVICE PARTS INFORMATION

Kit Description	Part Number	Qty. Required	Notes
N/A	N/A	N/A	N/A

### DIAGNOSTIC STEPS

N/A

### REPAIR STEPS

**WARNING!** To prevent property damage, personal injury, and / or death, park vehicle on a hard, flat surface, turn the engine off, set the parking brake, and install wheel chocks to prevent the vehicle from moving in either direction.

**WARNING!** To prevent property damage, personal injury, and / or death, if the vehicle must be raised, do not work under the vehicle supported only by jacks. Jacks can slip or fall over.

**WARNING!** To prevent personal injury and / or death, always wear safe eye protection when performing vehicle maintenance.

**WARNING!** To prevent property damage, personal injury, and / or death, keep flames or sparks away from vehicle and do not smoke while servicing the vehicle's batteries. Batteries expel explosive gases.

**WARNING!** To prevent property damage, personal injury, and / or death, remove the ground cable from the negative terminal of the battery box before disconnecting any electrical components. Always connect the ground cable last.

1. Park vehicle on a level surface.
2. Shift transmission into Park or Neutral and set parking brake.
3. Turn ignition to Key OFF position.
4. Install wheel chocks.
5. Connect battery charger / maintainer to vehicle battery.
6. Connect EZ-Tech Using NEXIQ USB-Link or NEXIQ USB-LINK™ 2 interface cables via 9 pin connector.
7. Launch Diamond Logic Builder (DLB) software.

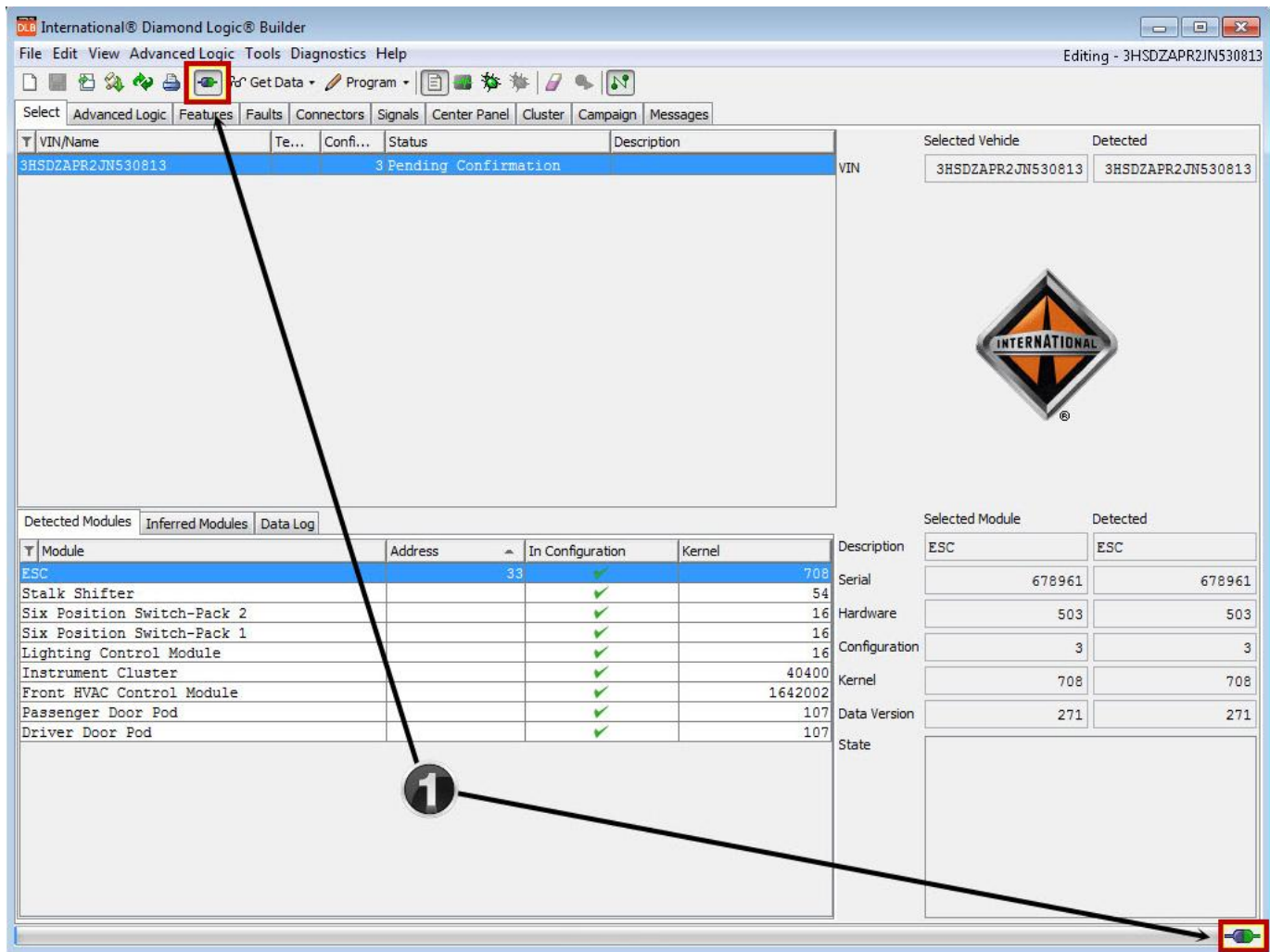


Figure 1: DLB connection  
Item 1: Verify DLB connection to vehicle

8. Connect to the vehicle with DLB (figure 1, item 1).

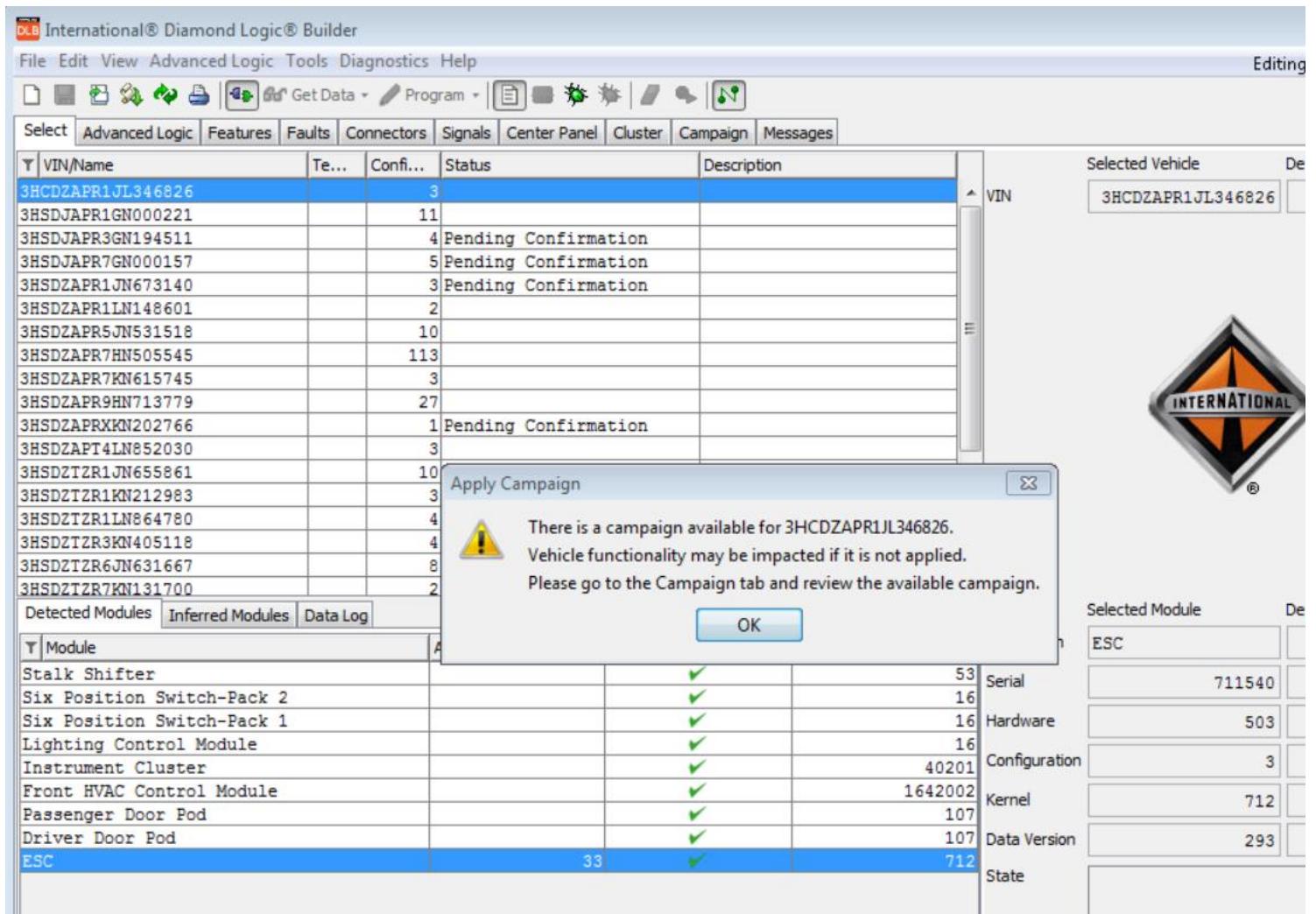


Figure 2: Campaign vin alert

9. Once DLB has been opened under the vin an alert (figure 2) will populate requesting the user to go to the campaign tab and review the available Efix.

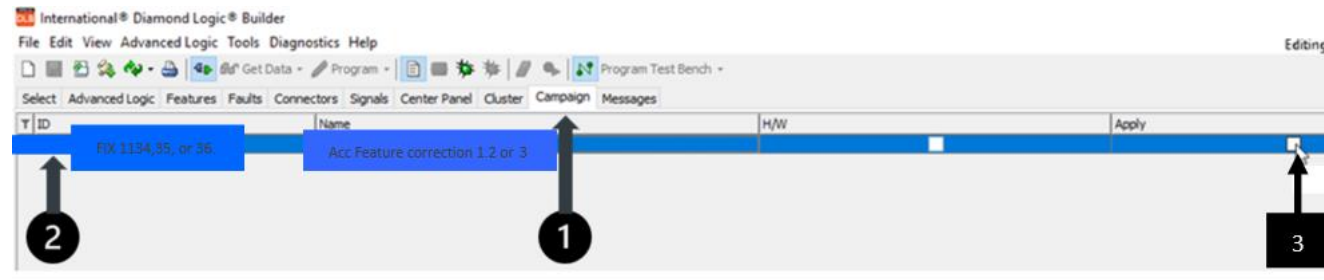


Figure 3: Campaign Tab

- Item 1: Campaign Tab
- Item 2: Efix (Efix ID and name is an example only should read **ACC Feature correction 1,2 or 3**)
- Item 3: Apply check box

10. Navigate to the Campaign Tab in Diamond Logic® Builder.

11. Check for any E-Fix campaigns that should be applied on the vin you have.

**NOTE:**

This is just an example for an Efix. Make sure you review the vin and process the correct Efix if there are multiple Efix's. There are 3 Efix numbers for multiple different vins. Efix numbers are as follows 1134, 1135, and 1136.

12. To apply the Efix click on the box to add check mark.

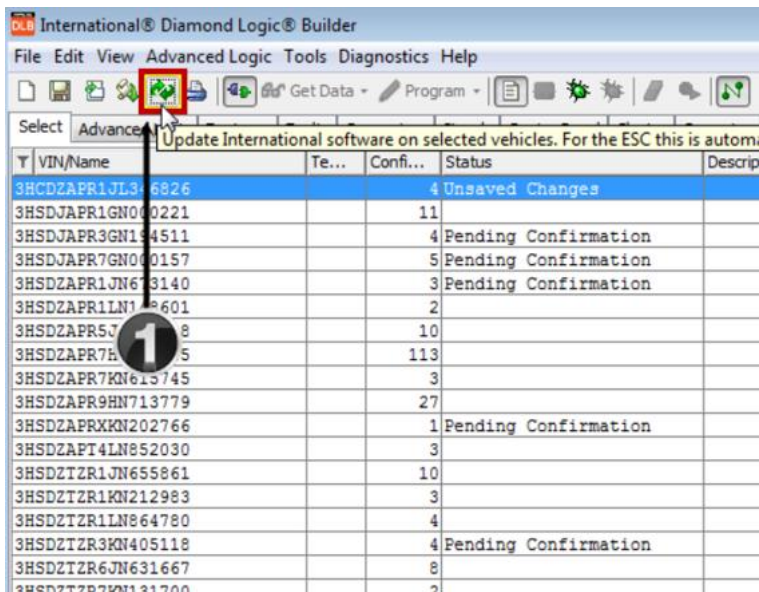


Figure 4: Update software  
Item 1: Update international software button

13. Click on the Update software button (figure 4, item 1).

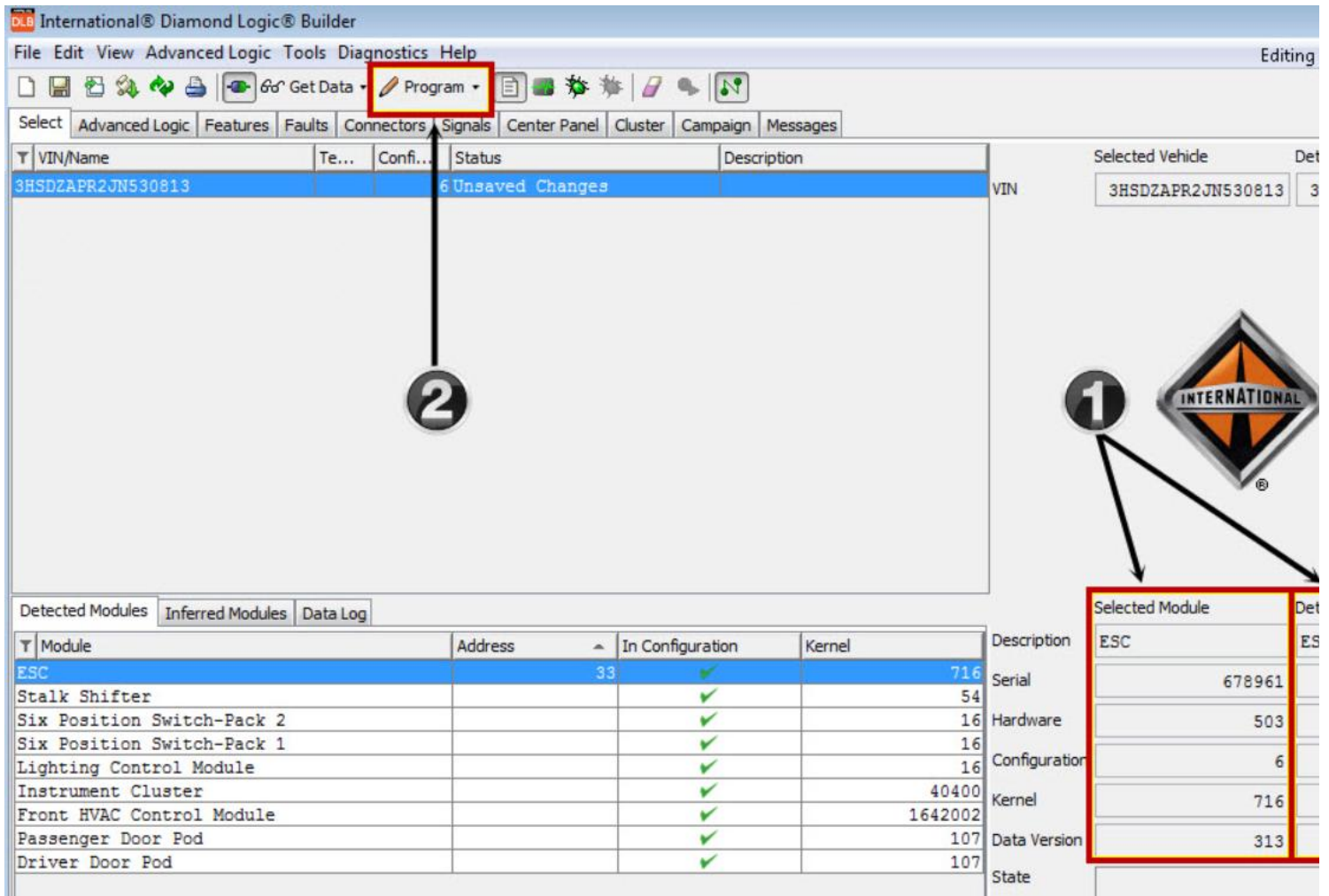


Figure 5: Program screen  
Item 1: Program button  
Item 2: Kernel versions (selected = current, detected = to be updated to)

14. Click on the program button (figure 5, Item 1) to update the ESC and apply the Efix.

15. Verify the Efix has taken by reviewing the kernel (figure 5, Item 2) to see if it has updated.

16. Disconnect EzTech and cable from 9 pin connector.

- 17. Remove wheel chocks
- 18. Return vehicle back to service

**WARRANTY INFORMATION**

Repair	SRT	Hrs
Apply eFIX	A40-24A02-1	0.3

**ADMINISTRATIVE PROCEDURE**

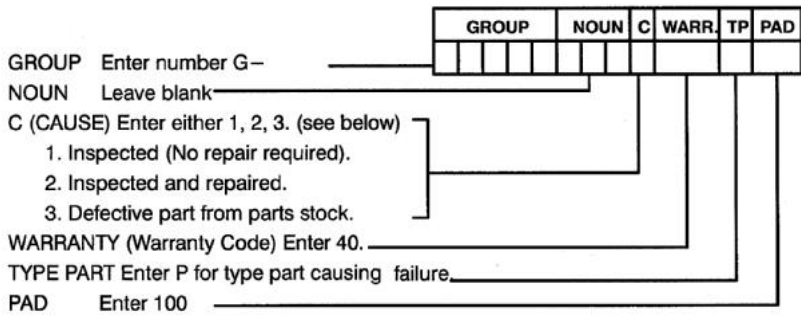
Expense is to be charged to Warranty. Claims are to be submitted in the normal manner, making reference to Proactive Field Change Number.

It is important that the coding be completed properly to assist in processing the warranty claim. Complete instructions will be found in the Warranty Policy Manual, Section 10.

As with all claim submissions, items acquired locally must be submitted in the Other Charges tab. The cost of any bulk items (such as a bag of cable tie straps, roll of wire, barrel of oil, or tube of silicone) should be prorated for the cost of the individual pieces / amount used during each repair.

Sales Policy repairs have a 10% markup on parts

To ensure this important improvement is made in a timely manner, all claims for this Proactive Field Change Number must be submitted within 12 months from the release of this document or within the normal warranty period for the vehicle, if after 12 months from the release date



**If a feedback case is required, please select feedback type as 600/MRC/FSC and case type as feedback. This will ensure the case file goes to the correct correspondents**

**OTHER RESOURCES**

[Master Service Information Site](#)

Hide Details
Feedback Information

Viewed: 17

Helpful: 0

Not Helpful: 0

No Feedback Found