



Technical Service Bulletin

GROUP	NUMBER
CAMPAIGN	24-01-011G
DATE	MODEL(S)
JANUARY 2024	G80 (RG3) G90 (RS4)

SUBJECT:	TRANSFER CASE MOUNTING BOLT CHECK AND FASTEN (SERVICE CAMPAIGN T42G)
-----------------	---

★ IMPORTANT

Dealers must perform this service campaign on all affected vehicles prior to customer retail delivery and whenever an affected vehicle is in the shop for any maintenance or repair.

Access the "Vehicle Information" screen via WEBDCS to identify open campaigns.

Description: Certain 2024MY G80 (RG3) and 2024MY G90 (RS4) vehicles may have a missing mounting bolt on the transfer case assembly. Follow the procedures listed below to inspect, and if necessary, replace the missing bolt.

Applicable Vehicles (Certain):

- 2024MY G80 (RG3) produced from 10/13/2023-10/25/2023
- 2024MY G90 (RS4) produced from 10/13/2023-11/20/2023

Warranty Information:

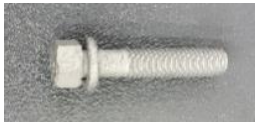
Model	Op. Code	Operation	Op. Time	Causal Part	Nature Code	Cause Code
G80 (RG3) G90 (RS4)	30D160R2	TRANSFER CASE MOUNTING BOLT CHECK	0.3 M/H	11234-10406P	B1B	ZZ7
	30D160R3	TRANSFER CASE BOLT CHECK AND FASTEN	0.4 M/H			

NOTE 1: Submit claim on Claim Entry Screen as "Campaign" type.

NOTE 2: If a part is found in need of replacement while performing this campaign and the affected part is still under warranty, submit a separate claim using the same repair order. If the affected part is out of warranty, submit a Prior Approval request for goodwill consideration prior to performing the work.

NOTE 3: This TSB includes Repair validation photos. Op times include VIN, Mileage, and Repair validation photos as outlined in the Digital Documentation Policy.

Parts Information:

Model	Part Description	Part Number	Figure	Remarks
G80 (RG3) G90 (RS4)	Transfer Case Mounting Bolt	11234-10406P		1 EA *Only order bolt if missing upon inspection

Service Procedure:

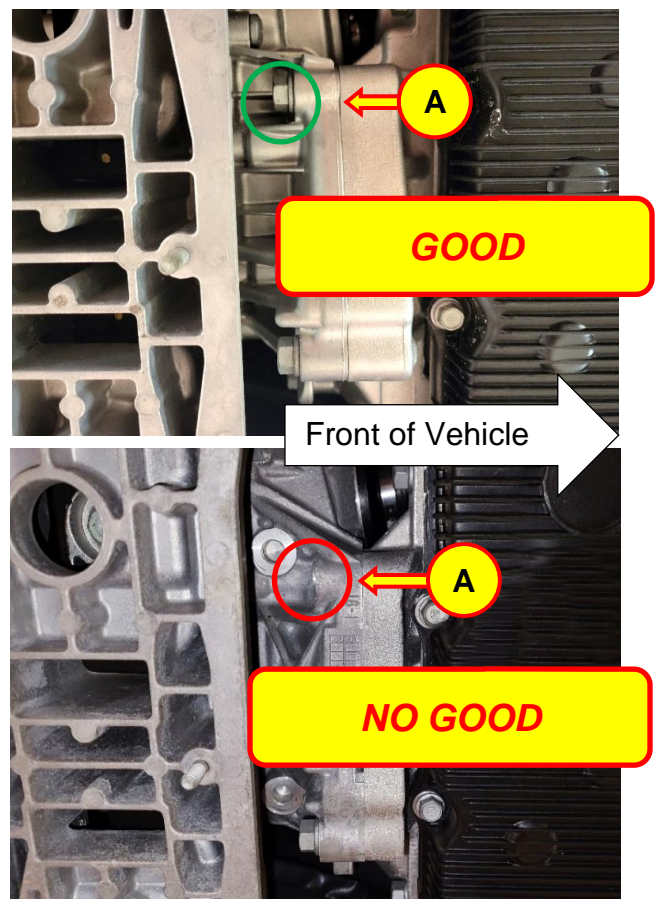
STUI



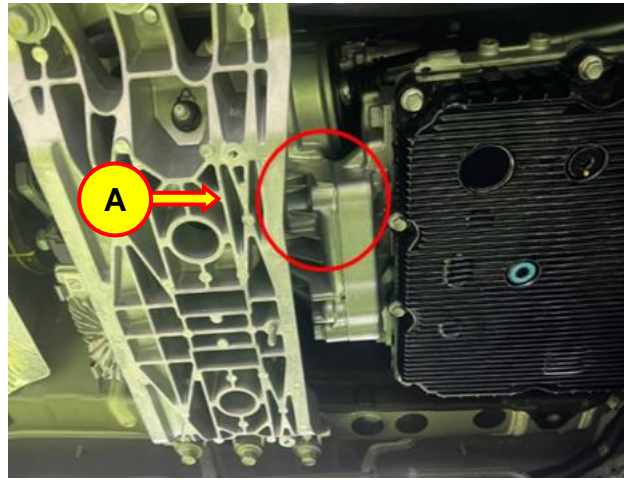
This TSB includes Repair validation photos. Refer to the latest Warranty Digital Documentation Policy for requirements.

Transfer Case Mounting Bolt Check

1. Lift the vehicle and remove the undertray.
2. Visually inspect the transfer case mounting bolt (A), located between the transfer case and transmission.
 - 1) If the bolt is present, continue to Step #7.
 - 2) If the bolt is missing, continue with service procedure below.



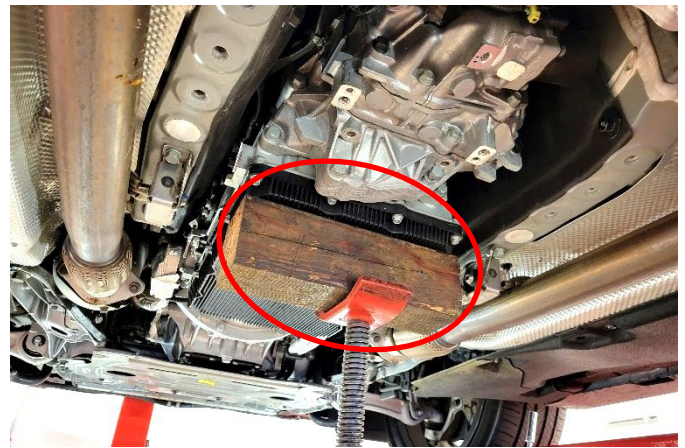
3. Install the new transfer case mounting bolt (A) by hand.



4. Use a transmission jack to support the transmission near the transmission mounting bracket.

NOTICE

Use a suitable object, such as a block of wood, to evenly distribute the force, to prevent damage to the oil pan.



5. Remove the transmission mounting bracket (B).

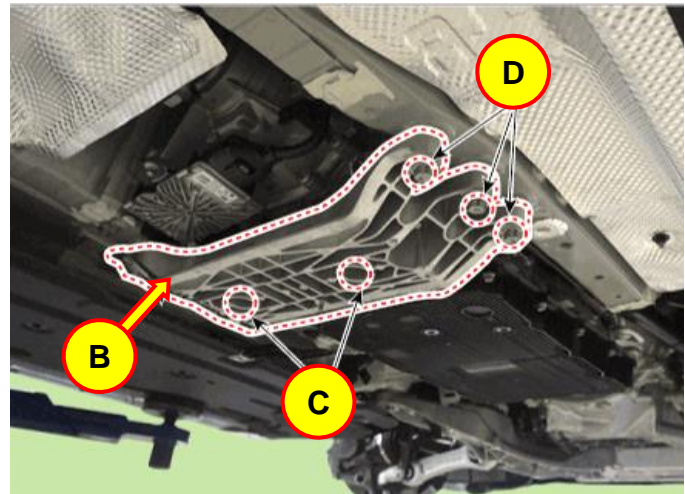
Tightening Torque (C):

2WD (Nut): 21.69 – 25.3 lb-ft (29.4 – 24.9 Nm)

4WD (Bolt): 47.0 – 61.5 lb-ft (64.7 – 83.4 Nm)

Tightening Torque (D):

Bolt: 43.4 – 50.6 lb-ft (58.8 – 68.6 Nm)



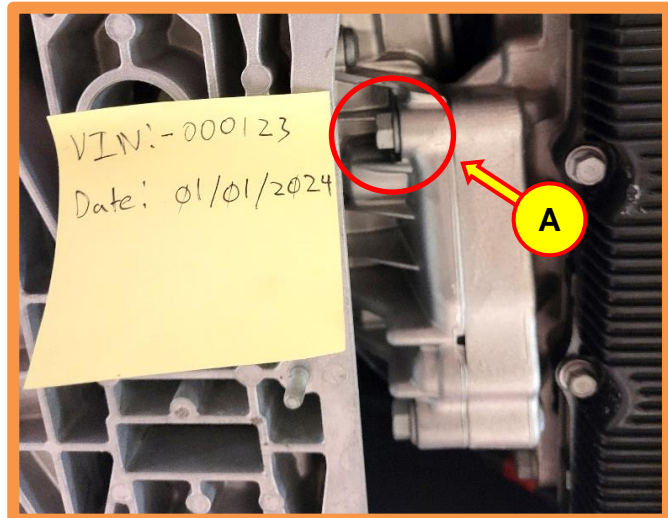
6. Fasten the transfer case mounting bolt (A) to the specified torque.

Tightening Torque (A):
21.7 –30.4 lb-ft (29.4 – 41.2 Nm)

STUI



Using STUI, take a picture of the bolt installed. In the picture, include a piece of paper with the last 6 digits of the VIN and date of repair. Ensure the picture is in focus. Upload the photo to STUI.



7. Install removed parts in reverse order of disassembly.
8. The service procedure is now complete.