

Anti-theft alarm system triggers without obvious cause

Topic number	LI80.50-P-077350
Version	1
Function group	80.50 - Anti-theft alarm system (ATA), Interior motion sensor/Tow sensor
Date	1/16/24
Validity	MODEL 118,177,243,247,167
Reason for change	Update of content regarding workshop information to be supplied

Complaint

Customer complains about anti-theft alarm system triggering without obvious cause when the vehicle is parked and/or when entering the vehicle.

All MFA2 and 167 derivates with code 882 may be affected.

Cause

This is caused by a sporadic loss of communication to the anti-theft alarm system [N26/6]. In many instances there are one or more FCs U110D87, U001988, U016787 stored in the control units anti-theft alarm system [N26/6] and/or signal acquisition and actuation module [N10] / [N10/6]. The alarm system memory may contain several alarm sources.

Remedy

Please process all following points in succession:

1. Check

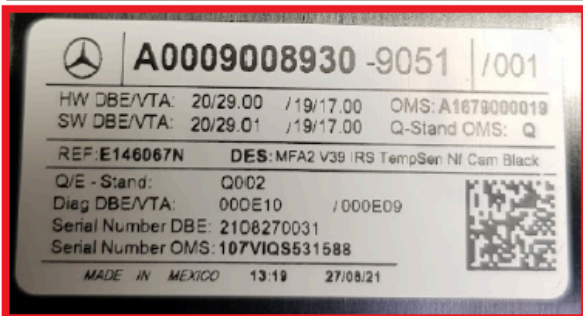
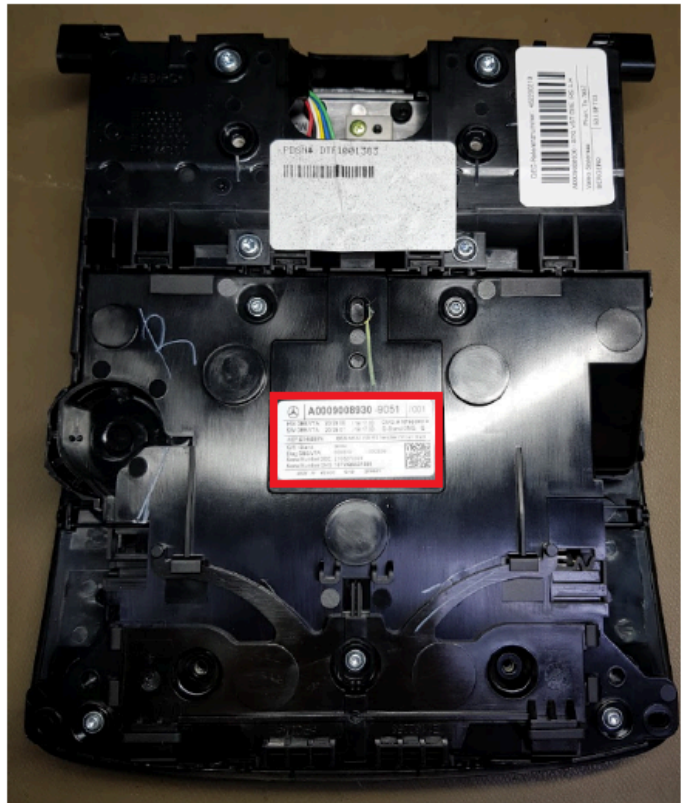
- Power supply of the overhead control panel [N70]
- Ground points of the overhead control panel [N70]
 - Model series 118, 177, 247: W78
 - Model series 167: W15/2
 - Model series 243: W78/2
- LIN lines between overhead control panel [N70] and alarm siren [H3/1]
- CAN lines between overhead control panel [N70] and signal acquisition and actuation module [N10] or [N10/6]

2. Open TIPS case

- Open a TIPS case for vehicles:
 - As of manufacturing date 01.02.2022, except production plant 4831 Aguascalientes Mexico or 1380 Tuscaloosa
 - As of manufacturing date 01.08.2022 and production plant 4831 Aguascalientes Mexico or 1380 Tuscaloosa
- Attach photo of overhead control panel label (see example images)
- Add control unit log of anti-theft alarm system [N26/6]

3. Remedy for vehicles prior to manufacturing date 01.02.2022 (except production plant 4831 Aguascalientes Mexico or 1380 Tuscaloosa) or 01.08.2022 (production plant 4831 Aguascalientes Mexico or 1380 Tuscaloosa)

- If the problem cannot be reproduced, the overhead control panel [N70] (anti-theft alarm system [N26/6] is integrated) must be replaced.



Attachments	
File	Description
Pic_1_DBE.png	



Symptoms

Overall vehicle > Safety and locking system > Antitheft alarm system ATA > Function > Inadvertent activation

Overall vehicle > Safety and locking system > Antitheft alarm system ATA > Function > Does not go off

Control unit/fault code

Control unit	Fault text
N10 - Signal acquisition and actuation module (SAM) (BCMFA2)	U016787 - Communication with the anti-theft alarm system has a malfunction. The message is missing. U001988 - Interior CAN communication has a malfunction. Bus OFF
N10/6 - Front signal acquisition and actuation module (Driver-side SAM) (BC_F213)	U016787 - Communication with the anti-theft alarm system has a malfunction. The message is missing. U001988 - Interior CAN communication has a malfunction. Bus OFF
N26/6 - ATA [EDW]/tow-away protection/interior protection (ATA) (VTA177)	U001988 - Interior CAN communication has a malfunction. Bus OFF U110D87 - Communication with the alarm siren has a malfunction. The message is missing.

Operation numbers/damage codes

Op. no.	Operation text	Time	Damage code	Note
			82561EC	