

# 2024 GX 550 Pre-Delivery Service (PDS)

**Service Category** General

**Section** Pre-Delivery Service

**Market** USA

Toyota Supports  
ASE Certification 

## Applicability

YEAR(S)	MODEL(S)	ADDITIONAL INFORMATION
2024	GX550	

## Introduction

Pre-Delivery Service (PDS) is a critical step in satisfying our new car customers. Customer feedback indicates the following areas deserve special attention when performing PDS:

- Careful inspection for paint chips/scratches and body dents/dings.
- Proper operation of electrical accessories (including interior light, clock, and radio reset).
- Interior cleanliness.
- Proper function of mechanical systems.

Customer retention and proper maintenance of vehicles are, and have always been, a major focus for Lexus. To help remind customers that regular service is essential to the proper maintenance of the vehicle, dealers are required to input their dealer information and set the service reminder on the Navigation Screen before delivery. By doing this, customers will be reminded to return to your dealership for service. (See Page 2 of the GX 550 PDS [Check Sheet](#), "Set Dealer and Service Reminder.")

This bulletin contains the PDS procedures that apply specifically to the 2024 model year GX 550. To properly perform a complete PDS, you must complete all procedures contained in this TSB as well as the GX 550 PDS Check Sheet.

In addition, if the vehicle is stored for over 30 days, be sure to follow [Long-Term Vehicle Storage Guidelines](#).

## 2024 GX 550 Pre-Delivery Service (PDS)

---

### Table of Contents

- [Warranty Information](#) ..... 3
- [Required Tools & Equipment](#) ..... 3
- [D/C Cut Fuse Installation](#) ..... 4
- [Front License Plate and Mounting Bracket Installation\\*](#) ..... 5
- [Check Torque of Wheel Fasteners](#) ..... 6
- [Tire Pressure Warning System \(TPWS\) Initialization](#) ..... 6
- [Seating Position Control ECU Initialization](#) ..... 7
- [Head Unit System Reset](#) ..... 7
- [Customize ACC Function](#) ..... 7
- [Dealer Contact Information for Call Dealer Head Unit Function](#) ..... 7
- [Navigation — Set Date & Time by GPS](#) ..... 8

\*If applicable.

## 2024 GX 550 Pre-Delivery Service (PDS)

---

### Warranty Information

OP CODE	DESCRIPTION	TIME	OFF	T1	T2
N/A	Not Applicable to Warranty	-	-	-	-

### Required Tools & Equipment

REQUIRED EQUIPMENT	SUPPLIER	PART NUMBER	QTY
Techstream ADVi*	ADE	TSADVUNIT	1
Techstream 2.0		TS2UNIT	
Techstream Lite		TSLITEPDLR01	
Techstream Lite (Green Cable)		TSLP2DLR01	

\*Essential SST.

**NOTE**

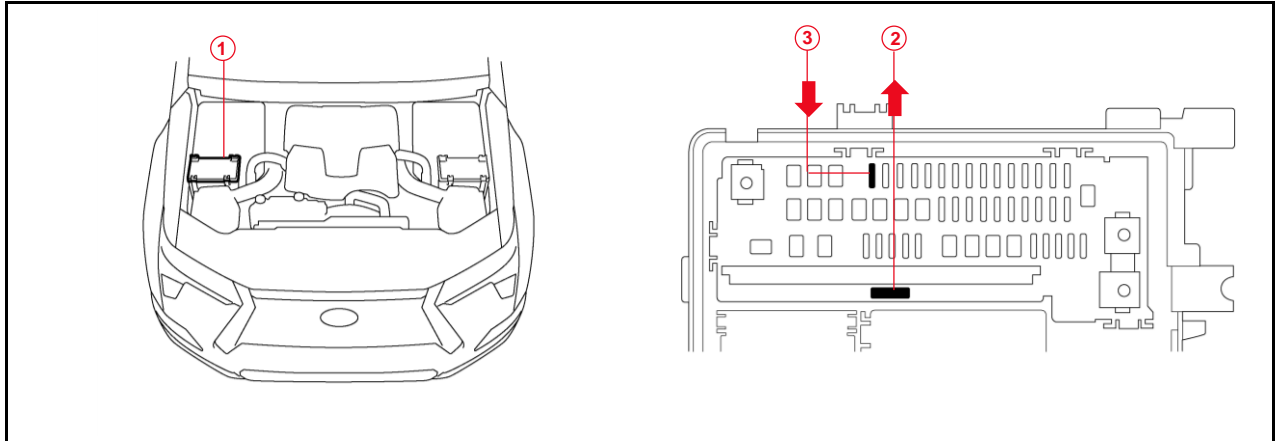
- Only ONE of the Techstream units listed above is required.
- GTS+ software version 2023.04.003.02 or later is required.
- Additional Techstream units may be ordered by calling Approved Dealer Equipment (ADE) at 1-800-368-6787.

## 2024 GX 550 Pre-Delivery Service (PDS)

### D/C Cut Fuse Installation

To minimize battery discharge during transportation and storage, the D/C cut fuse (30A) has been removed at the assembly plant and temporarily stored in the blank space of the relay block in the engine compartment. During PDS, reinstall the D/C cut fuse (30A) into its original location and clear ALL related Diagnostic Trouble Codes (DTCs).

**Figure 1.**



<b>1</b>	<b>Relay Block</b>
<b>2</b>	<b>Remove D/C Cut Fuse (30A)</b>

<b>3</b>	<b>Install D/C Cut Fuse (30A) (Original Location)</b>
----------	---

**NOTE**

- With the D/C cut fuse (30A) removed, if ANY DTCs are detected when the ignition is turned ON during transportation, use Global Techstream Software (GTS+) to clear ALL DTCs AFTER ensuring that there are NO malfunctions.
- While the vehicle is stored at the dealership, disconnect the negative (-) battery terminal to prevent battery discharge. Refer to [L-SB-0016-23](#), *Battery Maintenance During PDS*, for battery maintenance information.

## 2024 GX 550 Pre-Delivery Service (PDS)

### Front License Plate and Mounting Bracket Installation

The front license mounting plate bracket and two self-tapping screws are loaded in the vehicle at the assembly plant. Follow this procedure to install the front license plate mounting bracket and front license plate in states where it is required by law.

1. Align holes "A" of the mounting bracket with the dimples on the front bumper.

**NOTE**

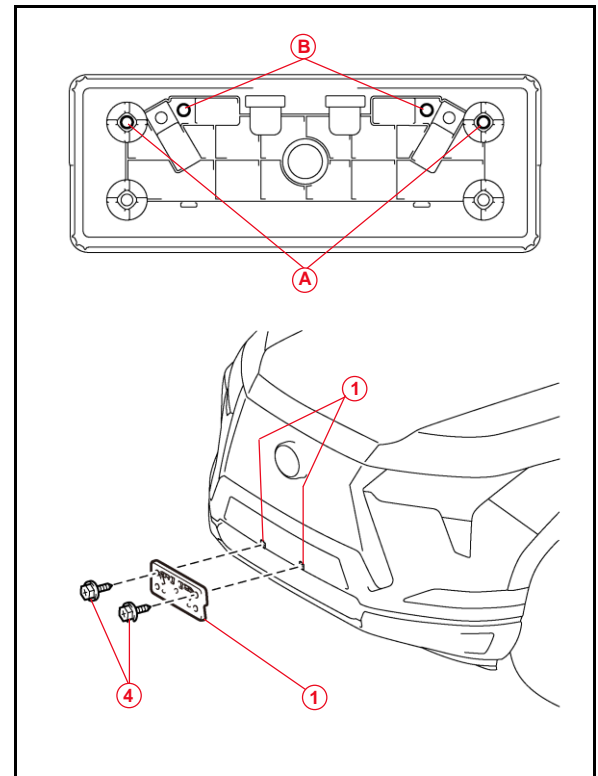
- Holes "A" are used for installation of the front license plate mounting bracket to the front bumper.
- Holes "B" are used to install the license plate onto the mounting bracket.

2. Install the front license plate mounting bracket to the front bumper using two self-tapping screws.

**NOTICE**

Do NOT overtighten the self-tapping screws.

**Figure 2.**



1	Mounting Bracket
2	Dimples
3	Self-tapping Screws

## 2024 GX 550 Pre-Delivery Service (PDS)

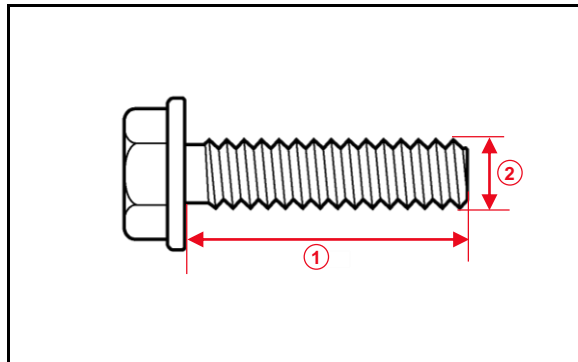
### Front License Plate and Mounting Bracket Installation (continued)

- Install the front license plate to the mounting bracket at holes "B" using two non-corroding bolts with the following dimensions:

**Length: 15.0 mm (0.59 in.)**

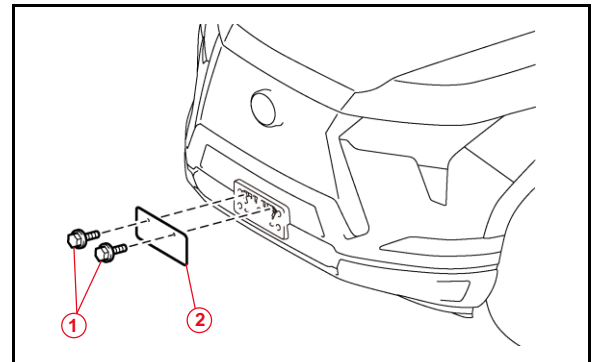
**Diameter: 6.0 mm (0.24 in.)**

**Figure 3.**



<b>1</b>	Length
<b>2</b>	Diameter

**Figure 4.**



<b>1</b>	Bolts
<b>2</b>	Front License Plate

### Check Torque Wheel Fastener Torque

- Refer to the applicable Repair Manual for the [specific torque](#) for the wheel fasteners.
- Using a calibrated torque wrench, verify the wheel fasteners on each wheel are tightened to the specified torque listed in the Repair Manual.

### Tire Pressure Warning System (TPWS) Initialization

After adjusting all the tires to the correct air pressure, perform the initialization of the Tire Pressure Warning System. Refer to the applicable Repair Manual for the TPWS [initialization procedure](#).

**NOTE**

To adjust the tire pressure correctly when the outside temperature is significantly colder than shop temperature, perform a Health Check using GTS+ and select the compensation tire pressure checkbox. Compensation pressures will display on the Health Check results screen. Adjust the tire pressure when the tires are cold.

## 2024 GX 550 Pre-Delivery Service (PDS)

---

### Seating Position Control ECU Initialization

Initialization of the seating position control ECU is required after D/C cut fuse installation. Refer to the applicable Repair Manual for the seating position control ECU [initialization procedure](#) (procedure 2).

### Head Unit System Reset

Prior to vehicle delivery, confirm that the welcome screen with language options appears on the head unit display when the ignition is switched to the ON position. There may be instances where the welcome screen with language options may not properly appear on the head unit display.

If the welcome screen showing language options is NOT displayed, complete the following steps:

1. Select the Settings option (gear icon).
2. Scroll down and select the Info & Security option.
3. The System Reset dialogue box will appear. Select Reset to confirm the resetting of the system.
4. Confirm that the welcome screen with language options is now displayed.

### Customize ACC Function

The pre-startup function detects when a user enters the vehicle, and it energizes the audio head unit (+BA) so that the multimedia system can quickly be used. This function is not enabled at the factory to reduce parasitic current draw in transit and storage. To enable this function, it is necessary to set the ACC customization function in the navigation display to OFF.

1. Turn the engine switch (power switch) to the ON position (ON mode).
2. Enter the following menus: *Settings – Vehicle Customization – Utility – ACC Customize*.
3. Change the setting to OFF.

### Dealer Contact Information for Call Dealer Head Unit Function

Refer to the *Multimedia System Owner's Manual* to [add dealer contact information](#). See section 2-8 *Vehicle Settings – Setting Dealer information*.

## 2024 GX 550 Pre-Delivery Service (PDS)

---

### Navigation — Set Date & Time by GPS

Prior to vehicle delivery, it is necessary to turn the Set Date & Time by GPS setting to the ON position.

1. Turn the engine switch (power switch) to the ON position (ON mode).
2. Navigate the following menus in the head unit: *Settings – General – Date & Time – Set date & time by GPS.*
3. Ensure the Set Date & Time by GPS function is set to the ON position.