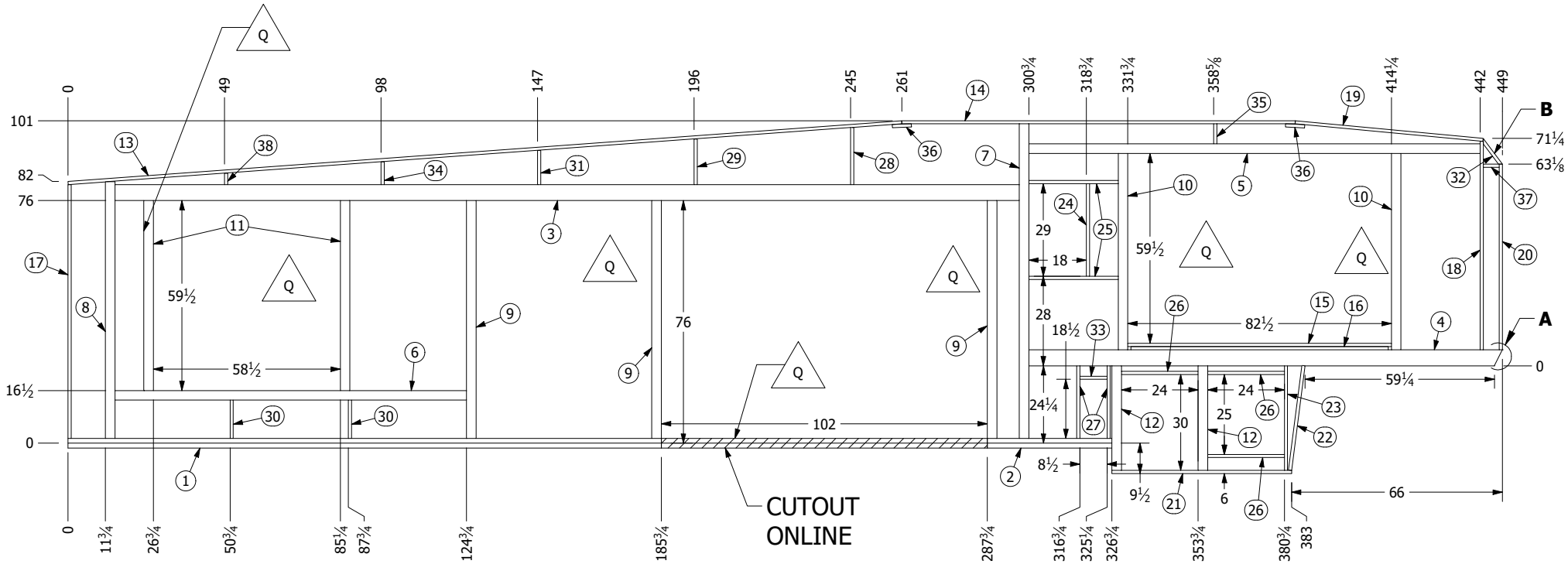




DRYER VENT
LOCATION

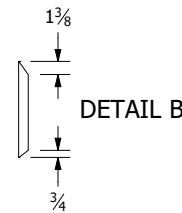
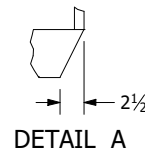


PARTS LIST			PARTS LIST			PARTS LIST			PARTS LIST		
ITEM	QTY	DESCRIPTION	ITEM	QTY	DESCRIPTION	ITEM	QTY	DESCRIPTION	ITEM	QTY	DESCRIPTION
1	1	1 1/2" x 1 1/2" x 240" - P-RAIL	11	2	3" x 1 1/2" x 59 1/2" Aluminum Tube	21	1	1" x 1 1/2" x 56 1/4" Aluminum Tube	31	1	1" x 1 1/2" x 10 5/8" Aluminum Tube
2	1	1 1/2" x 1 1/2" x 86 3/4" - P-RAIL	12	2	3" x 1 1/2" x 32 3/4" Aluminum Tube	22	1	1" x 1 1/2" x 33" Aluminum Tube	32	1	1" x 1 1/2" x 10" Aluminum Tube
3	1	5" x 1 1/2" x 283" - TRP HOLLOW	13	1	1" x 1 1/2" x 261 5/8" Aluminum Tube	23	1	1" x 1 1/2" x 32 3/4" Aluminum Tube	33	1	1" x 1 1/2" x 8 1/2" Aluminum Tube
4	1	5" x 1 1/2" x 148 1/4" - TRP HOLLOW	14	1	1" x 1 1/2" x 123 1/8" Aluminum Tube	24	1	1" x 1 1/2" x 29" Aluminum Tube	34	1	1" x 1 1/2" x 7 1/8" Aluminum Tube
5	1	3" x 1 1/2" x 141 1/4" Aluminum Tube	15	1	1" x 1 1/2" x 82 1/2" Aluminum Tube	25	2	1" x 1 1/2" x 28" Aluminum Tube	35	1	1" x 1 1/2" x 6 1/4" Aluminum Tube
6	1	3" x 1 1/2" x 110" Aluminum Tube	16	1	1" x 1 1/2" x 80 1/2" Aluminum Tube	26	3	1" x 1 1/2" x 24" Aluminum Tube	36	2	1" x 1 1/2" x 6" Aluminum Tube
7	1	3" x 1 1/2" x 98 1/2" Aluminum Tube	17	1	1" x 1 1/2" x 79 1/2" Aluminum Tube	27	2	1" x 1 1/2" x 22 3/4" Aluminum Tube	37	1	1" x 1 1/2" x 5" Aluminum Tube
8	1	3" x 1 1/2" x 80 3/8" Aluminum Tube	18	1	1" x 1 1/2" x 65 1/4" Aluminum Tube	28	1	1" x 1 1/2" x 17 7/8" Aluminum Tube	38	1	1" x 1 1/2" x 3 1/2" Aluminum Tube
9	3	3" x 1 1/2" x 74 1/2" Aluminum Tube	19	1	1" x 1 1/2" x 59" Aluminum Tube	29	1	1" x 1 1/2" x 14 1/4" Aluminum Tube			
10	2	3" x 1 1/2" x 61 1/2" Aluminum Tube	20	1	1" x 1 1/2" x 58 1/8" Aluminum Tube	30	2	1" x 1 1/2" x 12" Aluminum Tube			



VIEWED FROM INTERIOR

MODEL LIST
MPF320FL



IMPRESSION
PLANT #83

THE INFORMATION CONTAINED IN THIS DOCUMENT IS PROPRIETARY, CONFIDENTIAL, AND INTENDED ONLY FOR FOREST RIVER PERSONNEL. AUTHORIZED FOREST RIVER DEALERS, OR OTHER QUALIFIED REPAIR SHOPS, NEITHER THIS DRAWING NOR ANY REPRODUCTION THEREOF MAY BE USED FOR ANY PURPOSE WITHOUT PERMISSION IN WRITING FROM FOREST RIVER, INC. IF YOU ARE NOT THE INTENDED RECIPIENT, PLEASE RETURN TO FOREST RIVER, INC. OR DESTROY. PLEASE IDENTIFY ANY USE OR CIRCULATION OF THIS DOCUMENT IS NOT PERMITTED AND MAY BE CAUSE FOR LEGAL ACTION.

BY: **NFV** APPROVED BY: _____ FRACTIONAL TOLERANCE: +/- 1/16
DATE: 3/16/2020 SHEET #: 1 OF 2 ANGULAR TOLERANCE: +/- 1'
DESCRIPTION: _____ SHEET SIZE: A




REV: **Q** VENDOR PART #: _____ DRAWING #: **07- 000407**

REVISION HISTORY

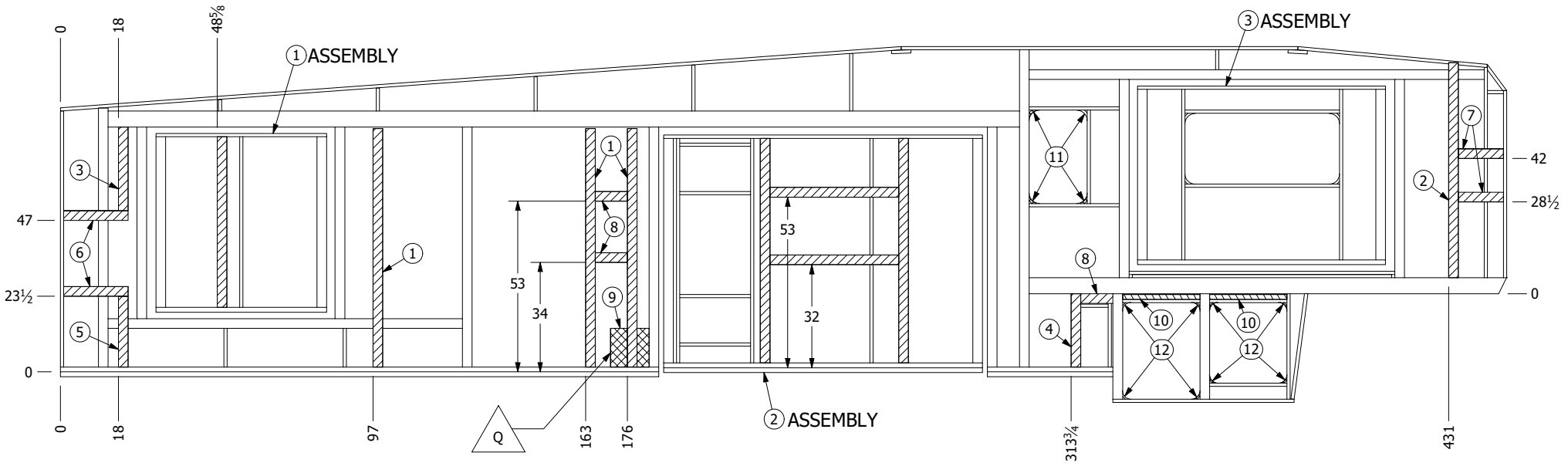
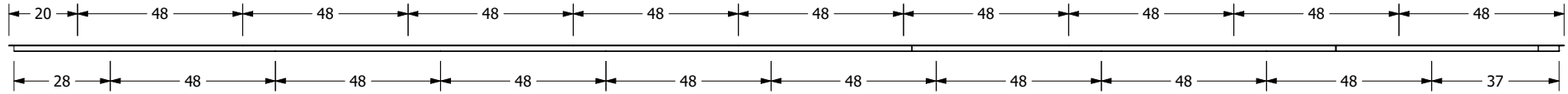
REV	ECO #	DESCRIPTION	DATE	BY
O	ECO-22-0783	CHANGED AL TUBES TO CHANGE DIMS FOR SLIDEOUT	3/7/2022	JL
P		REMOVED LAUAN LAYER TO SINGLE LAYER LAUAN	9/6/2022	PBO
Q	ECO-24-0533	UPDATED TO CURRENT BUILD SPECS/REPLACED 5" VERTICAL TUBES W/ 3"/REPLACED BACKER	11/28/2022	JL

RS SIDEWALL ASSEMBLY

BACKER LEGEND:

-  EGS BACKER
-  FOAM-WOOD BACKER
-  WOOD BACKER

PARTS LIST			PARTS LIST			PARTS LIST			PARTS LIST		
ITEM	QTY	DESCRIPTION	ITEM	QTY	DESCRIPTION	ITEM	QTY	DESCRIPTION	ITEM	QTY	DESCRIPTION
1	3	3" x 74" x .019-EGS Backer	4	1	3" x 22 3/4" x .019-EGS Backer	7	2	3" x 14" x .019-EGS Backer	10	2	2" x 2" x 24" - WOOD SPF
2	1	3" x 66 3/4" x .019-EGS Backer	5	1	3" x 22" x .019-EGS Backer	8	3	3" x 10" x .019-EGS Backer	11	4	1 1/2 x 3.2" Radius Block
3	1	3" x 26" x .019-EGS Backer	6	2	3" x 20" x .019-EGS Backer	9	1	12" x 12" x 1 1/2" - Foam Wood	12	8	1 1/2 x 2.62" Radius Block



VIEWED FROM INTERIOR

MODEL LIST
MPF320FL

ASSEMBLY LIST			
ITEM	QTY	DESCRIPTION	PART NUMBER
1	1	53" X 55 1/2" UD WARD SLIDE - BACK WALL	11-Slide Out - 000972
2	1	99" X 71 3/8" KITCHEN SLIDE BACK WALL	11-Slide Out - 001017
3	1	77" X 55 1/2" UD SOFA SLIDE - BACK WALL	11-Slide Out - 001020



IMPRESSION
PLANT #83

THE INFORMATION CONTAINED IN THIS DOCUMENT IS PROPRIETARY, CONFIDENTIAL AND INTENDED ONLY FOR FOREST RIVER PERSONNEL. AUTHORIZED FOREST RIVER DEALERS, OR OTHER QUALIFIED REPAIR SHOPS, NEITHER THIS DRAWING NOR ANY REPRODUCTION THEREOF MAY BE USED FOR ANY PURPOSE WITHOUT PERMISSION IN WRITING FROM FOREST RIVER, INC. IF YOU ARE NOT THE INTENDED RECIPIENT, PLEASE RETURN TO FOREST RIVER, INC. OR DESTROY. PLEASE NOTE THAT ANY USE OR CIRCULATION OF THIS DOCUMENT IS NOT PERMITTED AND MAY BE CAUSE FOR LEGAL ACTION.

BY: **NFV** APPROVED BY: _____ FRACTIONAL TOLERANCE: +/- 1/16
 DATE: 3/16/2020 SHEET #: 2 OF 2 ANGULAR TOLERANCE: +/- 1'
 DESCRIPTION: _____ SHEET SIZE: A

REVISION HISTORY				
REV	ECO #	DESCRIPTION	DATE	BY
O	ECO-22-0783	CHANGED AL TUBES TO CHANGE DIMS FOR SLIDEOUT	3/7/2022	JL
P		REMOVED LAUAN LAYER TO SINGLE LAYER LAUAN	9/6/2022	PBO
Q	ECO-24-0533	UPDATED TO CURRENT BUILD SPECS/REPLACED 5" VERTICAL TUBES W/ 3"/REPLACED BACKER	11/28/2022	JL

RS SIDEWALL ASSEMBLY
 REV: **Q** VENDOR PART#: _____ DRAWING #: **07- 000407**