

# 2024 RZ 300e and RZ 450e Pre-Delivery Service (PDS)

**Service Category** General

**Section** Pre-Delivery Service

**Market** USA

Toyota Supports  
ASE Certification 

## Applicability

YEAR(S)	MODEL(S)	ADDITIONAL INFORMATION
2024	RZ300E, RZ450E	

## Introduction

Pre-Delivery Service (PDS) is a critical step in satisfying our new car customers. Customer feedback indicates the following areas deserve special attention when performing PDS:

- Careful inspection for paint chips/scratches and body dents/dings.
- Proper operation of electrical accessories (including interior light, clock, and radio reset).
- Interior cleanliness.
- Proper function of mechanical systems.

Customer retention and proper maintenance of vehicles are and have always been a major focus for Lexus. To help remind customers that regular service is essential to the proper maintenance of the vehicle, dealers are required to input their dealer information and set the service reminder on the Navigation Screen before delivery. By doing this, customers will be reminded to return to your dealership for service. (See Page 2 of the RZ 300e/RZ 450e PDS [Check Sheet](#) "Set Dealer and Service Reminder.")

This bulletin contains the PDS procedures that apply specifically to 2024 model year RZ 300e and RZ 450e vehicles. To properly perform a complete PDS, you must complete all procedures contained in this TSB as well as the RZ 300e/RZ 450e PDS [Check Sheet](#).

In addition, if the vehicle is stored for over 30 days, be sure to follow [Long-Term Vehicle Storage Guidelines](#) and [Battery Electric Vehicle \(BEV\) Traction Battery Long-Term Maintenance Guidelines](#).

## 2024 RZ 300e and RZ 450e Pre-Delivery Service (PDS)

---

### Table of Contents

- [Warranty Information](#)..... 3
- [Required Tools & Equipment](#) ..... 3
- [D/C Cut Fuse \(30A\) Installation](#)..... 4
- [Front License Plate and Mounting Bracket Installation\\*](#)..... 5
- [Front and Rear Emergency Towing Eyelet Removal and Hole Cover Installation](#)..... 7
- [Installation of Rubber Body Plugs](#) ..... 9
- [Power Back Door Initialization](#)..... 10
- [Tire Pressure Warning System \(TPWS\) Initialization](#)..... 10
- [Enable Hybrid Battery Thermal Keep Control Mode](#)..... 11
  - [Confirm Hybrid Battery Thermal Keep Control Mode State](#)..... 11
  - [Set Hybrid Battery Thermal Keep Control Mode](#)..... 12
- [Seating Position Control ECU Initialization](#)..... 12
- [Head Unit System Reset](#)..... 13
- [Customize ACC Function](#)..... 13
- [Dealer Contact Information for Call Dealer Head Unit Function](#)..... 13
- [Navigation — Set Date & Time by GPS](#) ..... 13

\*If Applicable

## 2024 RZ 300e and RZ 450e Pre-Delivery Service (PDS)

---

### Warranty Information

OP CODE	DESCRIPTION	TIME	OFF	T1	T2
N/A	Not Applicable to Warranty	-	-	-	-

### Required Tools & Equipment

REQUIRED EQUIPMENT	SUPPLIER	PART NUMBER	QTY
Techstream ADVi*	ADE	TSADVUNIT	1
Techstream 2.0		TS2UNIT	
Techstream Lite		TSLITEPDLR01	
Techstream Lite (Green Cable)		TSLP2DLR01	

\*Essential SST.

#### NOTE

- Only ONE of the Techstream units listed above is required.
- GTS+ software version 2023.04.003.02 or later is required.
- Additional Techstream units may be ordered by calling Approved Dealer Equipment (ADE) at 1-800-368-6787.

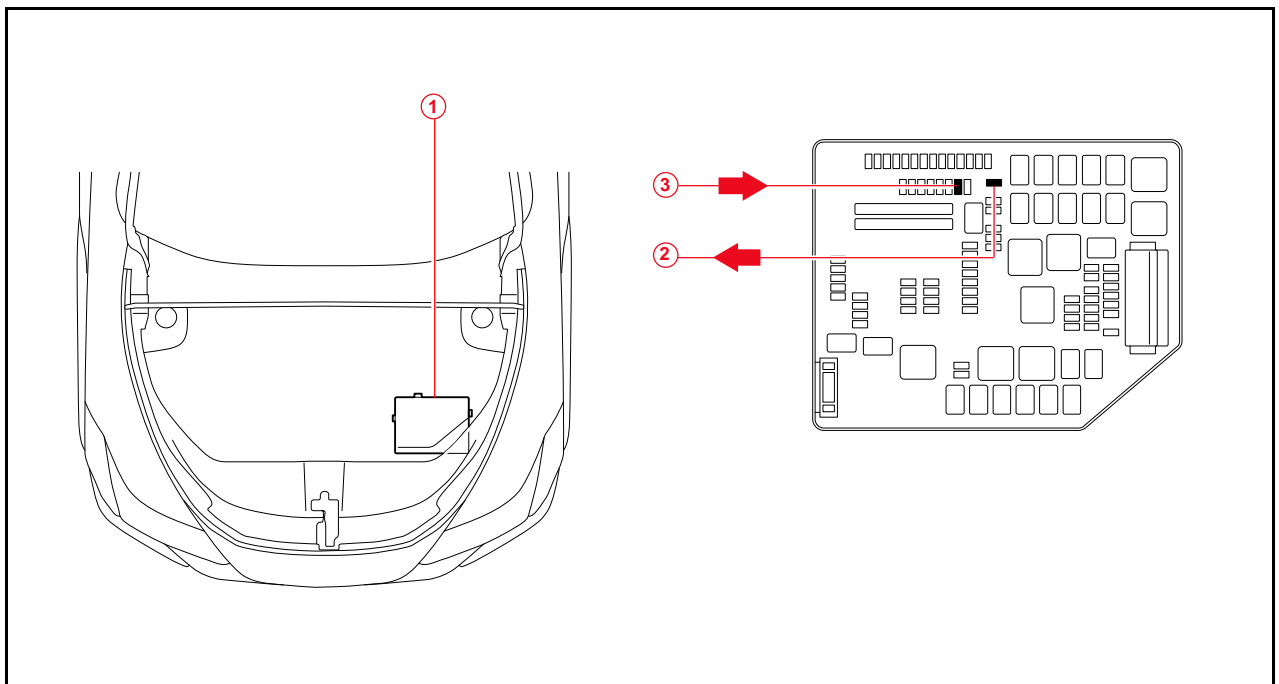
## 2024 RZ 300e and RZ 450e Pre-Delivery Service (PDS)

### D/C Cut Fuse (30A) Installation

To minimize battery discharge during transportation and storage, the D/C cut fuse (30A) has been removed at the assembly plant and temporarily stored in the blank space of the relay block in the engine compartment. During PDS, reinstall the D/C cut fuse (30A) to its original location and confirm ALL related Diagnostic Trouble Codes (DTCs) are cleared.

Remove the D/C cut fuse (30A) from the blank space of the relay block in the engine compartment and install the D/C cut fuse (30A) in the relay block as shown.

**Figure 1.**



<b>1</b>	<b>Relay Block</b>
<b>2</b>	<b>Remove the D/C Cut Fuse (30A)</b>

<b>3</b>	<b>Install the D/C Cut Fuse (30A) (Original Location)</b>
----------	---

**NOTE**

- With the D/C cut fuse (30A) removed, if ANY DTCs are detected when the ignition is turned ON during transportation, use Global Techstream Software (GTS) to clear ALL DTCs AFTER ensuring that there are NO malfunctions.
- While the vehicle is stored at the dealership, disconnect the negative (-) battery terminal to prevent battery discharge. Refer to [L-SB-0016-23](#) *Battery Maintenance During PDS* for battery maintenance information.

## 2024 RZ 300e and RZ 450e Pre-Delivery Service (PDS)

### Front License Plate and Mounting Bracket Installation

The front license plate bracket and two self-tapping screws are stored in the vehicle. Follow this procedure to install the front license plate bracket and front license plate in states where it is required by law.

- Align holes "A" of the mounting bracket with the dimples on the front bumper cover. Mark the location of holes "B" on the bumper cover.

**NOTE**

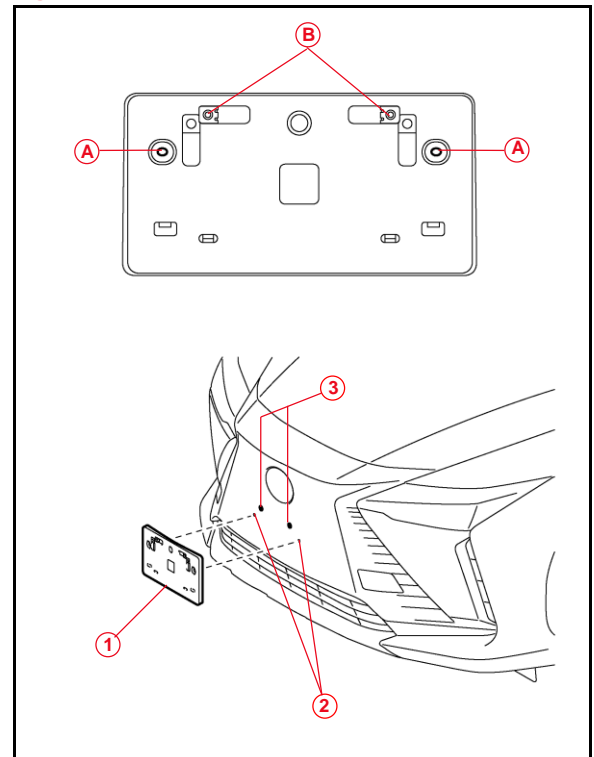
- Holes "A" are used for installation of the mounting bracket to the bumper cover.
- Holes "B" are used for the installation of the front license plate to the mounting bracket.

- Drill two relief holes with a diameter of 11 mm (0.43 in.) at the hole "B" marks on the front bumper cover to prevent the license plate retaining bolt end from contacting the cover.

**NOTICE**

- Do NOT pre-drill holes into the dimples.
- Do NOT overtighten the self-tapping screws.

**Figure 2.**



1	Mounting Bracket
2	Dimples
3	Mark and Drill Holes

- Install the mounting bracket to the front bumper cover by attaching the two self-tapping screws.

## 2024 RZ 300e and RZ 450e Pre-Delivery Service (PDS)

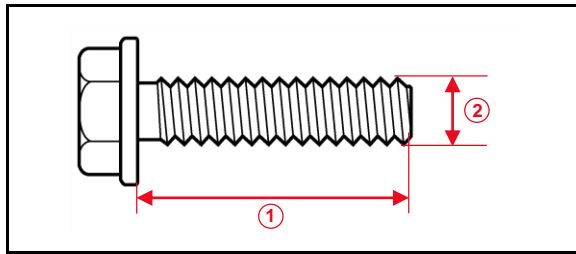
### Front License Plate and Mounting Bracket Installation (continued)

- Install the front license plate onto the mounting bracket at holes "B" using two noncorroding bolts with the following dimensions:

**Nominal Length: 15.0 mm (0.59 in.)**

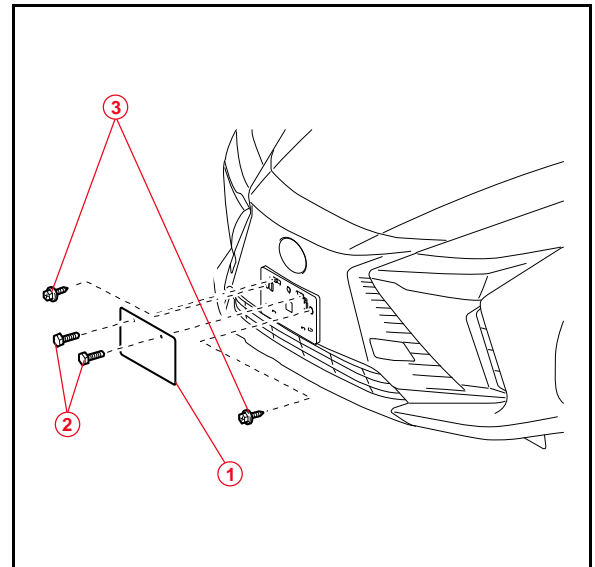
**Diameter: 6.0 mm (0.24 in.)**

**Figure 3.**



<b>1</b>	<b>Nominal Length</b>
<b>2</b>	<b>Diameter</b>

**Figure 4.**



<b>1</b>	<b>Front License Plate</b>
<b>2</b>	<b>Bolts</b>
<b>3</b>	<b>Self-tapping Screws</b>

## 2024 RZ 300e and RZ 450e Pre-Delivery Service (PDS)

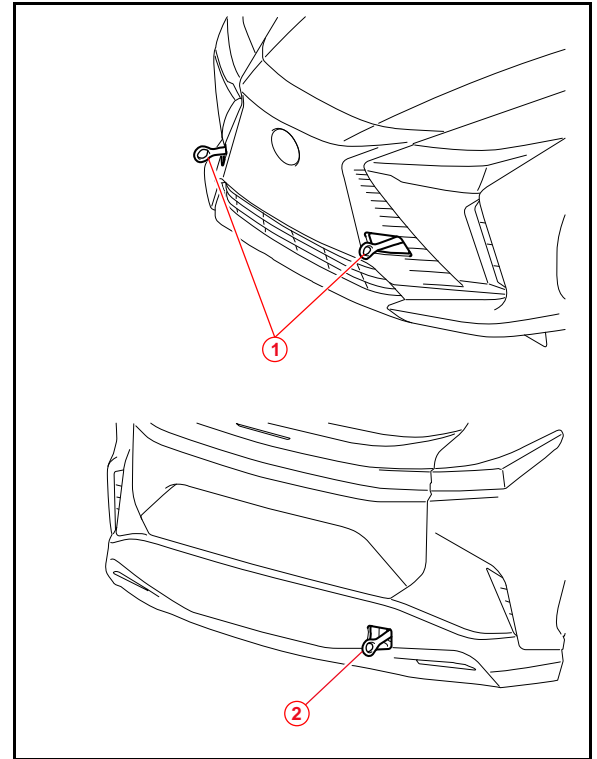
### Front and Rear Emergency Towing Eyelet Removal and Hole Cover Installation

1. Remove the front and rear emergency towing eyelets from the front and rear bumpers by turning them counterclockwise.

**HINT**

If it is difficult to loosen the emergency towing eyelets, use a steel bar.

**Figure 5.**



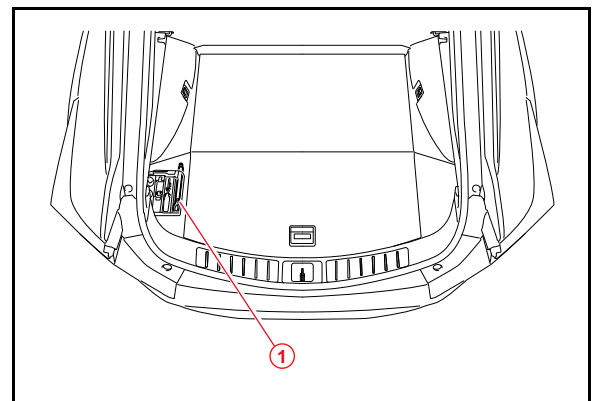
<b>1</b>	<b>Front Emergency Towing Eyelets</b>
<b>2</b>	<b>Rear Emergency Towing Eyelet</b>

2. Place one of the removed rear emergency towing eyelets into the luggage tray in the luggage compartment.

**HINT**

Dispose of the removed front emergency towing eyelets.

**Figure 6.**



<b>1</b>	<b>Rear Emergency Towing Eyelet</b>
----------	-------------------------------------

## 2024 RZ 300e and RZ 450e Pre-Delivery Service (PDS)

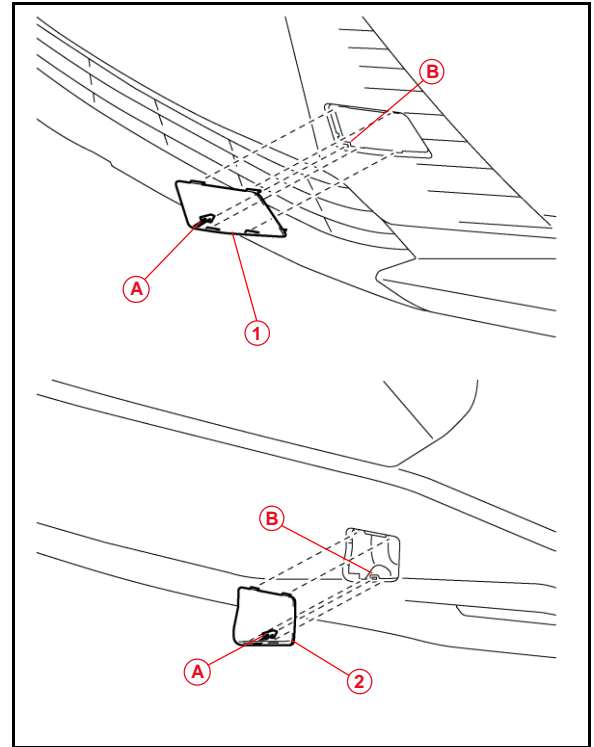
### Front and Rear Emergency Towing Eyelet Removal and Hole Cover Installation (continued)

3. Install the front and rear emergency towing eyelet hole covers, which are stored in the glove compartment, onto the front and rear bumpers.
  - A. Insert the arrow-shaped part of the emergency towing eyelet hole cover "A" into the eyelet hole "B" as shown.
  - B. Install the emergency towing eyelet hole cover to the hole of the bumper.

**HINT**

Make sure the front emergency towing eyelet hole cover is installed in the front, and the rear emergency towing eyelet hole cover is installed in the rear.

**Figure 7.**



<b>A</b>	Arrow-shaped Part
<b>B</b>	Eyelet Hole
<b>1</b>	Front Emergency Towing Eyelet Hole Cover
<b>2</b>	Rear Emergency Towing Eyelet Hole Cover

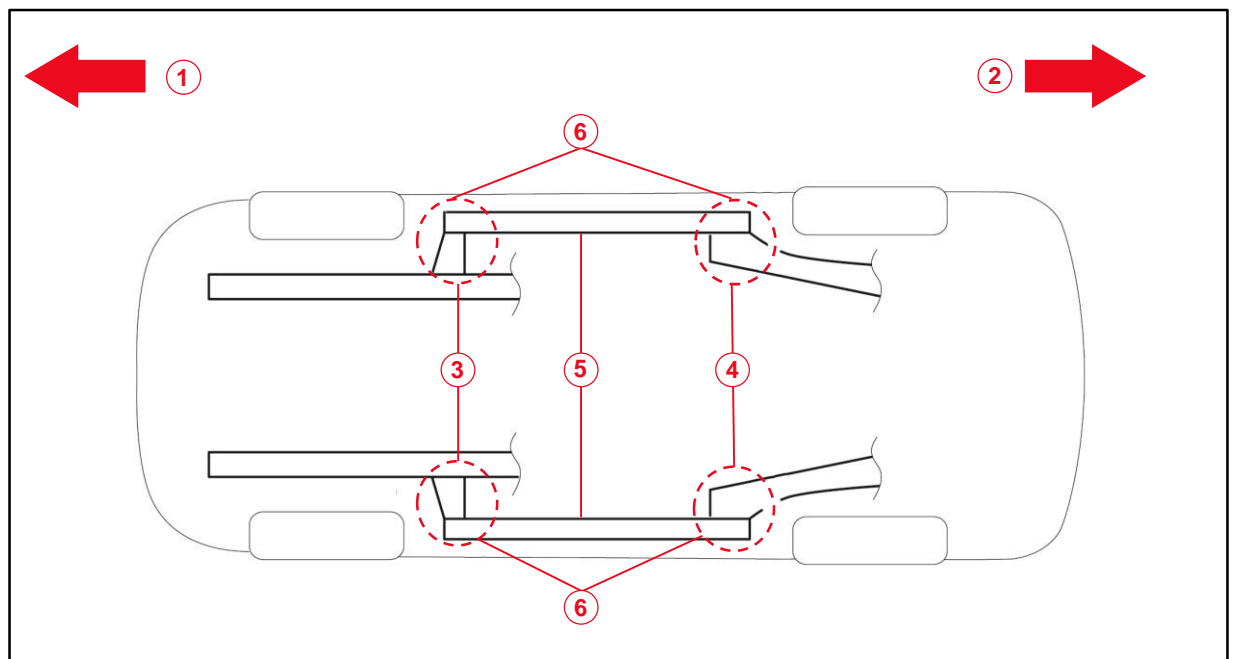


## 2024 RZ 300e and RZ 450e Pre-Delivery Service (PDS)

### Installation of Rubber Body Plugs

1. Confirm the number of plugs in the glove box. If two plugs are present, perform substep 2A ONLY. If four plugs are present, perform substep 2A AND substep 2B.
2. Install plugs according to the following instructions by confirming the number of plugs in the glove box.
  - A. Install two plugs in the rear side member hole or rocker inner hole.
  - B. Install two plugs in the torque box hole or rocker inner hole.

**Figure 8.**



<b>1</b>	<b>Front Side</b>
<b>2</b>	<b>Rear Side</b>
<b>3</b>	<b>Torque Box Hole or Rocker Inner Hole</b>
<b>4</b>	<b>Rear Side Member Hole or Rocker Inner Hole</b>
<b>5</b>	<b>Rocker Inner</b>
<b>6</b>	<b>Install Plug Here (if Applicable)</b>

**NOTICE**

- The installation of these plugs is required to prevent rust.
- These plugs are stored in the glove box.
- The number of plugs may vary according to production locations in the same vehicle model.

## 2024 RZ 300e and RZ 450e Pre-Delivery Service (PDS)

---

### Power Back Door Initialization

Refer to the applicable Repair Manual for the power back door [initialization procedure](#).

### Tire Pressure Warning System (TPWS) Initialization

Refer to the applicable Repair Manual for the TPWS [initialization procedure](#).

**NOTE**

To adjust the tire pressure correctly when the outside temperature is significantly colder than shop temperature, perform a Health Check using GTS+ and select the compensation tire pressure checkbox. Compensation pressures will display on the Health Check results screen. Adjust the tire pressure when the tires are cold.

## 2024 RZ 300e and RZ 450e Pre-Delivery Service (PDS)

---

### Enable Hybrid Battery Thermal Keep Control Mode

HV/BEV battery may be frozen in extremely cold areas. As a result, the HV/BEV battery may become excessively weak, and the system may NOT be able to be started. By enabling HV/BEV Battery Thermal Keep Control Mode, it is possible to warm the HV/BEV battery and maintain its current temperature in order to prevent it from becoming excessively weak.

When this mode is set to ON, the timer charging settings are canceled at temperatures of 14°F (-10°C) or lower. Charging will begin immediately when the charging cable is connected to the vehicle.

**Table 1. HV/BEV Battery Thermal Keep Control Mode**

PURPOSE	CONDITION	OPERATION
Prevent the HV/BEV battery from freezing.	<ul style="list-style-type: none"> <li>Ambient temperature is 14°F (-10°C) or lower.</li> <li>Charging cable is connected to the vehicle.</li> </ul>	<ul style="list-style-type: none"> <li>Begins to warm the HV/BEV battery to maintain its current temperature when the ambient temperature drops to 14°F (-10°C) or lower when the charging cable is connected to the vehicle.</li> <li>To prevent the HV/BEV battery from freezing when a charging start time is set, when the HV/BEV Battery Thermal Keep Mode is enabled, the charging timer will be disabled, and charging will begin immediately when the charging cable is connected to the vehicle.</li> </ul>

To enable HV/BEV Battery Thermal Keep Control Mode, it is necessary to use GTS+ during PDS at the dealership.

### Confirm Hybrid Battery Thermal Keep Control Mode State

1. Connect the Techstream to the DLC3.
2. Turn the power switch IG-ON.
3. Read the Data List on GTS+ software by entering the following menus: *Powertrain – HV Battery – Data List – Hybrid Battery Thermal Keep Control Mode Status.*
4. Check the results by referring to the following table:

**Table 2.**

Tester Display	Measurement Item	Range	Normal Condition
Hybrid Battery Thermal Keep Control Mode Status	Hybrid Battery Thermal Keep Control Mode State	ON or OFF	ON: Enabled OFF: Disabled

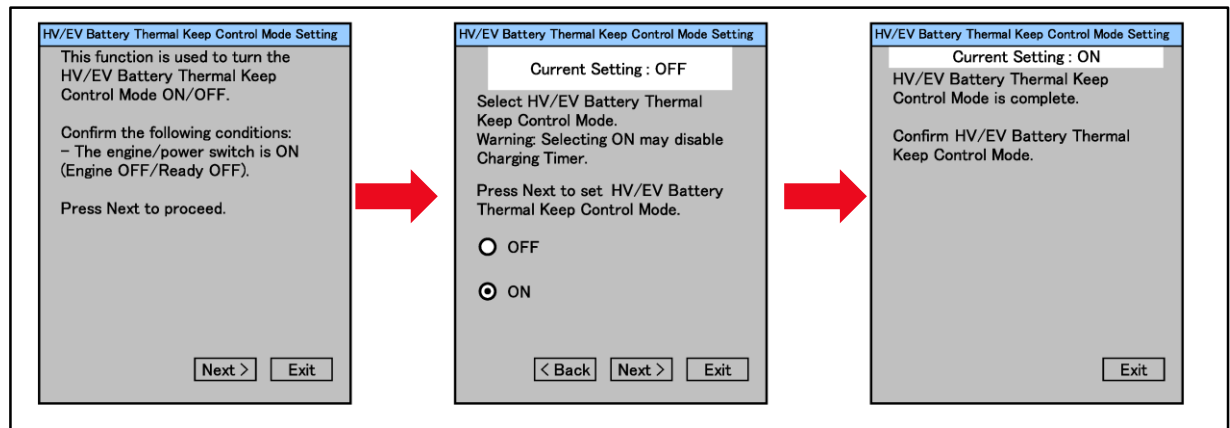
## 2024 RZ 300e and RZ 450e Pre-Delivery Service (PDS)

### Enable Hybrid Battery Thermal Keep Control Mode (continued)

#### Set Hybrid Battery Thermal Keep Control Mode

1. Connect the Techstream to the DLC3.
2. Turn the power switch to IG-ON.
3. Enter the following menus: *Powertrain – HV Battery – Utility – Hybrid Battery Thermal Keep Control Mode.*

**Figure 9.**



4. Confirm the following message is displayed: "This function is used to turn the Hybrid Battery Thermal Keep Control Mode ON / OFF."
5. Confirm that the conditions displayed on the screen are met, and then press Next.

**NOTE**

The power switch is ON (Ready OFF).

6. Confirm the following message is displayed: "Select Hybrid Battery Thermal Keep Control Mode."
7. Select ON and press Next.

**NOTICE**

Selecting ON may disable the charging timer.

8. Confirm the following message is displayed: "Hybrid Battery Thermal Keep Control Mode is complete."

### Seating Position Control ECU Initialization

Refer to the applicable Repair Manual for the seating position control ECU [initialization procedure](#) (procedure 3).

## 2024 RZ 300e and RZ 450e Pre-Delivery Service (PDS)

---

### Head Unit System Reset

Before selling a Lexus vehicle, please confirm that the welcome screen with language options appears on the head unit display when ignition is switched to the ON position. There may be instances where the welcome screen with language options may not properly appear on the head unit display.

If the welcome screen showing language options is not displayed, complete the following steps:

1. Select the Settings option (gear icon).
2. Scroll down and select the Info & Security option.
3. The System Reset dialogue box will appear. Select Reset to confirm the resetting of system.
4. Confirm that the welcome screen with language options is now displayed.

### Customize ACC Function

The pre-startup function detects when a user enters the vehicle and energizes the audio head unit (+BA) so that the multimedia system can quickly be used. This function is not enabled at the factory to reduce parasitic current draw in transit and storage. To enable this function, it is necessary to set the ACC customization function in the navigation display to OFF within the GTS+ software.

1. Turn the engine switch (power switch) to the ON position (ON mode).
2. Enter the following menus: *Settings – Vehicle Customization – Utility – ACC Customize*.
3. Change the setting to OFF.

### Dealer Contact Information for Call Dealer Head Unit Function

Refer to the *Multimedia System Owner's Manual* to [add dealer contact information](#).

See section 2-8 *Vehicle Settings – Setting Dealer information*.

### Navigation — Set Date & Time by GPS

Prior to vehicle delivery, we are asking that dealers please confirm that they have turned the "Set time by GPS" functionality on in each vehicle. Therefore, it is necessary to turn the Set Time by GPS setting to the ON position.

1. Turn the engine switch (power switch) to ON position (ON mode).
2. Navigate the following menus in the head unit: *Settings – General – Date & Time – Set date & time by GPS*.
3. Ensure the Set date & time by GPS function is set to the ON position.