



TECHNICAL SERVICE BULLETIN

Classification: BT21-003C	Reference: NTB21-019C	Date: December 8, 2023
------------------------------	--------------------------	---------------------------

FRONT MAP LAMP NOT WORKING OR SWITCH COMING APART

This bulletin has been amended. See **AMENDMENT HISTORY** on the last page.
Please discard previous versions of this bulletin.

- APPLIED VEHICLES:** 2022-2024 Frontier (D41)
2020-2024 Titan/Titan XD (A61) – SL, Platinum Reserve, Pro-4X
- APPLIED DATES:** Frontier: Built on or before October 31, 2023
Titan/Titan XD: Built from December 13, 2019 to October 31, 2023
- APPLIED SYSTEMS:** Front Map Lamp (LED Type only)

IF YOU CONFIRM

The front map lamp operation is intermittent,

OR

The front map lamp switch and trim bezel assembly is coming apart and/or missing.

ACTION

Replace the front map lamp switch and trim bezel assembly.

IMPORTANT: The purpose of **ACTION** (above) is to give you a quick idea of the work you will be performing. You **MUST** closely follow the entire **SERVICE PROCEDURE** as it contains information that is essential to successfully completing this repair.

Nissan Bulletins are intended for use by qualified technicians, not 'do-it-yourselfers'. Qualified technicians are properly trained individuals who have the equipment, tools, safety instruction, and know-how to do a job properly and safely. **NOTE:** If you believe that a described condition may apply to a particular vehicle, DO NOT assume that it does. See your Nissan dealer to determine if this applies to your vehicle.

SERVICE PROCEDURE

Remove and Replace the Front Map Lamp Switch and Trim Bezel

HINT: Removal of the front map lamp assembly from the vehicle is not required. The procedure can be performed while the front map lamp assembly is installed in the vehicle.

1. Insert a trim/finesse stick between the lamp lens and the knob switch trim bezel, in the middle of the trim bezel.



Figure 1

2. Gently pry inward and upward on the trim bezel to disengage the snap lock on the side of the trim bezel.

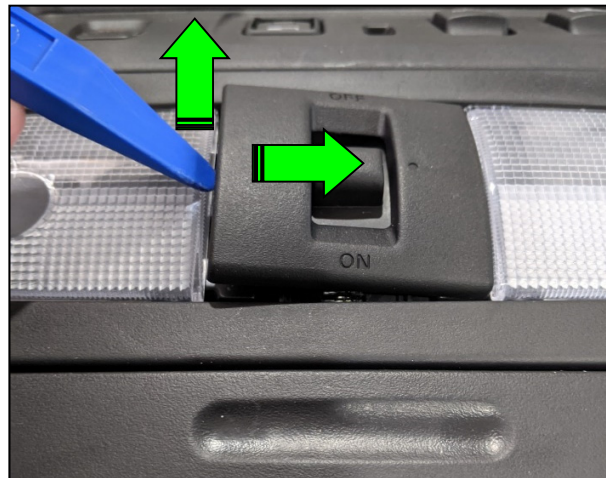


Figure 2

3. Remove the old trim bezel and knob switch (they will not be reused).



Figure 3

4. Install the new knob switch assembly into the lamp unit.

HINT: Be sure to place the knob switch assembly between the two guide ribs in the lamp housing assembly.



Figure 4

5. Install the new trim bezel.

IMPORTANT: Align the rib side of the new trim bezel with the non-rib side of the lamp housing assembly (Figure 5 and Figure 6).



Figure 5

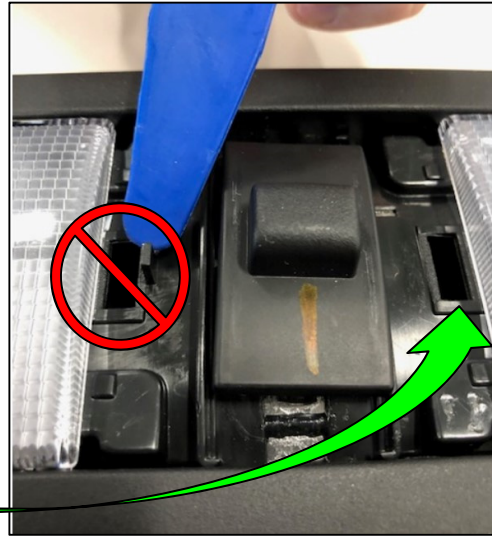


Figure 6

6. Carefully press down on one side of the trim bezel to engage the snap lock.



Figure 7

7. Carefully press down on the opposite side of the trim bezel to engage the final snap lock.



Figure 8

8. If the front map lamp was removed from the vehicle for service, reinstall the lamp in the reverse order of removal.

Test Lamp Operation

HINT: Conduct steps 9–13 by operating the lamp switch knob slowly.

9. Move the lamp switch knob to the OFF position.
 - Verify the lamp is not illuminated.
10. Move the lamp switch knob to the center (DOOR) position.
 - Verify the lamp is illuminated only when a door is open.
11. Move the lamp switch knob to the ON position.
 - Verify the lamp is illuminated.
12. Move the lamp switch knob to the center (DOOR) position.
 - Verify the lamp is illuminated only when a door is open.
13. Move the lamp switch knob to the OFF position.
 - Verify the lamp is not illuminated.
14. Perform steps 9–13 again by operating the lamp switch knob quickly.
15. Activate the push lenses on the right-hand side and the left-hand side of the lamp assembly to ensure there is no sticking of the lenses and each side illuminates.

PARTS INFORMATION

VEHICLE	DESCRIPTION	TRIM COLOR	PART NUMBER	QUANTITY
Frontier	COVER ASSY- PERSONAL LAMP (Map Lamp Trim Bezel)	Gray	26462-9FV3C	1
		Black	26462-9FV3B	1
	KNOB-PERSONAL LAMP (Map Lamp Knob Switch)	Gray	26463-9FV3C	1
		Black	26463-9FV3B	1
Titan/Titan XD	COVER ASSY- PERSONAL LAMP (Map Lamp Trim Bezel)	Gray	26462-9FV3A	1
		Black	26462-9FV3B	1
	KNOB-PERSONAL LAMP (Map Lamp Knob Switch)	Gray	26463-9FV3A	1
		Black	26463-9FV3B	1

CLAIMS INFORMATION

Submit a Primary Part (PP) type line claim using the following claims coding:

DESCRIPTION	PFP	OP CODE	SYM	DIA	FRT
Front Map Lamp Switch and Trim Bezel Replacement	(1)	RX9SAA	ZE	32	0.2

- (1) Reference the electronic parts catalog and use the Map Lamp Assembly (26430-*****) as the Primary Failed Part (PFP).

AMENDMENT HISTORY

PUBLISHED DATE	REFERENCE	DESCRIPTION
March 8, 2021	NTB21-019	Original bulletin published
February 11, 2022	NTB21-019A	APPLIED VEHICLES and PARTS INFORMATION revised
March 17, 2023	NTB21-019B	APPLIED VEHICLES revised
December 8, 2023	NTB21-019C	APPLIED VEHICLES and APPLIED DATES revised