



GROUP	MODEL
<b>Voluntary Emissions Service Campaign</b>	<b>2018-2021MY Stinger (CK) w/2.0L T-GDI ULEV</b>
NUMBER	DATE
<b>SC279</b>	<b>December 2023</b>

## VOLUNTARY EMISSIONS SERVICE CAMPAIGN

### THETA 2.0L T-GDI ECM SOFTWARE LOGIC IMPROVEMENT (SC279)

SUBJECT:

This bulletin provides information to upgrade the software logic of the engine control module (ECM) with an improved version on 2018-2021MY Stinger (CK) vehicles equipped with a Theta 2.0L T-GDI ULEV engine manufactured from September 29, 2017 through January 20, 2021. The subject vehicles may have engine calibrations that were not optimized for emissions standards under certain specific conditions, which may cause the vehicle to release air pollutants which exceed Federal and California standards (such as NMOG (Non-Methane Organic Gas) and CO (Carbon Monoxide) during IUVP (In-Use Verification Program). To ensure compliance with emissions regulations, apply the improved logic to the 'ENGINE' system using the KDS ECU Upgrade function as described in this bulletin. Before conducting the procedure, verify that the vehicle is included in the list of affected VINs.

Note: If the vehicle is in with DTC (P0088), refer to SC281 Bulletin BEFORE proceeding with SC279.



#### NOTICE

**Repair status for a VIN is provided on KDealer+ (Service → Warranty Coverage → Warranty Coverage Inquiry → Campaign Information). Not completed Recall / Service Action reports are available on KDealer+ (Consumer Affairs → Not Completed Recall → Recall VIN → Select Report), which includes a list of affected vehicles.**

Flowchart:

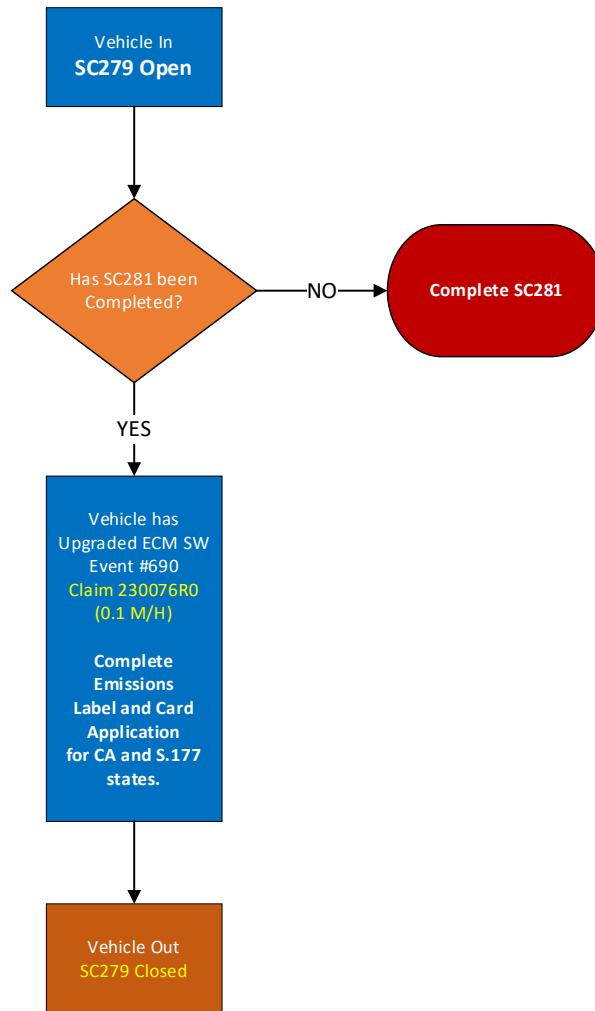
**ⓘ IMPORTANT**

**This Voluntary Emissions Campaign (SC279) must be completed AFTER completion of Safety Recall Campaign (SC281) in the same dealer visit. Follow the flowchart.**

To ensure compliance with emissions regulations, apply the improved logic to the 'ENGINE' system using the KDS ECU Upgrade function as described in this bulletin.

The ECU should be reprogrammed using the KDS download, as described in the SC281 bulletin.

Upgrade Event Name
690.CK Theta 2.0TGDI IUVP ECM Improvement and Safety Limp-Home Condition Update (P0088)



**Note:** After closing SC281 campaign (1<sup>st</sup>) on the affected vehicle, proceed to complete the instructions outlined in SC279 (2<sup>nd</sup>) before releasing the vehicle back to the customer. The affected VIN list is the same for both SC281 & SC279 campaigns.



SUBJECT:

**THETA 2.0L T-GDI ECM S/W LOGIC IMPROVEMENT (SC279)****ATTENTION: THE PROOF OF CORRECTION CARD AND CAMPAIGN COMPLETION LABEL ARE RESTRICTED ONLY TO DEALERS IN THE FOLLOWING STATES:**

California, Connecticut, Delaware, Massachusetts, Maine, Maryland, New Jersey, New York, Oregon, Pennsylvania, Rhode Island, Vermont, and Washington. See Parts Information below to order the Proof of Correction Card and Campaign Completion Label from the PDC.

**VEHICLE EMISSION RECALL - PROOF OF CORRECTION CARD**

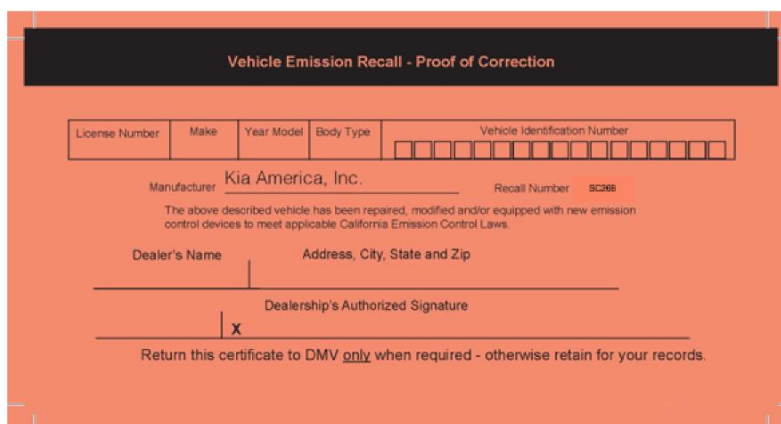
A Vehicle Emission Recall - Proof of Correction card must be filled out for all vehicles registered in California, Connecticut, Delaware, Massachusetts, Maine, Maryland, New Jersey, New York, Oregon, Pennsylvania, Rhode Island, Vermont, and Washington. Residents of these states, who own an affected vehicle, will be required to possess a Vehicle Emission Recall - Proof of Correction card as evidence of voluntary service campaign completion, when they apply for vehicle registration renewal.

**WHAT TO DO WITH THE CARD:**

The Vehicle Emission Recall - Proof of Correction card must be completed by the Dealership's Service Manager using a permanent ink pen. A fine point pen is recommended. When filling in the information, copy the information directly from the vehicle, not the repair order. **ALL INFORMATION MUST BE PRINTED AND NEAT.**

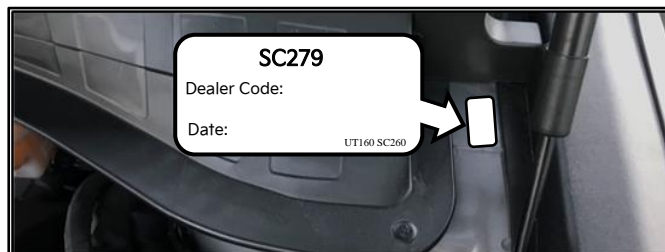
**NOTE: DO NOT COMPLETE THE CARD UNLESS THE SERVICE CAMPAIGN WORK IS COMPLETED.**

The copy of the card shown below indicates the areas to be filled in. Each area must be filled in. The completed card should be given to the owner of the vehicle upon completion of the Campaign and placement of the Campaign Completion Label outlined below.


**FILLING OUT AND APPLYING THE CAMPAIGN COMPLETION LABEL (CA and S.177 STATES ONLY):**

The dealer must fill in the Dealer Code and Date information fields on the Campaign Completion Label. Once complete, affix the campaign completion label under the hood of the vehicle, as shown below.

**CA and S.177 States Only:** Apply SC279 Campaign Completion Label onto the body in the area next to the shock tower, as shown. **NOTE: Be sure to clean the mounting surface to ensure proper label adhesion.**





SUBJECT:

**THETA 2.0L T-GDI ECM S/W LOGIC IMPROVEMENT (SC279)****AFFECTED VEHICLE RANGE:**

Model	Production Date Range
Stinger (CK) 2.0L T-GDI	September 29, 2017 to January 20, 2021

**REQUIRED PART:**

Tool Name	Part Number	Figure	Comments
Campaign Completion Label	UT160 SC279	 The image shows a rectangular label with a black border. At the top, it says 'SC279'. Below that, it says 'Dealer Code:' followed by a blank space. At the bottom, it says 'Date:' followed by 'UT160 SC268'.	1
Vehicle Emissions Recall Proof of Correction Card	UT161 SC279	 The image shows a rectangular card with a red border. It contains text and a grid of boxes, typical of a recall proof of correction card.	1

**NOTE:** Completion Label and Proof of Correction Card only required for vehicles registered in CA, CT, DE, MA, MD, ME, NJ, NY, OR, PA, RI, VT, and WA "States" only.

**WARRANTY INFORMATION:**

**N Code: N99 C Code: C99**

MY	Claim Type	Causal P/N	Qty.	Repair Description	Labor Op Code	Op Time	Replacement P/N	Qty.
18-21MY	R	226X2 2CH00	0	(SC279) Confirmation of ECM Software Logic Improvement <i>(Completed under SC281)</i>	230076R0	0.1 M/H	N/A	0

**NOTICE**

VIN inquiry data for this repair is provided for tracking purposes only. Kia retailers should reference **SC279** when accessing the KDealer+ system.