



SIB 52 17 23 SEAT MODULE INOPERATIVE, FUSE BLOWN

2023-12-11

 THIS REPAIR IS MOBILE FRIENDLY

MODEL

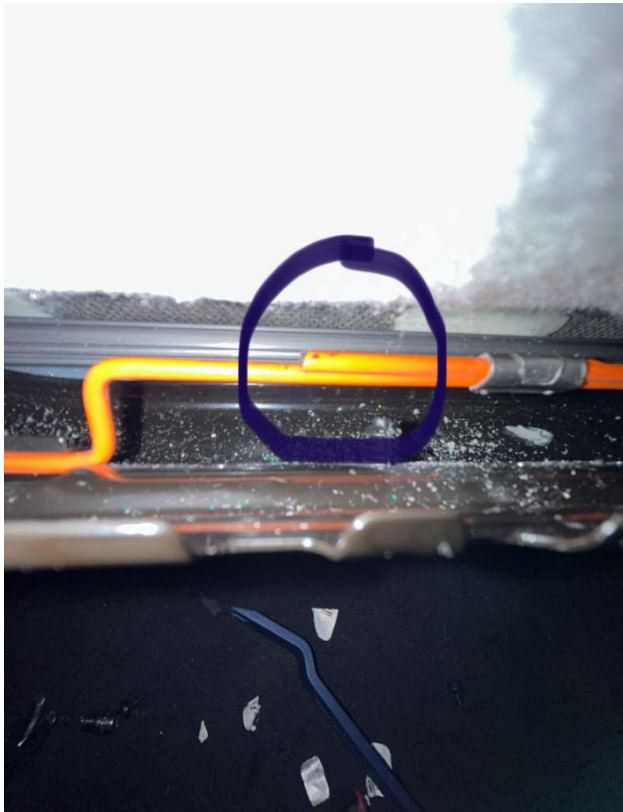
E-Series	Model Description	Affected Option Code
F92	8 Series "M" Coupe	Vehicle with M Sport Seats
F93	8 Series "M" Gran Coupe	
G01 LCI	X1 Sports Activity Vehicle	
G20	3 Series Sedan	
G22	4 Series Coupe	
G26	4 Series Gran Coupe	
G83	M4 Cabrio	

SITUATION

Customer states one of the front seats is inoperative. The seat heater and power supply are inoperative. During the vehicle test, the seat module does not respond. The power supply fuse for the seat module is found to have blown.

CAUSE

Seat harness short-circuits against the orange spring assembly at the bottom of the seat backrest.



CORRECTION

Locate the harness damage. Repair the harness, if possible; or replace if necessary. Put felt tape around the orange seat spring ends to prevent future damage.

PROCEDURE



Remove the seat backrest cover. Check the wiring harness as it routes along the bottom of the seatback to observe if it is shorting on the orange spring assembly at the bottom of the seat backrest.



Repair the harness if possible, or replace it if necessary.

Put felt tape around the orange seat spring ends (circled) to prevent future damage.

The two ends of the orange springs are held together by a spring clip. The spring ends can rotate around one another within the spring clip so extend the felt tape over both ends of the spring and their retainer clip to prevent movement.

Replace the fuse.

PARTS INFORMATION

Parts are only required in those situations where it is determined that there is an issue with the corresponding system's components. In these cases, repair the vehicle as necessary to address the specific issue found.

To determine the part number that applies to the specific vehicle being repaired, enter the VIN/chassis number into either ETK or AIR, this will consider the specific equipment and/or options that are fitted to the vehicle.

Part Number	Description	Quantity
50 20 0 007 010	Felt	1

Copyright ©2023 BMW of North America, Inc.

CLAIM INFORMATION

This Service Information bulletin provides technical, diagnostic, and repair-related information.

Damage caused by outside influences are not covered under the BMW limited warranties.

FEEDBACK REGARDING THIS BULLETIN

Technical Feedback	To submit feedback for the technical topic of this bulletin: Submit your feedback in the rating box at the top of this bulletin
Warranty Feedback	To submit feedback for the CLAIMS section of this bulletin: Submit an IDS ticket to the Warranty Department, or use the chat available in the Warranty Documentation Portal
Parts Feedback	To submit feedback for the PARTS section of this bulletin: Submit an IDS ticket to the Parts Department

