

REFERENCE:	TSB: 23-104-23 GROUP: 23 - Body	Date:	October 7, 2023	REVISION:	-
VEHICLES AFFECTED:	2015 - 2018 (BU) Jeep Renegade 2019 - 2023 (BV) Jeep Renegade This bulletin applies to BV vehicles built on or before October 28, 2022 (MDH 1028XX).	MARKET APPLICABILITY:			
CUSTOMER SYMPTOM:	One or both front door side window seals are deformed Fig. 1 .				
CAUSE:	Manufacturing issue.				

1.

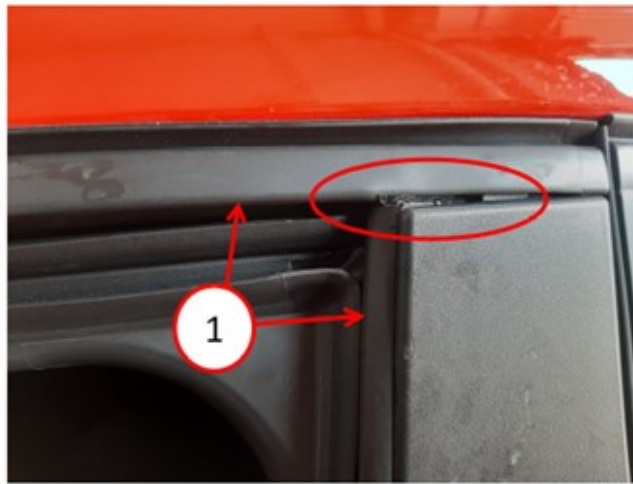


Fig. 1
Deformed Front Door Window Seal

1 -One Piece Window Seal (Glass Run) To Inspect And Replace (If Required)

REPAIR SUMMARY:

This bulletin involves replacing the window seal and glass.

CLAIMS DATA:

Labor Operation No:	Labor Description	Skill Category	Labor Time
23-33-20-9Z	Replace One Front Door Run Seal and Glass (1 - Semi-Skilled)	6 - Electrical and Body Systems	0.8 Hrs.
23-33-20-AA	Replace Both Front Door Run Seal and Glass (1 - Semi-Skilled)	6 - Electrical and Body Systems	1.6 Hrs.
Failure Code	CC	Customer Concern	

The dealer must use failure code CC with this Technical Service Bulletin.

- If the customer's concern matches the SYMPTOM identified in the Technical Service Bulletin, failure code CC is to be used.
- When utilizing this failure code, the 3C's (customer's concern, cause and correction) must be provided for processing Technical Service Bulletin flash/reprogramming conditions.

SPARE PARTS:

Qty	Part No.	Description	Notes
1 (AR)	52225354 68632874AA - Mopar	Glass, Front Door	Left Front Door Glass
1 (AR)	52225355 68632883AA - Mopar	Glass, Front Door	Right Front Door Glass
1 (AR)	52095965 68417348AA - Mopar	W/Strip, Front Door Flush Glass	Left Front Door Glass Seal (Glass Run)
1 (AR)	52095964 68417437AA - Mopar	W/Strip, Front Door Flush Glass	Right Front Door Glass Seal (Glass Run)

SPECIAL TOOLS/EQUIPMENT:

Description	Ref. No.	Notes
Trim Stick	C-4755	Essential Tool

DIAGNOSIS:

If the customer describes any of the symptom listed above in the customer symptom section, perform the Repair Procedure.

REPAIR PROCEDURE:

NOTE: Do not just replace the door window seal (glass run) for this Repair Procedure. The door glass MUST also be replaced to complete repair.

1. Replace the front side door glass and door glass seals (glass runs) as required. Refer to the detailed service procedures available in DealerCONNECT> Service Library under: Service Info>23 - Body / Doors - Front / Glass, Door / Removal and Installation.

POLICY:

Reimbursable within the provisions of the warranty.

This bulletin is supplied as technical information only and is not an authorization for repair. No part of this publication may be reproduced, stored in a retrieval system, or transmitted, in any form or by any means, electronic, mechanical, photocopying, or otherwise, without written permission of FCA US LLC.