



I N F I N I T I

Nissan Group of the Americas  
Copyright©

# TECHNICAL SERVICE BULLETIN

Classification:

EC23-009

Reference:

ITB23-026

Date:

November 6, 2023

## MIL IS ON WITH DTC P0300 STORED IN THE ECM

**APPLIED VEHICLES:** 2022-2023 QX60 (L51)

**APPLIED ENGINES:** VQ35DD

### IF YOU CONFIRM

The MIL is ON with DTC P0300 for “MULTI CYL MISFIRE” stored in the ECM.

### ACTION

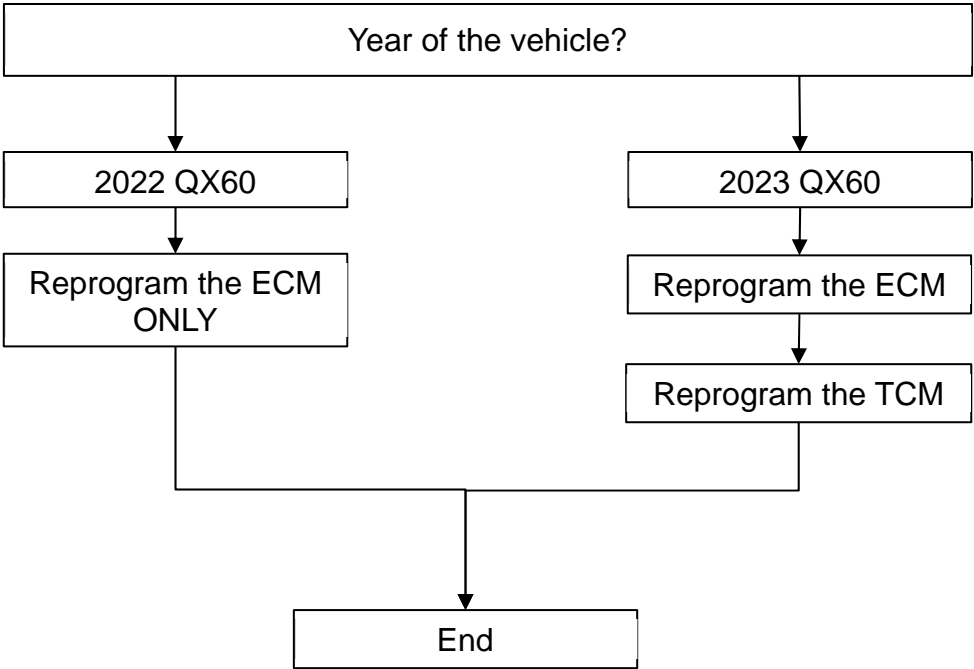
Refer to the **SERVICE PROCEDURE** in this bulletin to:

1. Determine applicable model year specific **SERVICE PROCEDURE** with the **Repair Overview** on page 2.
2. Confirm the current ECM and TCM part numbers.
3. Reprogram the ECM and/or the TCM, if applicable.

**IMPORTANT:** The purpose of **ACTION** (above) is to give you a quick idea of the work you will be performing. You **MUST** closely follow the entire **SERVICE PROCEDURE** as it contains information that is essential to successfully completing this repair.

Bulletins are intended for use by qualified technicians, not 'do-it-yourselfers'. Qualified technicians are properly trained individuals who have the equipment, tools, safety instruction, and know-how to do a job properly and safely. **NOTE:** If you believe that a described condition may apply to a particular vehicle, **DO NOT** assume that it does. See your Infiniti retailer to determine if this applies to your vehicle.

# Repair Overview



## SERVICE PROCEDURE

### ECM Reprogram

1. Using CONSULT-III plus, confirm the current ECM part number and write it on the repair order.
  - If it matches one of the part numbers in **Table 1**, see the **NOTICE** below and then continue to step 2 on page 4.
  - If it does not match one of the part numbers in **Table 1**, ECM reprogramming does not apply.
    - For 2023 models, proceed to **TCM Reprogram** on page 4.
    - For 2022 models refer to ASIST for further diagnostic and repair information.

**Table 1**

MODEL	CURRENT ECM PART NUMBER: 23761 -
2022 QX60	6SD4B, 6SD4C, 6SD4D, 6SD4E, 6SD5B, 6SD5C, 6SD5D, 6SD5E 6SD6B, 6SD6C, 6SD6D, 6SD6E, 6SD7B, 6SD7C, 6SD7D, 6SD7E
2023 QX60	6SF0D, 6SF0E, 6SF1D, 6SF1E, 6SF2E, 6SJ1A, 6SJ1B, 6SJ1C 6SJ1D, 6SJ2A, 6SJ2B, 6SJ2C, 6SJ3A, 6SJ3B, 6SJ4A, 6SJ4B

#### **NOTICE**

Perform the following before starting the reprogramming procedure to prevent damage to the control unit.

- Connect the AC Adapter to the CONSULT PC.
- Connect the CONSULT PC to the Internet via Wi-Fi.
- Ensure ASIST on the CONSULT PC has been synchronized (updated) to the current date and all CONSULT software updates (if any) have been installed.

#### **HINT:**

- Take the vehicle for a 10 minute drive in order to meet the following Idle Air Volume Learning conditions:
  - Engine coolant temperature: 70 - 100°C (**158 - 212°F**)
  - Battery voltage: More than 12.9 V (At idle)
  - Transmission: Warmed up
- When reprogramming is complete, you will be required to perform **Throttle Valve Closed Position, Idle Air Volume Learning, Accelerator Closed Position, and DTC Erase.**
- Turn OFF all external Bluetooth® devices (e.g., cell phones, printers, etc.) within range of the CONSULT PC and the VI. If Bluetooth® signal waves are within range of the CONSULT PC or VI during reprogramming, the reprogramming may be interrupted.
- Turn the hazard warning lamps ON.
  - Turn OFF all other vehicle electrical loads such as exterior lights, interior lights, HVAC, blower, rear defogger, audio, NAVI, seat heater, steering wheel heater, etc. If electrical loads remain ON, the ECM may be damaged.
- Connect a battery maintainer or smart charger, set to reflash mode or a similar setting, to ensure the battery voltage stays between 12.0 V and 15.5 V.

2. Reprogram the ECM.

**HINT:** If you are not familiar with the reprogramming procedure, [click here](#). This will link you to the "**CONSULT-III PLUS REPROGRAMMING FOR ENGINE OR TRANSMISSION CONTROL MODULE (ECM OR TCM)**" general procedure.

3. After completing **Erase All DTCs**, print a copy of the CONSULT screen showing the before and after part numbers of the control unit and attach it to the repair order.

### TCM Reprogram (2023 QX60 only)

4. Using CONSULT-III plus, confirm the current TCM part number and write it on the repair order.
  - If it matches one of the part numbers in **Table 2**, continue to step 5 below.
  - If it does not match one of the part numbers in **Table 2**, this reprogram does not apply. If either an ECM or TCM reprogram were not available, refer to ASIST for further diagnostic and repair information.

**Table 2**

MODEL	CURRENT TCM PART NUMBER: 31039 -
2023 QX60	6SV0A, 6SV0C, 6TH9A, 6TH9C

### NOTICE

Perform the following before starting the reprogramming procedure to prevent damage to the control unit.

- Connect the AC Adapter to the CONSULT PC.
  - Connect the CONSULT PC to the Internet via Wi-Fi.
  - Ensure ASIST on the CONSULT PC has been synchronized (updated) to the current date and all CONSULT software updates (if any) have been installed.
  - Turn OFF all external Bluetooth® devices (e.g., cell phones, printers, etc.) within range of the CONSULT PC and the VI. If Bluetooth® signal waves are within range of the CONSULT PC or VI during reprogramming, the reprogramming may be interrupted.
  - Turn the hazard warning lamps ON.
    - Turn OFF all other vehicle electrical loads such as exterior lights, interior lights, HVAC, blower, rear defogger, audio, NAVI, seat heater, steering wheel heater, etc. If electrical loads remain ON, the TCM may be damaged.
  - Connect a battery maintainer or smart charger, set to reflash mode or a similar setting, to ensure the battery voltage stays between 12.0 V and 15.5 V.
5. Reprogram the TCM.

**HINT:** If you are not familiar with the reprogramming procedure, see the hyperlink in step 2 **HINT**. This will link you to the "**CONSULT-III PLUS REPROGRAMMING FOR ENGINE OR TRANSMISSION CONTROL MODULE (ECM OR TCM)**" general procedure.
  6. After completing **Erase All DTCs**, print a copy of the CONSULT screen showing the before and after part numbers of the control unit and attach it to the repair order.

## CLAIMS INFORMATION

Submit a Primary Part (PP) type line claim using the following claims coding:

DESCRIPTION	PFP	OP CODE	SYM	DIA	FRT
Reprogram ECM	(1)	DE97AA	ZE	32	(2)
Reprogram TCM		JE99AA			

- (1) Reference the electronic parts catalog and use the ECM (23703-\*\*\*\*\*) as the Primary Failed Part (**PFP**).
- (2) Reference the current Infiniti Warranty Flat Rate Manual and use the indicated Flat Rate Time (**FRT**).

## AMENDMENT HISTORY

PUBLISHED DATE	REFERENCE	DESCRIPTION
November 6, 2023	ITB23-026	Original bulletin published