



Countries: CANADA, MEXICO, UNITED STATES
Availability: ISIS, Bus ISIS, FleetISIS, NotSIR
Major System: ELECTRIC VEHICLE
Current Language: English
Other Languages: NONE
Viewed: 78

Document ID: IK2300023
Revision: 1
Created: 11/16/2023
Last Modified: 11/16/2023
Author: Eric George

[Less Info](#)

Hide Details

Coding Information

Copy Link 	Copy Relative Link 	Bookmark View My Bookmarks	Add to Favorites 	Print 	Provide Feedback 	Helpful 3	Not Helpful 0
----------------------	-------------------------------	--	-----------------------------	------------------	-----------------------------	-------------------------	-----------------------------

Title: EV CE Bus Electric Heater Fuse Inspection and Heater Control Adjustment

Applies To: EV CE Bus

CHANGE LOG

Please refer to the change log text box below for recent changes to this article:

11/16/23 - Initial Article Release

DESCRIPTION

EV CE bus electric heater fuse inspection and heater control valve adjustment procedures.

SYMPTOMS

Customer Observations or Concerns:

No or low cabin heat conditions.

Diagnostic Trouble Code(s) & Dashboard Indicator Light(s):

DTC/Light	Description
SPN 5574 FMI 7	Auxiliary Cab Heater : Mechanical System Not Responding Or Out Of Adjustment

SERVICE PARTS INFORMATION

Description	Part Number	Quantity Required	Notes
10 Amp ATA fuse	Supplied Locally	1	

REPAIR STEPS

Electric Heater Fuse Inspection:

1. Locate Power Distribution Module 1 (PDM 1) under the hood Figure 1.

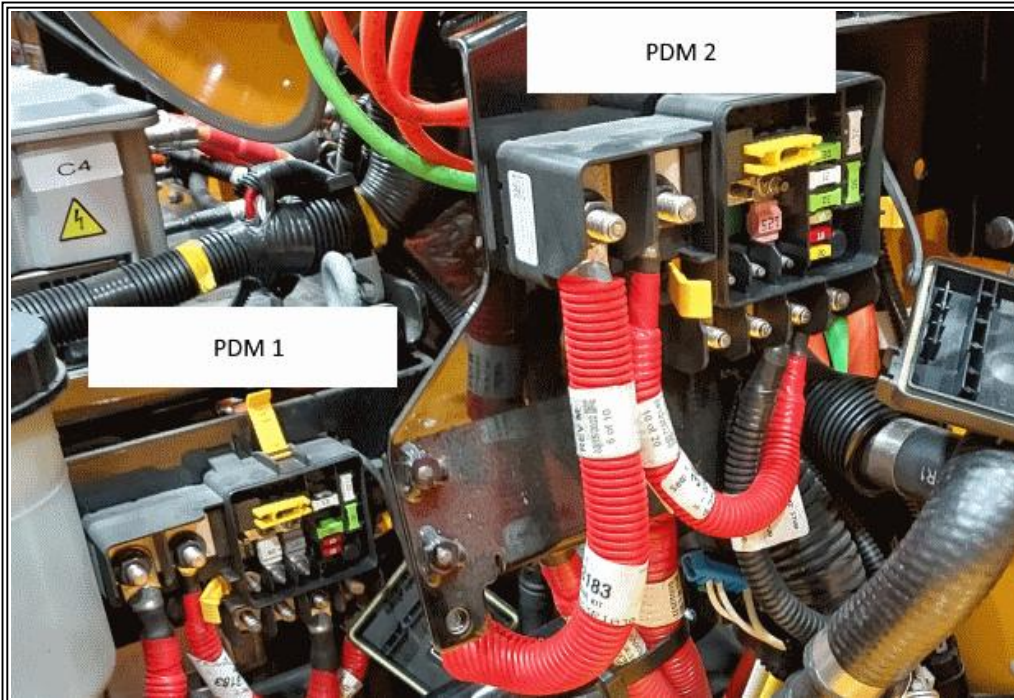


Figure 1: Power Distribution Module (PMD1) Location

2. Inspect for fuse 3D as shown in Figure 2.
3. If the fuse is missing, insert a 10 Amp ATA fuse in the 3D location

CAUTION

Replace fuses with same AMP rating. See Operator's Manual.

Fuse 3D - Electric Heat Climate Control Fuse - 10 A

The left-hand module (PDM 1) has the following fuses:

Location	Component	Fuse Rating
1A	Radiator Fan	150A
1B	HVAC Fuse	80A
1C	Not Used	-
2A	Not Used	-
2B	Not Used	-
2C	Heated Air Dryer	25A
2D	Not Used	-
2E	Cabin Heat Pump	30A
3A	Not Used	-
3B	Not Used	-
3C	Not Used	-
3D	Climate Control	10A
3E	Battery Management	10A
3F	Not Used	-

Figure 2: PDM 1 3D Electric Heater Fuse Location

Heater Control Valve Inspection / Adjustment Procedures:

1. Remove the driver's heater access panel as shown in Figure 3
2. Remove screws as shown and remove the panel.

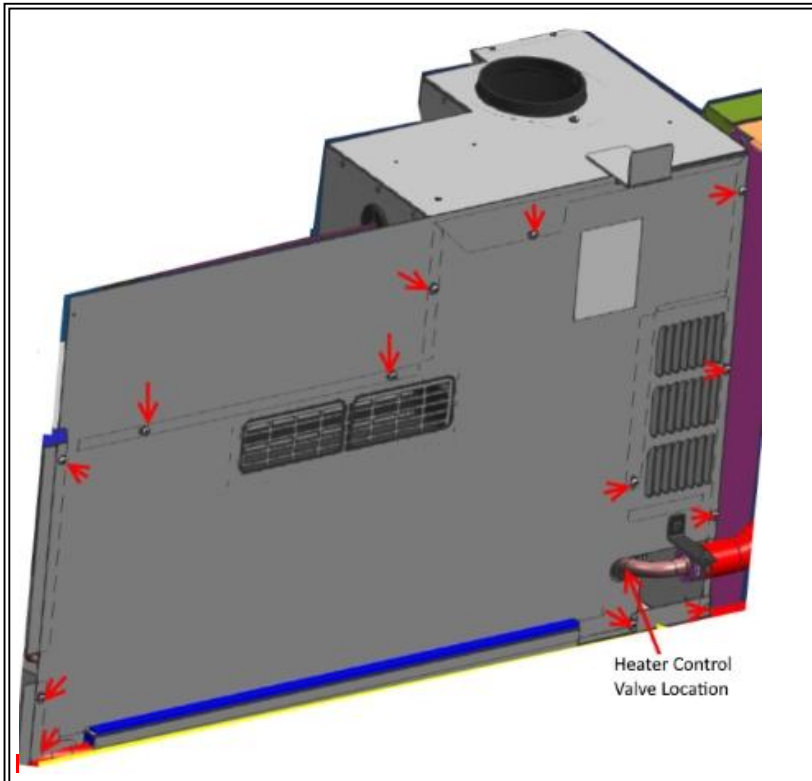


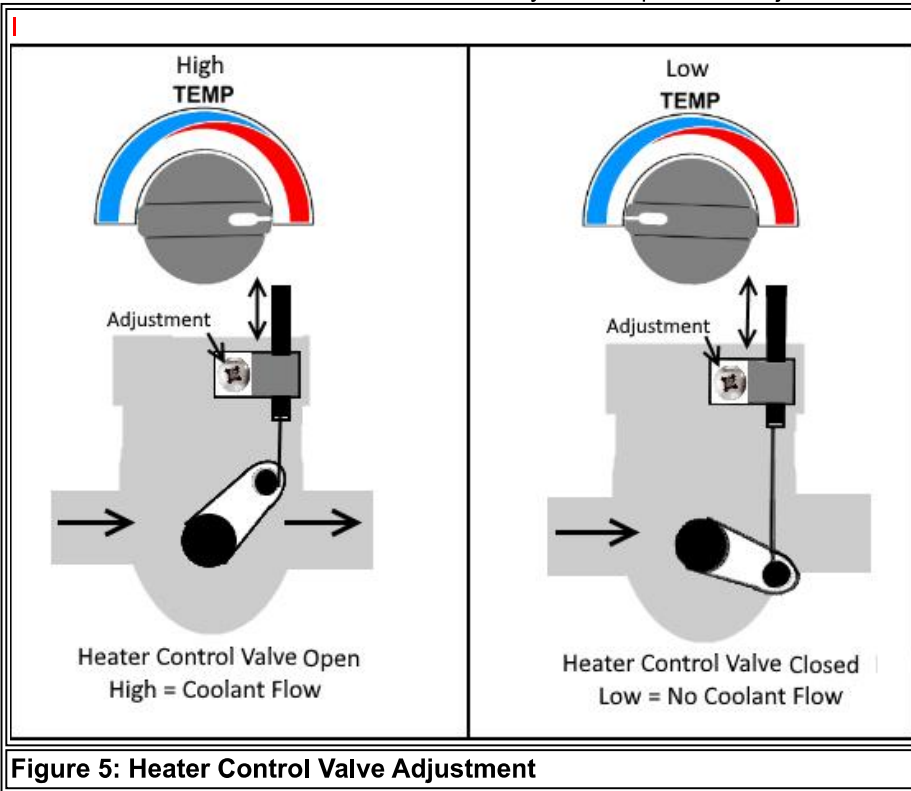
Figure 3: Driver's Heater Access Panel

3. Locate the heater control valve. Figure 4



Figure 4: Heater Control Valve Location

4. Driver's heater control temperature (TEMP) in the high clockwise position.
5. Check the heater control valve is in the fully **open** position . Adjust the cable as needed. Figure 5
6. Driver's heater control temperature (TEMP) in the low counter clockwise position.
7. Check the heater control valve is in the fully **closed** position. Adjust the cable as needed. Figure 5



WARRANTY INFORMATION

Warranty Claim Coding:

Refer to the [Warranty Coding Manual](#) for Group and Noun Codes.

Standard Repair Time(s):

Refer to the [SRT Manual](#) for Repair Times

OTHER RESOURCES

[Master Service Information Site](#)

 Hide Details

Feedback Information

Viewed: 77

Helpful: 3

Not Helpful: 0

No Feedback Found