

Subject: FOGGY HEADLIGHTS (INNER CONDENSATION) AND WATER SPOTS INSIDE HEADLIGHT LENSES	Bulletin No.: 09-041/23
	Last Issued : 11/27/2023

BULLETIN NOTES

APPLICABLE MODEL(S)/VINS

US/Canada Spec.:

2017-2020 CX-5 vehicles with VINs lower than JM3 KF**** ** 869654 (Produced before Aug. 24, 2020)

2021-2022 CX-5 vehicles with VINs lower than JM3 KF**** ** 649504 (Produced before Aug. 1, 2022)

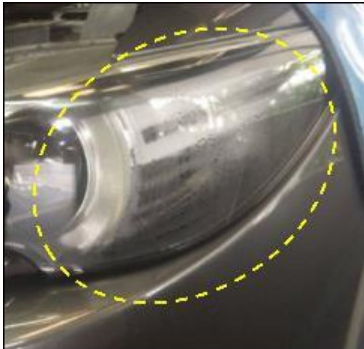
2023 CX-5 vehicles with VINs lower than JM3 KF**** ** 271927 (Produced before Jun. 1, 2023)

Mexico Spec.:

2018-2020 CX-5 vehicles with VINs lower than JM3 KF**** ** 869654 (Produced before Aug. 24, 2020)

DESCRIPTION

Some customers may complain that the headlights get foggy or have water spots inside. This concern may be caused by the anti-fog coating not preventing inner condensation under certain situations. To eliminate this concern, the anti-fog coating performance was improved.



Customers having this concern should have their vehicle repaired using the following repair procedure.

REPAIR PROCEDURE

1. Verify the customer concern.
2. Replace the headlights with new ones according to the instructions on MGSS FRONT COMBINATION LIGHT

Page 1 of 3

CONSUMER NOTICE: The information and instructions in this bulletin are intended for use by skilled technicians. Mazda technicians utilize the proper tools/ equipment and take training to correctly and safely maintain Mazda vehicles. These instructions should not be performed by "do-it-yourselfers." Customers should not assume this bulletin applies to their vehicle or that their vehicle will develop the described concern. To determine if the information applies, customers should contact their nearest authorized Mazda dealership. Mazda North American Operations reserves the right to alter the specifications and contents of this bulletin without obligation or advance notice. All rights reserved. No part of this bulletin may be reproduced in any form or by any means, electronic or mechanical--including photocopying and recording and the use of any kind of information storage and retrieval system ---without permission in writing.

REMOVAL/INSTALLATION.

3. Verify the repair.

PARTS INFORMATION

Parts Number	Description	Qty.	Notes
KPF1-51-031C	LAMP UNIT-HEAD, RH	1	US and Canada
KPF1-51-041C	LAMP UNIT-HEAD, LH	1	
KPF3-51-031C	LAMP UNIT-HEAD, RH	1	AFS SIGNATURE: US and Canada
KPF3-51-041C	LAMP UNIT-HEAD, LH	1	
KL2J-51-031F	LAMP UNIT-HEAD, RH	1	With DRL: US and Canada
KL2J-51-041F	LAMP UNIT-HEAD, LH	1	

AFS: Adaptive Front Lighting System

DRL: Daytime Running Light

WARRANTY INFORMATION**NOTE:**

- This warranty information applies only to verified customer complaints on vehicles eligible for warranty repair.
- This repair will be covered under Mazda's New Vehicle Limited Warranty term.
- Additional diagnostic time cannot be claimed for this repair.

Warranty Type	A		
Symptom Code	98		
Damage Code	9F		
Causal Part No.	K***-51-031* and/or K***-51-041*		
Quantity	1 or 2		
Operation No. and Labor Hours	Without 360°view monitor system	One side	XXWFZARX / 0.6 Hrs.
		Both sides	XXWFZCRX / 0.8 Hrs.
	With 360°view monitor system,360° view monitor system screen display verification only	One side	XXWFZERX / 0.7 Hrs.

CONSUMER NOTICE: The information and instructions in this bulletin are intended for use by skilled technicians. Mazda technicians utilize the proper tools/ equipment and take training to correctly and safely maintain Mazda vehicles. These instructions should not be performed by "do-it-yourselfers." Customers should not assume this bulletin applies to their vehicle or that their vehicle will develop the described concern. To determine if the information applies, customers should contact their nearest authorized Mazda dealership. Mazda North American Operations reserves the right to alter the specifications and contents of this bulletin without obligation or advance notice. All rights reserved. No part of this bulletin may be reproduced in any form or by any means, electronic or mechanical--including photocopying and recording and the use of any kind of information storage and retrieval system ---without permission in writing.

		Both sides	XXWFZGRX / 0.9 Hrs.
	With 360°view monitor system, 360°view monitor system screen display verification and 360°view monitor system aiming	One side	XXWFZJRX / 0.8 Hrs.
		Both sides	XXWFZLRX / 1.0 Hrs.

CONSUMER NOTICE: The information and instructions in this bulletin are intended for use by skilled technicians. Mazda technicians utilize the proper tools/ equipment and take training to correctly and safely maintain Mazda vehicles. These instructions should not be performed by "do-it-yourselfers." Customers should not assume this bulletin applies to their vehicle or that their vehicle will develop the described concern. To determine if the information applies, customers should contact their nearest authorized Mazda dealership. Mazda North American Operations reserves the right to alter the specifications and contents of this bulletin without obligation or advance notice. All rights reserved. No part of this bulletin may be reproduced in any form or by any means, electronic or mechanical---including photocopying and recording and the use of any kind of information storage and retrieval system ---without permission in writing.