

# Technical Service Bulletin

Mazda North American Operations  
Irvine, CA 92618-2922



<b>Subject:</b>  ACCUMULATION OF WATER AND/OR SAND IN FUEL-FILLER LID BOX	<b>Bulletin No.:</b> 09-040/23
	<b>Last Issued :</b> 11/14/2023

## BULLETIN NOTES

This bulletin supersedes the previously issued bulletin(s) listed below. The changes are noted in Red text.

Previous TSBs:	Date(s) Issued:
09-029/21	10/08/21

## APPLICABLE MODEL(S)/VINS

2019-2021 Mazda3 (Japan built) vehicles with VINs lower than JM1BP\*\*\*\*\*330217 (produced before Jan. 6, 2021)  
2019-2021 Mazda3 (Mexico built) vehicles with VINs lower than 3MZ BP\*\*\*\*\*220143 (produced before Dec. 9, 2021)  
2020-2021 CX-30 (Mexico built) vehicles with VINs lower than 3MV DM\*\*\*\*\*320220 (produced before Dec. 9, 2021)

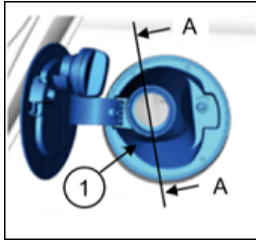
## DESCRIPTION

When opening the fuel-filler lid to refuel, some customers may notice water and/or sand in the fuel-filler lid box area. They may complain about dried sand causing poor appearance.

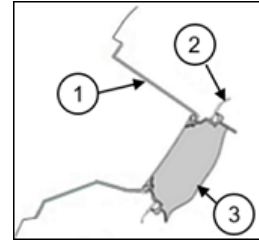


**NOTE:** The arrows in the image above indicate where the water and/or sand accumulates.

**CONSUMER NOTICE:** The information and instructions in this bulletin are intended for use by skilled technicians. Mazda technicians utilize the proper tools/ equipment and take training to correctly and safely maintain Mazda vehicles. These instructions should not be performed by "do-it-yourselfers." Customers should not assume this bulletin applies to their vehicle or that their vehicle will develop the described concern. To determine if the information applies, customers should contact their nearest authorized Mazda dealership. Mazda North American Operations reserves the right to alter the specifications and contents of this bulletin without obligation or advance notice. All rights reserved. No part of this bulletin may be reproduced in any form or by any means, electronic or mechanical--including photocopying and recording and the use of any kind of information storage and retrieval system ---without permission in writing.

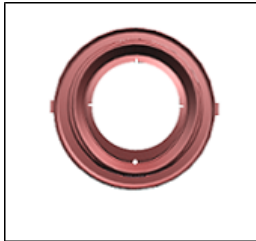


Section A-A  
(1) Fuel-filler lid box

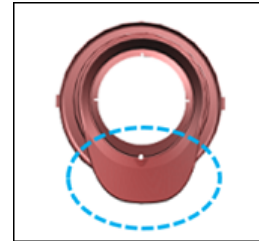


(1) Fuel-filler lid box  
(2) Body  
(3) Dust cover

Since the drain hole on the dust cover is located in an improper position, water may not be able to completely drain which results in the accumulation of water and sand. To eliminate this concern, the dust cover (below) has been modified to drain the water more easily.



OLD DUST COVER



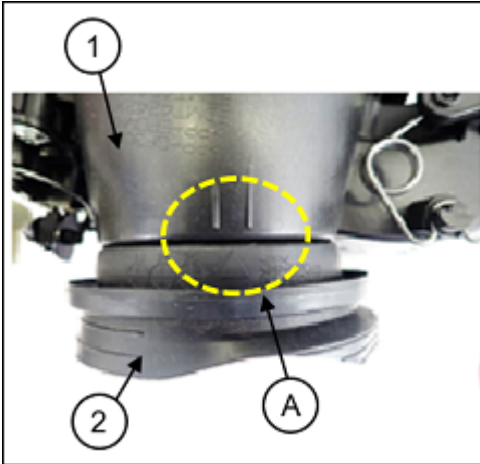
NEW DUST COVER

Customers having this concern should have their vehicle repaired using the following repair procedure.

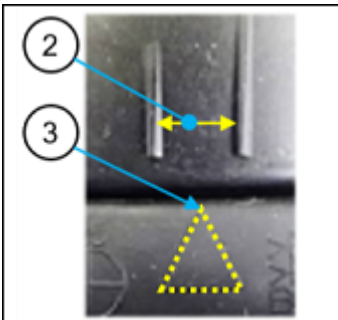
#### REPAIR PROCEDURE

1. Verify the customer concern.
2. Replace the dust cover with a modified one according to the instructions on MGSS online FUEL-FILLER LID LOCK ACTUATOR REMOVAL/INSTALLATION.

**CONSUMER NOTICE:** The information and instructions in this bulletin are intended for use by skilled technicians. Mazda technicians utilize the proper tools/ equipment and take training to correctly and safely maintain Mazda vehicles. These instructions should not be performed by "do-it-yourselfers." Customers should not assume this bulletin applies to their vehicle or that their vehicle will develop the described concern. To determine if the information applies, customers should contact their nearest authorized Mazda dealership. Mazda North American Operations reserves the right to alter the specifications and contents of this bulletin without obligation or advance notice. All rights reserved. No part of this bulletin may be reproduced in any form or by any means, electronic or mechanical---including photocopying and recording and the use of any kind of information storage and retrieval system ---without permission in writing.



- (1) Fuel-filler lid box  
(2) Dust cover



Detail of area "A" from the image above.

**NOTE:** Assemble the parts so that the top of the triangle (3) is located between the parallel lines (2).

3. Verify the proper operation of the fuel filler door (including locking / unlocking) after completing the repair.

#### PARTS INFORMATION

Parts Number	Description	Qty.	Notes
BCKA-42-240A	Dust Cover	1	Mazda3 / CX-30

#### WARRANTY INFORMATION

**NOTE:**

- This warranty information applies only to verified customer complaints on vehicles eligible for warranty repair.
- This repair will be covered under Mazda's New Vehicle Limited Warranty term.
- Additional diagnostic time cannot be claimed for this repair.

**CONSUMER NOTICE:** The information and instructions in this bulletin are intended for use by skilled technicians. Mazda technicians utilize the proper tools/ equipment and take training to correctly and safely maintain Mazda vehicles. These instructions should not be performed by "do-it-yourselfers." Customers should not assume this bulletin applies to their vehicle or that their vehicle will develop the described concern. To determine if the information applies, customers should contact their nearest authorized Mazda dealership. Mazda North American Operations reserves the right to alter the specifications and contents of this bulletin without obligation or advance notice. All rights reserved. No part of this bulletin may be reproduced in any form or by any means, electronic or mechanical--including photocopying and recording and the use of any kind of information storage and retrieval system ---without permission in writing.

Warranty Type	A
Symptom Code	77
Damage Code	99
Part Number Main Cause	****-42-240*
Quantity	1
Operation Number / Labor Hours:	<p align="center"><b>Mazda3</b>  XXT4GARX / 1.1 Hrs. - (4 Dr.)  XXT4GBRX / 1.1 Hrs. - (5 Dr. 2WD)  XXT4GCRX / 1.2 Hrs. - (5 Dr. 4WD)</p>
	<p align="center"><b>CX-30 (US)</b>  XXT4GKRX / 1.2 Hrs. - (2.5L with cylinder deactivation)  XXT4GLRX / 1.1 Hrs. - (2.5L without cylinder deactivation)</p>
	<p align="center"><b>CX-30 (Mexico)</b>  XXT4GERX / 1.1 Hrs. - (2.0L 2WD with cylinder deactivation)  XXT4GGRX / 1.1 Hrs. - (2.0L 2WD without cylinder deactivation)  XXT4GFRX / 1.1 Hrs. - (2.0L 4WD with cylinder deactivation)</p>

**CONSUMER NOTICE:** The information and instructions in this bulletin are intended for use by skilled technicians. Mazda technicians utilize the proper tools/ equipment and take training to correctly and safely maintain Mazda vehicles. These instructions should not be performed by "do-it-yourselfers." Customers should not assume this bulletin applies to their vehicle or that their vehicle will develop the described concern. To determine if the information applies, customers should contact their nearest authorized Mazda dealership. Mazda North American Operations reserves the right to alter the specifications and contents of this bulletin without obligation or advance notice. All rights reserved. No part of this bulletin may be reproduced in any form or by any means, electronic or mechanical---including photocopying and recording and the use of any kind of information storage and retrieval system ---without permission in writing.