

<b>Subject:</b>  WRINKLES ON LEATHER FRONT SEAT CUSHION TRIM	<b>Bulletin No.:</b> 09-043/23
	<b>Last Issued :</b> 11/30/2023

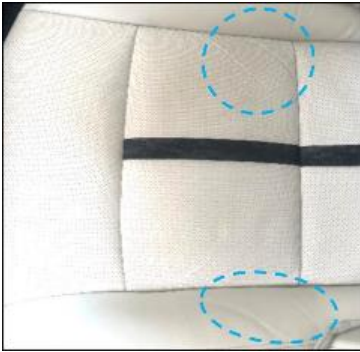
## BULLETIN NOTES

### APPLICABLE MODEL(S)/VINS

2024 CX-90 (with leather seats)

### DESCRIPTION

Some customers may complain about wrinkles on leather seat cushion trim surface.



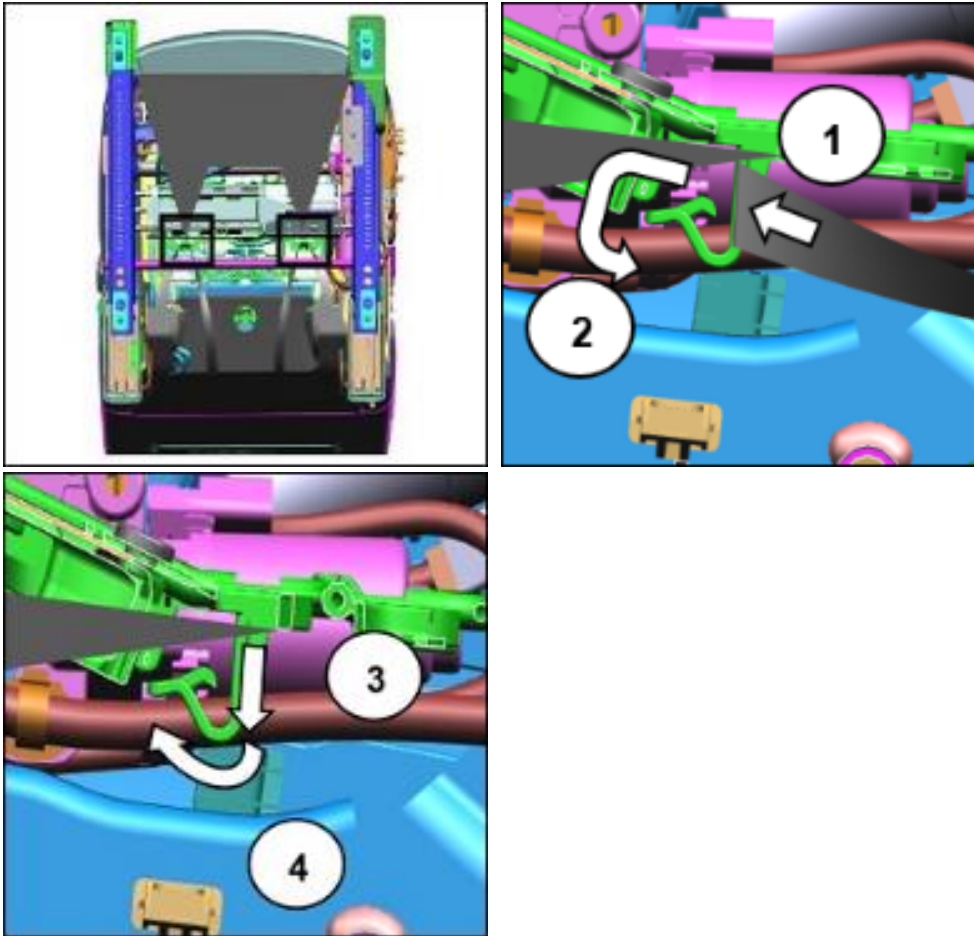
Customers having this concern should have their vehicle repaired using the following repair procedure.

### REPAIR PROCEDURE

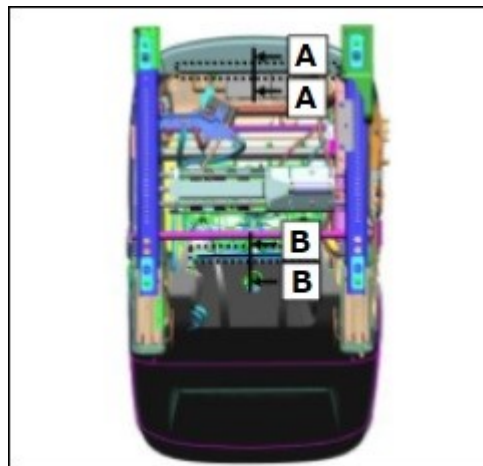
1. Verify the customer concern.
2. Replace the front seat cushion trim with a new one and if necessary, iron the installed new seat cushion trim to remove the wrinkles.
  - a. Remove the front seat (DRIVER-SIDE FRONT SEAT REMOVAL/INSTALLATION) or (PASSENGER-SIDE FRONT SEAT REMOVAL/INSTALLATION).
  - b. Remove the front seat side cover (FRONT SEAT SIDE COVER REMOVAL/INSTALLATION).

**CONSUMER NOTICE:** The information and instructions in this bulletin are intended for use by skilled technicians. Mazda technicians utilize the proper tools/ equipment and take training to correctly and safely maintain Mazda vehicles. These instructions should not be performed by "do-it-yourselfers." Customers should not assume this bulletin applies to their vehicle or that their vehicle will develop the described concern. To determine if the information applies, customers should contact their nearest authorized Mazda dealership. Mazda North American Operations reserves the right to alter the specifications and contents of this bulletin without obligation or advance notice. All rights reserved. No part of this bulletin may be reproduced in any form or by any means, electronic or mechanical---including photocopying and recording and the use of any kind of information storage and retrieval system ---without permission in writing.

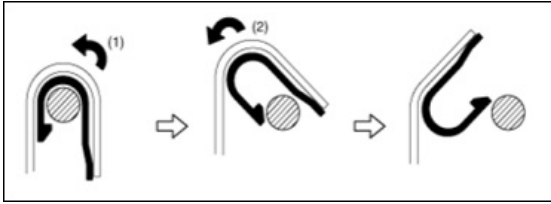
c. Remove the seat trim belts from the front seat cushion frame hook in the order as shown in the image (1 to 4).



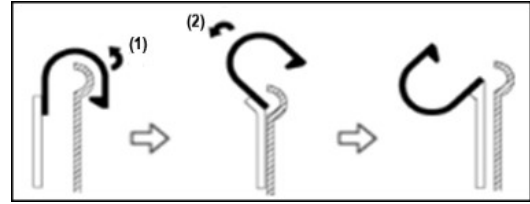
d. Remove the cushion trim hooks under the seat.



**CONSUMER NOTICE:** The information and instructions in this bulletin are intended for use by skilled technicians. Mazda technicians utilize the proper tools/ equipment and take training to correctly and safely maintain Mazda vehicles. These instructions should not be performed by "do-it-yourselfers." Customers should not assume this bulletin applies to their vehicle or that their vehicle will develop the described concern. To determine if the information applies, customers should contact their nearest authorized Mazda dealership. Mazda North American Operations reserves the right to alter the specifications and contents of this bulletin without obligation or advance notice. All rights reserved. No part of this bulletin may be reproduced in any form or by any means, electronic or mechanical---including photocopying and recording and the use of any kind of information storage and retrieval system ---without permission in writing.

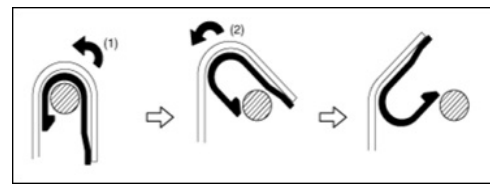
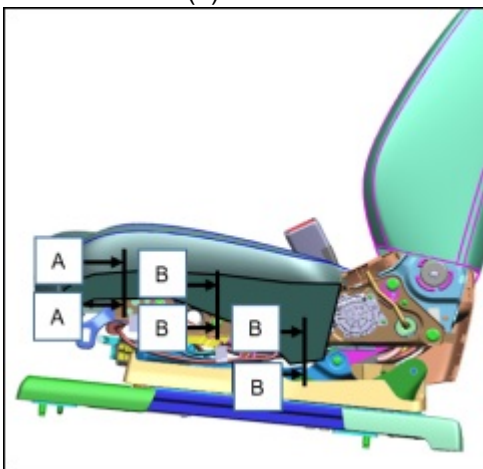


Sec. A-A  
 Front seat cushion frame  
 Front seat cushion trim  
 Hook

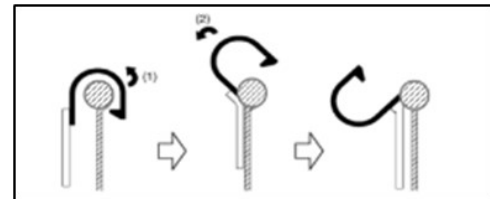


Sec. B-B  
 Spring  
 Front seat cushion trim  
 Hook

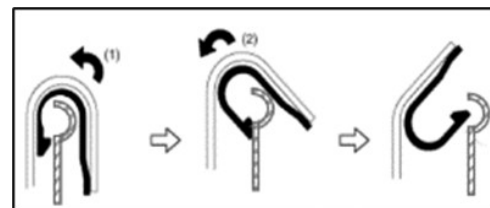
e. Free the front seat cushion trim from the cushion frame by uncoupling the side trim hooks and removing the fastener (3).



Sec. A-A  
 Front seat cushion frame  
 Front seat cushion trim  
 Hook

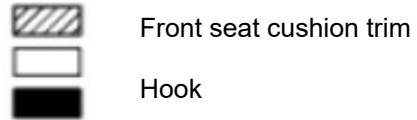
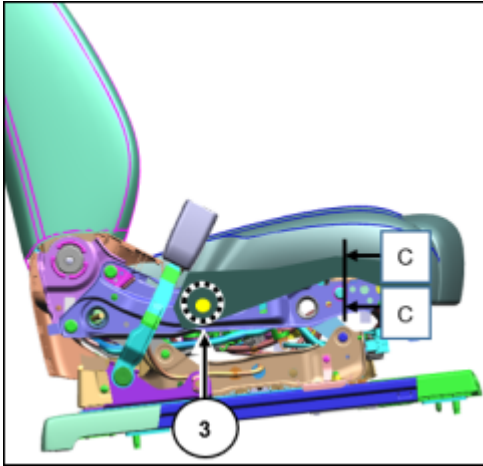


Sec. B-B  
 Spring  
 Front seat cushion trim  
 Hook

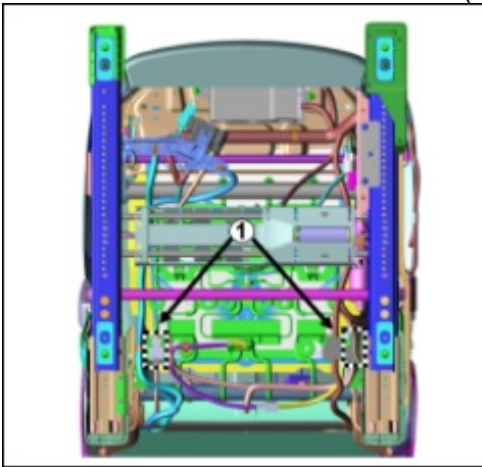


Sec. C-C  
 Front seat cushion frame

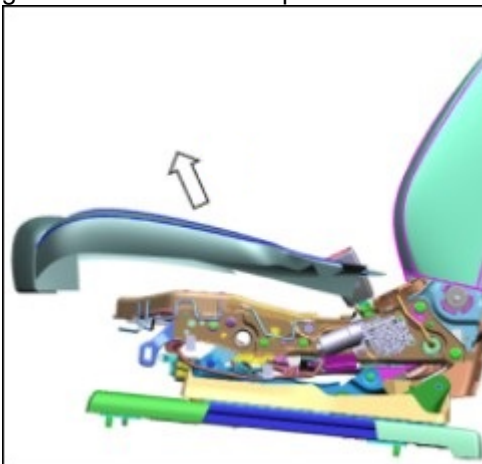
**CONSUMER NOTICE:** The information and instructions in this bulletin are intended for use by skilled technicians. Mazda technicians utilize the proper tools/ equipment and take training to correctly and safely maintain Mazda vehicles. These instructions should not be performed by "do-it-yourselfers." Customers should not assume this bulletin applies to their vehicle or that their vehicle will develop the described concern. To determine if the information applies, customers should contact their nearest authorized Mazda dealership. Mazda North American Operations reserves the right to alter the specifications and contents of this bulletin without obligation or advance notice. All rights reserved. No part of this bulletin may be reproduced in any form or by any means, electronic or mechanical--including photocopying and recording and the use of any kind of information storage and retrieval system ---without permission in writing.



f. Disconnect two electrical connectors (1).



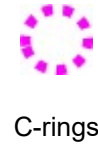
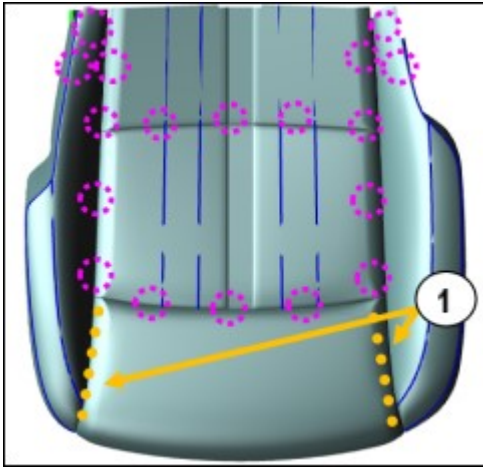
g. Remove the cushion pad and the trim from the frame.



**CONSUMER NOTICE:** The information and instructions in this bulletin are intended for use by skilled technicians. Mazda technicians utilize the proper tools/ equipment and take training to correctly and safely maintain Mazda vehicles. These instructions should not be performed by "do-it-yourselfers." Customers should not assume this bulletin applies to their vehicle or that their vehicle will develop the described concern. To determine if the information applies, customers should contact their nearest authorized Mazda dealership. Mazda North American Operations reserves the right to alter the specifications and contents of this bulletin without obligation or advance notice. All rights reserved. No part of this bulletin may be reproduced in any form or by any means, electronic or mechanical---including photocopying and recording and the use of any kind of information storage and retrieval system ---without permission in writing.

h. Remove the C-rings pictured below and detach the front cushion trim from the cushion pad.

**CAUTION:** When removing the cushion trim, be careful not to rip the interior velcro straps (1) off the cushion pad.



C-rings

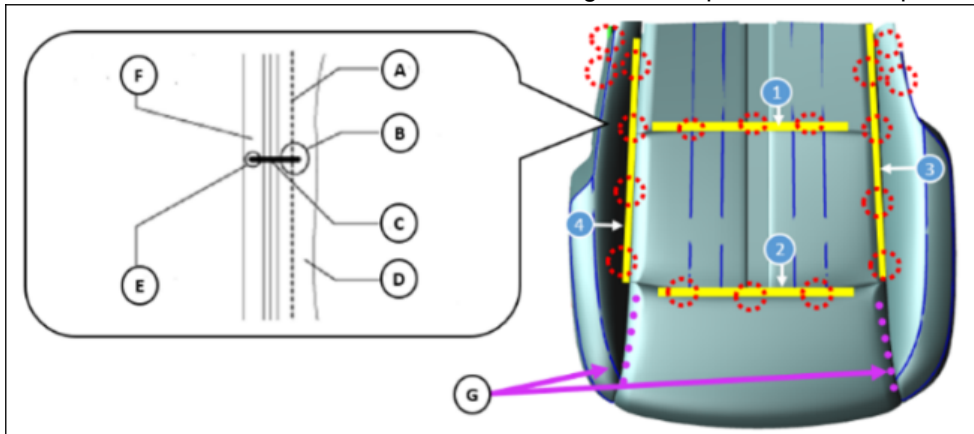
i. Install the new seat cushion trim in the reverse order of removal.

**ATTENTION:** Check the notes below before starting the installation.

**IMPORTANT NOTES FOR FRONT SEAT CUSHION TRIM INSTALLATION**

1) Adjust the front seat cushion trim to the cushion pad and clamp the C-rings in the order as shown in the picture (1 to 4).

**NOTE:** Press the trim's inner side against the pad's velcro straps to attach them well (marked as G).

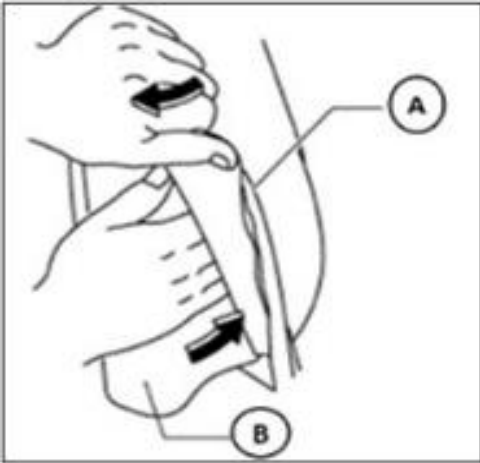


- A Wire
- B Hole for C-ring
- C C-ring
- D Front seat cushion pad
- E Hole for C-ring
- F Front seat cushion trim

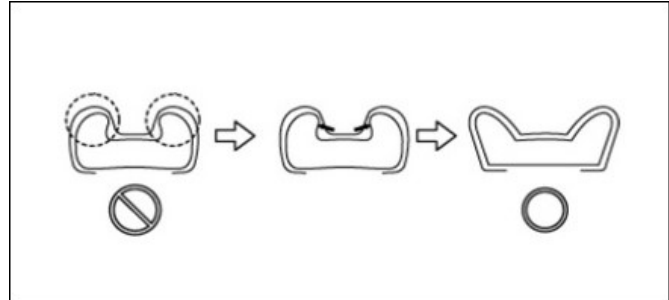
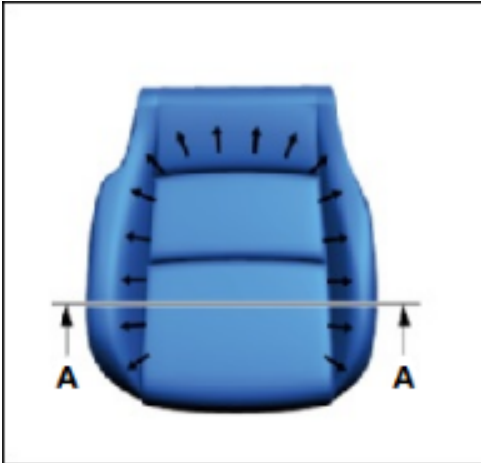
**CONSUMER NOTICE:** The information and instructions in this bulletin are intended for use by skilled technicians. Mazda technicians utilize the proper tools/ equipment and take training to correctly and safely maintain Mazda vehicles. These instructions should not be performed by "do-it-yourselfers." Customers should not assume this bulletin applies to their vehicle or that their vehicle will develop the described concern. To determine if the information applies, customers should contact their nearest authorized Mazda dealership. Mazda North American Operations reserves the right to alter the specifications and contents of this bulletin without obligation or advance notice. All rights reserved. No part of this bulletin may be reproduced in any form or by any means, electronic or mechanical--including photocopying and recording and the use of any kind of information storage and retrieval system ---without permission in writing.

**TIP:** Keeping the same amount of tightening for all C-rings helps to prevent wrinkles on the trim. A hog ring plier may be useful for this procedure.

2) Pull the front seat cushion trim (A) out while pushing the cushion pad (B) in.



3) Adjust the front cushion trim to the cushion pad's shape by pushing the trim outwards.



Sec. A-A

- If the front seat cushion trim still has wrinkles, remove them as indicated below.

Equipment:

- Domestic steam iron
- Mist spray bottle
- Clean cloth

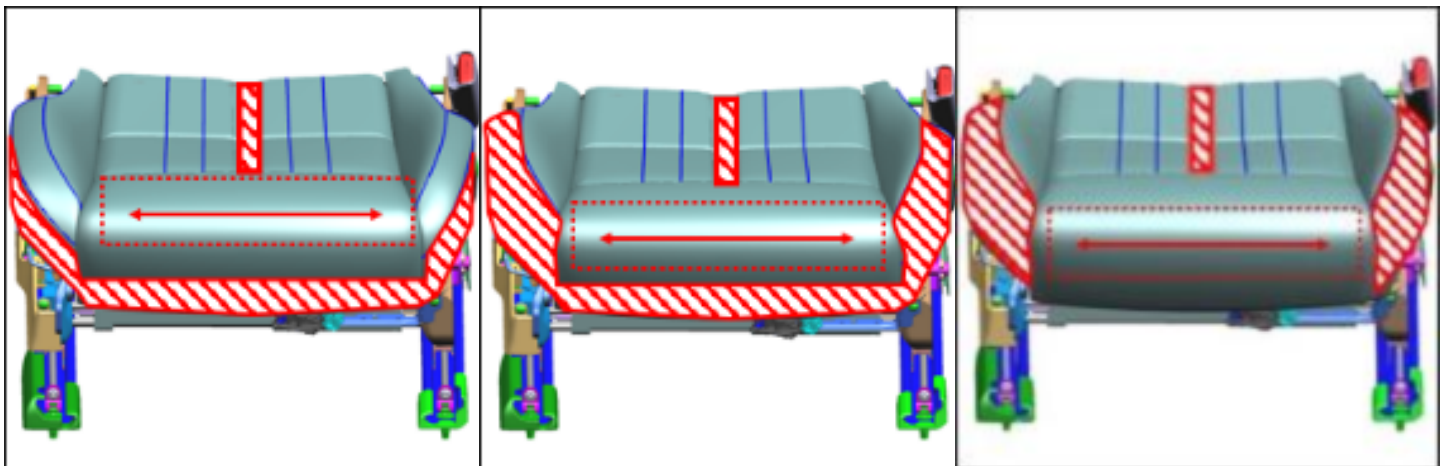
**CONSUMER NOTICE:** The information and instructions in this bulletin are intended for use by skilled technicians. Mazda technicians utilize the proper tools/ equipment and take training to correctly and safely maintain Mazda vehicles. These instructions should not be performed by "do-it-yourselfers." Customers should not assume this bulletin applies to their vehicle or that their vehicle will develop the described concern. To determine if the information applies, customers should contact their nearest authorized Mazda dealership. Mazda North American Operations reserves the right to alter the specifications and contents of this bulletin without obligation or advance notice. All rights reserved. No part of this bulletin may be reproduced in any form or by any means, electronic or mechanical---including photocopying and recording and the use of any kind of information storage and retrieval system ---without permission in writing.

Additional Information:

- The heatproof temperature for leather is around 212 degrees F (100 degrees C).
- Common domestic iron temperature setup:
  - High: around 446 degrees F (230 degrees C)
  - Medium: 320 degrees F (160 degrees C)
  - Low: 248 degrees F (120 degrees C)
- a. Heat the iron to 284 - 356 degrees F (140 – 180 degrees C).
- b. Stretch the wrinkled point of seat surface by hand.
- c. Spray water on the cloth with the spray bottle.
- d. Wrap the bottom of the iron with the water-soaked cloth.
- e. Run the iron with the cloth on the cushion trim's front side wrinkled area.

**NOTE:**

- Always keep the cloth wet. Spray water on the cloth repeatedly before the cloth dries.
- DO NOT iron the seat bolster sides and the central belt-shaped design fraction as these parts are very sensitive to heat.
- The parts vulnerable to heat depend on the seat type.



White

Black and Greige

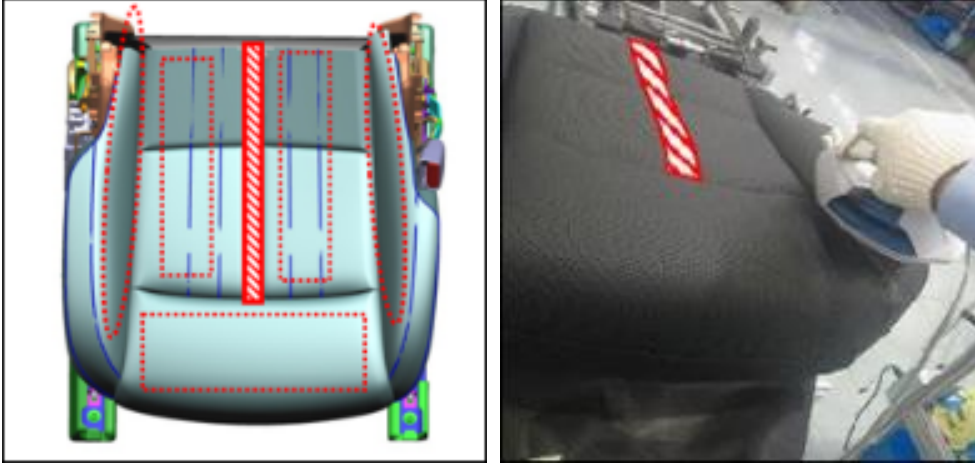
Tan



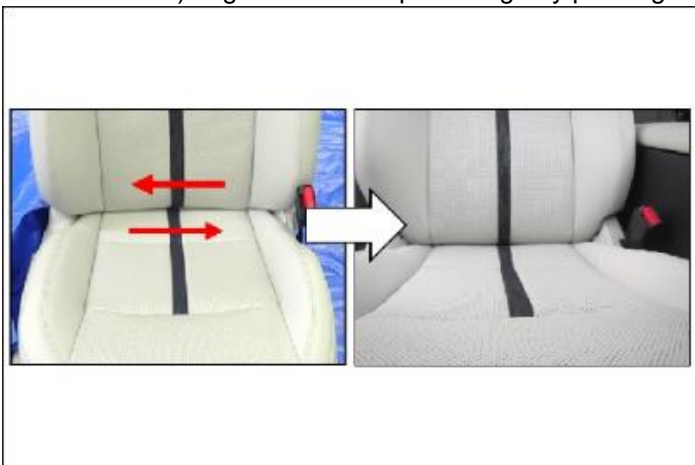
Low resistance to heat

- 4) Using the cloth and the iron, remove the remaining wrinkles from the whole seat cushion trim, omitting the parts vulnerable to heat.

**CONSUMER NOTICE:** The information and instructions in this bulletin are intended for use by skilled technicians. Mazda technicians utilize the proper tools/ equipment and take training to correctly and safely maintain Mazda vehicles. These instructions should not be performed by "do-it-yourselfers." Customers should not assume this bulletin applies to their vehicle or that their vehicle will develop the described concern. To determine if the information applies, customers should contact their nearest authorized Mazda dealership. Mazda North American Operations reserves the right to alter the specifications and contents of this bulletin without obligation or advance notice. All rights reserved. No part of this bulletin may be reproduced in any form or by any means, electronic or mechanical--including photocopying and recording and the use of any kind of information storage and retrieval system ---without permission in writing.



5) Align the belt-shaped design by pushing the seat back and the cushion trims.



6) After adjusting the trims' position, remove the wrinkles using the iron and the cloth.

3. Verify the repair.

4. Install the front seat side cover (FRONT SEAT SIDE COVER REMOVAL/INSTALLATION).

5 Install the front seat (DRIVER-SIDE FRONT SEAT REMOVAL/INSTALLATION) or (PASSENGER-SIDE FRONT SEAT REMOVAL/INSTALLATION).

**CONSUMER NOTICE:** The information and instructions in this bulletin are intended for use by skilled technicians. Mazda technicians utilize the proper tools/ equipment and take training to correctly and safely maintain Mazda vehicles. These instructions should not be performed by "do-it-yourselfers." Customers should not assume this bulletin applies to their vehicle or that their vehicle will develop the described concern. To determine if the information applies, customers should contact their nearest authorized Mazda dealership. Mazda North American Operations reserves the right to alter the specifications and contents of this bulletin without obligation or advance notice. All rights reserved. No part of this bulletin may be reproduced in any form or by any means, electronic or mechanical---including photocopying and recording and the use of any kind of information storage and retrieval system ---without permission in writing.



**PARTS INFORMATION**

Parts Number (Seat cushion trim)	Original Assembly Number	Description	Qty.	Notes
K629-88-111 02	KCNJ-57-100	TRIM(R), SEAT	1	BLACK, passenger seat
K629-88-161 02	KCNJ-57-150	TRIM(L), SEAT	1	BLACK, driver seat
K63H-88-111 27	KCNL-57-100	TRIM(R), SEAT	1	GREIGE, passenger seat
K63H-88-161 27	KCNL-57-150	TRIM(L), SEAT	1	GREIGE, driver seat
K63J-88-111 02	KCNN-57-100	TRIM(R), SEAT	1	BLACK, passenger seat
K63J-88-161 02	KCNN-57-150	TRIM(L), SEAT	1	BLACK, driver seat
K63K-88-111 39	KCNR-57-100	TRIM(R), SEAT	1	PURE WHITE, passenger seat
K63K-88-161 39	KCNR-57-150	TRIM(L), SEAT	1	PURE WHITE, driver seat
K63L-88-111 23	KCNT-57-100	TRIM(R), SEAT	1	TAN, passenger seat
K63L-88-161 23	KCNT-57-150	TRIM(L), SEAT	1	TAN, driver seat
KEWM-88-111 02	KEWM-57100	TRIM(R), SEAT	1	BLACK, passenger seat
KEWM-88-161 02	KEWM-57150	TRIM(L), SEAT	1	BLACK, driver seat
KEWN-88-111 02	KEWN-57100	TRIM(R), SEAT	1	BLACK, passenger seat
KEWN-88-161 02	KEWN-57150	TRIM(L), SEAT	1	BLACK, driver seat
KEWR-88-111 39	KEWR-57100	TRIM(R), SEAT	1	PURE WHITE, passenger seat
KEWR-88-161 39	KEWR-57150	TRIM(L), SEAT	1	PURE WHITE, driver seat
KEWS-88-111 39	KEWS-57100	TRIM(R), SEAT	1	PURE WHITE, passenger seat
KEWS-88-161 39	KEWS-57150	TRIM(L), SEAT	1	PURE WHITE, driver seat
KEWV-88-111 23	KEWV-57100	TRIM(R), SEAT	1	TAN, passenger seat
KEWV-88-161 23	KEWV-57150	TRIM(L), SEAT	1	TAN, driver seat
KFAA-88-111 39	KFAA-57100	TRIM(R), SEAT	1	PURE WHITE, passenger seat
KFAA-88-161 39	KFAA-57150	TRIM(L), SEAT	1	PURE WHITE, driver seat
KPE7-88-111 39	KFAB-57100	TRIM(R), SEAT	1	PURE WHITE, passenger seat
KPE7-88-161 39	KFAB-57150	TRIM(L), SEAT	1	PURE WHITE, driver seat

**CONSUMER NOTICE:** The information and instructions in this bulletin are intended for use by skilled technicians. Mazda technicians utilize the proper tools/ equipment and take training to correctly and safely maintain Mazda vehicles. These instructions should not be performed by "do-it-yourselfers." Customers should not assume this bulletin applies to their vehicle or that their vehicle will develop the described concern. To determine if the information applies, customers should contact their nearest authorized Mazda dealership. Mazda North American Operations reserves the right to alter the specifications and contents of this bulletin without obligation or advance notice. All rights reserved. No part of this bulletin may be reproduced in any form or by any means, electronic or mechanical--including photocopying and recording and the use of any kind of information storage and retrieval system ---without permission in writing.

**WARRANTY INFORMATION****NOTE:**

- This warranty information applies only to verified customer complaints on vehicles eligible for warranty repair.
- This repair will be covered under Mazda's New Vehicle Limited Warranty term.
- Additional diagnostic time cannot be claimed for this repair.

Warranty Type	A
Symptom Code	89
Damage Code	9B
Part Number Main Cause	****-88-111 or ****-88-161
Quantity	1
Operation Number / Labor Hours:	XXWDNARX / 1.2 Hr. (One side) XXWDNBRX / 2.1 Hr. (Both sides w/ power seat system) XXWDNCRX / 2.0 Hr. (Both sides w/out power seat system)

**CONSUMER NOTICE:** The information and instructions in this bulletin are intended for use by skilled technicians. Mazda technicians utilize the proper tools/ equipment and take training to correctly and safely maintain Mazda vehicles. These instructions should not be performed by "do-it-yourselfers." Customers should not assume this bulletin applies to their vehicle or that their vehicle will develop the described concern. To determine if the information applies, customers should contact their nearest authorized Mazda dealership. Mazda North American Operations reserves the right to alter the specifications and contents of this bulletin without obligation or advance notice. All rights reserved. No part of this bulletin may be reproduced in any form or by any means, electronic or mechanical---including photocopying and recording and the use of any kind of information storage and retrieval system ---without permission in writing.