

- ATTENTION:**
- GENERAL MANAGER
 - PARTS MANAGER
 - CLAIMS PERSONNEL
 - SERVICE MANAGER

IMPORTANT - All Service Personnel Should Read and Initial in the boxes provided, right.

© 2023 Subaru of America, Inc. All rights reserved.



QUALITY DRIVEN® SERVICE

SERVICE INFORMATION BULLETIN

APPLICABILITY: 2020-23MY Legacy & Outback
 2017-23 Impreza with Variable Capacity Compressor
 2018-23 Crosstrek with Variable Capacity Compressor
 2019-22 Ascent

NUMBER: 18-232-23
DATE: 11/15/23

SUBJECT: Service Manual Correction for A/C Compressor Break-In Procedure

INTRODUCTION:

This Service Information Bulletin announces the revised break-in procedure for the A/C compressor. This revision will be added to the Service Manual in the future. When replacing the compressor with a new part, follow the procedures outlined below.

SERVICE PROCEDURE / INFORMATION:

REMINDER: Customer satisfaction and retention starts with performing quality repairs.

The service procedures for A/C compressor replacement remain unchanged. Always refer to the applicable Service Manual and review the full requirements of the repair being performed. The Service Manual procedures contain information critical to performing an effective repair the first time, every time. This includes but is not limited to important SAFETY precautions, proper inspection criteria, necessary special tools, required processes, and related one-time-use parts needed for a complete and lasting repair.

Refer to STIS: Heater & Airconditioner/Ventilator > AIR CONDITIONER > Compressor

CAUTION: VEHICLE SERVICING PERFORMED BY UNTRAINED PERSONS COULD RESULT IN SERIOUS INJURY TO THOSE PERSONS OR TO OTHERS.

Subaru Service Bulletins are intended for use by professional technicians ONLY. They are written to inform those technicians of conditions that may occur in some vehicles, or to provide information that could assist in the proper servicing of the vehicle. Properly trained technicians have the equipment, tools, safety instructions, and know-how to do the job correctly and safely. If a condition is described, DO NOT assume that this Service Bulletin applies to your vehicle, or that your vehicle will have that condition.

Subaru of America, Inc. is ISO 14001 Compliant

ISO 14001 is the international standard for excellence in Environmental Management Systems. Please recycle or dispose of automotive products in a manner that is friendly to our environment and in accordance with all local, state and federal laws and regulations.

Continued...

COMPRESSOR OIL INFORMATION REMINDER:

Prior to performing any service procedures, complete the oil return operation to return the circulated oil to the compressor.

Run the engine and increase the idle to approximately 1,500 rpms.

Confirm the A/C switch is ON.

Set the temperature control to low (MAX COOL.)

Set the fresh/recirculation switch to the recirculation position.

Set the blower speed to HI (MAXIMUM.)

Maintain this condition for ten minutes/

IMPORTANT: If a component requires replacement, measure the amount of oil removed from the component. Add the same amount of new oil to the component being replaced. If the compressor requires replacement, the new compressor will have the specified amount of oil installed. ALWAYS adjust the oil amount to match the same amount of oil removed from the original compressor before installation.

BREAK-IN PROCEDURE:

IMPORTANT: The revised portions of the procedure have been outlined below in **RED**.

If replacing the compressor assembly with a new part, perform a break-in operation according to the following steps.

STEP 1: New compressor is properly installed, refrigerant oil is added, and AC system is charged to specification.

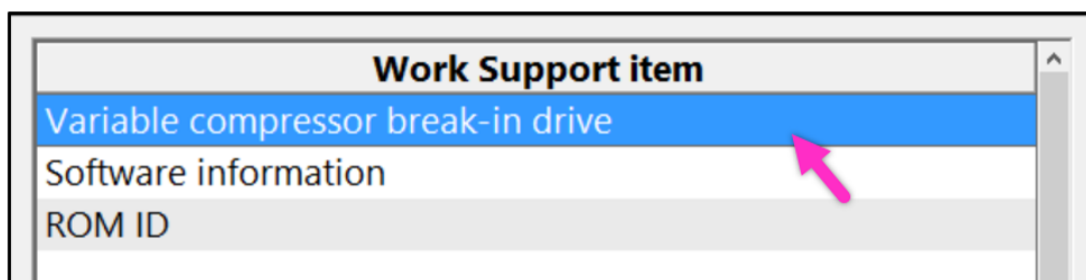
STEP 2: Confirm all electrical connectors are locked securely.

STEP 3: Reset the air conditioner control module. (Disconnect and then re-connect the electrical connector)

STEP 4: Install the delivery mode fuse. Refer to STIS: [General Description > PRE-DELIVERY INSPECTION \(PDI\) PROCEDURE](#)

STEP 5: Start and idle the engine at or below 1,800 r/min. **DO NOT** turn off the engine until **STEP 8**.

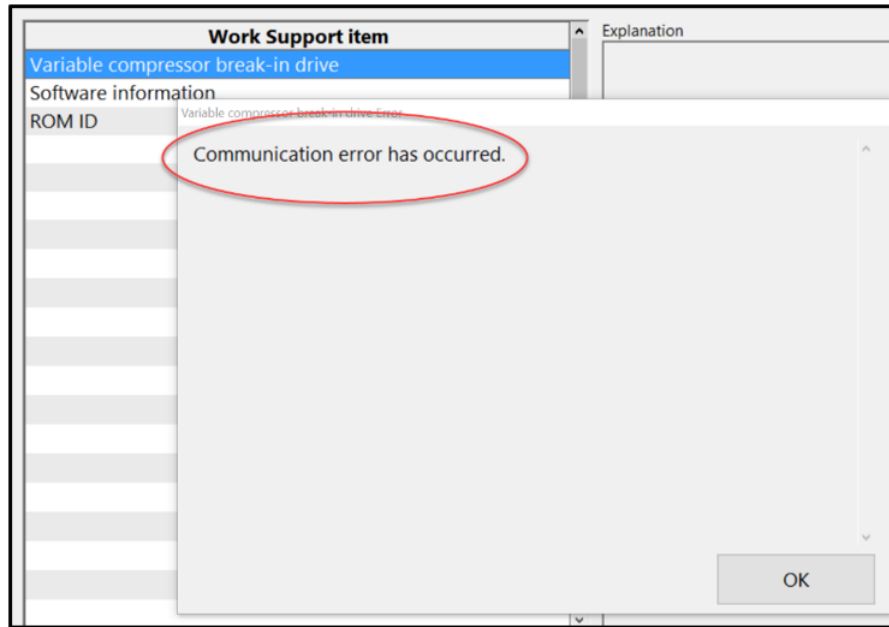
STEP 6: Using Subaru Select Monitor (SSM), perform the “Variable Compressor Break-In” procedure located within the “Work Support” menu in the “Air Conditioner” section. [Refer to STIS: DIAGNOSTICS > COMMON \(DIAGNOSTICS\)](#)



Continued...

NOTES:

- If the [Variable Compressor Break-In Drive] is selected on the Work Support screen before the engine is started, a possible communication error may be displayed when starting the engine. If this occurs, return to STEP 5.



- **DO NOT** increase the engine speed to and above 4,000 r/min unless the break-in operation is complete.
- If the engine has been started without any refrigerant charge, check for any diagnostic trouble codes (DTC) using Subaru Select Monitor. If DTC B14A8 (REFRIGERANT NOT SEALED DRIVE ERROR) is detected, replace the compressor assembly.

STEP 7: Monitor the break-in procedure status displayed on SSM.

STEP 8: When the break-in procedure changes from “Incomplete” to “ON,” turn off the engine.

STEP 9: Remove the delivery mode fuse.

STEP 10: The break-in procedure is complete.

WARRANTY / CLAIM INFORMATION:

There have been no changes made to the Warranty Labor Time Guide for this procedure.

IMPORTANT REMINDERS:

- SOA strongly discourages the printing and/or local storage of service information as previously released information and electronic publications may be updated at any time.
- Always check for any open recalls or campaigns anytime a vehicle is in for servicing.
- Always refer to STIS for the latest service information before performing any repairs.