



INSTRUCTION TO SERVICE

ITS: 60838		DATE 10/27/2023
SECTION:	260U – Battery Compartment	
WRITTEN BY:	Daniel Tice	
SUBJECT:	Fuse Box Mounting Hardware Replacement.	
ISSUE:	Potential for Loose Fuse Box Mounting Hardware.	
SUMMARY:	Replace and Torque Fuse Box mounting Hardware.	

ITS60838

Ref. NHTSA Recall No.	Ref. Transport Canada Recall No.
Not Applicable	Not Applicable

THIS ITS DOCUMENT SHOULD BE RETAINED AND REFERRED TO FOR FUTURE MAINTENANCE UNTIL THE NEW FLYER PARTS AND/OR SERVICE MANUAL IS UPDATED TO REFLECT WORK DONE AS A RESULT OF THIS DOCUMENT. ENSURE THAT THIS DOCUMENT IS AVAILABLE FOR PARTS AND MAINTENANCE STAFF GOING FORWARD.



NEW FLYER

PROCEDURE:

1. Turn the main battery disconnect switch to the "OFF" position.
2. Disconnect battery cables providing power to the fuse box.
3. Gain access to fuse box located on the curb side rear of the bus. See Figure 1.

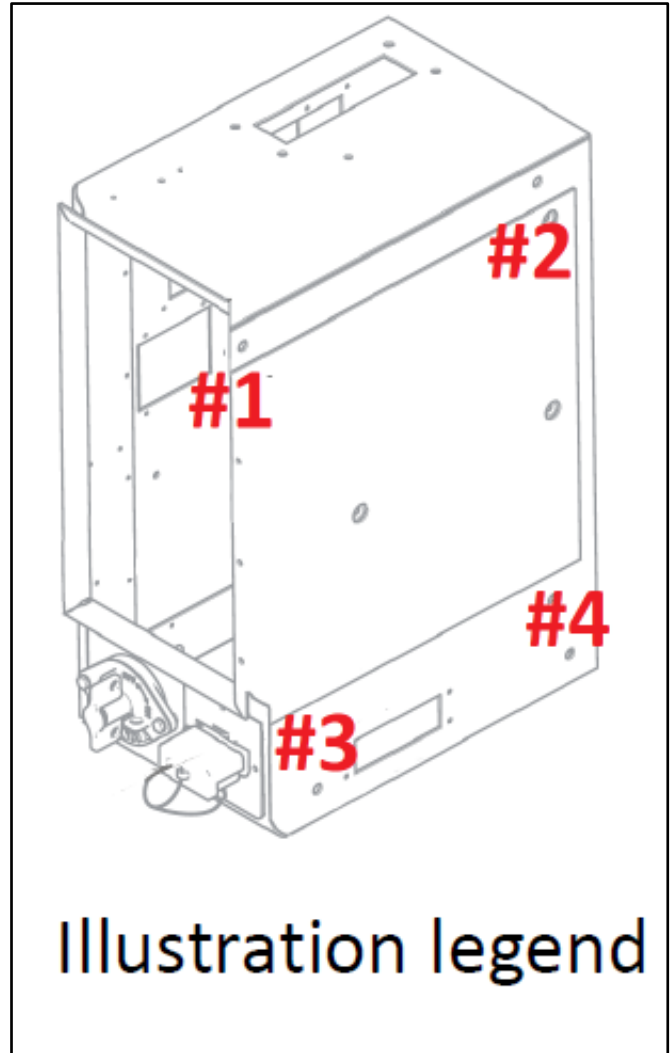
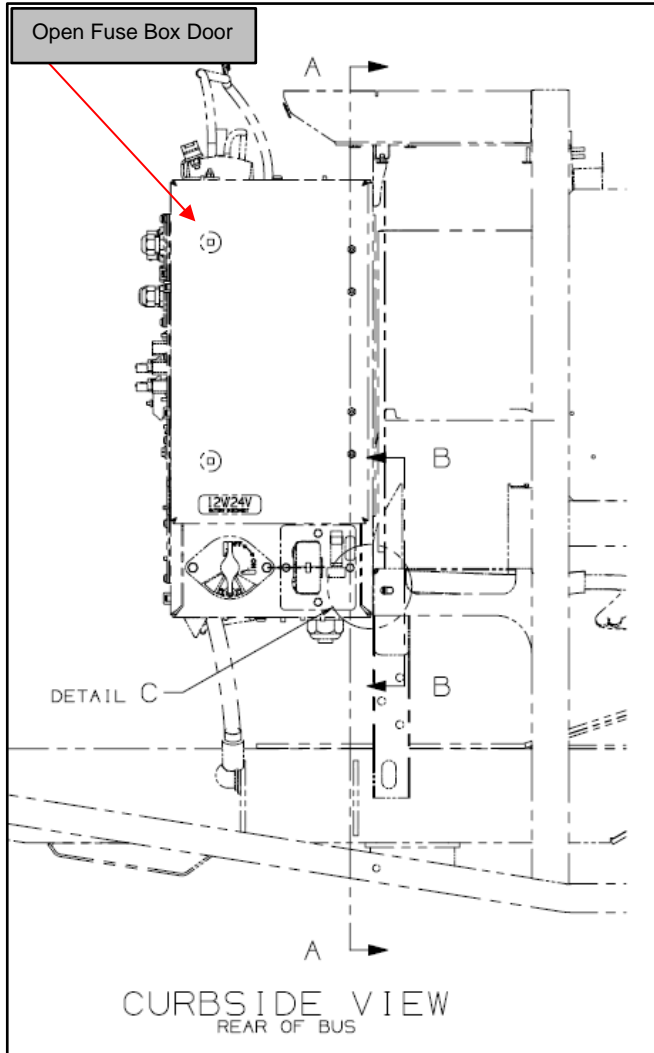


Figure 1: Curb side fuse box location reference.

4. Based on the fuse box assembly configuration to gain access to the mounting hardware removal of the circuit breaker bracket assembly may be required. As required remove the circuit breaker bracket assembly mounting hardware and set aside for re-installation. See Figure 2.
5. Move the circuit breaker bracket assembly out of the way to gain access to the fuse box upper mounting hardware in locations #1 and #2 and remove and discard the hardware. See Figure 2.

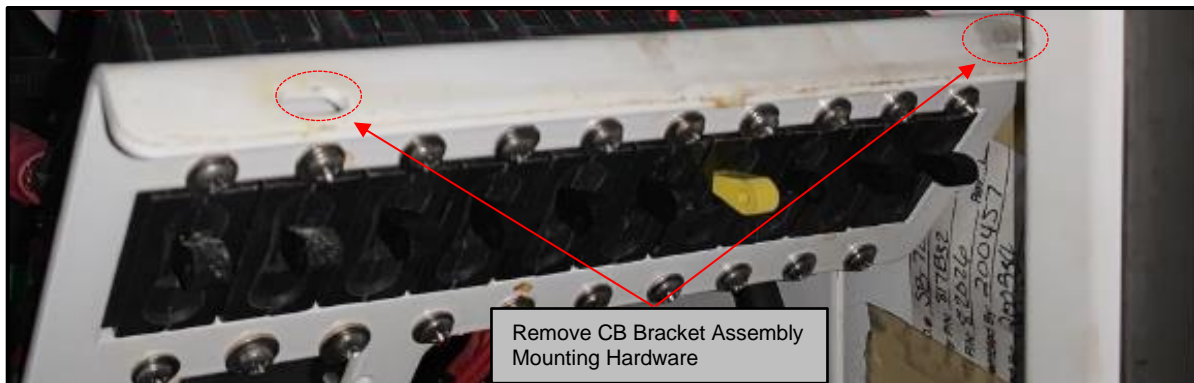
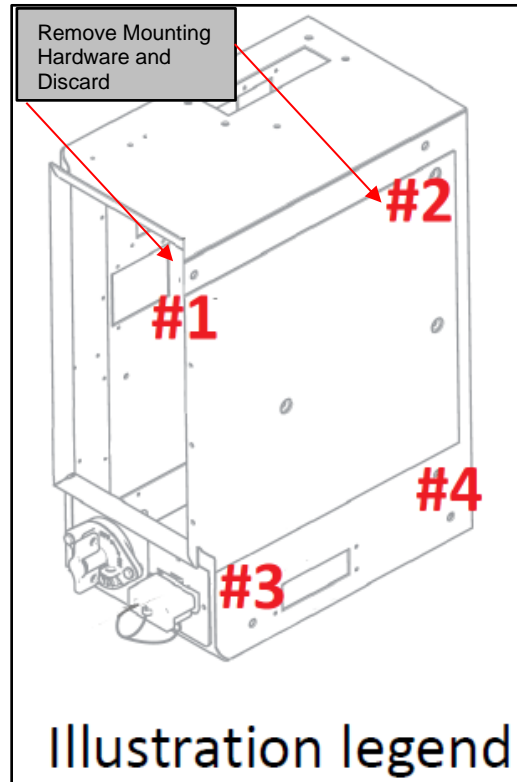
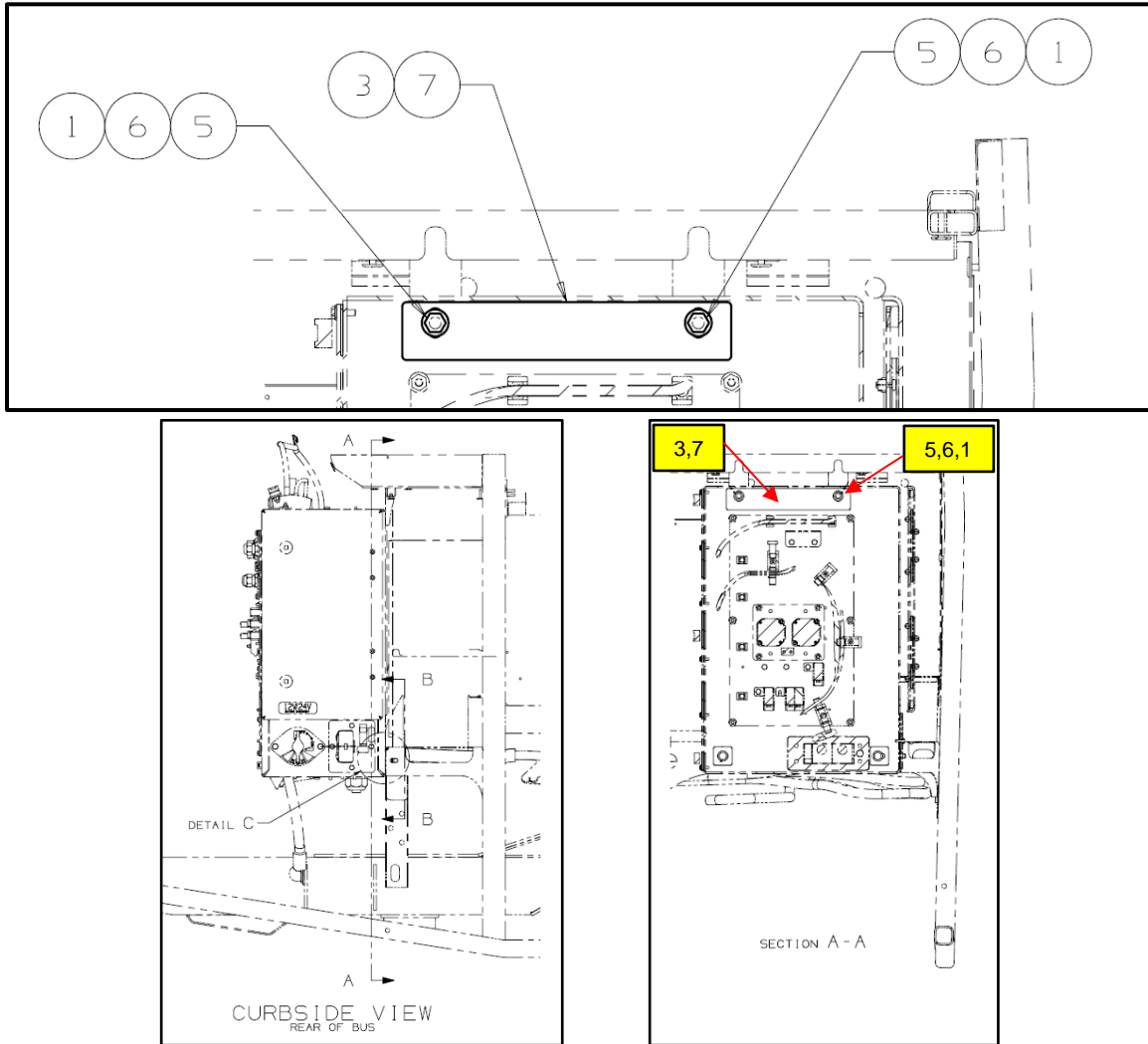


Figure 2: Fuse box circuit breaker bracket assembly location reference.

- Locate item #7 upper fuse box bracket and apply item #3 Sika sealer around the upper studs and fuse box plate mounting holes to seal them. Secure in place with items #6 Washers and item #5 Nuts applying one or two drops of item #1 Loctite. Do not fully tighten. See Figure 3.

Note: Leave fuse box upper mounting loose until remaining hardware location are in place.



Item	Part Number	Description
1	081034	LOCTITE-243 MEDIUM 10ML
3	242702	ADHESIVE-SIKA 221 WHITE
5	50N06000	NUT SST 3/8 UNC
6	50W06000	WASHER FLAT SS 3/8 NOM
7	985180	PLATE-FUSEBOX MOUNTING UPPER

Figure 3: Upper fuse box mounting plate #1 & #2 location reference.

7. Remove the hardware in positions **#3** and **#4** and discard. See Figure 4.

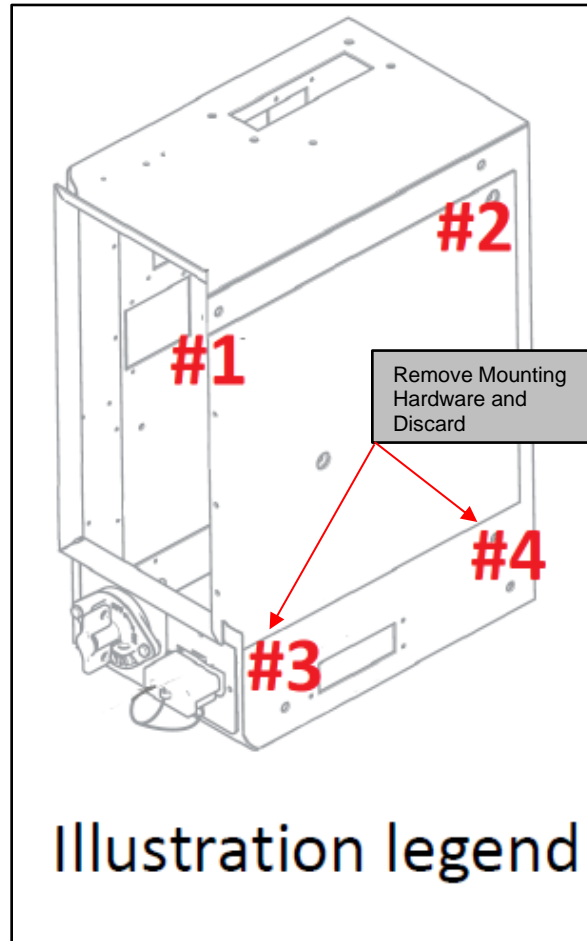


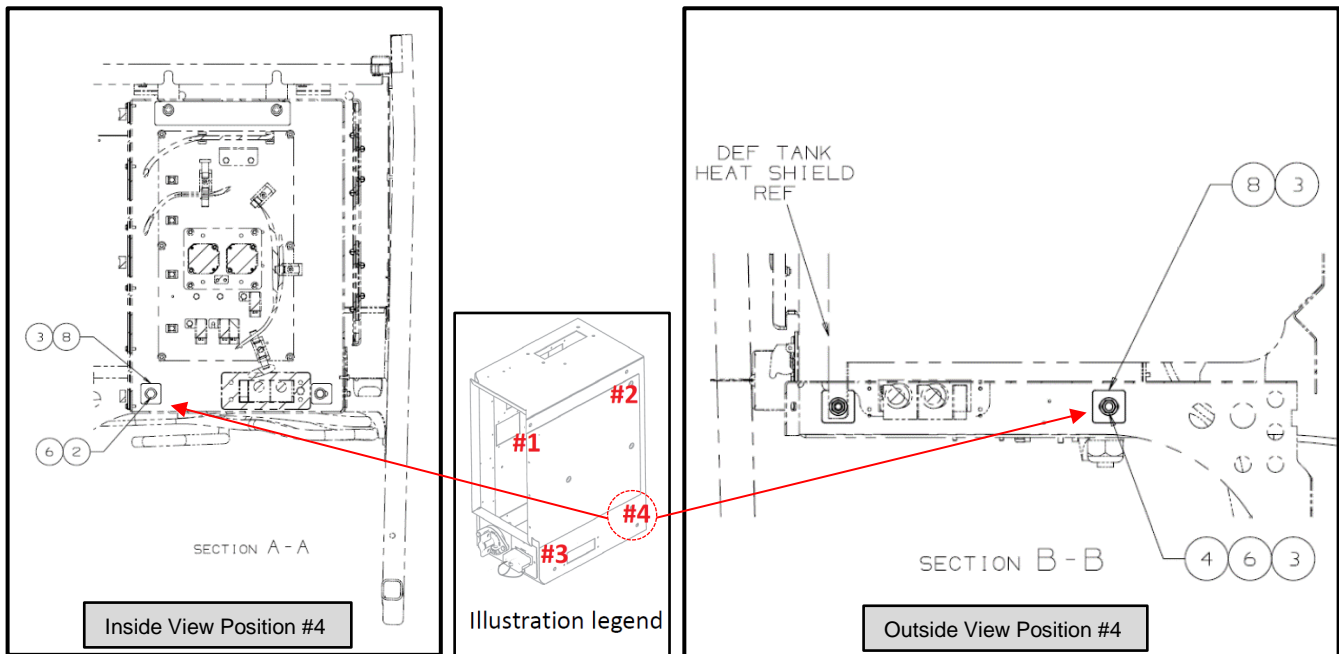
Figure 4: Lower fuse box mounting hardware location reference.

Note: Mounting hardware is different in both lower mounting locations #3 and #4.

8. Locate new bolt item #2 and qty two of item #6 washers and item #8 lower fuse box mounting plates.
9. Apply item #3 Sika sealer around each plate to be installed on the inside and outside of the box in #4 rear mounting hole location as needed to seal the hole. See Figure 5.
10. Install #2 bolt, #6 washer and #8 plate on the inside and secure with #8 plate, #6 washer and item #4 nut on the outside. See Figure 5.

Note: Item #8 plates may be rotated for best fitment.

Note: Leave loose until remaining hardware location are in place.



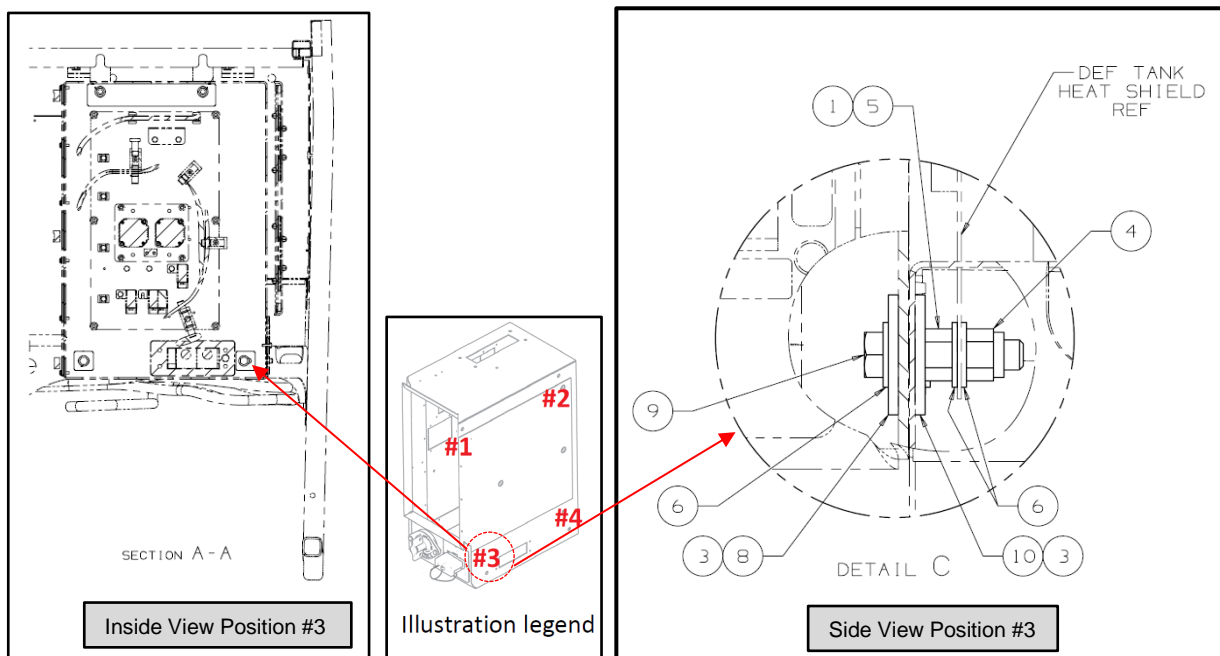
Item	Part Number	Description
2	20B06024	BOLT SST 3/8 UNC x 1.5 LG
3	242702	ADHESIVE-SIKA 221 WHITE
4	42N06000	NUT-3/8-16 UNC NYLON LOCK SST
6	50W06000	WASHER FLAT SS 3/8 NOM
8	985831	PLATE-FUSEBOX MOUNTING LOWER

Figure 5: Lower rear fuse box mounting plate #4 location reference.

11. Locate item #9 fully threaded bolt, three of item #6 washers, one of #8 lower fuse box mounting plates and one of item #10 outer fuse box mounting plate.
12. Apply item #3 Sika sealer around plate item #8 to be installed on the inside and #10 for the outside of the box in #3 mounting hole location as needed to seal the hole. See Figure 6.
13. Install #9 bolt, #6 washer and #8 plate on the inside place item #10 outer fuse box mounting plate on the outside and secure with #5 nut on the outside applying one or two drops of item #1 Loctite. Torque to 22 FT-LBS. See Figure 6.

Note: Item #8 plates may be rotated for best fitment.

14. Install item #6 washer on top of item #5 nut after torquing. Place the DEF tank shield over the bolt and install another item #6 washer and item #4 nut on the bolt. Hold #9 bolt on the inside of the fuse box and torque #4 nut to 22 FT-LBS. See Figure 6.
15. Once complete go back and torque positions #1, #2 and #3 to 22 FT-LBS.



Item	Part Number	Description
1	081034	LOCTITE-243 MEDIUM 10ML
3	242702	ADHESIVE-SIKA 221 WHITE
4	42N06000	NUT-3/8-16 UNC NYLON LOCK SST
5	50N06000	NUT SST 3/8 UNC
6	50W06000	WASHER FLAT SS 3/8 NOM
8	985831	PLATE-FUSEBOX MOUNTING LOWER
9	1001266	BOLT SST 3/8-16 1.75 FULL THREAD
10	1001231	PLATE FUSE BOX MOUNTING OUTER

Figure 6: Lower front fuse box mounting plate #3 location reference.

16. Re-install the circuit breaker bracket assembly using the existing hardware. Apply one or two drops of item #1 Loctite where locking nuts are not used. Figure 7.
17. Re-install battery terminals to the batteries torquing hardware to 15 FT-LBS and apply torque marks.
18. Remove all tools and debris and close and secure the fuse box door.
19. Turn the main battery disconnect switch to the “ON” position and return to service.



Item	Part Number	Description
1	081034	LOCTITE-243 MEDIUM 10ML

Figure 7: Fuse box circuit breaker bracket assembly location reference.



LABOUR ESTIMATE				
	Operation	Number of Technician(s)	Hours	Labor Time T X HR
1	Replace fuse box mounting hardware and add mounting plates.	1	1.5	1.5

PARTS REQUIRED					
Item	Part Number	Description	Qty. per Coach	Units	Notes
1	081034	LOCTITE-243 MEDIUM 10ML	0.010	EA	
2	20B06024	BOLT SST 3/8 UNC x 1.5 LG	1	EA	
3	242702	ADHESIVE-SIKA 221 WHITE	0.010	EA	
4	42N06000	NUT-3/8-16 UNC NYLON LOCK SST	2	EA	
5	50N06000	NUT SST 3/8 UNC	3	EA	
6	50W06000	WASHER FLAT SS 3/8 NOM	7	EA	
7	985180	PLATE-FUSEBOX MOUNTING UPPER	1	EA	
8	985831	PLATE-FUSEBOX MOUNTING LOWER	3	EA	
9	1001266	BOLT SST 3/8-16 1.75 FULL THREAD	1	EA	
10	1001231	PLATE FUSE BOX MOUNTING OUTER	1	EA	

SPECIAL TOOLS REQUIRED					
Item	Part Number	Description	Qty.	Units	Notes