



INSTRUCTION TO SERVICE

ITS: 60853		DATE 10/30/23
SECTION:	260U – Battery Compartment	
WRITTEN BY:	Ilan Kizner	
SUBJECT:	Rework ground cable for DC LINK DIST BOX	
ISSUE:	Ground cable does not have enough clearance from box components	
SUMMARY:	Revise cable routing and adding an additional bracket	

ITS60853

Ref. NHTSA Recall No.	Ref. Transport Canada Recall No.
Not Applicable	Not Applicable

THIS ITS DOCUMENT SHOULD BE RETAINED AND REFERRED TO FOR FUTURE MAINTENANCE UNTIL THE NEW FLYER PARTS AND/OR SERVICE MANUAL IS UPDATED TO REFLECT WORK DONE AS A RESULT OF THIS DOCUMENT. ENSURE THAT THIS DOCUMENT IS AVAILABLE FOR PARTS AND MAINTENANCE STAFF GOING FORWARD.



Contents

1. SAFETY PROCEDURE.....	3
2. PROCEDURE:.....	4

⚠ WARNING: Only trained personnel shall supervise and perform High Voltage system testing, checkout and troubleshooting. Two personnel (one called the Checker & the other called Monitor/Recorder) shall perform Checkout Procedures, together, to ensure safety of themselves, others nearby & for the protection of vehicle & property. Refresher training shall be provided to these personnel on a regular basis and when new systems are to be checked by them. The training of the personnel shall consist of:

1. SAFETY PROCEDURE

- 1.1. Turn the master run switch to the off position and wait 5 minutes before proceeding.
- 1.2. Turn the 12/24V battery disconnect and HV Interlock switch to the "OFF" position.
- 1.3. Lock and Tag the electrical system of the bus out and retain the key. See Figure 1.
- 1.4. Install a Lockout/Tagout Steering wheel cover as require.

- ☞ **NOTE:** Refer to the Lockout/Tagout Procedure in section 1 of your Preventive Maintenance Manual or section 9 of your Service manual for additional information.
- ☞ **NOTE:** Use commercially available lock out equipment and tags being sure to follow any local laws or workplace procedures.
- ☞ **NOTE:** Refer to New Flyer High Voltage Safety Guidelines and Procedures Document 532295 (Appendix A) when completing installation or service work on high voltage power cables.

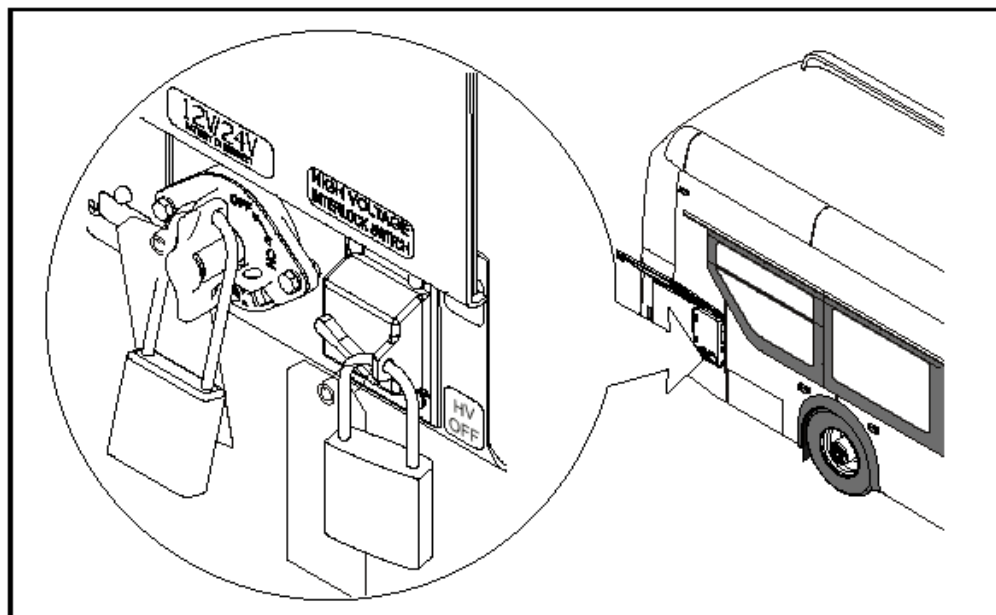
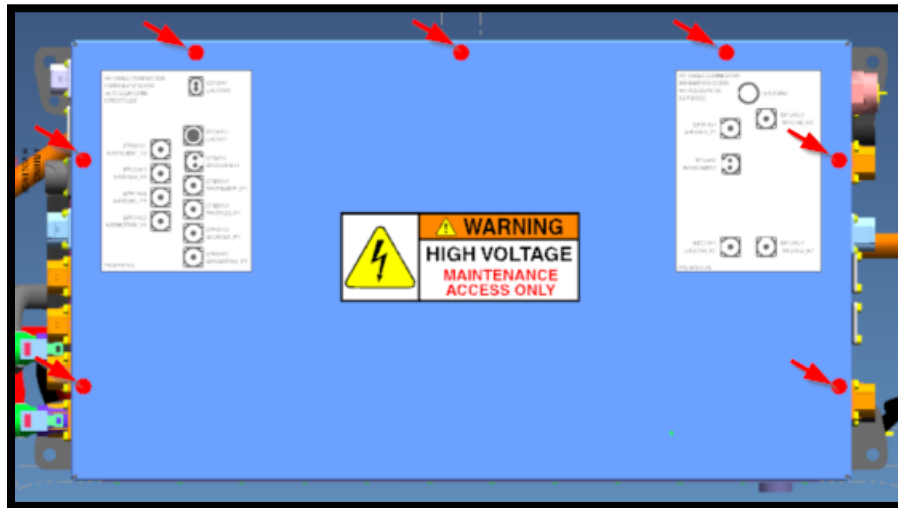


Figure 1: Lockout tagout location reference

2. PROCEDURE:

- 2.1. Locate the DC link distribution box at the rear engine compartment.
- 2.2. Open the distribution box cover by removing 7 allen screw 835908



- 2.3. Remove the nut/nuts P/N 75NM05000 fastened to the ground studs of the fuse box as shown in Figure 1

Note: some box configurations might have 1 or 2 nuts

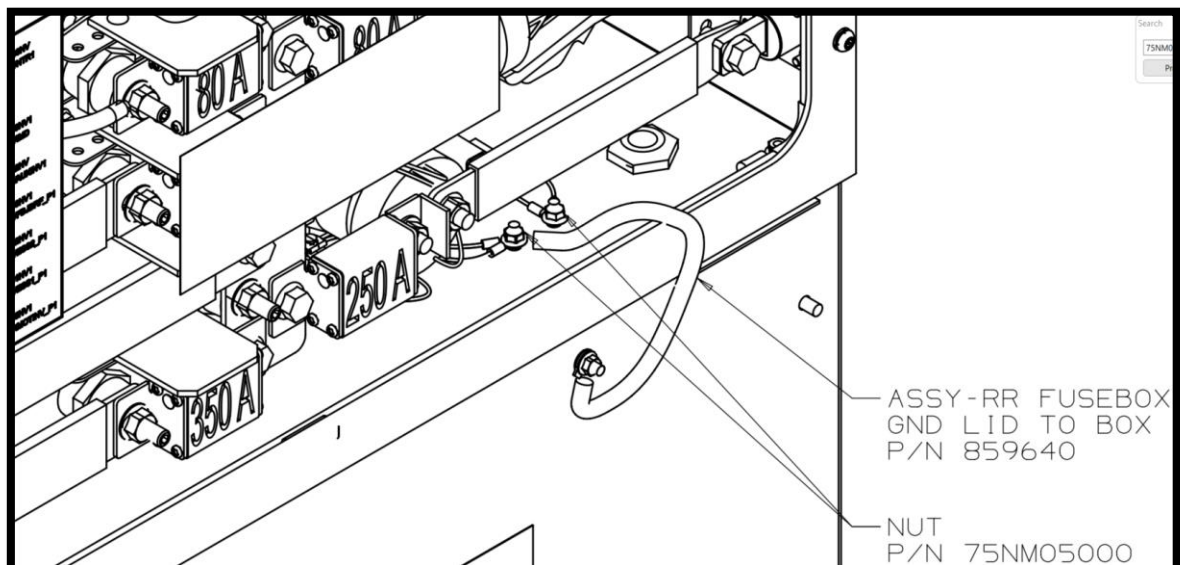


Figure 1 - Fuse box ground studs

- 2.4. Remove one end of ASSY-RR FUSEBOX GND P/N 859640 and other ground wires connected to the ground studs.

2.5. Install ASSY-WELD FUSEBOX GND P/N 1048317 and ground wires to the ground studs of the fuse box using the nuts that were removed in step 2.4, as shown in Figure 2. install a new nut P/N 75NM05000 if only one nut was removed in step 2.

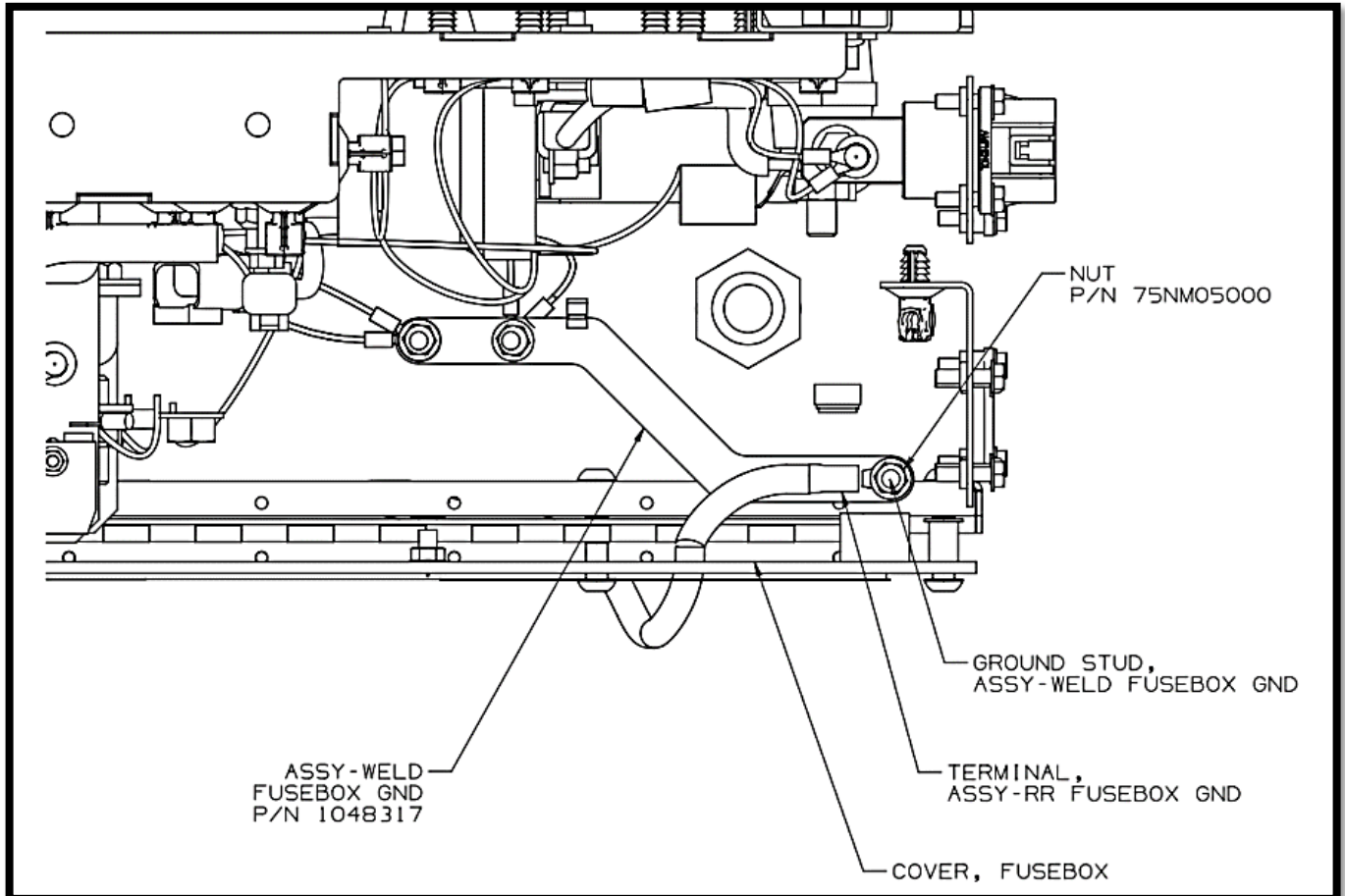


Figure 2 - New ground bracket

2.6. use nut P/N 75NM05000 to fasten the loose end of ASSY-RR FUSEBOX GND wire P/N 859640 to the ground stud of ASSY-WELD FUSEBOX GND P/N 1048317. Orient the terminal end of the wire so that it is parallel to the cover of the fuse box as shown in Figure 2.

2.7. Torque the three nuts P/N 75NM05000 to 3.7 n-m (32 in-lbs).

- 2.8. Loosen the nut P/N 75NM05000 on the cover end of ASSY-RR FUSEBOX GND. Re-orient the terminal of the ground wire so that it is at 45 deg with the horizontal/bottom of the box as shown in figure 3. Tighten and torque nut P/N 75NM05000 to 3.7 n-m (32 in-lbs).

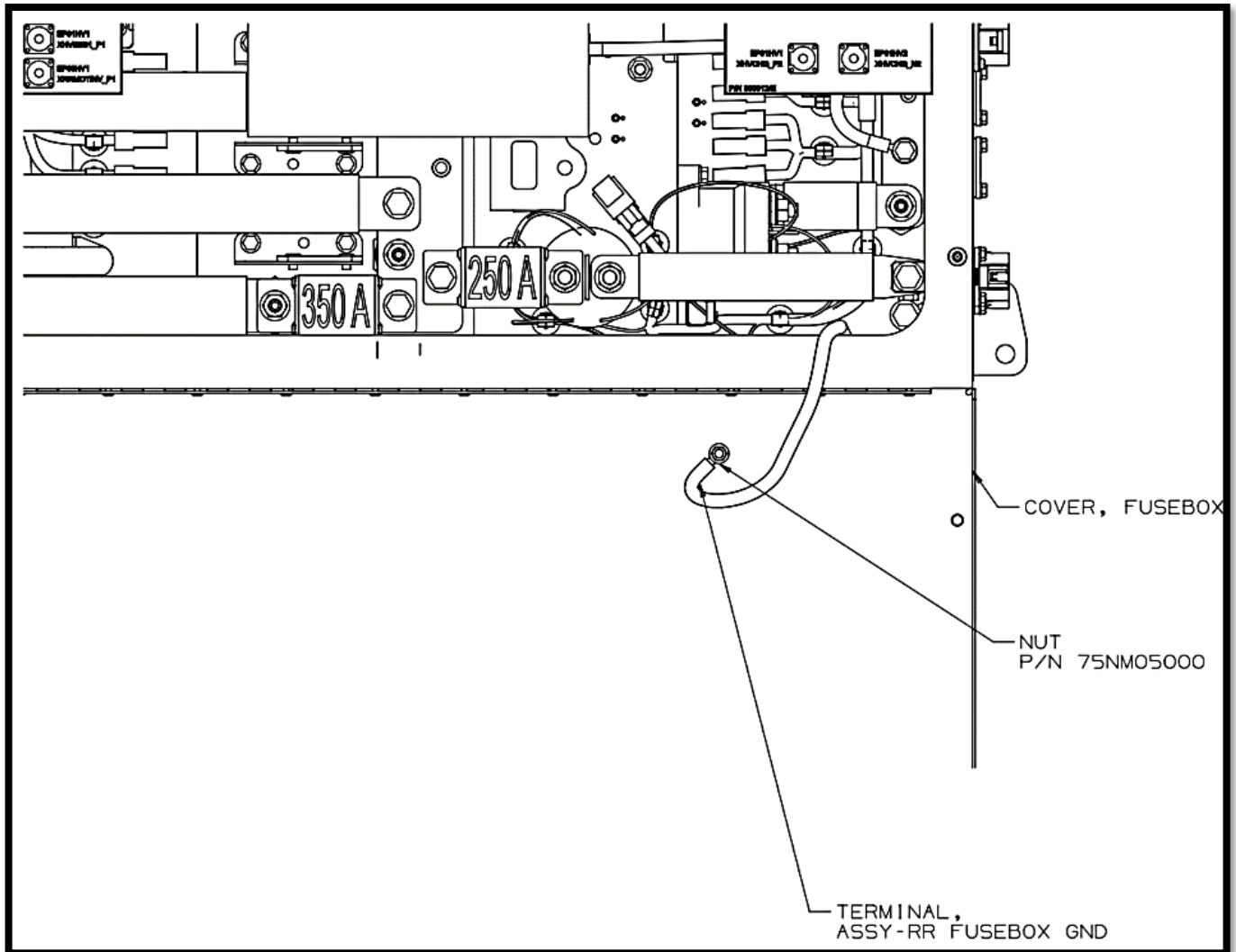


Figure 3 - Ground connection to box cover



LABOUR ESTIMATE				
	Operation	Number of Technician(s)	Hours	Labor Time T X HR
1	REWORK-ENG DC LINK DIST BOX ELFA3	1	2	2

PARTS REQUIRED					
Item	Part Number	Description	Qty. per Coach	Units	Notes
1	75NM05000	NUT-M5X0.80 FLG CL10.9 ZN-NI	2	EA	
2	1048317	ASSY-WELD FUSEBOX GND	1	EA	
3					
4					
5					
6					
7					
8					
9					