



FIELD KIT

Vermeer Corporation

Environmental
Pella, Iowa 50219 USA

FIELD CAMPAIGN KIT #:	IK004413	DATE:	16 November 2023
<i>For Dealer Reference: Service Bulletin #: SVC2024-002</i>			

Deutz Engine Emissions Label Kit

CAMPAIGN TYPE:	Mandatory - Product Compliance DEALER INSTALLATION ONLY
CAMPAIGN CATEGORY:	Kit and Bulletin

MACHINE/ ATTACHMENT MODEL(S):	SERIAL NUMBERS:		
	Included	Excluded	Kit version
BC1000XL	52671, 52676, 52737, 52751, 52959, 52969, 53267, 53566, 53568, 53711	None	IK01 Inspection only
BC1000XL	See attached listing on pages 2 – 6 for specific serial numbers	None	IK02 Install KIT



ENGINE EMISSIONS CONTROL INFORMATION LABELS PROVIDED WITH MISSING OR INCORRECT INFORMATION. Engine Emissions Control Information (ECI) labels provided by Deutz AG applied to G2.9 gasoline engines installed in affected machines may have contained misprints or incorrect label language that is not part of the applicable regulatory content in the U.S. and Canada.

IMMEDIATE MACHINE MODIFICATIONS REQUIRED. IK004413 has been created to provide corrected engine ECI labels and instructions for their installation. **This kit must be installed as soon as possible, including submission of required information as set forth in the kit instructions.**

Special tools and conditions:

- None

AFFECTED MACHINES - IK024413

MODEL	SERIAL NUMBER	ENGINE SERIAL NUMBER	MODEL	SERIAL NUMBER	ENGINE SERIAL NUMBER
BC1000XL	52431	12885566	BC1000XL	52537	12818606
BC1000XL	52432	12884897	BC1000XL	52538	12828234
BC1000XL	52433	12884890	BC1000XL	52539	12818608
BC1000XL	52434	12884891	BC1000XL	52540	12818082
BC1000XL	52435	12885565	BC1000XL	52541	12799286
BC1000XL	52436	12885564	BC1000XL	52542	12799289
BC1000XL	52437	12884776	BC1000XL	52543	12818077
BC1000XL	52438	12885563	BC1000XL	52544	12803894
BC1000XL	52439	12884774	BC1000XL	52545	12818080
BC1000XL	52440	12884894	BC1000XL	52572	12818081
BC1000XL	52477	12818616	BC1000XL	52573	12818617
BC1000XL	52478	12800188	BC1000XL	52575	12818601
BC1000XL	52479	12803895	BC1000XL	52576	12799294
BC1000XL	52480	12818084	BC1000XL	52577	12799287
BC1000XL	52481	12800187	BC1000XL	52578	12799292
BC1000XL	52482	12800384	BC1000XL	52579	12818610
BC1000XL	52483	12803896	BC1000XL	52580	12818086
BC1000XL	52484	12804683	BC1000XL	52581	12828239
BC1000XL	52485	12818603	BC1000XL	52582	12804686
BC1000XL	52486	12808266	BC1000XL	52583	12828238
BC1000XL	52487	12799291	BC1000XL	52584	12815716
BC1000XL	52488	12804684	BC1000XL	52585	12818605
BC1000XL	52489	12795994	BC1000XL	52586	12799288
BC1000XL	52490	12818612	BC1000XL	52587	12828235
BC1000XL	52491	12800189	BC1000XL	52588	12818618
BC1000XL	52492	12799293	BC1000XL	52589	12803893
BC1000XL	52493	12800386	BC1000XL	52590	12800387
BC1000XL	52494	12799290	BC1000XL	52591	12803891
BC1000XL	52495	12800186	BC1000XL	52606	12803897
BC1000XL	52496	12818609	BC1000XL	52607	12795997
BC1000XL	52526	12818602	BC1000XL	52608	12800385
BC1000XL	52527	12818597	BC1000XL	52609	12804685
BC1000XL	52528	12804690	BC1000XL	52610	12815723
BC1000XL	52529	12795996	BC1000XL	52646	12818599
BC1000XL	52531	12803890	BC1000XL	52647	12818596
BC1000XL	52532	12818600	BC1000XL	52648	12790718
BC1000XL	52533	12818604	BC1000XL	52649	12818085
BC1000XL	52534	12804691	BC1000XL	52650	12818619
BC1000XL	52535	12818613	BC1000XL	52652	12787053
BC1000XL	52536	12818083	BC1000XL	52653	12804688

AFFECTED MACHINES - IK024413

MODEL	SERIAL NUMBER	ENGINE SERIAL NUMBER	MODEL	SERIAL NUMBER	ENGINE SERIAL NUMBER
BC1000XL	52654	12828241	BC1000XL	52758	12932601
BC1000XL	52655	12815715	BC1000XL	52759	12932598
BC1000XL	52667	12815713	BC1000XL	52760	12932163
BC1000XL	52668	12790717	BC1000XL	52771	12932603
BC1000XL	52669	12790725	BC1000XL	52772	12828236
BC1000XL	52670	12818078	BC1000XL	52773	12815722
BC1000XL	52672	12815717	BC1000XL	52774	12932604
BC1000XL	52673	12790721	BC1000XL	52775	12932151
BC1000XL	52674	12777350	BC1000XL	52776	12815725
BC1000XL	52675	12790723	BC1000XL	52777	12932602
BC1000XL	52696	12815720	BC1000XL	52778	12932599
BC1000XL	52697	12815726	BC1000XL	52779	12812026
BC1000XL	52698	12815718	BC1000XL	52780	12932600
BC1000XL	52699	12790722	BC1000XL	52937	12872214
BC1000XL	52700	12808267	BC1000XL	52938	12872205
BC1000XL	52701	12790720	BC1000XL	52939	12872204
BC1000XL	52702	12925415	BC1000XL	52940	12818087
BC1000XL	52703	12815712	BC1000XL	52941	12872208
BC1000XL	52704	12828242	BC1000XL	52942	12884780
BC1000XL	52705	12818598	BC1000XL	52943	12804687
BC1000XL	52716	12828240	BC1000XL	52944	12872209
BC1000XL	52717	12818607	BC1000XL	52945	12872211
BC1000XL	52718	12815721	BC1000XL	52946	12872207
BC1000XL	52719	12818079	BC1000XL	52947	12818615
BC1000XL	52720	12815724	BC1000XL	52948	12828237
BC1000XL	52721	12932162	BC1000XL	52949	12884889
BC1000XL	52722	12815714	BC1000XL	52950	12932153
BC1000XL	52723	12790719	BC1000XL	52951	12884782
BC1000XL	52724	12818614	BC1000XL	52953	12932158
BC1000XL	52725	12932155	BC1000XL	52955	12872212
BC1000XL	52736	12932595	BC1000XL	52956	12945673
BC1000XL	52738	12932161	BC1000XL	52957	12872206
BC1000XL	52739	12932592	BC1000XL	52958	12932150
BC1000XL	52740	12932154	BC1000XL	52960	12945670
BC1000XL	52752	12932593	BC1000XL	52962	12808265
BC1000XL	52753	12932597	BC1000XL	52963	12945667
BC1000XL	52754	12932159	BC1000XL	52964	12945669
BC1000XL	52755	12932594	BC1000XL	52965	12945674
BC1000XL	52756	12932157	BC1000XL	52966	12884896
BC1000XL	52757	12931400	BC1000XL	52967	12884892

AFFECTED MACHINES - IK024413

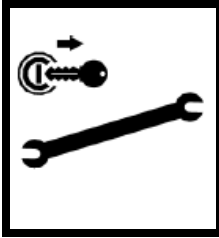
MODEL	SERIAL NUMBER	ENGINE SERIAL NUMBER	MODEL	SERIAL NUMBER	ENGINE SERIAL NUMBER
BC1000XL	52968	12932152	BC1000XL	53029	12850026
BC1000XL	52970	12884893	BC1000XL	53030	12846986
BC1000XL	52971	12884784	BC1000XL	53041	12950870
BC1000XL	52972	12932164	BC1000XL	53042	12950872
BC1000XL	52973	12945671	BC1000XL	53043	12849196
BC1000XL	52974	12872210	BC1000XL	53044	12884783
BC1000XL	52975	12872213	BC1000XL	53045	12951689
BC1000XL	52976	12945672	BC1000XL	53046	12950876
BC1000XL	52977	12846983	BC1000XL	53047	12950874
BC1000XL	52978	12950871	BC1000XL	53048	12884781
BC1000XL	52979	12950873	BC1000XL	53049	12846981
BC1000XL	52980	12885560	BC1000XL	53050	12951683
BC1000XL	52981	12932160	BC1000XL	53061	12849194
BC1000XL	52982	12884778	BC1000XL	53062	12846984
BC1000XL	52983	12846982	BC1000XL	53063	12884895
BC1000XL	52984	12885559	BC1000XL	53064	12932156
BC1000XL	52985	12846985	BC1000XL	53065	12957166
BC1000XL	52986	12850027	BC1000XL	53066	12957169
BC1000XL	52987	12849199	BC1000XL	53067	12957167
BC1000XL	52988	12850024	BC1000XL	53068	12960984
BC1000XL	52989	12849198	BC1000XL	53069	12960970
BC1000XL	52990	12849200	BC1000XL	53070	12960978
BC1000XL	52991	12850030	BC1000XL	53081	12960988
BC1000XL	52992	12885561	BC1000XL	53082	12960986
BC1000XL	52993	12884775	BC1000XL	53083	12960990
BC1000XL	52994	12849201	BC1000XL	53084	12957172
BC1000XL	52995	12885562	BC1000XL	53085	12957173
BC1000XL	53006	12850028	BC1000XL	53086	12804689
BC1000XL	53007	12850023	BC1000XL	53087	12951687
BC1000XL	53008	12849197	BC1000XL	53088	12960998
BC1000XL	53009	12884777	BC1000XL	53089	12954785
BC1000XL	53010	12884779	BC1000XL	53090	12960996
BC1000XL	53011	12850022	BC1000XL	53101	12960972
BC1000XL	53012	12850025	BC1000XL	53102	12960976
BC1000XL	53013	12849195	BC1000XL	53103	12960982
BC1000XL	53014	12849193	BC1000XL	53104	12957175
BC1000XL	53015	12850029	BC1000XL	53105	12957176
BC1000XL	53026	12951685	BC1000XL	53106	12957174
BC1000XL	53027	12950875	BC1000XL	53107	12960974
BC1000XL	53028	12951686	BC1000XL	53108	12960973

AFFECTED MACHINES - IK024413

MODEL	SERIAL NUMBER	ENGINE SERIAL NUMBER		MODEL	SERIAL NUMBER	ENGINE SERIAL NUMBER
BC1000XL	53109	12960980		BC1000XL	53210	12966277
BC1000XL	53110	12957183		BC1000XL	53221	12966629
BC1000XL	53122	12957184		BC1000XL	53222	12966634
BC1000XL	53123	12957177		BC1000XL	53223	12966632
BC1000XL	53124	12957179		BC1000XL	53224	12965669
BC1000XL	53125	12960994		BC1000XL	53225	12965670
BC1000XL	53126	12960992		BC1000XL	53226	12965668
BC1000XL	53127	12960997		BC1000XL	53227	12951684
BC1000XL	53141	12957170		BC1000XL	53228	12960985
BC1000XL	53142	12957171		BC1000XL	53229	12960991
BC1000XL	53143	12957168		BC1000XL	53230	12960995
BC1000XL	53144	12960989		BC1000XL	53247	12966637
BC1000XL	53145	12960987		BC1000XL	53248	12966628
BC1000XL	53146	12960993		BC1000XL	53249	12967540
BC1000XL	53147	12960979		BC1000XL	53250	12967533
BC1000XL	53148	12960981		BC1000XL	53261	12836808
BC1000XL	53149	12960977		BC1000XL	53265	12966648
BC1000XL	53150	12951688		BC1000XL	53266	12966649
BC1000XL	53161	12960975		BC1000XL	53268	12966285
BC1000XL	53162	12960983		BC1000XL	53269	12966276
BC1000XL	53163	12960971		BC1000XL	53270	12967034
BC1000XL	53170	12957178		BC1000XL	53281	12967537
BC1000XL	53181	12957180		BC1000XL	53282	12967033
BC1000XL	53182	12957182		BC1000XL	53283	12966624
BC1000XL	53183	12965665		BC1000XL	53284	12966626
BC1000XL	53184	12965671		BC1000XL	53288	12967530
BC1000XL	53185	12965661		BC1000XL	53289	12967532
BC1000XL	53186	12965660		BC1000XL	53290	12967538
BC1000XL	53187	12965666		BC1000XL	53301	12967529
BC1000XL	53188	12965662		BC1000XL	53302	12967535
BC1000XL	53189	12966645		BC1000XL	53303	12967541
BC1000XL	53190	12966627		BC1000XL	53304	12967542
BC1000XL	53201	12966630		BC1000XL	53305	12967528
BC1000XL	53202	12966633		BC1000XL	53306	12967531
BC1000XL	53203	12966636		BC1000XL	53307	12965674
BC1000XL	53204	12966646		BC1000XL	53308	12965673
BC1000XL	53205	12966281		BC1000XL	53309	12965672
BC1000XL	53207	12966280		BC1000XL	53310	12967026
BC1000XL	53208	12966283		BC1000XL	53321	12967025
BC1000XL	53209	12966282		BC1000XL	53322	12967031

AFFECTED MACHINES - IK024413

MODEL	SERIAL NUMBER	ENGINE SERIAL NUMBER		MODEL	SERIAL NUMBER	ENGINE SERIAL NUMBER
BC1000XL	53323	12967534		BC1000XL	53350	12965664
BC1000XL	53324	12967536		BC1000XL	53361	12966640
BC1000XL	53325	12967539		BC1000XL	53362	12966631
BC1000XL	53329	12967024		BC1000XL	53363	12966625
BC1000XL	53330	12967029		BC1000XL	53364	12966644
BC1000XL	53341	12967035		BC1000XL	53365	12966642
BC1000XL	53342	12967023		BC1000XL	53366	12966638
BC1000XL	53343	12967032		BC1000XL	53370	12966284
BC1000XL	53344	12967036		BC1000XL	53381	12950868
BC1000XL	53345	12967030		BC1000XL	53403	12966641
BC1000XL	53346	12967028		BC1000XL	53404	12966635
BC1000XL	53347	12967027		BC1000XL	53405	12966650
BC1000XL	53348	12965663		BC1000XL	53424	12966639
BC1000XL	53349	12965667		BC1000XL	53425	12966647
				BC1000XL	53426	12966643



WARNING: Failure to use shutdown procedure can result in unexpected hazard(s). Death or serious injury could result due to entanglement, crushing, cutting, or other hazardous contact. Follow shutdown procedure after operating, before performing any service or maintenance, and before transporting.

Shutdown procedure BC1000XL

Stopping the machine

NOTICE: For your safety and the safety of others, use the shutdown procedure before working on the machine for any reason, including servicing, cleaning, unclogging, inspecting or transporting the chipper.

A variation of this procedure may be used if so instructed within this manual, or if an emergency requires it.

1. Return *upper feed control bar* to top STOP position.
2. Slow the engine speed to low idle.

NOTICE: Whenever practical and safe, allow engine to idle for one to five minutes before shutting down after operating at full power. Please consult machine's engine manual for details.

3. Wait for cutter drum to slow.
4. Place *clutch lever* in the DISENGAGED position.
5. Turn ignition key to off position.
6. Wait for cutter drum and belt to stop.

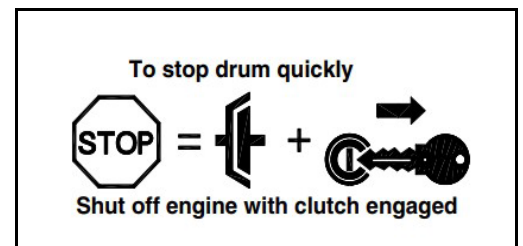
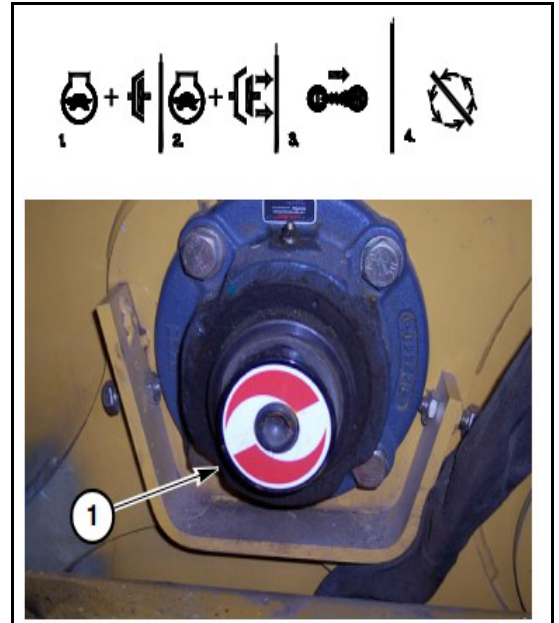
NOTICE: Cutter drum rotation can be checked by looking at the end of the shaft (1) on the left side of the cutter wheel housing. The cutter drum will continue to turn for a short time after the engine has stopped.

7. Remove ignition key.
8. Close and latch feed table.

Quick stop procedure

1. Turn ignition to the off position while cutter drum clutch is still engaged. Remove key.
2. Wait for cutter drum and belt to stop.

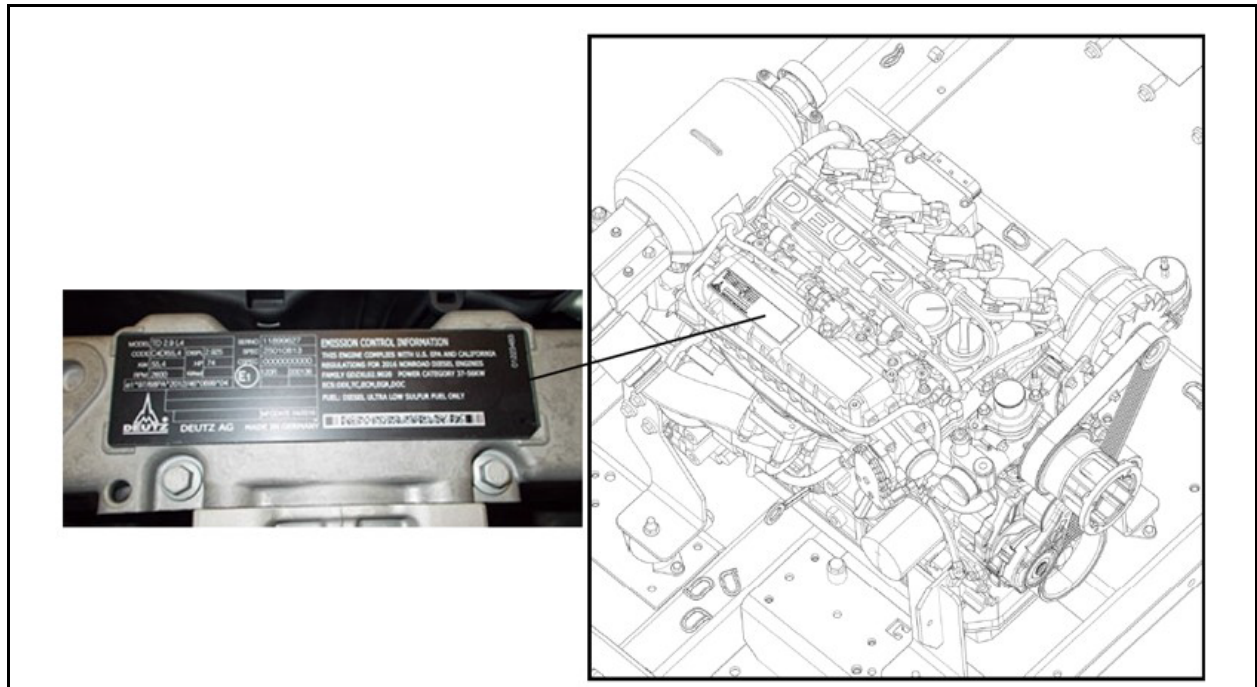
Fully disengage cutter drum.



Unless indicated, new parts from kit have callouts with numbers. Callouts with letters indicate existing parts or general items.

Procedure 1: ECI label inspection procedure for IK01

1. Locate ECI label on air intake manifold on top of engine.

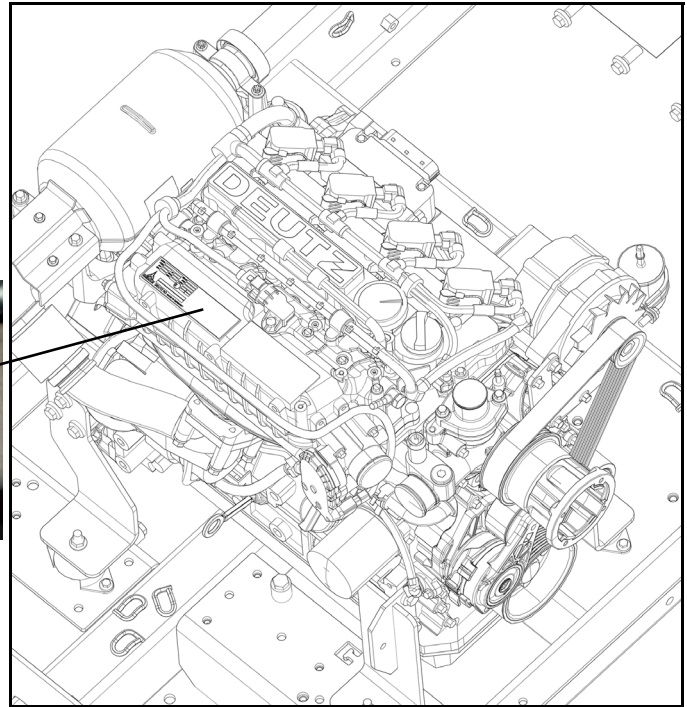


2. Take a picture of the ECI label

- Email the picture with the completed engine ECI label inspection form to safetyform@vermeer.com to receive \$25.00 parts credit certificate and for Vermeer to update records.

Procedure 1: ECI label inspection procedure for IK02

1. Locate ECI label on air intake manifold on top of engine.
2. Verify engine is cool before removing ECI label.
3. Before removing existing ECI label from the engine, be sure to check engine serial number of the label. It should be identical to that listed on the existing label. If not, stop and contact Vermeer Product Safety and Compliance Department for assistance at (641) 621-7060. Hold the new label in safe keeping until directed on how to proceed.
4. If serial number is correct, remove ECI label from engine.



5. Once old label has been removed from engine, a BEFORE photo needs to be taken of label being cut into pieces. Then take an AFTER photo of the label after being cut up. Ensure that the serial number is readable in both images. See photo examples.
6. Attach both photos to warranty claim and return to Vermeer.



7. Attach new ECI label provided by Deutz on engine manifold.

