



## Preliminary Information

### PIT6078 Front and or Rear Windows Inoperative

#### Models

Brand:	Model:	Model Years:	VIN:		Engine:	Transmissions:
			from	to		
Chevrolet	Blazer EV	2024	All	All	All	All

Involved Region or Country	North America
Additional Options (RPO)	None
Condition	<p>The front and/or rear windows are inoperative from the driver's switch.</p> <p>If the rear windows are inoperative they may still work from the rear switches. (see correction 1)</p> <p>The front windows work normally but the rear windows are inoperative from the rear switches. (see correction 2)</p> <p>Codes U0215, U0216, U0217, U0218, U1502, U1503 may be found with either condition.</p> <p>This condition may be intermittent.</p>
Cause	Faulty window switch

#### Correction 1

Remove the driver's door trim panel and inspect the window switch for a sticker on the back of the switch. If the switch has a pink or cyan sticker as shown below, test for loose/ bent terminals or circuit faults. If no wiring or terminal concerns are found, the switch may be faulty.





If the switch has no sticker or it has a sticker that is not pink or cyan, replace the window switch.  
Order the replacement switch using EPC. (electronic parts catalog)

#### Correction 2

Remove the rear door trim panel on the affected side/s.

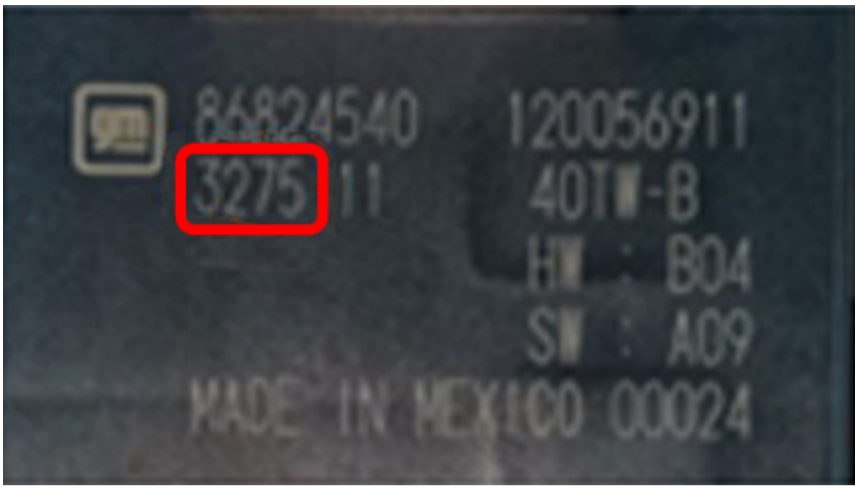
Inspect the Julian date code on the switch.

The date code is located below the part number as shown below.

If the date code is 3156 or 3166 replace the affected switch/s.

Order the replacement switch using EPC. (electronic parts catalog)





If the date code is not 3156 or 3166 test for loose/bent terminals or circuit faults.  
If no wiring or terminal concerns are found, the switch may still be faulty.

Version History

Version	1
Modified	Created on 10/23/2023



© 2023 General Motors. All Rights Reserved.