

2024 LX 600 Pre-Delivery Service (PDS)

Service Category General

Section Pre-Delivery Service

Market USA

Toyota Supports
ASE Certification 

Applicability

YEAR(S)	MODEL(S)	ADDITIONAL INFORMATION
2024	LX600	

Introduction

Pre-Delivery Service (PDS) is a critical step in satisfying our new car customers. Customer feedback indicates the following areas deserve special attention when performing PDS:

- Careful inspection for paint chips/scratches and body dents/dings.
- Proper operation of electrical accessories (including interior light, clock, and radio reset).
- Interior cleanliness.
- Proper function of mechanical systems.

Customer retention and proper maintenance of vehicles are and have always been a major focus for Lexus. To help remind customers that regular service is essential to the proper maintenance of the vehicle, dealers are required to input their dealer information and set the service reminder on the Navigation Screen before delivery. By doing this, customers will be reminded to return to your dealership for service. (See Page 2 of the LX 600 PDS [Check Sheet](#), "Set Dealer and Service Reminder.")

This bulletin contains the PDS procedures that apply specifically to the 2024 model year LX 600. To properly perform a complete PDS, you must complete all procedures contained in this TSB as well as the LX 600 PDS [Check Sheet](#).

In addition, if the vehicle is stored for over 30 days, be sure to follow [Long-Term Vehicle Storage Guidelines](#).

2024 LX 600 Pre-Delivery Service (PDS)

Table of Contents

- [Warranty Information](#) 3
- [Required Tools & Equipment](#) 3
- [D/C Cut Fuse \(30A\) Installation](#) 4
- [Front License Plate and Mounting Bracket Installation*](#) 5
- [Installation of Towing Hitch Cover*](#) 7
- [Tire Pressure Warning System Initialization](#) 7
- [Seating Position Control ECU Initialization](#) 7
- [Head Unit System Reset](#) 8
- [Dealer Contact Information for Call Dealer Head Unit Function](#) 8
- [Navigation — Set Date & Time by GPS](#) 8

*If applicable.

2024 LX 600 Pre-Delivery Service (PDS)

Warranty Information

OP CODE	DESCRIPTION	TIME	OFF	T1	T2
N/A	Not Applicable to Warranty	-	-	-	-

Required Tools & Equipment

REQUIRED EQUIPMENT	SUPPLIER	PART NUMBER	QTY
Techstream ADVi*	ADE	TSADVUNIT	1
Techstream 2.0		TS2UNIT	
Techstream Lite		TSLITEPDLR01	
Techstream Lite (Green Cable)		TSLP2DLR01	

*Essential SST.

NOTE

- Only ONE of the Techstream units listed above is required.
- GTS+ software version 2023.03.002.02 or later is required.
- Additional Techstream units may be ordered by calling Approved Dealer Equipment (ADE) at 1-800-368-6787.

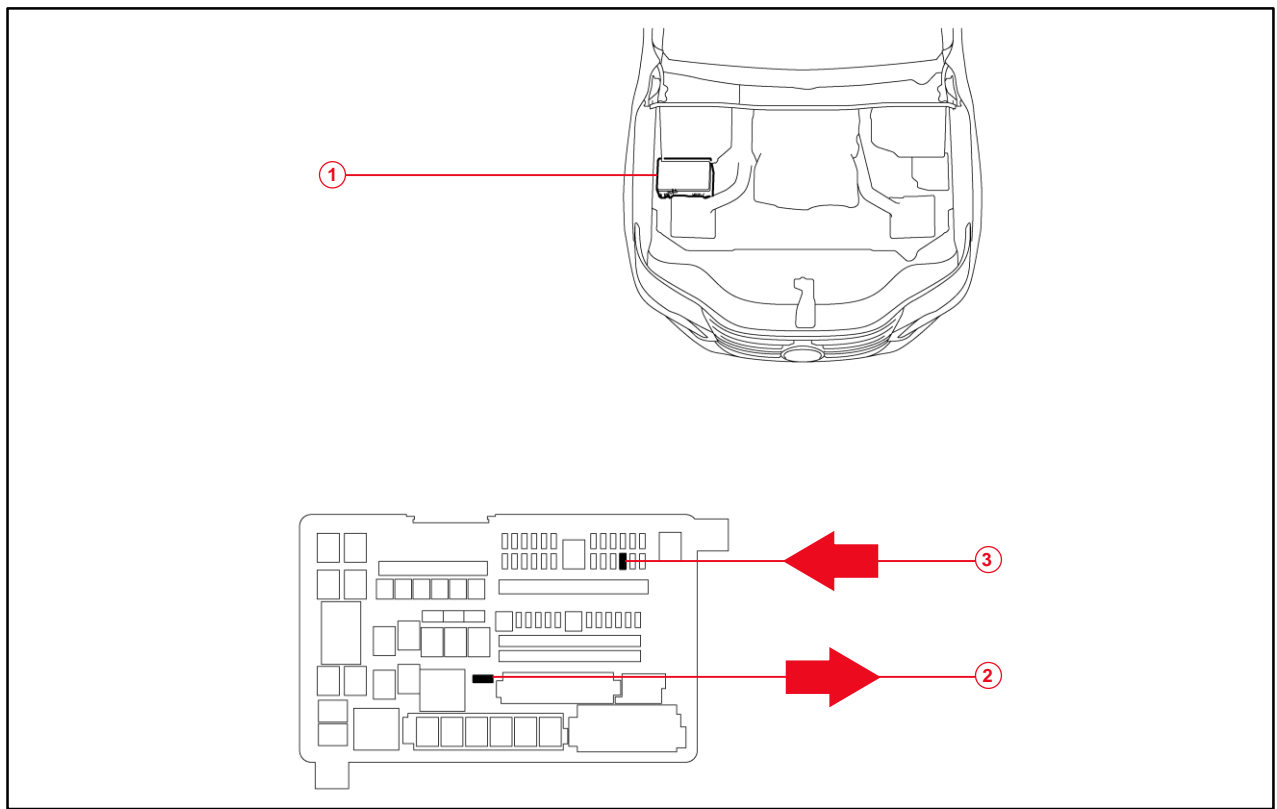
2024 LX 600 Pre-Delivery Service (PDS)

D/C Cut Fuse (30A) Installation

To minimize battery discharge during transportation and storage, the D/C cut fuse (30A) has been removed at the assembly plant and temporarily stored in the blank space of the relay block in the engine compartment. During PDS, reinstall the D/C cut fuse (30A) to its original location and confirm ALL related Diagnostic Trouble Codes (DTCs) are cleared.

Remove the D/C cut fuse (30A) from the blank space of the relay block in the engine compartment and install the D/C cut fuse (30A) in the relay block as shown.

Figure 1.



1	Relay Block
2	Remove D/C Cut Fuse (30A)

3	Install D/C Cut Fuse (30A) (Original Location)
----------	---

NOTE

- With the D/C cut fuse removed, if ANY DTCs are detected when the ignition is turned on during transportation, use Global Techstream Software (GTS+) to clear ALL DTCs AFTER ensuring that there are no malfunctions.
- While the vehicle is stored at the dealership, disconnect the negative (-) battery terminal to prevent battery discharge. Refer to [L-SB-0016-23](#), *Battery Maintenance During PDS*, for battery maintenance information.

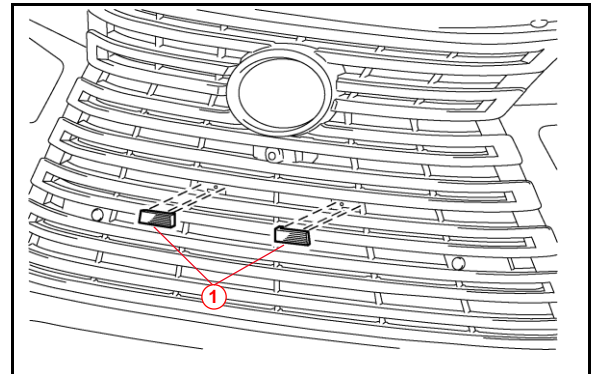
2024 LX 600 Pre-Delivery Service (PDS)

Front License Plate and Mounting Bracket Installation

The front license plate mounting bracket and two self-tapping screws are stored in the rear cargo area of the vehicle. For states that require a front license plate, install the license plate and mounting bracket during PDS.

1. Remove the two radiator grille mouldings by disengaging the three claws on each one.

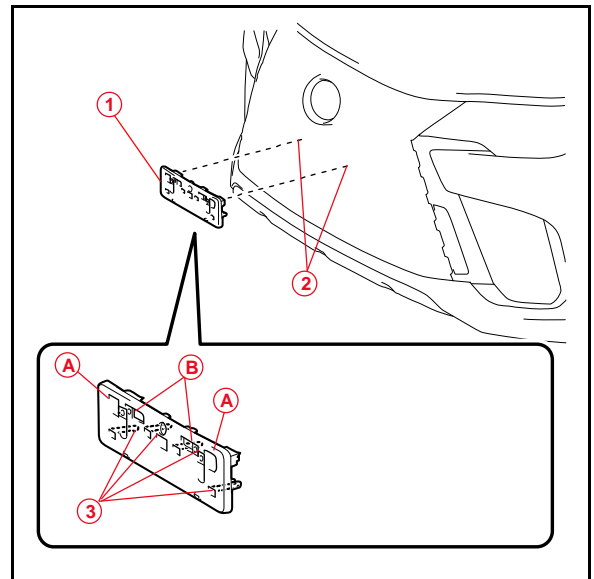
Figure 2.



1	Radiator Grille Mouldings
----------	----------------------------------

2. Attach the front license plate mounting bracket hooks to the air intake of the radiator grille and hold it in place.
3. Align holes "A" of the mounting bracket with the installation holes on the radiator grille.

Figure 3.



1	Mounting Bracket
2	Installation Holes
3	Hooks

NOTE

- Holes "A" are used to install the mounting bracket to the bumper cover.
- Holes "B" are used to install the front license plate to the mounting bracket.

2024 LX 600 Pre-Delivery Service (PDS)

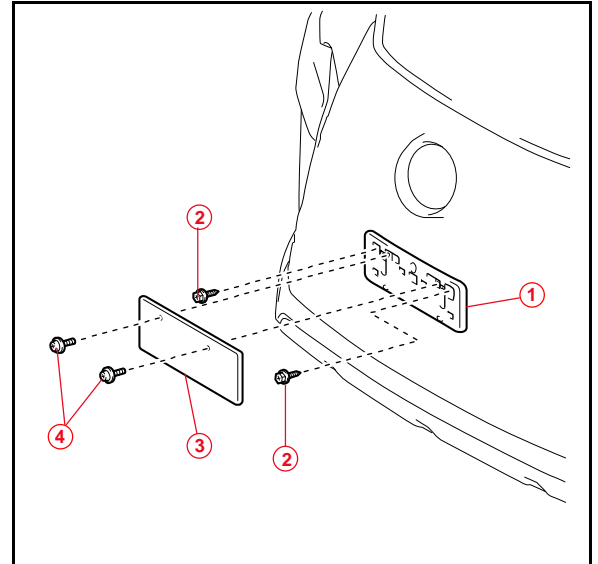
Front License Plate and Mounting Bracket Installation (continued)

- Install the mounting bracket to the radiator grille using the two self-tapping screws provided.

NOTICE

Do NOT overtighten the self-tapping screws.

Figure 4.



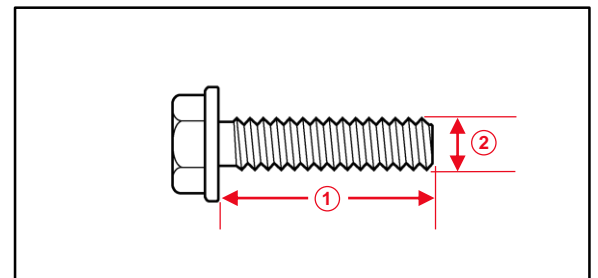
1	Mounting Bracket
2	Self-tapping Screws
3	License Plate
4	Bolts

- Install the front license plate using two noncorroding bolts with the following dimensions:

Nominal Length: 15.0 mm (0.59 in.)

Diameter: 6.0 mm (0.24 in.)

Figure 5.



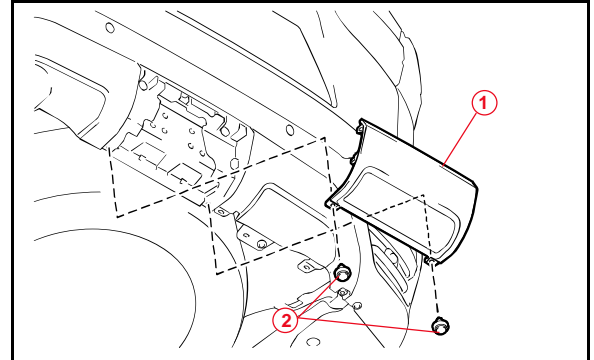
1	Nominal Length
2	Diameter

2024 LX 600 Pre-Delivery Service (PDS)

Installation of Towing Hitch Cover

Attach the two provided clips to install the towing hitch cover.

Figure 6.



1	Towing Hitch Cover
2	Clips

Tire Pressure Warning System (TPWS) Initialization

Refer to the applicable Repair Manual for the TPWS [initialization procedure](#). Note the spare tire does NOT have a TPWS sensor.

NOTE

To adjust the tire pressure correctly when the outside temperature is significantly colder than shop temperature, perform a Health Check using GTS+ and select the compensation tire pressure checkbox. Compensation pressures will display on the Health Check results screen. Adjust the tire pressure when the tires are cold.

Seating Position Control ECU Initialization

Refer to the applicable Repair Manual for the seating position control ECU [initialization procedure](#) (procedure 3).

2024 LX 600 Pre-Delivery Service (PDS)

Head Unit System Reset

Confirm that the welcome screen with language options appears on the head unit display when ignition is switched to the ON position. There may be instances where the welcome screen with language options may not properly appear on the head unit display.

If the welcome screen showing language options is NOT displayed, complete the following steps:

1. Select the Settings option (gear icon).
2. Scroll down and select the Info & Security option.
3. The System Reset dialogue box will appear. Select Reset to confirm the resetting of the system.
4. Confirm that the welcome screen with language options is displayed.

Dealer Contact Information for Call Dealer Head Unit Function

Refer to the *Multimedia System Owner's Manual* to [add dealer contact information](#).

See section 2-8 *Other Settings – Vehicle Settings – Vehicle Settings Screen*.

Navigation — Set Date & Time by GPS

Before selling a Toyota vehicle, it is necessary to turn the Set Date & Time by GPS setting to the ON position.

1. Turn the engine switch (power switch) to the ON position (ON mode).
2. Navigate the following menus in the head unit: *Settings – General – Date & Time – Set date & time by GPS*.
3. Ensure the Set Date & Time by GPS function is set to the ON position.