



GROUP	MODEL
BOD	2023MY K5 (DL3a)
NUMBER	DATE
322	November 2023

## TECHNICAL SERVICE BULLETIN

### SERVICE ACTION: TRUNK LID AND C-PILLAR GARNISH INSPECTION & REPLACEMENT (SA552)

SUBJECT:

This bulletin provides information to inspect the rear trunk lid chrome garnish trim and the C-Pillar(s) chrome garnish trim on certain 2023MY K5 (DL3a) vehicles produced from May 1, 2023 through September 29, 2023, which may be loose due to an insufficient lamination layer. Follow the procedure outlined in this publication to inspect the rear trunk lid chrome trim, and both left and right side C-pillar chrome trims, and replace the affected rear trunk lid chrome trim and/or the (left and/or right side) C-Pillar(s) chrome trim on the applicable vehicle. Before conducting the procedure, verify that the vehicle is included in the list of affected VINs.



#### NOTICE

**A Service Action is a repair program without customer notification that is performed during the warranty period. Any dealer requesting to perform this repair outside the warranty period will require DPSM approval.**

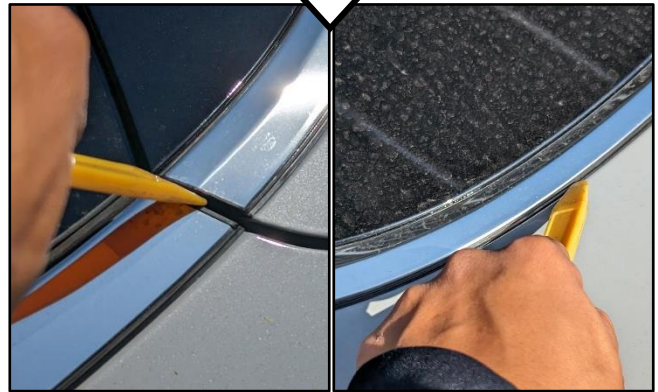
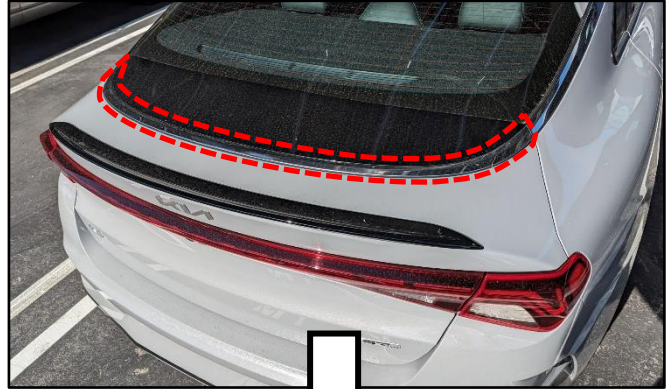
Repair status for a VIN is provided on KDealer+ (Service → Warranty Coverage → Warranty Coverage Inquiry → Campaign Information). Not completed Recall / Service Action reports are available on KDealer+ (Consumer Affairs → Not Completed Recall → Recall VIN → Select Report), which includes a list of affected vehicles.

This issue number is SA552.

**Inspection Procedure:**

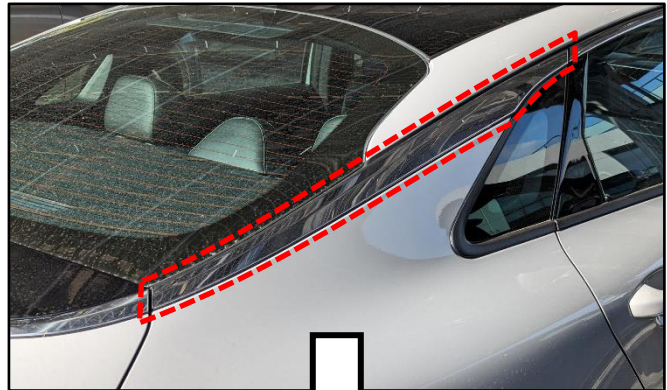
- Using a non-marring plastic trim tool, carefully pry 'light' upward pressure in between the rear chrome trunk lid garnish rubber and the trunk lid.

- If the rear chrome trunk lid garnish is not separated (loose) when inspected **(OK)**, then proceed to step 2.
- If the rear chrome trunk lid garnish is separated (loose) when inspected **(NG)**, then refer to the rear trunk lid garnish by referring to the 'Replacement Procedure' on page 3, and proceed to step 2.



- Using a non-marring plastic trim tool, carefully pry 'light' upward pressure in between the rear C-Pillar chrome garnish rubber and the body.

- If the rear chrome C-Pillar garnish is not separated (loose) when inspected **(OK)**, then no further action is required unless the rear trunk lid garnish requires replacement.
- If the rear chrome C-Pillar garnish is separated (loose) when inspected **(NG)**, then replace the rear trunk lid garnish by referring to the 'Replacement Procedure' on page 4.



## SUBJECT: TRUNK LID AND C-PILLAR GARNISH INSPECTION &amp; REPLACEMENT (SA552)

**Replacement Procedure: (Trunk Lid Garnish)**

1. Remove the rear trunk lid garnish (A) by referring to "Body (Interior and Exterior) → Body Side Molding → Trunk Lid garnish → Repair Procedures" in the applicable Shop Manual in KGIS.

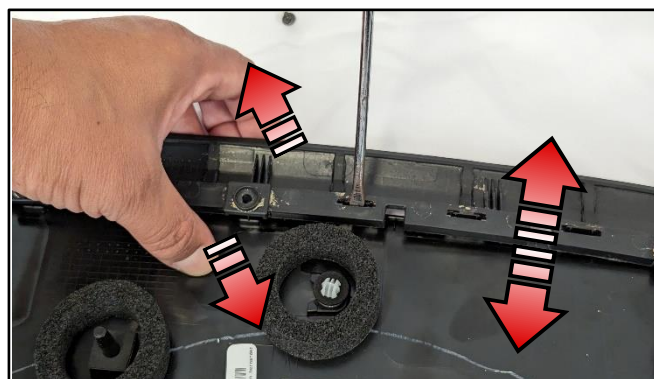
**⚠ CAUTION**

Carefully remove the trunk lid garnish. The 'new' trunk lid garnish 'gloss black' trim DOES NOT come painted. Be extra careful not to scratch/damage when handling. If it is damaged, the new part will need to be painted to match and require additional DPSM approval.



2. Carefully place the removed rear trunk lid garnish face down over a clean cloth to protect the gloss black painted surface.
3. Loosen the eight (8) chrome trim retaining screws (X).
4. Using a flat head screwdriver, detach/unlock the eighteen (18) locking tabs to detach the chrome trim from the gloss black trim.

TIP: Use your thumb to hold down the black trim while lifting up using your other four fingers while unblocking tabs.



5. Repeat steps 2-4 on the 'new' trunk lid garnish to separate the trim pieces.

**ⓘ IMPORTANT**

The removed black trim will need to be reused as only the chrome trim is being replaced.





SUBJECT: **TRUNK LID AND C-PILLAR GARNISH INSPECTION & REPLACEMENT (SA552)**

6. Take the 'new' chrome trim and attach to the 'original' removed painted gloss black trim.
7. Reassemble the trunk lid garnish in the reverse order of removal.



**NOTICE**

**Any broken clips can be replaced by swapping over from the clips that were attached to the new trim part.**

Swap/replace any broken clips as needed.



8. Carefully reinstall the reassembled rear trunk lid garnish on the vehicle.
9. Confirm it is not loose or detached.

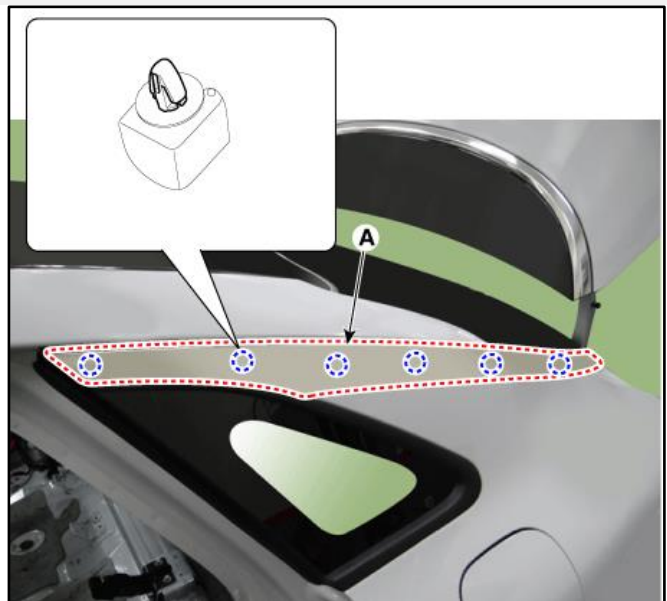


**Replacement Procedure: (C-Pillar Garnish)**

1. Replace the affected (Left and/or Right side) rear C-Pillar garnish (B) by referring to "Body (Interior and Exterior) → Quarter Fixed Glass → Repair Procedures (C-Pillar Garnish, step 2)" in the applicable Shop Manual in KGIS.

**Note:** The new C-Pillar garnish includes new clips.

2. Confirm it is not loose or detached.



## SUBJECT: TRUNK LID AND C-PILLAR GARNISH INSPECTION &amp; REPLACEMENT (SA552)

## AFFECTED VEHICLE RANGE:

Model	Production Date Range
K5 (DL3a)	May 1, 2023 to September 29, 2023

## REQUIRED PART:

Part Name	Part Number	Figure	Qty.
C-Pillar Garnish (Right Side)	87860 L2000	N/A	1
C-Pillar Garnish (Left Side)	87850 L2000	N/A	1
Trunk Lid Garnish (Rear)	87360 L3000	N/A	1

**Note:** The replacement part numbers will require a VIN entry for parts ordering. DO NOT order these parts for stocking purposes, related to this Service Action. Supply is very limited. Until supply stabilizes, please confirm part availability before scheduling customers. Please be sure to expedite warranty claim filing.

## WARRANTY INFORMATION:

**N Code: N99 C Code: C99**

Claim Type	Causal P/N	Qty.	Repair Description	Labor Op Code	Op Time	Replacement P/N	Qty.
V	87360 L3000	0	(SA522) Inspection Only	230A3510	0.3 M/H	N/A	0
	87360 L3000		(SA552) Inspection + Trunk Lid Garnish Replacement	230A35R0	0.8 M/H	87360 L3000	1
	87860 L2000		(SA552) Inspection + Right C-pillar Garnish Replacement	230A35R1	0.5 M/H	87860 L2000	1
	87850 L2000		(SA552) Inspection + Left C-pillar Garnish Replacement	230A35R2	0.5 M/H	87850 L2000	1

*Continued on page 4...*



**WARRANTY INFORMATION:**

**N Code: N99 C Code: C99**

Claim Type	Causal P/N	Qty.	Repair Description	Labor Op Code	Op Time	Replacement P/N	Qty.
V	87850 L2000	0	(SA552) Inspection + Right <u>and</u> Left C-pillar Garnish Replacement	230A35R3	0.6 M/H	87850 L2000	1
						87860 L2000	
	87360 L3000		(SA552) Inspection + Right C-pillar Garnish + Trunk Lid Garnish Replacement	230A35R4	1.0 M/H	87360 L3000	1
						87860 L2000	
	87360 L3000		(SA552) Inspection + Left C-pillar Garnish + Trunk Lid Garnish Replacement	230A35R5	1.0 M/H	87360 L3000	1
						87850 L3000	
	87360 L3000		(SA552) Inspection + Right <u>and</u> Left C-pillar Garnish + Trunk Lid Garnish Replacement	230A35R6	1.1 M/H	87360 L3000	1
						87860 L2000	
						87850 L2000	

**NOTICE**

VIN inquiry data for this repair is provided for tracking purposes only. Kia retailers should reference **SA552** when accessing the KDealer+ system.

