



TECHNICAL SERVICE BULLETIN

Classification: RS23-001	Reference: NTB23-005	Date: October 10, 2023
-----------------------------	-------------------------	---------------------------

SPECIAL REAR SEAT BELT REPAIR

APPLIED VEHICLES: 2023 Rogue (T33)
APPLIED DATES: Built from August 15, 2022 to September 15, 2022
APPLIED VINS: Refer to **Table 1** on page 2

SERVICE INFORMATION

When servicing the outboard rear seat belts on an **APPLIED VEHICLE**, determine if the VIN on the vehicle you are working on matches a VIN listed in **Table 1** on page 2.

- If the VIN matches one listed in **Table 1**, refer to the information in this bulletin.
- If the VIN does NOT match one listed in **Table 1**, refer to the EPC and the ESM.

Bulletins are intended for use by qualified technicians, not 'do-it-yourselfers'. Qualified technicians are properly trained individuals who have the equipment, tools, safety instruction, and know-how to do a job properly and safely. **NOTE:** If you believe that a described condition may apply to a particular vehicle, DO NOT assume that it does. See your Nissan dealer to determine if this applies to your vehicle.

HINT: Use Ctrl F on your keyboard to search for your 17 character VIN, and ensure all 17 characters are a match.

Table 1

5N1AT3AA8PC671974	5N1BT3BA1PC672113	5N1BT3BB4PC672048
5N1AT3AA9PC672020	5N1BT3BA1PC672127	5N1BT3BB4PC672129
5N1AT3AAXPC672009	5N1BT3BA2PC671987	5N1BT3BB5PC671992
5N1AT3AB0PC672061	5N1BT3BA2PC672024	5N1BT3BB5PC672012
5N1AT3AB1PC672120	5N1BT3BA2PC672122	5N1BT3BB5PC672110
5N1AT3AB3PC671986	5N1BT3BA3PC672033	5N1BT3BB6PC672018
5N1AT3AB4PC672029	5N1BT3BA3PC672047	5N1BT3BB6PC672035
5N1AT3AB6PC672050	5N1BT3BA4PC671991	5N1BT3BB6PC672116
5N1AT3AB6PC672114	5N1BT3BA4PC672011	5N1BT3BB7PC672027
5N1AT3AB7PC672039	5N1BT3BA4PC672042	5N1BT3BB7PC672030
5N1AT3AB7PC672106	5N1BT3BA5PC672017	5N1BT3BB7PC672108
5N1AT3AB8PC671188	5N1BT3BA5PC672034	5N1BT3BB8PC672019
5N1BT3AB1PC671019	5N1BT3BA5PC672115	5N1BT3BB8PC672036
5N1BT3AB1PC672025	5N1BT3BA6PC670955	5N1BT3BB8PC672053
5N1BT3AB1PC672056	5N1BT3BA6PC672026	5N1BT3BB9PC671977
5N1BT3AB1PC672123	5N1BT3BA6PC672060	5N1BT3BBXPC672023
5N1BT3AB3PC671975	5N1BT3BA6PC672107	5N1BT3BBXPC672121
5N1BT3AB3PC672043	5N1BT3BA6PC672124	5N1BT3CA0PC671985
5N1BT3AB4PC672021	5N1BT3BA7PC672049	5N1BT3CA0PC672022
5N1BT3AB5PC671993	5N1BT3BA7PC672052	5N1BT3CA1PC671994
5N1BT3AB6PC671971	5N1BT3BA8PC672044	5N1BT3CA1PC672028
5N1BT3AB7PC672014	5N1BT3BA8PC672058	5N1BT3CA4PC672038
5N1BT3AB7PC672059	5N1BT3BA9PC671968	5N1BT3CA4PC672105
5N1BT3AB7PC672126	5N1BT3BA9PC672117	5N1BT3CA4PC672119
5N1BT3AB7PC672546	5N1BT3BAXPC672031	5N1BT3CA7PC672051
5N1BT3AB8PC672118	5N1BT3BAXPC672109	5N1BT3CA7PC672132
5N1BT3AB9PC672032	5N1BT3BB0PC671186	5N1BT3CA8PC671989
5N1BT3AB9PC672046	5N1BT3BB0PC671995	5N1BT3CA8PC672057
5N1BT3ABXPC671990	5N1BT3BB1PC671973	5N1BT3CA9PC671175
5N1BT3ABXPC672010	5N1BT3BB1PC672041	5N1BT3CA9PC671970
5N1BT3ABXPC672380	5N1BT3BB1PC672055	5N1BT3CAXPC671184
5N1BT3BA0PC671972	5N1BT3BB2PC671979	5N1BT3CAXPC671976
5N1BT3BA0PC672037	5N1BT3BB2PC671996	5N1BT3CAXPC672111
5N1BT3BA0PC672040	5N1BT3BB2PC672016	5N1BT3CAXPC672125
5N1BT3BA0PC672054	5N1BT3BB2PC672128	5N1BT3CB0PC672045
5N1BT3BA1PC671978	5N1BT3BB2PC672551	
5N1BT3BA1PC672015	5N1BT3BB3PC671988	

SERVICE PROCEDURE

Outboard Lower Rear Seat Belt Anchor Bolt Inspection

HINT: The figures in this service procedure show the passenger (RH) side of the vehicle; the driver (LH) side is a mirror image.

1. Remove the rear seat bottom cushion.
 - Refer to the ESM: **BODY INTERIOR > SEAT > REMOVAL AND INSTALLATION > REAR SEAT > Removal and Installation**
2. Locate and inspect the outboard lower rear seat belt anchor bolt for the seat belt that requires replacing and note the bolt color (Figure 1 and Figure 2).
 - For a bolt that is **SILVER** with an 18mm head, continue to step 3 on page 4.
 - For a bolt that is **BLACK** with a 14mm head, this bulletin does not apply.

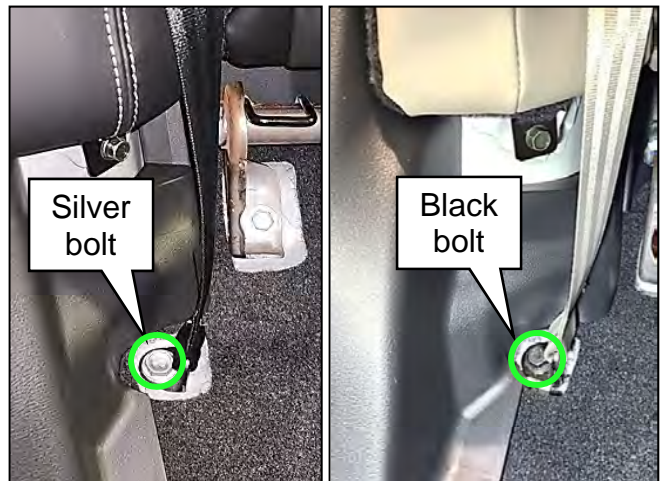


Figure 1

Figure 2

IMPORTANT: Silver bolts need to be replaced with one of the Service Kits found in **PARTS INFORMATION** on the last page.

Outboard Rear Seat Belt Replacement

3. Turn the ignition OFF.
4. Disconnect the negative and positive battery terminals, negative battery terminal first.
 - Refer to the ESM: **GENERAL INFORMATION > GENERAL INFORMATION > PRECAUTION > PRECAUTIONS > PRECAUTIONS FOR REMOVING BATTERY TERMINAL:Precautions**
5. Wait at least 3 minutes.
6. Remove the outboard rear seat belt.
 - Refer to the ESM: **RESTRAINTS > SEAT BELT > REMOVAL AND INSTALLATION > REAR SEAT BELT > SEAT BELT RETRACTOR > Removal and Installation**
 - Discard the outboard lower rear seat belt bolts, they will be replaced with new ones from one of the Service Kits in **PARTS INFORMATION**.
7. Install a new rear seat belt warning label on the new rear seat belt retractor.
 - The rear seat belt warning label should be installed and adhered correctly, as shown in Figure 3.

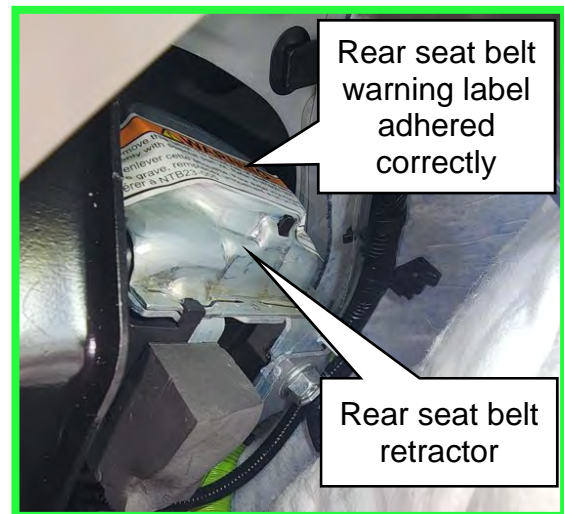


Figure 3

New SILVER Outboard Lower Rear Seat Belt Anchor Bolt Installation

8. Place the new SILVER outboard lower rear seat belt anchor bolt, washer, and seat belt warning label, as shown in Figure 4.
 - a. Install the seat belt warning label.
 - b. Verify the outboard lower rear seat belt anchor bolt washer is positioned between the bolt and the anchor plate.
 - c. Verify the anchor plate is parallel to the door opening.
 - d. Install and torque the lower rear seat belt anchor bolt.
 - o Lower rear seat belt anchor bolt torque: 85 N•m (8.6 kg-m, **63 ft-lb**)
 - e. To complete the installation, refer to the ESM: **RESTRAINTS > SEAT BELT > REMOVAL AND INSTALLATION > REAR SEAT BELT > SEAT BELT RETRACTOR > Removal and Installation**



Figure 4

9. Reconnect the positive battery terminal.
 - Positive battery terminal nut torque: 5.39 N•m (0.55 kg-m, **48 in-lb**)
10. Reconnect the negative battery terminal.
 - Negative battery terminal nut torque: 8.00 N•m (0.82 kg-m, **71 in-lb**)
11. Perform **ADDITIONAL SERVICE WHEN REMOVING BATTERY NEGATIVE TERMINAL.**
 - Refer to the ESM: **ELECTRICAL & POWER CONTROL > POWER SUPPLY, GROUND & CIRCUIT ELEMENTS > BASIC INSPECTION > INSPECTION AND ADJUSTMENT > ADDITIONAL SERVICE WHEN REMOVING BATTERY NEGATIVE TERMINAL > Required Procedure After Battery Disconnection**

PARTS INFORMATION

DESCRIPTION	PART NUMBER (1)	QUANTITY
BELT ASSY – TONGUE, PRETENS RR RH BLACK (Rear Seat Belt Service Kit)	88884-6RL8A	1 As Needed
BELT ASSY – TONGUE, PRETENS RR RH BEIGE (Rear Seat Belt Service Kit)	88884-6RR8B	1 As Needed
BELT ASSY – TONGUE, PRETENS RR LH BLACK (Rear Seat Belt Service Kit)	88885-6RR8A	1 As Needed
BELT ASSY – TONGUE, PRETENS RR LH BEIGE (Rear Seat Belt Service Kit)	88885-6RR8B	1 As Needed

- (1) These special parts cannot be found in the Electronic Parts Catalog. Please manually order the parts through Dealer Business Systems (DBS).

SERVICE KIT VISUAL REFERENCE

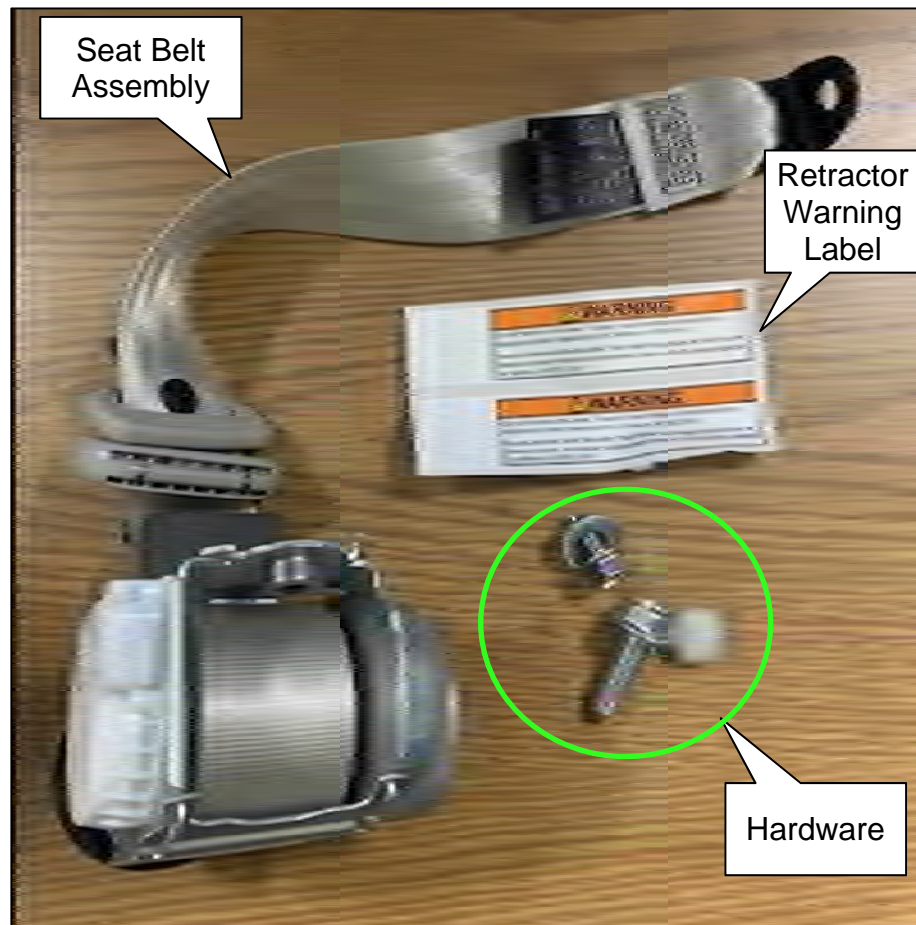


Figure 5

AMENDMENT HISTORY

PUBLISHED DATE	REFERENCE	DESCRIPTION
October 10, 2023	NTB23-005	Original bulletin published

