

McLaren Artura – Battery Charging Guide Label Addition

SENSITIVITY: Restricted

Bulletin type: Service Campaign
Reference number: N/A
Campaign reference: SCB 16 M 002
Attention: Retailer Aftersales Managers,
Retailer Service Managers, Retailer Service Advisors,
Retailer Technicians, Retailer Parts Managers
Affected vehicles: McLaren Artura
Situation: Installation of battery charging guide label
Procedure: Action affected vehicles during next Retailer visit. Please refer to the information outlined in this document to complete the required work
Date: 10 October 2023

This bulletin will cover:

-
- 1. Overview
 - 2. Parts Information
 - 3. Procedure
 - 4. Warranty Information
 - 5. Affected Vehicles
-

1. Overview

Through continuous product quality monitoring, McLaren Automotive has released a label with battery charging care points to maintain optimal battery life.

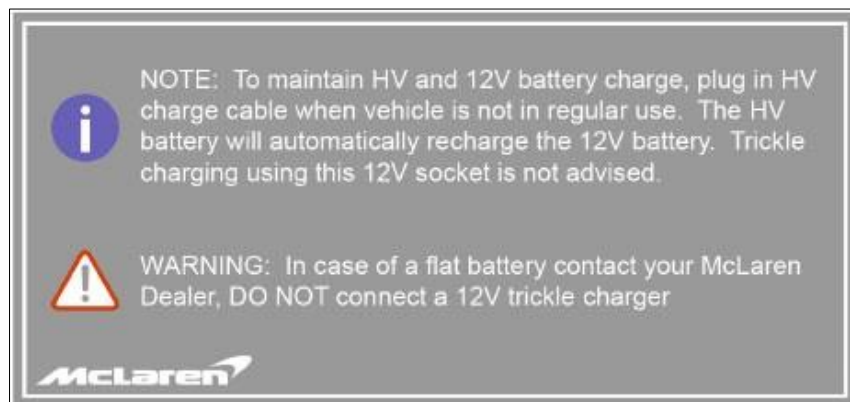


Image 1 Label example

2. Parts Information

The below parts are required to action this Service Campaign. Depending on the Region, the appropriate language label can be ordered via Unidial 2 as normal.

Part Number	Description	Quantity
16AF786CP	LABEL - 12V SOCKET TRICKLE CHARGER - ENG	1
16AF790CP	LABEL-TRICKLE CHARGER-GERMAN	1
16AF789CP	LABEL-TRICKLE CHARGER-FRENCH	1
16AF791CP	LABEL-TRICKLE CHARGER-ITALIAN	1
16AF794CP	LABEL-TRICKLE CHARGER-LATVIAN	1
16AF796CP	LABEL-TRICKLE CHARGER-PORTUGUESE	1
16AF795CP	LABEL-TRICKLE CHARGER-POLISH	1
16AF792CP	LABEL-TRICKLE CHARGER-SPANISH	1
16AF787CP	LABEL-TRICKLE CHARGER-ARABIC	1
16AF788CP	LABEL-TRICKLE CHARGER-CHINESE	1
16AF793CP	LABEL-TRICKLE CHARGER-JAPANESE	1

All orders should be placed as usual on Unidial 2, for any parts queries please contact our Parts Customer Service Team:

EMEA – mclarencustomerservice@unipart.com

APACHI – mclarencustomerserviceap@unipart.com

AMERICAS – mclarencustomerservicena@unipart.com

To support timely completion of Campaigns, please plan your parts ordering in line with your impacted Vehicle Parc. Sufficient inventory in your facility to complete your vehicle Campaigns will build customer trust and promotes customer satisfaction. In turn, we are doing everything possible to best support you with the right stock in our central facilities so we can ship your orders quickly.

3. Procedure

Follow the steps below to correctly apply the label:

Step 1

Collect appropriate language label

Step 2

Identify the label application area. The label application area is at the bottom left corner of the front luggage bin hatch cover

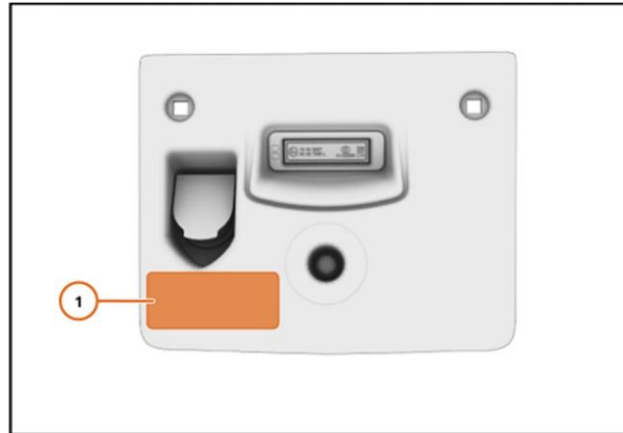


Image 2 Label application area (1)

Step 3

Prepare the highlighted area. Use Betaclean 3900 to clean the surface. Allow 90 seconds for drying

Step 4

Peel off the backing tape from the label

Step

Apply even pressure to adhere the label to the luggage bin hatch cover bottom left corner as shown above. Ensure the label is straight and with no air bubbles or creases.

4. Warranty Information

Submit a claim to the McLaren Warranty department following completion of the work, using the following details.

DESCRIPTION	REPAIR TIME
McLaren Artura – Battery Charging Guide Label	0.05 hrs

5. Affected Vehicles

Affected vehicles will be flagged in the Retailer Portal when next opening a Workshop Visit related to the vehicle. Your Regional Aftersales Manager will also contact you with a VIN list of affected vehicles.

If you have any questions, please speak to your Regional Aftersales Manager.

The information contained in McLaren bulletins is for internal use only by McLaren Authorised Retailers and must not be published on external websites or social media forums etc.

The McLaren data classification policy applies to all full time, part-time and fixed term employees of McLaren and all workers including, contractors, consultants, suppliers, and third parties who have access to McLaren data and/or systems. This policy includes all information held by, or on behalf of, McLaren in any form and all information systems/services used by, or used to store data belonging to, McLaren.

Part numbers listed in McLaren bulletins are for reference only. Always check with the parts department to verify the latest part numbers.

All bulletins (Information/Campaign/Recall) issued by McLaren Automotive Limited ("McLaren") are intended only for use by technicians who have attended McLaren technical training courses. McLaren trained technicians have the equipment, tools, safety instructions and the know how to perform the job properly and safely. McLaren bulletins are written to inform McLaren technicians of conditions that may occur on some McLaren vehicles, or to provide information that could assist diagnosing a McLaren vehicle. Part numbers listed in McLaren bulletins are for reference only. Always check with the parts department to verify the latest part numbers.