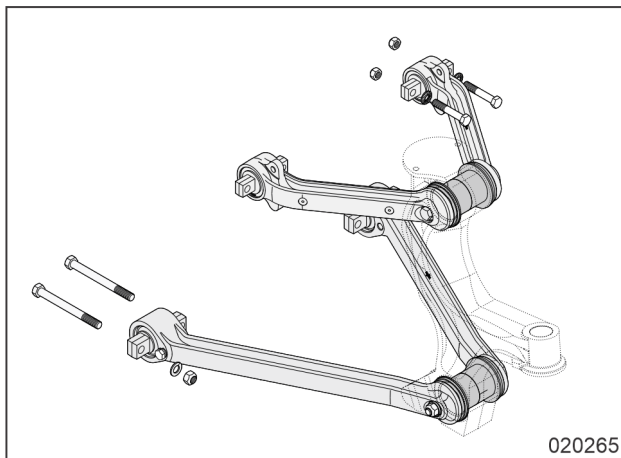


<b>ADDRESSEES</b>	: Owners and operators ABC Customer Care and Parts Source
<b>VEHICLE MODEL</b>	: All coaches with independent wheel suspension on front and tag axles
<b>MANUAL CHAPTER</b>	: 12.06 Axles – Front axle 12.14 Axles – Trailing axle
<b>BULLETIN TYPE</b>	: <b>Service information</b>
<b>DATE</b>	: November 06 <sup>th</sup> , 2023
<b>SUBJECT</b>	: <b>General information related to bolts securing wheel suspension arms to chassis</b>
<b>CONDITIONS</b>	: This service bulletin does not entitle to any reimbursement.

## INTRODUCTION

Van Hool regularly receives questions regarding the bolts securing the wheel suspension arms of the front axle and tag axles to the chassis. The purpose of this service information bulletin is to inform and is partly a reminder of what already is mentioned in the maintenance manual.



**Figure 1: Bolts securing wheel suspension arms to chassis**

## BOLT ORIENTATION

There is no requirement about the entering direction of the bolt. Important is that you install the bolt in such a way that the nut can easily be torqued. Bolt head tightening is not allowed!

## RE-USE OF SELF-LOCKING NUTS

Self-locking nuts in this application should not be loosened and retightened more than two times. After loosening a third time, throw away the nut with the corresponding screw and change by a new identical one. If removed from a screw, it should never be used again, but thrown away with the screw and changed by a new identical one.

*Continued on next page.*

## **HELP DESK:**

If there are any questions regarding this subject, please call ABC Customer Care & Parts Source toll-free for guidance on 1-877-427-7278.

## **DISCLAIMER:**

The procedures contained herein are not exclusive. Van Hool cannot possibly know, evaluate, or advise the transportation industry of all conceivable ways in which a procedure may be undertaken or of the possible consequences of each such procedure. Other procedures may be as good, or better, depending upon the particular circumstances involved. Each carrier who uses the procedures herein must first satisfy himself thoroughly that neither the safety of his employees or agents, nor the safety or usefulness of any products, will be jeopardized by any procedure selected.

## **INFORMATION HANDLING:**

Important additions and modifications regarding technical information not yet included in the manual will be communicated through Service Bulletins.

## **VAN HOOL CUSTOMER PORTAL:**

Consult the customer portal regularly for the latest service documentation. In addition to the maintenance manual, you will also find the operating manual and the spare parts catalogue of your vehicle on the customer portal. The customer portal is accessible through [www.vanhool.be](http://www.vanhool.be), but only with a code (password) from Van Hool. If you do not have a password yet, request it by using the link on the Van Hool website.