



Service Bulletin

Bulletin No.: 23-NA-179

Date: October, 2023

TECHNICAL

Subject: Loose B-Pillar Applique

Brand:	Model:	Model Year:		Build Date:		Engine:	Transmission:
		from	to	from	to		
Buick	Envista	2024	2024	SOP	September 27, 2023	—	—

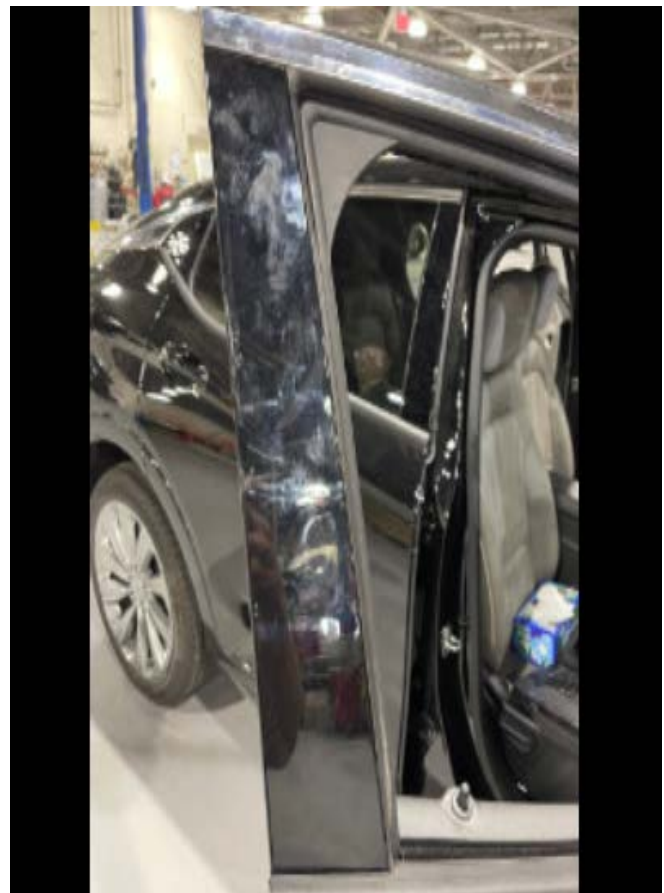
Involved Region or Country	North America
Condition	Some customers may comment on loose trim at the B-pillar applique.
Cause	The cause of the condition may be that the adhesive tape may loosen over time.
Correction	Inspect all four appliques. If they are loose, damaged, bowing or bending, then replace the adhesive tape of the applique.

Service Procedure

Important: Service agents must comply with all International, Federal, State, Provincial, and/or Local laws applicable to the activities it performs under this bulletin, including but not limited to handling, deploying, preparing, classifying, packaging, marking, labeling, and shipping dangerous goods. In the event of a conflict between the procedures set forth in this bulletin and the laws that apply to your dealership, you must follow those applicable laws.

Front Door B-Pillar Rear Applique

Refer to *Front Side Door Window Frame Rear Applique and Outer Weatherstrip Replacement* in SI as an additional guide.



6450837

1. Lower the front side door window to the full down position.



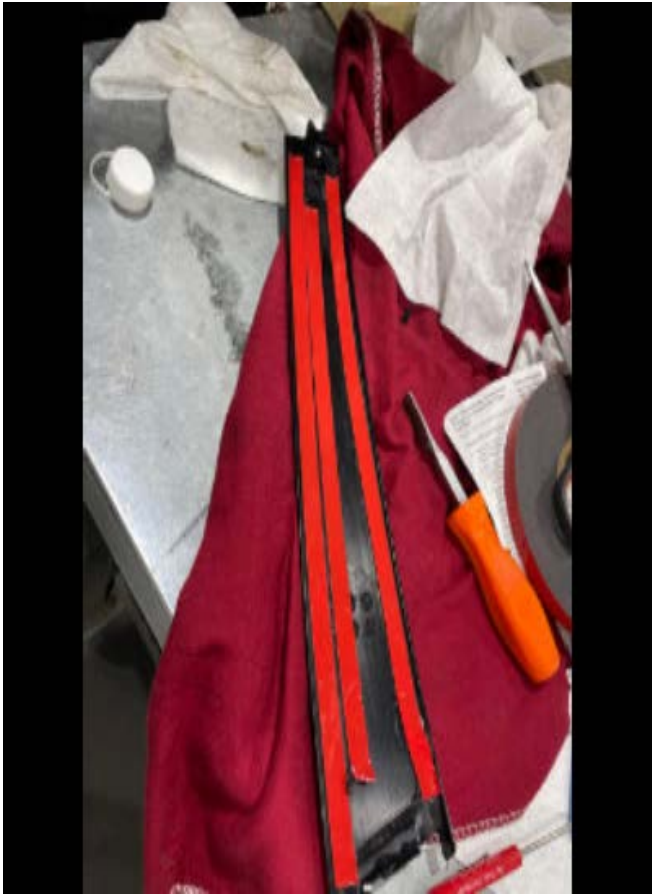
6450839

2. Partially remove the weatherstrip at the upper and lower applique bolts and retainers.
3. Remove both the upper and lower applique bolts.



6450840

4. Lift up the end of the window belt reveal molding closest to the rear applique.



6450848

7. Apply three double-sided adhesive tape along the length of the applique leaving one side of the tape covered.



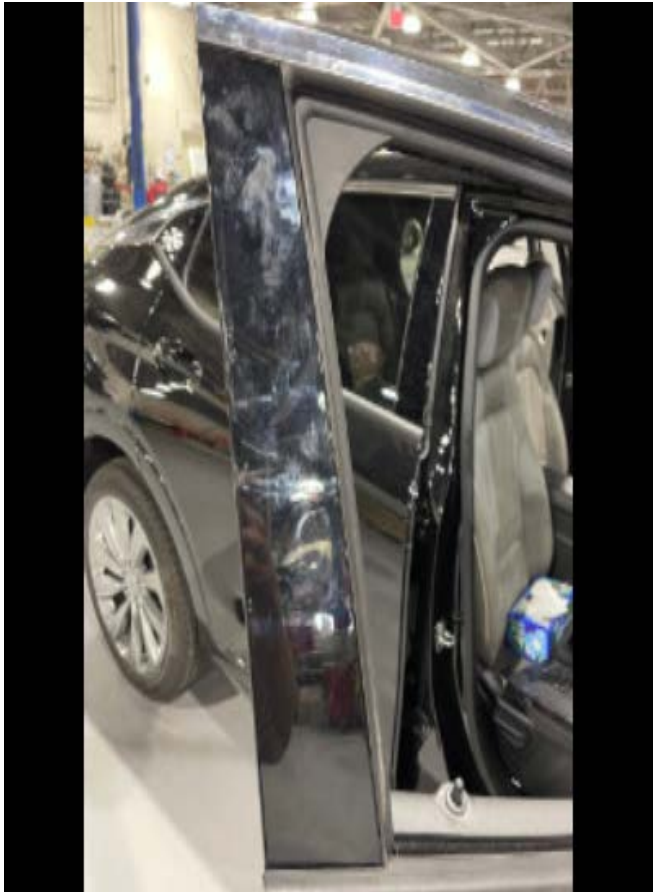
6450842

Note: There is a lifted ridge on the frame of the door. Use that as the middle line of tape.

Note:

- Heating: Preheating the product helps secure adhesion at 15°C (59°F) or lower.
- Pressurizing by hand along the adhesive tape line so that the area of use of the tape is 90% or more in contact with the vehicle surface (at least 60N).

8. Position the rear applique panel properly on the door frame, remove the tape cover and secure the applique panel on the door frame.



6450837

9. Reattach the upper and lower applique bolts, re-secure window belt reveal molding, then the window weatherstrip.

Rear Door B-Pillar Front Applique

Refer to *Rear Side Door Window Frame Front Applique and Front Channel Replacement* in SI as an additional guide.

1. Lower the rear side door window to the full down position.
2. Partially remove the weatherstrip at the upper and lower applique bolts.

Version	1
Modified	Released October 13, 2023

3. Remove the upper and lower applique bolts.
4. Remove the rear side door window belt reveal molding.
5. Remove the front applique.
6. Remove the existing adhesive tape from the front applique. Then remove any residual adhesive from the applique or the door.
7. Apply three double-sided strips of tape along the length of the applique panel leaving one side covered.

Note: There is a lifted ridge on the frame of the door. Use that as the middle line of tape.

8. Position the front applique properly on the door frame, remove the tape cover and secure the applique panel on the door frame.
9. Reattach the upper and lower applique bolts, re-secure the window belt reveal molding, then the window weatherstrip.

Warranty Information

For vehicles repaired under the Bumper-to-Bumper coverage (Canada Base Warranty coverage), use the following labor operation. Reference the Applicable Warranties section of Investigate Vehicle History (IVH) for coverage information.

Labor Operation	Description	Labor Time
1086738*	Add Double-Sided Tape to Pillar Applique Panel	0.5 hr
Add	Add Double-Sided Tape to Pillar Applique Panel	0.5 hr
Add	Add Double-Sided Tape to Pillar Applique Panel	0.5 hr
Add	Add Double-Sided Tape to Pillar Applique Panel	0.5 hr

*This is a unique Labor Operation for bulletin use only.

