



## Technical Service Bulletin

<b>GROUP</b>	<b>NUMBER</b>
<b>CAMPAIGN</b>	<b>23-01-082G</b>
<b>DATE</b>	<b>MODEL(S)</b>
<b>OCTOBER 2023</b>	<b>G80 ELECTRIFIED (RG3 EV) GV60 (JW1 EV) GV70 ELECTRIFIED (JK1a EV)</b>

**SUBJECT:** VCU UPDATE FOR REGENERATIVE BRAKE LIGHT LOGIC (SERVICE CAMPAIGN 908G)

### \* IMPORTANT

Dealers must perform this service campaign on all affected vehicles prior to customer retail delivery and whenever an affected vehicle is in the shop for any maintenance or repair.

Access the "Vehicle Information" screen via WEBDCS to identify open campaigns.

**Description:** This updated Vehicle Control Unit (VCU) software package includes the following:

- Brake light logic update for regenerative braking.
- i-Pedal mode operation logic update.
- 12V battery saver logic update allows charging from EV Battery as low as 10% SOC when parked.

### Applicable Vehicles (Certain):

- 2023MY G80 Electrified (RG3 EV) produced from 02/23/2023 – 09/04/2023
- 2023-24MY GV60 (JW1 EV) produced from 02/04/2022 - 09/12/2023
- 2023MY GV70 Electrified (JK1a EV) produced from 01/25/2023 - 06/14/2023

### NOTICE

This service campaign can only be performed by EV certified Genesis retailers.

### GDS Information:

System	Event #	Description
VCU	1013*	RG3 EV VCU UPDATE FOR REGENERATIVE BRAKE NON-LIGHT
	1021*	JW1 EV 23MY VCU UPDATE FOR REGENERATIVE BRAKE NON-LIGHT
	1035*	JW1 EV 24MY VCU UPDATE FOR REGENERATIVE BRAKE NON-LIGHT
	1012*	JK(a) EV VCU UPDATE FOR REGENERATIVE BRAKE NON-LIGHT

(\*or use a later available event as listed in the GDS VCU Update screen if one is available.)

**Warranty Information:**

Model	Op. Code	Operation	Op. Time	Causal Part	Nature Code	Cause Code
ALL	30D090R0	VCU UPGRADE	0.7 M/H	39751-1XRN1 (G80) 39751-1XKN1 (GV70) 39751-1XJN5 (GV60)	114	ZZ3

**NOTE 1:** Submit claim on Claim Entry Screen as “Campaign” type.

**NOTE 2:** If a part is found in need of replacement while performing this campaign and the affected part is still under warranty, submit a separate claim using the same repair order. If the affected part is out of warranty, submit a Prior Approval request for goodwill consideration prior to performing work.

**NOTE 3:** This TSB includes Repair validation photos. Op times include VIN, Mileage, and repair validation photos, as outlined in the Digital Documentation Policy.

**Service Procedure:**

**STUI**



This TSB includes Repair validation photos. Refer to the latest Warranty Digital Documentation Policy for requirements.

**NOTICE**

**You must initially perform the GDS ECU Update in Auto Mode.**

- If the ECU Update starts but then fails in Auto Mode, perform the update in Manual Mode to recover.

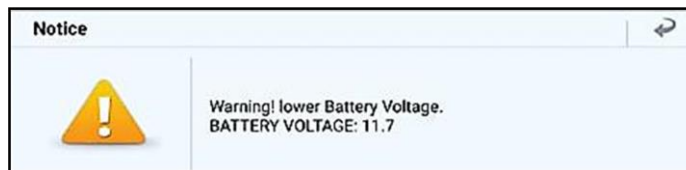
**WARNING**

**In Stock Vehicles:** Turn OFF Shipping Mode to prevent vehicle automatic shutdown that may result in an update failure.

**NOTICE**

**GDS Vehicle Battery Low Voltage Warning:**

The VCU Update is a long ECU Update. If voltage is below 12 volts as per the below GDS warning, then select **Back** and run the vehicle for at least 30 minutes to ensure an adequate battery state of charge for reliable update results. Turn ignition back on, and then retry the ECU update again.



B1. Perform the ECU Update in Auto Mode.

Use the Auto Mode ID Check to verify the ECU ROM ID before updating the software.

**i Information**

Refer to TSB 15-GI-001 for additional tablet-based Mobile GDS ECU update information.

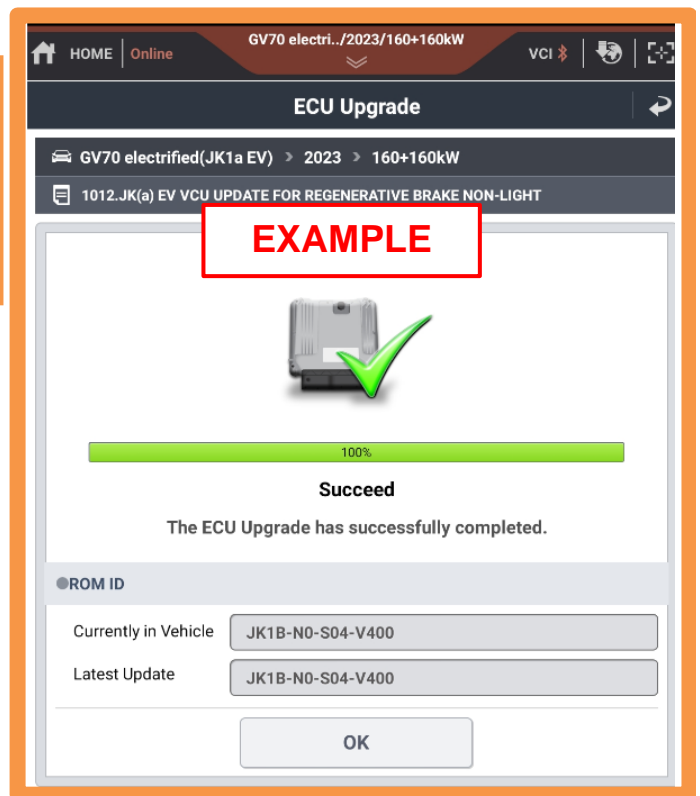


B2.

**STUI**



Take a screenshot of the ECU Update Complete screen using your particular tablet's screenshot save method and upload to STUI.



- B3. After the ECU Upgrade process shows 100% complete, cycle the ignition key to OFF for at least 10 seconds to reset the control unit.
- B4. Perform an “All Systems Fault” Code search and erase the history of the DTC that had incidentally occurred from the ECU update.
- B5. Start the vehicle in **Ready** mode to confirm proper operation of the vehicle.

**ROM ID Information Table: Event #1013.**

Model	System	ECU Part Number	ROM ID	
			OLD	NEW
RG3 EV	VCU	39751-1XRN1	RG3A-N0-SB1-V400	RG3A-N0-SB5-V400
			RG3A-N0-SB2-V400	
			RG3A-N0-SB3-V400	
			RG3A-N0-SB4-V400	

**ROM ID Information Table: Event #1021 (2023MY) and Event #1035 (2024MY).**

Model	System	ECU Part Number	ROM ID	
			OLD	NEW
2023MY JW1 EV	VCU	39751-1XJN1	397511XJN1_NSB3	397511XJN1_NSB7
			397511XJN1_NSB4	
			397511XJN1_NSB5	
			397511XJN1_NSB6	
2024MY JW1 EV		39751-1XJN5	JW1M-44E-N30-S00	JW1M-44E-N30-S03
			JW1M-44E-N30-S01	

**ROM ID Information Table: Event #1012.**

Model	System	ECU Part Number	ROM ID	
			OLD	NEW
JK1(a) EV	VCU	39751-1XKN1	JK1B-N0-S00-V400	JK1B-N0-S04-V400
			JK1B-N0-S01-V400	
			JK1B-N0-S02-V400	
			JK1B-N0-S03-V400	

**Manual Mode Passwords:**

Event	ECM Menu	Password
1013	RG3 EV VCU 39751-1XRN1	4751
1021	JW1 EV 23MY VCU 39751-1XJN1	7400
1035	JW1 EV 24MY VCU 39751-1XJN5	3003
1012	JK(a) EV VCU 39751-1XKN1	3751