

Excessive Resistance of Door Side Windows When Being Raised/Lowered, Cracking and/or Squeaking Noises

Topic number	LI72.00-P-072603
Version	4
Function group	72.00 - General
Date	10/24/23
Validity	MODEL 167 as of production date: September 2019 to production date: All 167 front doors at left and right: April 22 2021 MODEL 167.1 rear doors at left and right: May 25 2021 MODEL 167.3 rear doors at left and right: June 4 2021 MODEL 167.9 rear doors at left and right: June 16 2021
Reason for change	Note "Repair package available" in "Operation number/damage code" tab added

Complaint

Excessive resistance of door side windows when being raised/lowered, cracking and/or squeaking noises.

Cause

Sealing lip of inner sealing rail, see Picture 1 and Picture 2, pos. 90, folds down while side windows are being lowered (opened).

When the side windows are raised (closed), the sealing lip is pulled back up again.

Attachments	
File	Description
Bild 1.JPG	

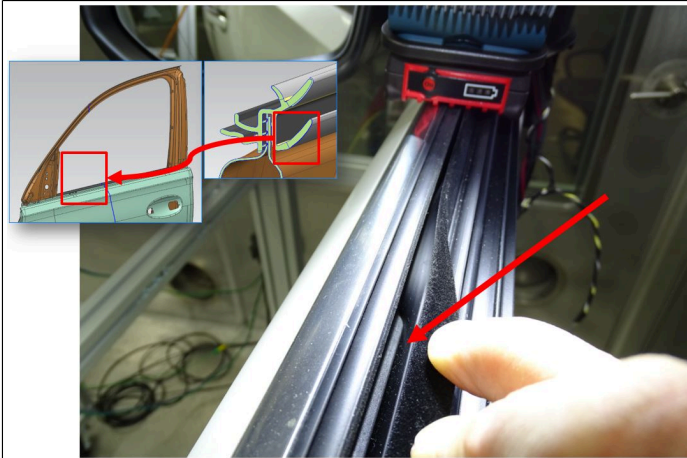
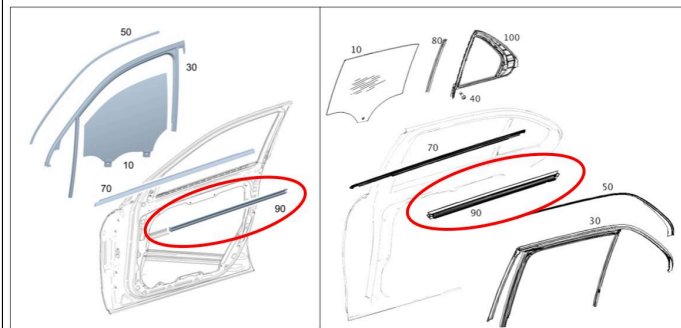


Bild 2.JPG



Remedy

Replace inner sealing rail.

Then perform normalization of the window lifter system in the relevant door control unit.

Note:

For this complaint, no other surrounding component parts, such as outer sealing rails, Picture 1 and Picture 2, pos. 70, window lifter components or door control units, must be replaced or flashed.

Please note the following:

If the problem on a vehicle occurs outside the valid production date, please create a TIPS case with the following contents:

1. Make a video of the problem of the inside of the door in the area of the inner sealing rail, and pull the upper lip of the inner sealing rail to one side while doing so and check to see if the lower lip is folded over, for example, see picture 1.
2. Details on environmental conditions in a problem case (temperature, dry or wet)
3. Pictures of inner sealing rail when removed:
 - Both mounting face lips towards the glass
 - Any visible damage on the inner sealing rail

XENTRY Tips

WIS-References		
Document number	Title	Note
AR72.12-P-0001ME	Remove/install sealing for side window on rear door.	Step 2

Symptoms
Body > Glazing > Window lifting mechanism/window operation > Remains stationary
Body > Glazing > Window lifting mechanism/window operation > Does not run up
Body > Glazing > Window lifting mechanism/window operation > Does not run down
Body > Glazing > Window lifting mechanism/window operation > Stiff/sluggish
Body > Glazing > Window lifting mechanism/window operation > Noise
Body > Glazing > Side window > Noise

Parts						
Part number	ES1	ES2	Designation	Quantity	Note	EPC
A 167 735 63 00			Inner left rear sealing rail	1	Valid for 167.9 with code 297	X
A 167 735 91 00			Inner left rear sealing rail	1		X
A 167 735 92 00			Inner right sealing rail	1		X
A 167 725 17 00			Left Front Sealing Rail	1	Valid for ALL MODEL 167	X
A 167 725 18 00			Right Front Sealing Rail	1	Valid for ALL MODEL 167	X
A 167 735 39 01			Inner left sealing rail	1	Valid for MODEL 167.1	X
A 167 735 40 01			Inner right sealing rail	1	Valid for MODEL 167.1	X
A 167 735 61 01			Inner left sealing rail	1	Valid for MODEL 167.1 with code 297	X
A 167 735 62 01			Inner right sealing rail	1	Valid for MODEL 167.1 with code 297	X
A 167 735 63 01			Inner left sealing rail	1	Valid for MODEL 167.9 with code 297	X
A 167 735 64 00			Inner right sealing rail	1	Valid for MODEL 167.9	X
A 167 735 64 01			Inner right sealing rail	1	Valid for MODEL 167.9 with code 297	X

Operation numbers/damage codes				
Op. no.	Operation text	Time	Damage code	Note