

<b>Subject:</b>  PUSH BUTTON START MALFUNCTION HAVE THE VEHICLE INSPECTED WARNING MESSAGE AND DTC C0040:24 / P0504:00	<b>Service Alert No.:</b> SA-062/23
	<b>Last Issued :</b> 10/16/2023

## BULLETIN NOTES

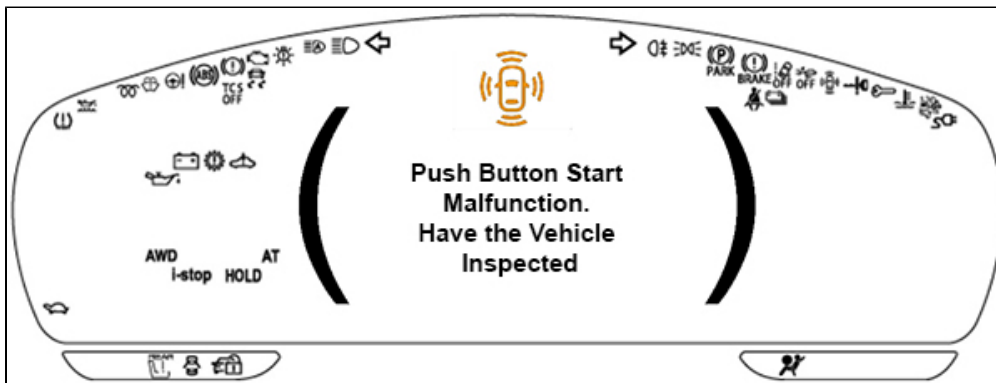
### APPLICABLE MODEL(S)/VINS

2024 CX-90 (KK)

### DESCRIPTION

Some customers may experience a "Push Button Start Malfunction. Have the Vehicle Inspected" warning message and the following DTC(s) may be stored.

- C0040:24 - Brake switch (No.1 signal) circuit malfunction
- P0504:00 - Brake switch system: Circuit malfunction



Mazda is aware of this concern and is currently working on a final repair. In the meantime, a temporary repair is available to address customer concerns. This Service Alert will be revised when a final repair becomes available.

Customers having this concern should have their vehicle repaired using the following temporary repair procedure.

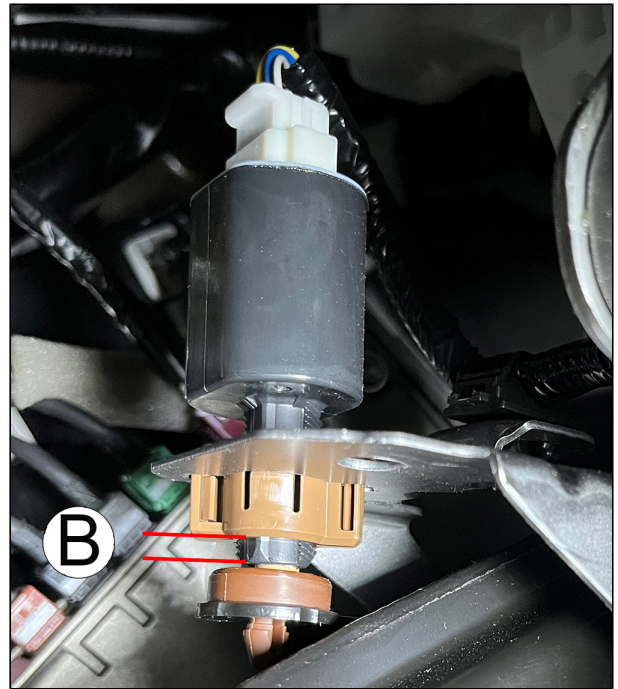
**CONSUMER NOTICE:** The information and instructions in this bulletin are intended for use by skilled technicians. Mazda technicians utilize the proper tools/ equipment and take training to correctly and safely maintain Mazda vehicles. These instructions should not be performed by "do-it-yourselfers." Customers should not assume this bulletin applies to their vehicle or that their vehicle will develop the described concern. To determine if the information applies, customers should contact their nearest authorized Mazda dealership. Mazda North American Operations reserves the right to alter the specifications and contents of this bulletin without obligation or advance notice. All rights reserved. No part of this bulletin may be reproduced in any form or by any means, electronic or mechanical---including photocopying and recording and the use of any kind of information storage and retrieval system ---without permission in writing.

**REPAIR PROCEDURE**

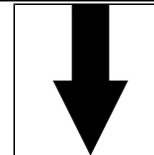
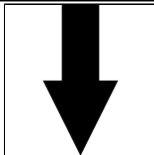
1. Verify customer concern.
2. Inspect brake switch and count adjustment notches as shown below:



(A) 2 notches



(B) 3 notches



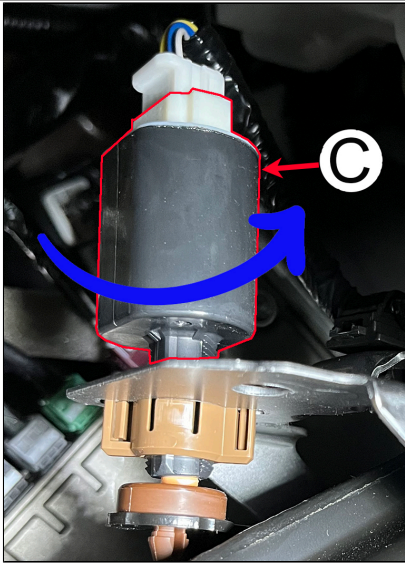
If set to 2 notches (A), adjust to 3 notches (B).

If set to 3 notches (B), adjust to 2 notches (A).

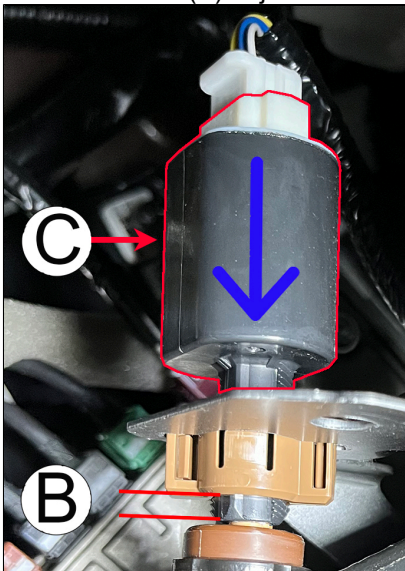
- 3a. Brake switch Adjustment:
- a. Unlock the brake switch by turning the housing (C) counterclockwise.

- 3b. Brake switch Adjustment:
- a. Unlock the brake switch by turning the housing (C) counterclockwise.

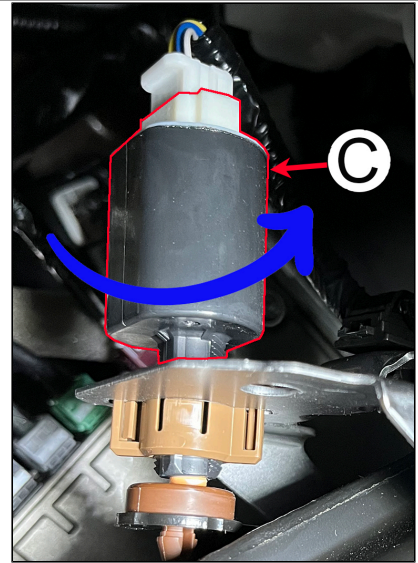
**CONSUMER NOTICE:** The information and instructions in this bulletin are intended for use by skilled technicians. Mazda technicians utilize the proper tools/ equipment and take training to correctly and safely maintain Mazda vehicles. These instructions should not be performed by "do-it-yourselfers." Customers should not assume this bulletin applies to their vehicle or that their vehicle will develop the described concern. To determine if the information applies, customers should contact their nearest authorized Mazda dealership. Mazda North American Operations reserves the right to alter the specifications and contents of this bulletin without obligation or advance notice. All rights reserved. No part of this bulletin may be reproduced in any form or by any means, electronic or mechanical--including photocopying and recording and the use of any kind of information storage and retrieval system ---without permission in writing.



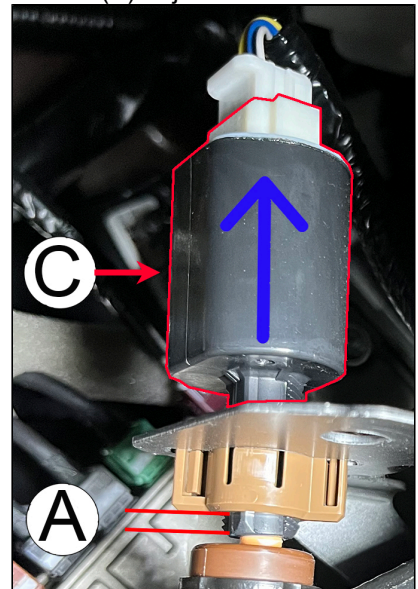
b. Slide the brake switch housing (C) down to achieve the new 3 notch (B) adjustment.



c. Lock the brake switch by turning the housing (C) clockwise.

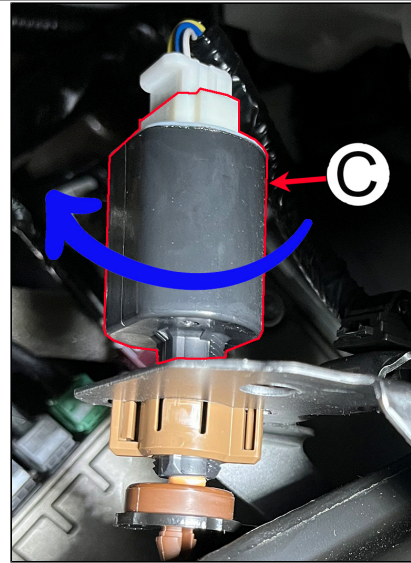
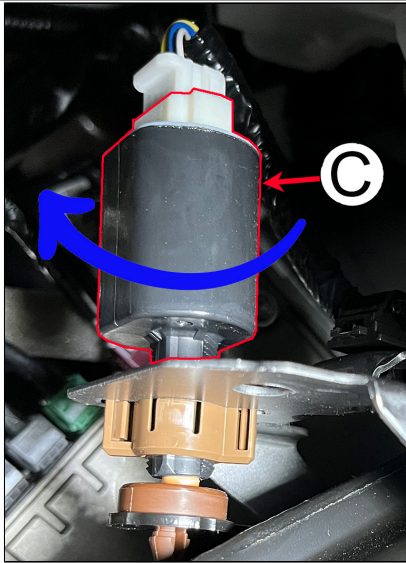


b. Slide the brake switch housing (C) up to achieve the new 2 notch (A) adjustment.



c. Lock the brake switch by turning the housing (C) clockwise.

**CONSUMER NOTICE:** The information and instructions in this bulletin are intended for use by skilled technicians. Mazda technicians utilize the proper tools/ equipment and take training to correctly and safely maintain Mazda vehicles. These instructions should not be performed by "do-it-yourselfers." Customers should not assume this bulletin applies to their vehicle or that their vehicle will develop the described concern. To determine if the information applies, customers should contact their nearest authorized Mazda dealership. Mazda North American Operations reserves the right to alter the specifications and contents of this bulletin without obligation or advance notice. All rights reserved. No part of this bulletin may be reproduced in any form or by any means, electronic or mechanical---including photocopying and recording and the use of any kind of information storage and retrieval system ---without permission in writing.



4. Clear DTC's.

5. Verify the repair.

**WARRANTY INFORMATION**

Warranty Type	A
Symptom Code	6X
Damage Code	9W
Part Number Main Cause	KAAA-66-490
Quantity	0
Operation Number / Labor Hours:	P0302XRT/0.3 Hrs.

**CONSUMER NOTICE:** The information and instructions in this bulletin are intended for use by skilled technicians. Mazda technicians utilize the proper tools/ equipment and take training to correctly and safely maintain Mazda vehicles. These instructions should not be performed by "do-it-yourselfers." Customers should not assume this bulletin applies to their vehicle or that their vehicle will develop the described concern. To determine if the information applies, customers should contact their nearest authorized Mazda dealership. Mazda North American Operations reserves the right to alter the specifications and contents of this bulletin without obligation or advance notice. All rights reserved. No part of this bulletin may be reproduced in any form or by any means, electronic or mechanical---including photocopying and recording and the use of any kind of information storage and retrieval system ---without permission in writing.