



## STAR ONLINE PUBLICATION



**Case Number: S2321000005 REV. A**

**Release Date: September 2023**

**Symptom/Vehicle Issue:** Transmission Fluid Leak From Under The Vehicle.

**Discussion:** Some customers may notice a fluid leak underneath the vehicle. Upon further investigation, it may be found that it appears to be leaking from the transmission pan and/or pan gasket. However, reports indicate that the fluid leak may be from other areas of the transmission.

If the technician is working on a vehicle with a transmission fluid leak, refer to the following Potential Leak Points and Repair Procedure below prior to replacing the transmission pan and/or pan gasket. These potential leak points can leak fluid down onto the transmission/transmission pan sealing flange and be easily mistaken for a pan and/or pan gasket leak.

### **Potential Leak Points:**

1. The first Potential leak point is at the Transmission Oil Cooler (TOC) connections. Please see callouts 1-4 in ([Figure 1](#)).

This document does not authorize warranty repairs. This communication documents a record of past experiences. STAR Online does not provide any conclusions about what is wrong with the vehicle. Rather, it captures all previous cases known that appear to be similar or related to the vehicle symptom / condition. You are the expert, and you are responsible for deciding on the appropriate course of action.

**Contact STAR Center, or your Technical Assistance Center Via TechConnect, eCONTACT or Service Library entry if no solution is found.**



## STAR ONLINE PUBLICATION

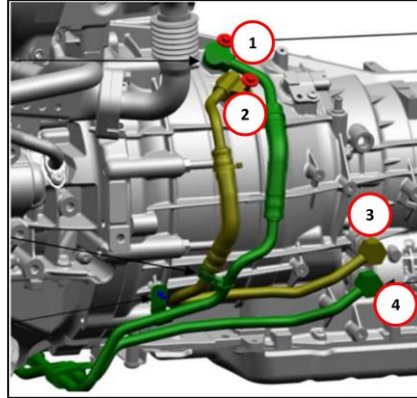


Figure 1

- a. Closely inspect all TOC line retaining bolts for proper torque. Please see (Figure 2).



Figure 2

- b. Closely inspect the TOC line seals (Figure 3) for damage and replace as necessary. Tighten the retaining bolts to the proper torque, clean the affected area, and retest for the leak.

This document does not authorize warranty repairs. This communication documents a record of past experiences. STAR Online does not provide any conclusions about what is wrong with the vehicle. Rather, it captures all previous cases known that appear to be similar or related to the vehicle symptom / condition. You are the expert, and you are responsible for deciding on the appropriate course of action.

**Contact STAR Center, or your Technical Assistance Center Via TechConnect, eCONTACT or Service Library entry if no solution is found.**



## STAR ONLINE PUBLICATION



Figure 3

2. The second potential leak point is due to possible case porosity near the TOC line connections.
  - a. Closely inspect the transmission case near the rear TOC line connections on the side of the transmission, (Figure 4), for signs of porosity.

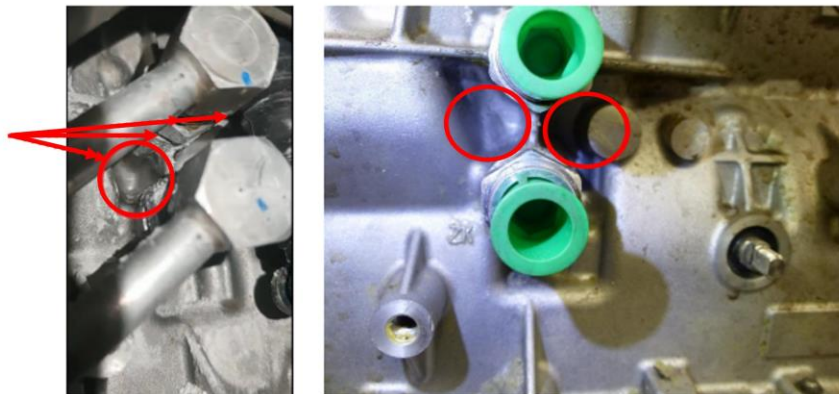


Figure 4

This document does not authorize warranty repairs. This communication documents a record of past experiences. STAR Online does not provide any conclusions about what is wrong with the vehicle. Rather, it captures all previous cases known that appear to be similar or related to the vehicle symptom / condition. You are the expert, and you are responsible for deciding on the appropriate course of action.

**Contact STAR Center, or your Technical Assistance Center Via TechConnect, eCONTACT or Service Library entry if no solution is found.**



## STAR ONLINE PUBLICATION



### Repair Procedure:

1. Referring the potential leak points above, thoroughly clean each area using brake parts cleaner.
2. Apply suitable leak detection powder to the affected areas.
3. Start and run the vehicle on a suitable hoist until the vehicle reaches full operating temperature. If the leak cannot be duplicated on the hoist, take the vehicle on a thorough test drive to duplicate it.
4. Inspect the potential leak points for signs of the leak. If necessary, use a UV Blacklight to locate the leak.
5. Repair any leaks found as necessary. Leaks due to case porosity, will require transmission replacement.

This document does not authorize warranty repairs. This communication documents a record of past experiences. STAR Online does not provide any conclusions about what is wrong with the vehicle. Rather, it captures all previous cases known that appear to be similar or related to the vehicle symptom / condition. You are the expert, and you are responsible for deciding on the appropriate course of action.

**Contact STAR Center, or your Technical Assistance Center Via TechConnect, eCONTACT or Service Library entry if no solution is found.**