



GROUP	MODEL
ENG	2023MY Rio (SC) w/ 1.6L MPI Gamma
NUMBER	DATE
249	October 2023

TECHNICAL SERVICE BULLETIN

SUBJECT: SERVICE ACTION: ENGINE OIL RESET LIGHT LOGIC IMPROVEMENT (SA548)

This bulletin provides the procedure to update the software logic of the engine system on some 2023MY Rio (SC) vehicles produced from September 30, 2022 through August 31, 2023. After resetting the engine oil reset light in the affected vehicles, the light may reappear once the vehicle has been shut off and restarted. Follow the procedure outlined in this publication to apply the improved logic to the 'Engine' system using the KDS ECU Upgrade function as described in this bulletin. For confirmation that the latest reflash has been applied to a vehicle you are working on, verify the ROM ID using the table on page 3 of this bulletin. Before conducting the procedure, verify that the vehicle is included in the list of affected VINs.



NOTICE

A Service Action is a repair program without customer notification that is performed during the warranty period. Any dealer requesting to perform this repair outside the warranty period will require DPSM approval.

Repair status for a VIN is provided on KDealer+ (Service → Warranty Coverage → Warranty Coverage Inquiry → Campaign Information). Not completed Recall / Service Action reports are available on KDealer+ (Consumer Affairs → Not Completed Recall → Recall VIN → Select Report), which includes a list of affected vehicles.

This issue number is SA548.

ECU Upgrade Procedure:

To correct this condition, the ECU should be reprogrammed using the KDS download, as described in this bulletin.

Upgrade Event Name

701.SC PE Gamma 1.6MPI engine oil service reset logic improvement

NOTICE

- Confirm a fully charged battery (12.3 volts or higher is necessary) is used or utilize a fully charged jump starter box connected to the battery.
- **Ensure the KDS GDS is sufficiently charged at 60% or higher prior to reflash.**
- All ECU upgrades must be performed with the ignition set to the 'ON' position unless otherwise stated.
- **Damaged VCI II units should not be used and promptly replaced.**
- Be careful not to disconnect the VCI-II connected to the vehicle during the ECU upgrade procedure.
- **DO NOT start the engine during ECU upgrade.**
- DO NOT turn the ignition key 'OFF' or interrupt the power supply during ECU upgrade.
- **When the ECU upgrade is completed, turn the ignition 'OFF' and wait 10 seconds before starting the engine.**
- ONLY use approved ECU upgrade software designated for the correct application.


IMPORTANT

It is recommended to ALWAYS check the Electronic Parts Catalog (EPC) to locate the ECU Part Number respective to Auto/Manual Mode ROM IDs. DO NOT reference the parts label affixed to the ECU.

SUBJECT:

ENGINE OIL RESET LIGHT LOGIC IMPROVEMENT (SA548)

NOTICE

Before attempting an ECU upgrade on any Kia model, make sure to first determine whether the applicable model is equipped with an immobilizer  security system. Failure to follow proper procedures may cause the PCM to become inoperative after the upgrade and any claims associated with this repair may be subject to chargeback.

ROM ID INFORMATION TABLE:

Upgrade Event #701

Engine	System	Transmission	ECU P/No.	ROM ID	
				Previous	New
1.6L MPI Gamma	Engine	CVT	39100 2M051	MSCE3NU06Q000T03 MSCE3NU06Q100T03	MSCE3NU06Q200T03

To verify the vehicle is affected, be sure to check the Calibration Identification of the vehicle's ECM ROM ID and reference the Information Table as necessary.



NOTICE

Prior to performing the ECU upgrade, be sure to check that the KDS is fully charged.

1. Connect the VCI-II to the OBD-II connector, located under the driver's side of the instrument panel.

NOTICE

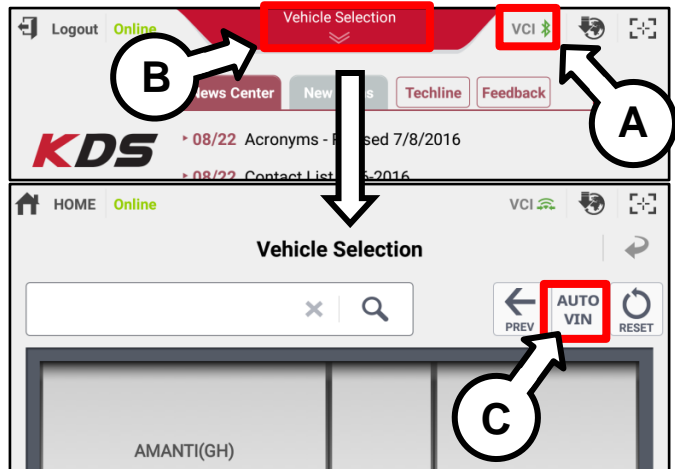
The ECU upgrade function on KDS operates wirelessly. It is not necessary to perform the upgrade via USB cable.



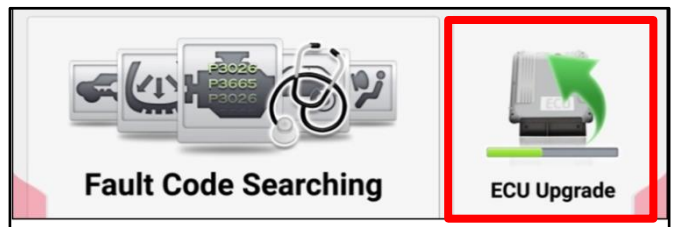
2. With the ignition ON, turn ON the KDS tablet. Select 'KDS' from the home screen.



3. Confirm communication with VCI (A) and then configure the vehicle (B) using the 'AUTO VIN' (C) feature.



4. Select 'ECU Upgrade'.



SUBJECT: ENGINE OIL RESET LIGHT LOGIC IMPROVEMENT (SA548)

- The KDS will check the server for recently uploaded Events and then automatically download Upgrade Event #701.

NOTICE
 The vehicle must be identified in Vehicle Selection to download an Event for that vehicle.

After the download is complete, the program will shut down to install. Please wait until the program restarts.

Event	Status
271.QF 2.4GDI DTC P0171,P0420 LOGIC IMPROVEMENT	Downloading
273.TF 2.4GDI DTC P0171,P0420 LOGIC IMPROVEMENT	Ready

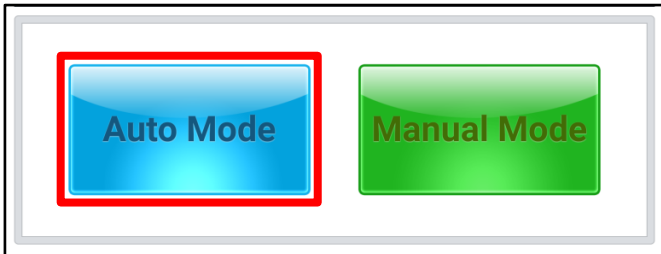
36%

Do not touch any system buttons while performing this function.

KDS screenshot shown above is for demonstration purposes only. Events shown in screenshot are not applicable to this bulletin.

- Select Auto Mode.

CAUTION
 Do NOT attempt to perform a Manual Mode upgrade UNLESS Auto Mode fails. Always follow the instructions given on the KDS in either Auto or Manual mode.



- Select the 'Engine' system under the System selection menu.

Touch ID Check (D) and confirm that the latest update is available (if applicable)

Select Upgrade Event #701 and select Upgrade to continue.

- The ECU upgrade will begin, and the progress of the upgrade will appear on the bar graph. Upgrade part (1/2) (E) will download the upgrade event to the VCI-II. Upgrade part (2/2) (F) will upgrade the ECU.

CAUTION
 Do not touch the system buttons (like 'Back', 'Home', 'etc.') while performing ECU Upgrade.

E

23%

ECU Upgrading...(1/2)

ECU is in the process of being upgraded. Please wait a few minute.

F

6%

ECU Upgrading...(2/2)

ECU is in the process of being upgraded. Please wait a few minute.

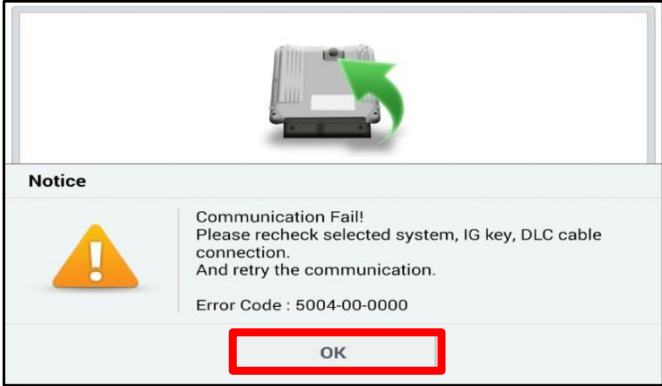


SUBJECT: **ENGINE OIL RESET LIGHT LOGIC IMPROVEMENT (SA548)**

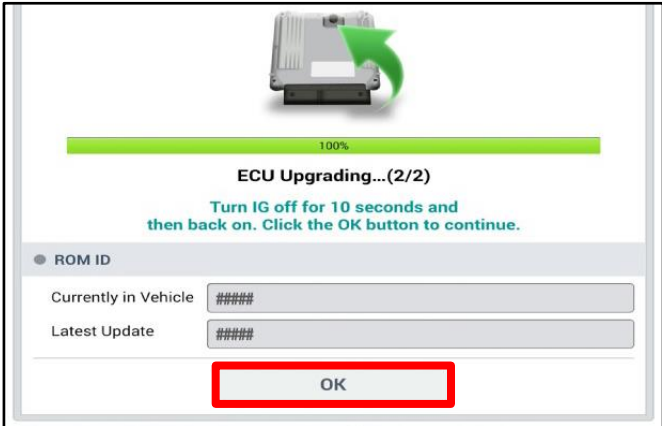
- If a "Communication Fail" screen appears, verify that the VCI-II and KDS are communicating properly. Select 'OK' and restart the from step 4.

NOTICE

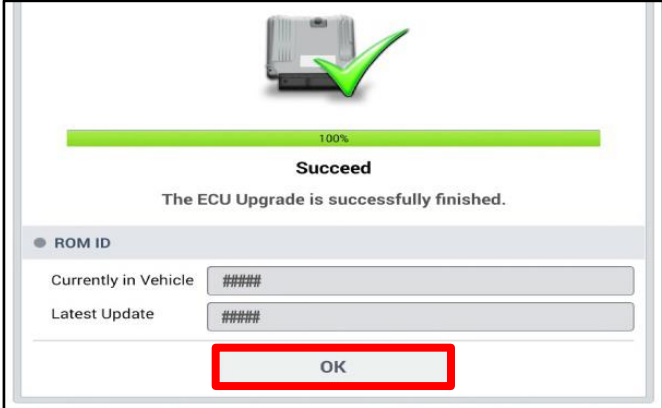
If an error notice continues to appear or if the upgrade cannot be performed, DO NOT disconnect the KDS/VCI-II. Contact GIT America Help Desk at (888) 542-4371 or Techline.



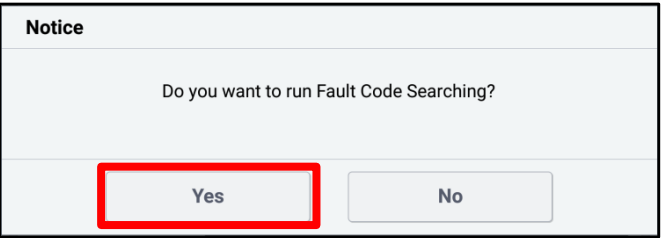
- When instructed on the KDS, turn the ignition OFF for ten (10) seconds then back on. Select 'OK' to continue.



- Once the upgrade is complete, select 'OK' to finalize the procedure.



- When prompted, select 'YES' to check for Diagnostic Trouble Codes (DTC) and erase any DTCs stored such as EPS, ESC, and TPMS that may have been set during the upgrade.



- Start the engine to confirm normal operation of the vehicle.



Manual Upgrade Procedure:

 NOTICE

The manual upgrade should **ONLY** be performed if the automatic upgrade fails.

If the automatic upgrade fails, turn the ignition 'OFF' for about 10 seconds then place it back in the 'ON' position to reset the control unit BEFORE performing manual upgrade.

See table below for 'Manual Mode' passwords.

Manual Mode ECU Upgrade Passwords

Menu	Password
SC PE Gamma 1.6MPI CVT : 39100-2M051	1251

1. Within the ECU Upgrade screen displayed, select **Manual Mode**.
2. Select the **Engine** system under the System selection menu. Select **Upgrade Event #701** and select **Upgrade** to continue.
3. Select the appropriate control unit part number with reference to the ROM ID Information Table on page 3, and select **OK**.
4. Enter the appropriate password from the Manual Mode password table above and select **OK**.
5. The upgrade will begin and the progress of the upgrade will appear on the bar graph.
6. When instructed on the KDS, turn the ignition **OFF** for ten (10) seconds then back on. Select **OK**.
7. Once the upgrade is complete, select **OK** to finalize the procedure.
8. When prompted, select **YES** to check for Diagnostic Trouble Codes (DTC) and erase any DTCs stored such as EPS, ESC, and TPMS that may have been set during the upgrade.
9. Start the engine to confirm proper operation of the vehicle.

SUBJECT:

ENGINE OIL RESET LIGHT LOGIC IMPROVEMENT (SA548)**AFFECTED VEHICLE RANGE:**

Model	Production Date Range
Rio (SC)	September 30, 2022 to August 31, 2023

REQUIRED TOOL:

Tool Name	Figure	Comments
KDS		Kia Diagnostic System

WARRANTY INFORMATION:**N Code: N99 C Code: C99**

Claim Type	Causal P/N	Qty.	Repair Description	Labor Op Code	Op Time	Replacement P/N	Qty.
V	39100 2M051	0	(SA548) Engine Oil Service Light Logic Improvement	230M01RO	0.3 M/H	N/A	0

NOTICE

VIN inquiry data for this repair is provided for tracking purposes only. Kia retailers should reference SA548 when accessing the KDealer+ system.