

Clutch Pedal Squeak/Creak Noise

Service Category Drivetrain

Section Clutch

Market USA

Toyota Supports
 ASE Certification 

Applicability

YEAR(S)	MODEL(S)	ADDITIONAL INFORMATION
2005 - 2023	Tacoma	

REVISION NOTICE

August 16, 2023 Rev1:

- Applicability has been updated to include 2020 – 2023 model year Tacoma vehicles.
- Any previous printed versions of this bulletin should be discarded.

SUPERSESSON NOTICE

The information contained in this bulletin supersedes Service Bulletin No. T-SB-0186-12.

- Applicability has been updated to include 2018 and 2019 model year Tacoma vehicles.
- The entire bulletin has been updated.

Service Bulletin No. T-SB-0186-12 is obsolete and any printed versions should be discarded.

Introduction

Some 2005 – 2023 model year Tacoma vehicles equipped with a manual transmission may exhibit a squeak or creak noise from the clutch pedal when it is depressed or released. Follow the Repair Procedure in this bulletin to address this condition.

Clutch Pedal Squeak/Creak Noise

Warranty Information

OP CODE	DESCRIPTION	TIME	OFFP	T1	T2
TC1400	R & R Clutch Pedal Sub-assembly, Clutch Master Cylinder Assembly, and Clutch Reservoir Hose	1.2	31311-#####*	91	14

*Warranty claim MUST be submitted with the correct 10-digit OFFP. Choose the correct OFFP for the vehicle being repaired by searching for the parts in the Electronic Parts Catalog using the VIN filter.

APPLICABLE WARRANTY

- This repair is covered under the Toyota Basic Warranty. This warranty is in effect for 36 months or 36,000 miles, whichever occurs first, from the vehicle's in-service date.
- Warranty application is limited to occurrence of the specified condition described in this bulletin.

Parts Information

PART NUMBER		PART NAME	QTY
PREVIOUS	NEW		
31420-04010 31420-04011 31420-04020 31420-60031 31420-60032	31420-60033	Clutch Master Cylinder Assembly	1
31311-04010 31311-04011 31311-04012 31311-04020	31311-04021	Clutch Pedal Sub-assembly	1
31434-04010	31434-60010	Clutch Reservoir Hose	1
90389-06055		Clutch Pedal Sub-assembly Bushing	1
55105-04020		Clutch Pedal Bracket	As Needed

NOTICE

Previous part numbers are NOT compatible with the NEW clutch pedal assembly. Ensure ALL NEW part numbers are utilized when performing the repair in this bulletin.

Clutch Pedal Squeak/Creak Noise

Required Tools & Equipment

SPECIAL SERVICE TOOLS (SST)	PART NUMBER	QTY
Union Nut Wrench 10 mm	09023-00101	1

NOTE

Additional SSTs may be ordered by calling 1-800-933-8335.

REQUIRED TOOLS & MATERIAL	PART NUMBER	QTY
Body Grease W	08887-02007	1
MP (Multi-Purpose) Grease	–	As Needed
Brake Fluid: SAE J1703 or FMVSS No. 116 DOT 3	–	As Needed

Repair Procedure

1. Confirm the condition.

Is there a squeak or creak noise from the clutch pedal when it is depressed or released?

- **YES** — Continue to step 2.
- **NO** — This bulletin does NOT apply. Continue diagnosis using the applicable Repair Manual.

NOTE

Make sure the noise is coming from the clutch pedal and NOT from other components related to the clutch system.

Clutch Pedal Squeak/Creak Noise

Repair Procedure (continued)

- Replace the clutch pedal sub-assembly, clutch master cylinder assembly, and the clutch master cylinder hose.

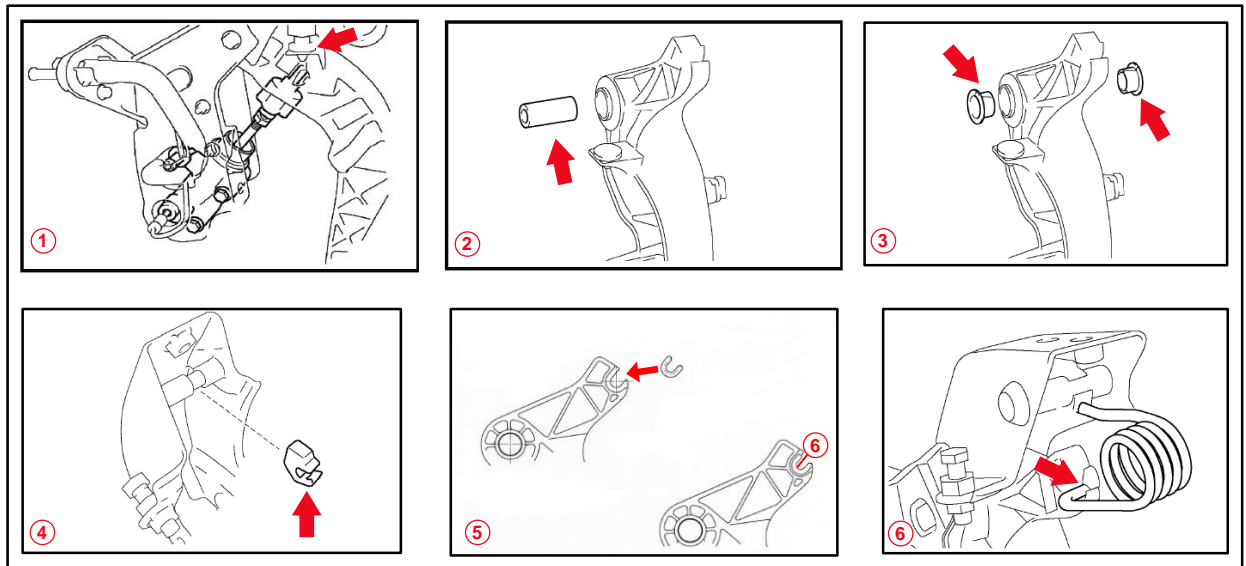
NOTE

- Apply body grease W where the clutch master cylinder clevis and clutch pedal meet (see callout 1).
- Apply MP grease to the shaft collar and turnover spring contact surfaces as shown in the Repair Manual (see callouts 2 – 6).

Refer to TIS, applicable model and model year Repair Manual:

- [2005](#) Tacoma:
Drivetrain – Clutch – “Clutch Pedal Sub-Assy: Replacement”
- [2006](#) / [2007](#) / [2008](#) / [2009](#) / [2010](#) / [2011](#) / [2012](#) / [2013](#) / [2014](#) / [2015](#) / [2016 – 2023](#) Tacoma:
Drivetrain – Clutch – “Clutch: Clutch Pedal: Removal”
- [2006](#) / [2007](#) / [2008](#) / [2009](#) / [2010](#) / [2011](#) / [2012](#) / [2013](#) / [2014](#) / [2015](#) / [2016 – 2023](#) Tacoma:
Drivetrain – Clutch – “Clutch: Clutch Pedal: Installation”

Figure 1.



1	Apply Body Grease W Where the Clutch Master Cylinder and Clutch Pedal Meet
2	Apply MP Grease to Clutch Pedal Shaft Collar
3	Apply MP Grease to the Two Bushings
4	Apply MP Grease to Clutch Pedal Spring Holder and Clutch Pedal Support

5	Install Bushing on Clutch Pedal Sub-assembly Compression Spring Insert
6	Apply MP Grease to Clutch Pedal Sub-assembly and Compression Spring

Clutch Pedal Squeak/Creak Noise

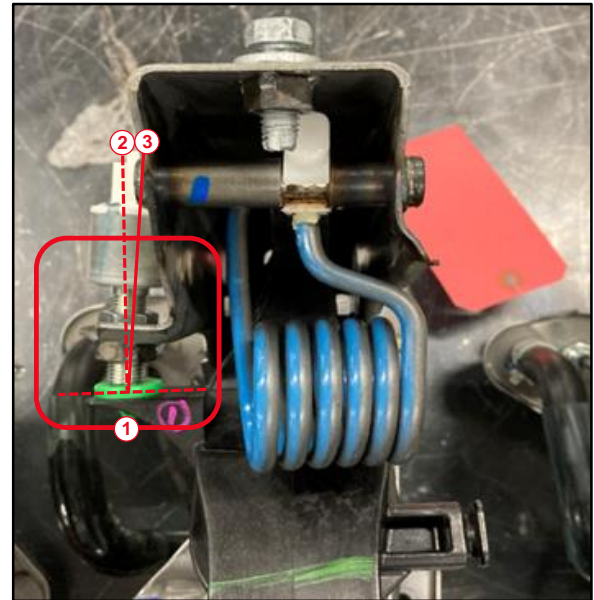
Repair Procedure (continued)

3. Inspect the clutch pedal bracket assembly for ANY deformations. Replace the clutch pedal bracket if necessary.

4. Adjust the pedal height, free play, and release point. Refer to TIS, applicable model and model year Repair Manual.
 - [2005](#) / [2006](#) / [2007](#) / [2008](#) / [2009](#) / [2010](#) / [2011](#) / [2012](#) / [2013](#) / [2014](#) / [2015](#)
 Tacoma:
Drivetrain – Clutch – “Clutch: Clutch Pedal: On-Vehicle Inspection”
 - [2016 – 2023](#) Tacoma:
 “Clutch: Clutch Pedal: Adjustment”

NOTICE
 Ensure proper adjustment of the clutch pedal; if NOT done correctly, then the noise could occur even with new parts.

Figure 2. Deformed Clutch Pedal Bracket Assembly



1	Deformation Area
2	Normal Position
3	Position After Deformation

5. Test-drive the vehicle to confirm the condition no longer exists.