

MAS003732 RU 23-49

RAPID UPDATE

FROM: Maserati TSO

TO: Maserati Network



Maserati

PERSONAL SERVICE LAB

MASTERS OF CARE

Rapid Update 654

Granturismo – Door-fender gap & flush check

TECHNICAL SERVICE OPERATIONS



DATE: SEPTEMBER 21 2023

Certain Maserati GranTurismo (189) MY24 are involved in a Rapid Update to carry out a door fitment inspection procedure due to an interference with the fender.

This action is necessary because, on a limited number of vehicles, the gap and flush between the door and the fender could be incorrect.

The procedure consists in checking the relative position between the door and the mudguard area (fender) and possibly adjusting the profiles of the door, mudguard (fender) and front hood.

We remind you that all the Rapid Updates must be performed within the first workshop visit, regardless of the Mandatory setting set in Modis, as required by Maserati policies.

Also, for vehicles in Stock Dealer / PDI, it is necessary to carry out all action operations before delivery to the end customer, as required by the White Book and explicitly reported in the Pre-delivery checklist

Please read and review this bulletin first before starting the procedure.

Contact your Regional AfterSales Manager (RAM) or the Technical Support Helpdesk if you have any questions. (Maseratitechsupport@maserati.com)

Thank You for your continued support and cooperation.

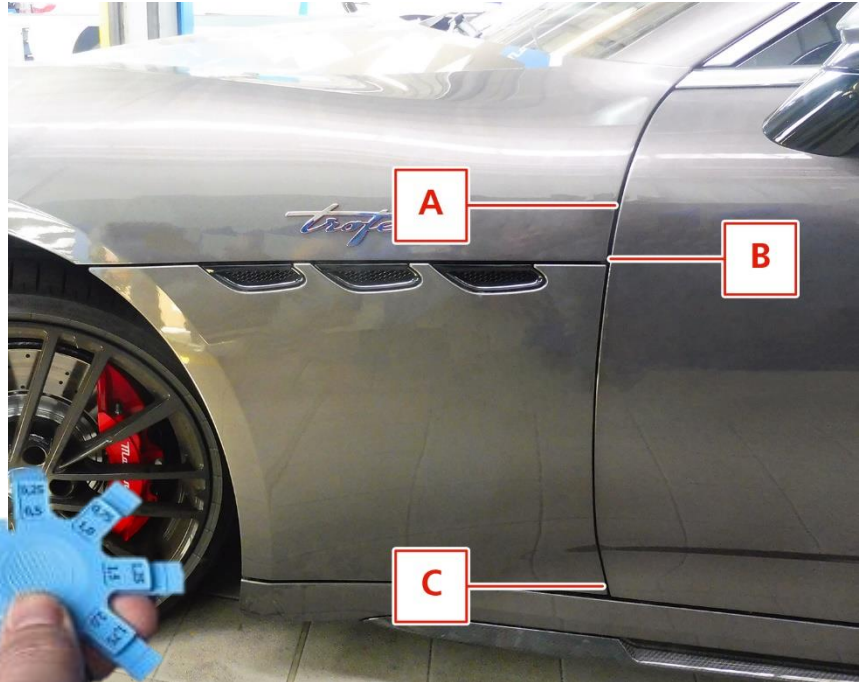
Maserati Americas
Aftersales Dept.

Overview

 All images shown in this bulletin are for illustrative purposes only

ATTENTION! Take extra care not to damage the exterior paint of the vehicle.

Measuring points
Following instruction on page 3



Use a suitable gauge, check the relative positions of the hood, fender, and door.

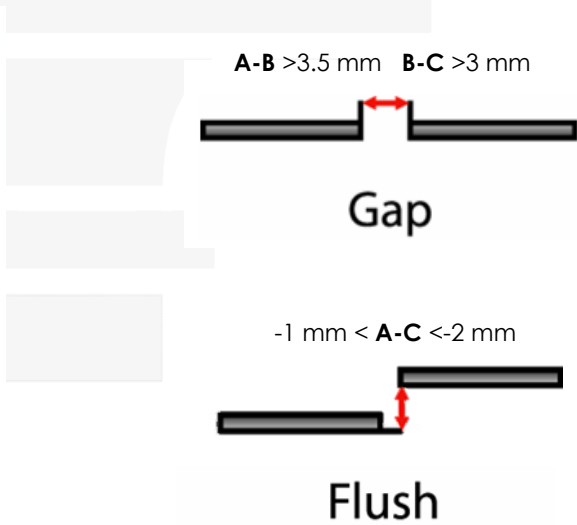
Technical Procedure

1. Always check ModisCS+ to see if the vehicle is involved in this action and if it has not been previously performed.

Door-Fender Flush&Gap Inspection

ATTENTION! To be checked on both sides of the vehicle!

Note: If damage to the paintwork is found due to interference between the moving elements in contact, please open a BOL as "Support Request" and await further instructions.



GAP means the span between the two profiles in the longitudinal direction, while the **FLUSH** is the distance between the profiles in the transverse direction.

Always consider the **fender** as a **reference**, check:

o from point **A** to point **B**:

- The **GAP** (distance in the longitudinal direction) must be > 3.5 mm
- The **FLUSH** (distance in transverse direction) must be between -1 mm and -2 mm

o from point **B** to point **C**:

- The **GAP** must be > 3 mm
- The **FLUSH** must be between -1 mm and -2 mm

2. If the measurements are correct, the car is **OK** and no further adjustments need to be made.
3. If one or more measurements do not fall within the range described, continue with the adjustment based on the following parameters.
4. If the **GAP** between **A and B** is more than 3.5 mm, proceed with the **adjustment of the front hood** on the X-axis.
5. If the **FLUSH** between **A and B** is **not** between -1mm and -2mm, proceed with the Y-axis **fender adjustment**.
6. If the **GAP** between **B and C** is more than 3 mm, proceed with the adjustment **of the fender** on the X-axis.
7. If the **FLUSH** between **B and C** is **not between -1 mm and -2 mm**, proceed with Y-axis **fender** adjustment. Follow the correct procedure reported in the bulletin.

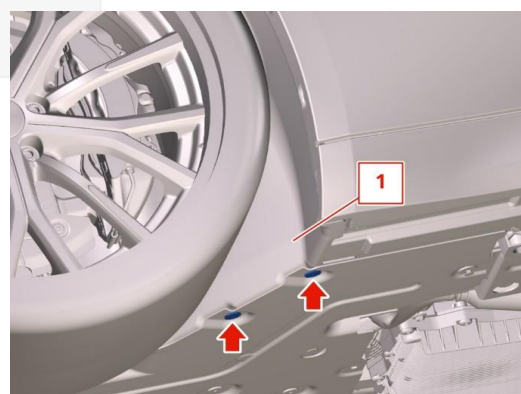
8. Check both sides of the vehicle.

Fender adjustment

1. Remove the side cover of the engine compartment to reveal the 3 upper screws of the front fender, following the relative procedure included in the workshop manual:
 - **09.15.185 00 – ENGINE COMPARTMENT SIDE COVER RH**
 - **09.15.186 00 – ENGINE COMPARTMENT SIDE COVER LH**
2. Remove all the screws indicated below to undo the rear wheel arch protection (fender liner).



NOTE: It is not necessary to lift the vehicle to access the screws underneath the vehicle.

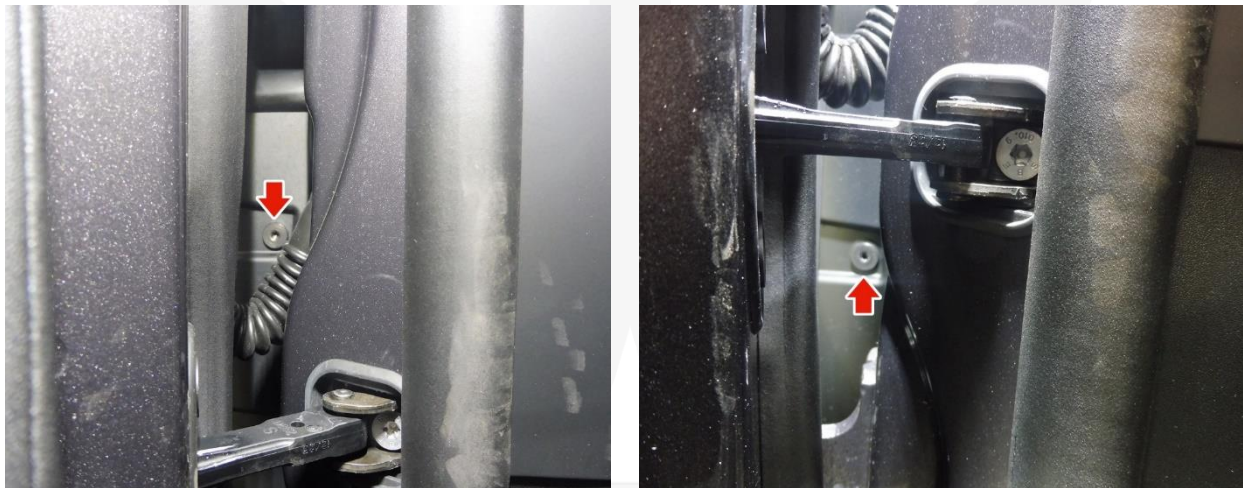


3. Move the fender liner away as shown to reach the rear of the fender. At the rear of the front



fender (1), using a short Phillips screwdriver (stubby), loosen the screw indicated.

4. Open the door slightly and loosen both the upper and lower screws in the side area of the front fender.



5. When opening the front hood, loosen the indicated screws of the front fender. The front fender is now free to move. Adjust its position according to the preliminary check, by moving it in the X-direction (from right to left, longitudinally to the vehicle) or in the Y-direction (pushing or pulling, transversely to the vehicle) until the correct positioning is achieved.



6. Tighten all loose screws and reassemble all removed parts in reverse order per the workshop manual.

7. Procedure complete.

Front hood adjustment

1. To proceed with the adjustment of the front hood, it is necessary that it is completely closed and, to have the necessary freedom of movement, released from the two-front **hood (aka Bonnet)** closing blocks.
2. To do this, remove the two locking hooks in the front part of the cover following the procedure given in the workshop manual.
 - **09.23.049 00 – ENGINE BONNET LOCK HOOK RH**
 - **09.23.050 00 – LH ENGINE BONNET LOCK HOOK**
3. Loosen the indicated nuts that secure the cover to the right hinge. Repeat the same operation for the left hinge fasteners.



4. Fully close the front hood, which is now free to move.
5. Adjust its position according to the preliminary check, moving it in the X direction (longitudinally to the vehicle) until the correct positioning is achieved.



6. Once the adjustment has been made, carefully open the cover and tighten the 4 (four) hinge nuts to secure the front hood.
7. Reassemble all the removed parts and in reverse order per the workshop manual.
8. Check that the door adjustment is now correct.
9. Procedure complete.

Warranty Claim

Fill in the relative Warranty Claims as follows:

Description	Code
Rapid Update Number	654
Warranty code	23
Error code	063
Component Code	9.20.001
Operation Code <ul style="list-style-type: none"> ▪ Check (2 sides) ▪ Flash&Gap tuning (1 side) ▪ Flash&Gap tuning (2 sides) 	9.20.001.A (0.10 h) 9.20.001.B (0.30 h) 9.20.001.C (0.50 h)